

ASPIRE

OUTDOOR PRODUCTS

Outdoor wall pack light



The ASPIRE Series is a high quality, durable, and elegant wall pack LED fixture. Its robust structure allows it to be rated for both wet and dusty locations and is fully functional in a large temperature range. The ASPIRE comes in a variety of power and CCT options, while providing a luminous efficacy of 130 LPW.

eralux®



DATE	
PROJECT NAME	
TYPE	
QTY	
ORDERING CODE	AE-WP-AP - -H - - - -

OPERATING & ELECTRICAL

INPUT VOLTAGE	120-277V, 277-480V
POWER FACTOR	0.9
DIMMING	0-10V external dimming down to 10%
TOTAL HARMONIC DISTORTION (THD)	<20%

PERFORMANCE

LUMENS PER WATT	130 LPW at 80CRI
POWER	40, 60, 90, 120W
BEAM ANGLE	90° x 100°

MECHANICAL & HOUSING

HOUSING	Aluminum die cast housing for superior heat dissipation, strength, and rigidity.
LENS	UV resistant, polycarbonate lens ensures high efficiency light output for a clean, evenly illuminated surface with minimal glare. High transmittance lens allowing for a smooth, diffused light pattern.
FINISH	Powder coat finish for the toughest outdoor conditions. Available in black and bronze color options.
POWER SUPPLY	Factory wired electronic LED driver
LED BOARD	Light emitted source

APPLICATION CONDITION

AMBIENT TEMPERATURE RANGE	-40 °C to 40°C
PROTECTION	Wet location, dustproof fixture
DISTRIBUTION	T4
BUG RATING	B2-U2-G1

COMPATIBLE MOUNTING

MOUNTING	Surface, wall mounted
----------	-----------------------

WARRANTY

SYSTEM WARRANTY – 5 YEARS

Eralux will warrant defective drivers, LEDs and boards for 5 years from the date of purchase. This warranty is valid only if the fixture is installed and used as per installation guides and specifications. If a defect is present, Eralux will send drivers and boards at no fee with a thorough replacement instructions along with instructions on the return of the defective parts back to Eralux.

LUMEN MAINTENANCE – L70 at 50,000 hours

Rated for 70% initial lumen output at 50,000 hours of operation, operated at 25°C ambient temperature; per guidelines published by the Illuminating Engineering Society (IES)

eralux® ASPIRE

OUTDOOR PRODUCTS

Outdoor wall pack light

DATE						
PROJECT NAME						
TYPE						
QTY						
ORDERING CODE	AE-WP-AP	-	-H	-	-	-

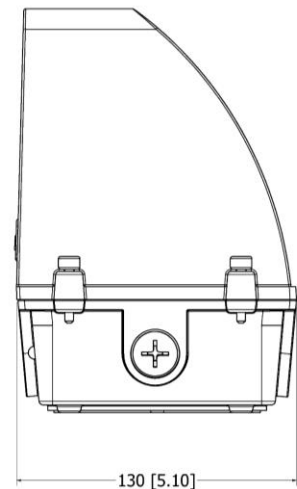
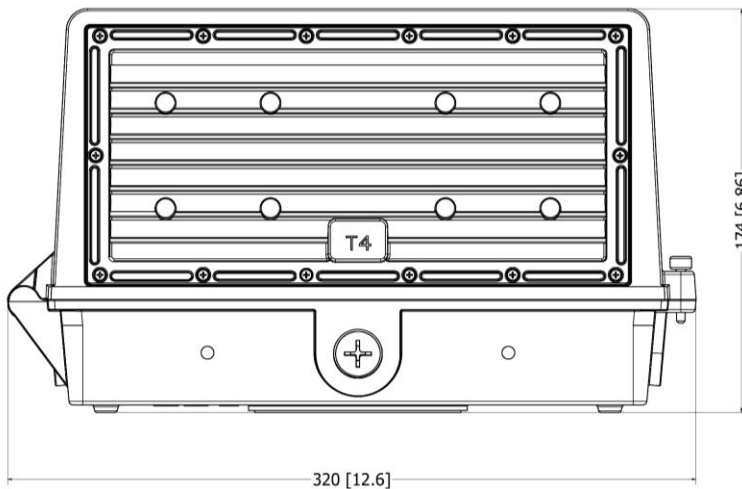
ORDERING GUIDE

EXAMPLE: AE-WP-AP-28W-H-40K-BZ

FIXTURE FAMILY	POWER	PERFORMANCE	INPUT VOLTAGE	CCT	CONTROLS	FINISH
AE-WP-AP	-	-H	-	-	-	-
AE-WP-AP ERALUX Aspire Series outdoor wall pack light fixture	-28W 28 Watts: 3,640 lumens	-H Premium light diffusion	[BLANK] 120-277Vac input voltage range	-30K 3000K CCT	-PC Photocell daylight sensor (Not available for HV option)	-BZ Bronze powder coat finish
	-40W 40 Watts: 5,200 lumens			-35K 3500K CCT		
	-60W 60 Watts: 7,800 lumens		-HV 277-480Vac input voltage range	-40K 4000K CCT	-MS Motion Sensor	-BK Black Powder coat finish
	-80W 80 Watts: 10,400 lumens			-50K 5000K CCT		

PRODUCT DIMENSIONS

AE-WP-AP



DATE					
PROJECT NAME					
TYPE					
QTY					
ORDERING CODE	AE-WP-AP	-	-H	-	-

LUMEN ESTIMATE

Lumen output varies based on CCT and CRI. An estimate of lumen output of the various CCT/CRI combinations, use correction factors as per table below:

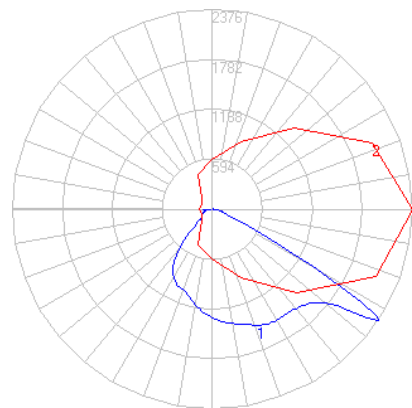
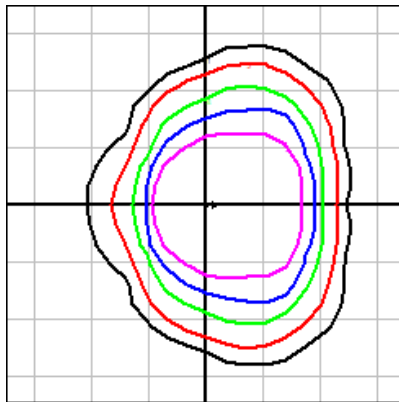
LUMEN ESTIMATE ADJUSTMENT FACTORS				
CCT	2700K	3000K	3500K	4000K
NORMAL (80CRI)	.91	.94	.97	1

PHOTOMETRIC DATA

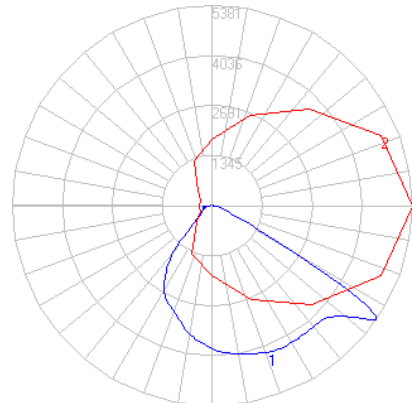
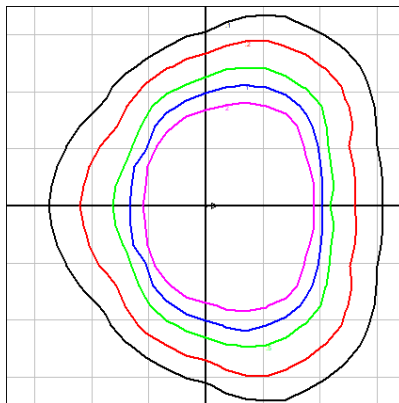
GRID DISTANCES WITH A MOUNTING HEIGHT OF 10' AFG

POLAR LUMINOUS INTENSITY GRAPHS

AE-WP-AP-28W-H-XX-50XX



AE-WP-AP-80W-H-XX-50XX



eralux®
ASPIRE

OUTDOOR PRODUCTS
Outdoor wall pack light

DATE	
PROJECT NAME	
TYPE	
QTY	
ORDERING CODE	AE-WP-AP - -H - - - -

OVERVIEW



PREMIUM MATERIALS

Constructed from aluminum die-cast for superior heat dissipation and thermal management while maintaining excellent fixture strength and rigidity.

TEMPERATURE

Fixture suitable for temperature ranges from -40 to +40 degrees Celsius.

INTELLIGENT DESIGN

Side and rear knockouts for different mounting types and accessories such as photocell and additional sensors.

