

# ATHENA

## OUTDOOR PRODUCTS

### Outdoor Stadium Light

ATHENA super modular outdoor stadium sports light available from 200W to 1200W, with 2 CCT options and 5 beam angle options could fulfill any of your project needs. The compact modular design allows quick and flexible assembly and installation. You can easily adjust the light angle to create diversity of lighting environment. Athena is ERALUX's latest high-power outdoor lighting which can be applied to the sports field, stadium venue, plazas, docking space, etc.



eralux®



DATE	
PROJECT NAME	
TYPE	
QTY	
ORDERING CODE	AE-SP-AH- - -7 - -010-SV

### OPERATING & ELECTRICAL

INPUT VOLTAGE	120-277V, 277-480V
POWER FACTOR	>0.92
DIMMING	0-10V dimming
TOTAL HARMONIC DISTORTION (THD)	<20%

### PERFORMANCE

LUMENS PER WATT	140 LPW for 30°, 45°, 60° at 70CRI 125 LPW for 10°, 15° at 70CRI
POWER CONSUMPTION	200W, 400W, 600W, 800W, 1200W
BEAM ANGLE	10°, 15°, 30°, 45°, 60°

### MECHANICAL & HOUSING

HOUSING	Aluminum die-cast for excellent thermal management and dissipation essential for long lasting, rigid structure and LED driver.
LENS	Tempered glass and polycarbonate optical lens ensures high efficiency light output for a clean, evenly illuminated surface with minimal glare. High transmittance lens allowing for a smooth, diffused light pattern.
FINISH	Powder coating silver finish for strong anti-corrosion
ACCESSORIES	Visor, Safety rope, Mounting adaptor
POWER SUPPLY	Factory wired electronic LED driver
LED BOARD	LED Array

### APPLICATION CONDITION

AMBIENT TEMPERATURE RANGE	-30 to 40°C
PROTECTION	IK08 IP66 rated 10KV Surge Protection

### COMPATIBLE MOUNTING

MOUNTING	Bracket mount Pole mount with mounting adaptor
----------	---

### WARRANTY

#### SYSTEM WARRANTY – 5 YEARS

Eralux will warrant defective drivers, LEDs and boards for 5 years from the date of purchase. This warranty is valid only if the fixture is installed and used as per installation guides and specifications. If a defect is present, Eralux will send drivers and boards at no fee with a thorough replacement instructions along with instructions on the return of the defective parts back to Eralux.

#### LUMEN MAINTENANCE – L90 at 53,000 hours

Rated for 90% initial lumen output at 53,000 hours of operation, operated at 25°C ambient temperature; per guidelines published by the Illuminating Engineering Society (IES). (L70 at 50,000 hours)

DATE	
PROJECT NAME	
TYPE	
QTY	
ORDERING CODE	AE-SP-AH- - -7 -010-SV

## ORDERING GUIDE

EXAMPLE: : AE-SP-AH-200-30-740-010-SV

FIXTURE FAMILY	POWER	BEAM ANGLE	CCT	INPUT VOLTAGE	CONTORL	COLOR FINISH
AE-SP-AH-	-		-7		-010	-SV
AE-SP-AH- ERALUX Athena Stadium Sports Light	200- 200 watts; 25,000 / 28,000 lumens	10 10° beam angle; 125 LPW	-740 70 CRI 4000K	-[BLANK] 100-277 Vac 50 / 60 Hz	-010 0-10V dimmable	-SV Silver finish
	400- 400 watts; 50,000 / 56,000 lumens	15 15° beam angle; 125 LPW				
	600- 600 watts; 75,000 / 84,000 lumens	30 30° beam angle; 140 LPW				
	800- 800 watts; 100,000 / 112,000 lumens	45 45° beam angle; 140 LPW	-750 70 CRI 5000K	-HV 277-480 Vac 50 / 60 Hz		
	1200- 1200 watts; 150,000 / 168,000 lumens	60 60° beam angle; 140 LPW				

## ACCESSORIES

FIXTURE FAMILY	MOUNTING METHOD
AE-OD-SP-AH	-
AE-OD-SP-AH	<b>-VS</b> Visor SPCC materials for single LED module
	<b>-SR</b> Safety rope
	<b>-DB</b> Driver box for 800W and 1200W
	<b>-SF-SV</b> Slip fitter mounting bracket-Silver



AE-OD-SP-AH-VS

## EPA (Effective Projected Area)

POWER	FIXTURE BODY EPA(FT²)	DRIVER BOX EPA(FT²)
<b>200W</b>	0.60	N/A
<b>400W</b>	1.34	N/A
<b>600W</b>	1.96	N/A
<b>800W</b>	2.74	2.09
<b>1200W</b>	3.87	2.09

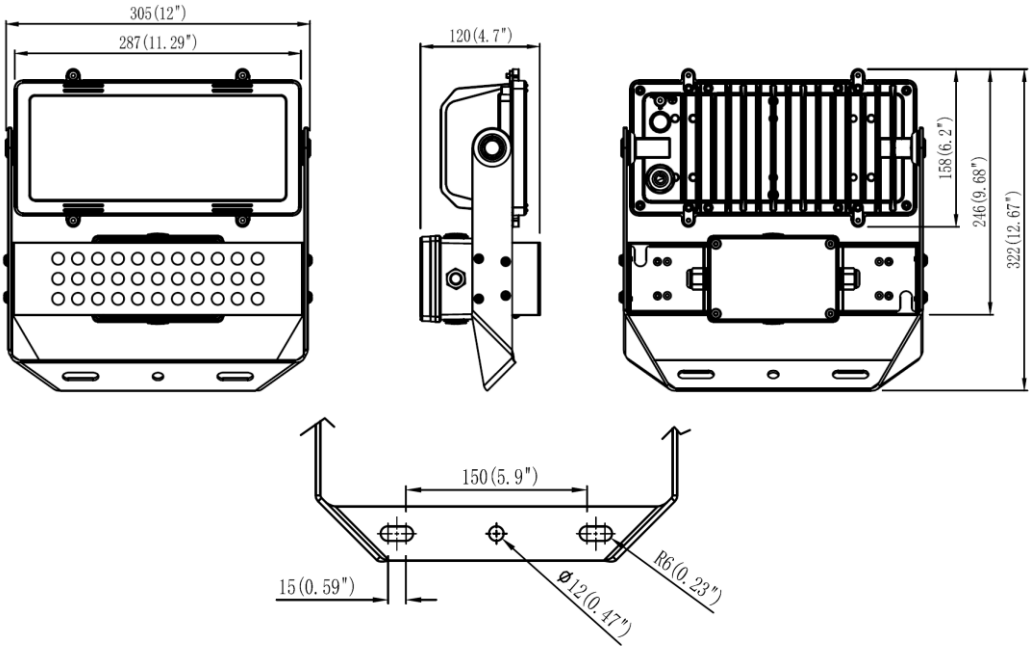
ATHENA

OUTDOOR PRODUCTS  
Outdoor Stadium Light

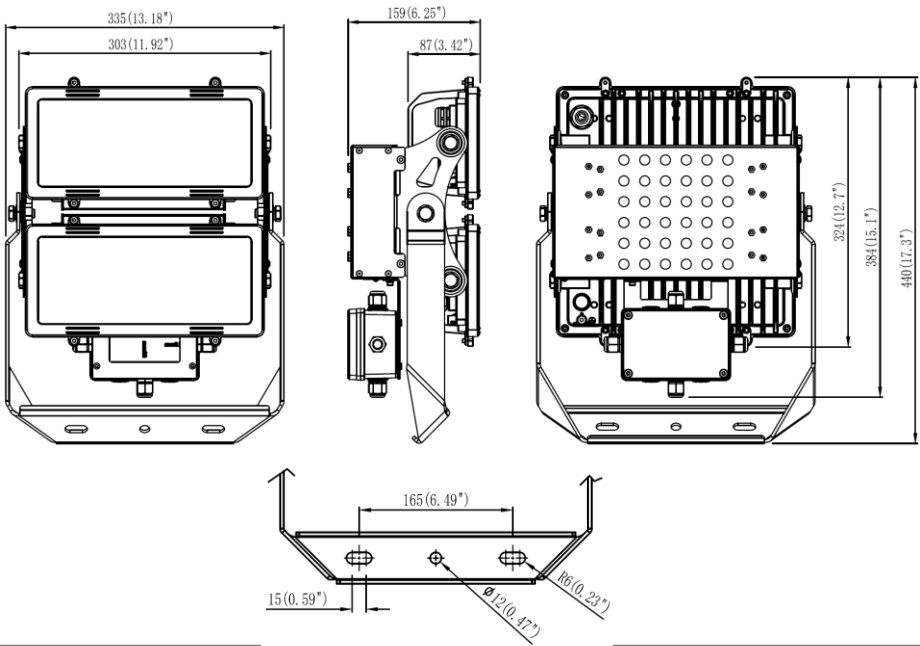
DATE						
PROJECT NAME						
TYPE						
QTY						
ORDERING CODE	AE-SP-AH-	-	-7			-010-SV

PRODUCT DIMENSIONS

AE-SP-AH-200W



AE-SP-AH-400W



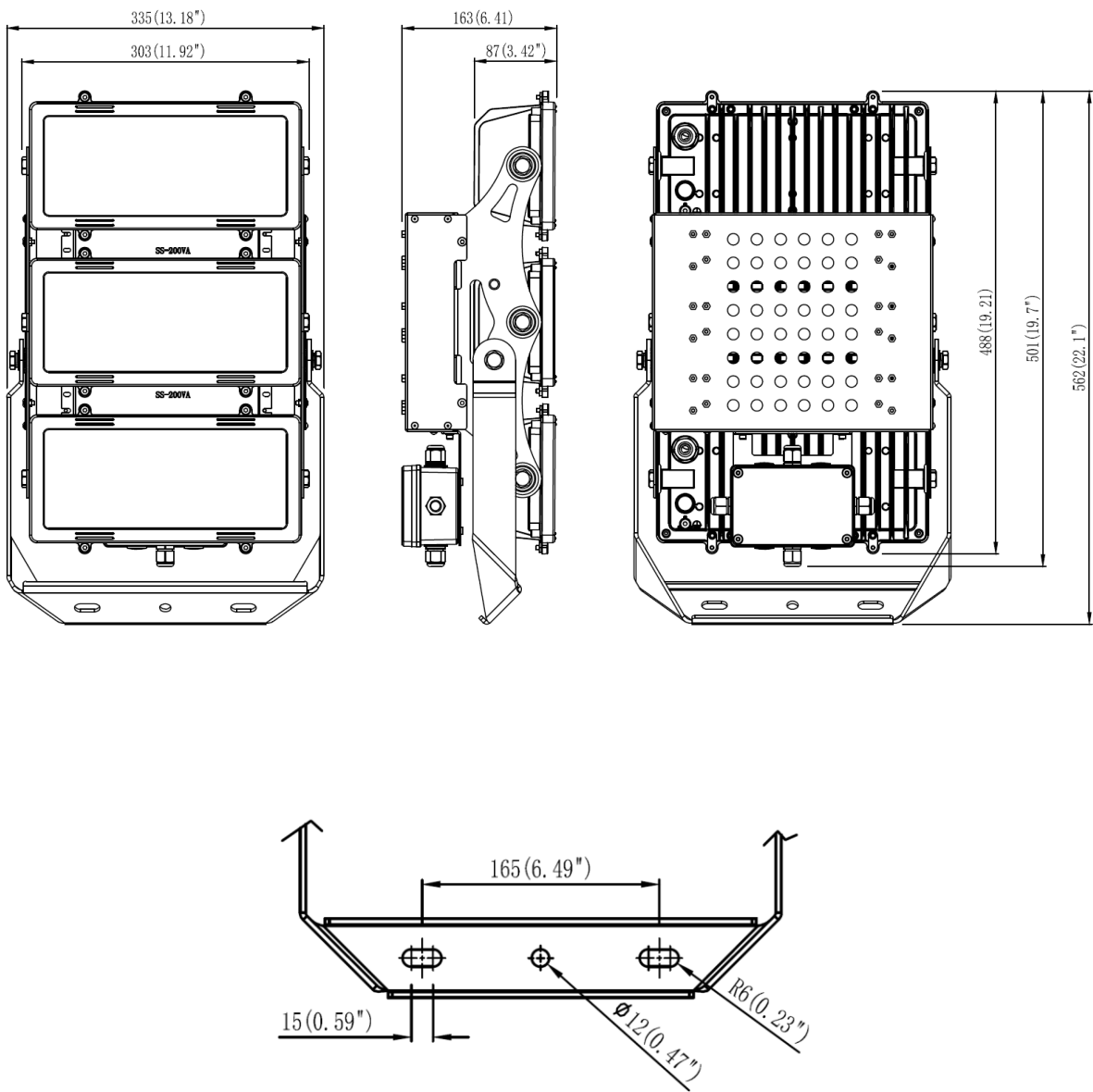
ATHENA

OUTDOOR PRODUCTS  
Outdoor Stadium Light

DATE						
PROJECT NAME						
TYPE						
QTY						
ORDERING CODE	AE-SP-AH-	-	-7			-010-SV

PRODUCT DIMENSIONS

AE-SP-AH-600W



ATHENA

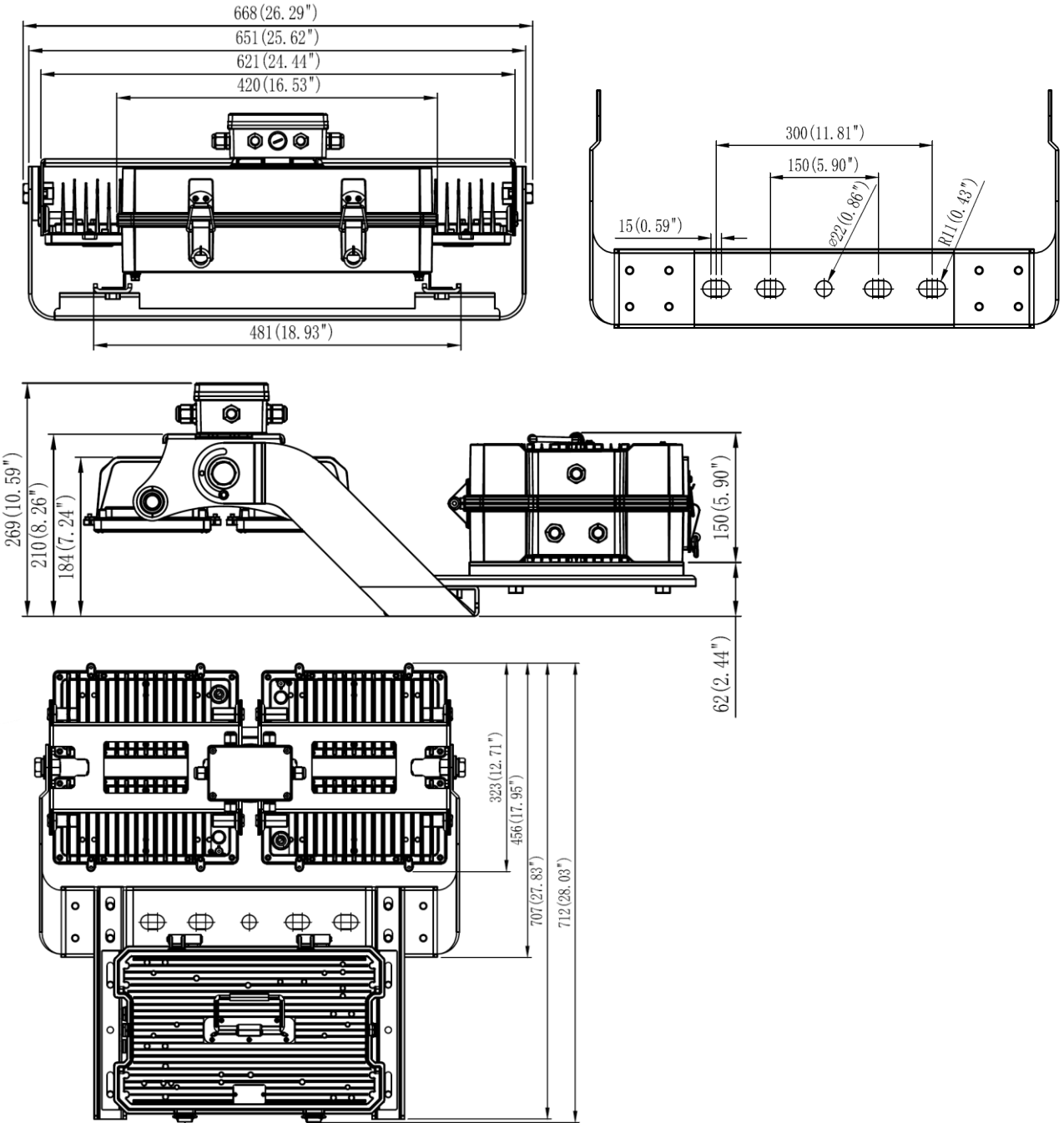
OUTDOOR PRODUCTS

Outdoor Stadium Light

DATE						
PROJECT NAME						
TYPE						
QTY						
ORDERING CODE	AE-SP-AH-	-	-7			-010-SV

PRODUCT DIMENSIONS

AE-SP-AH-800W



# ATHENA

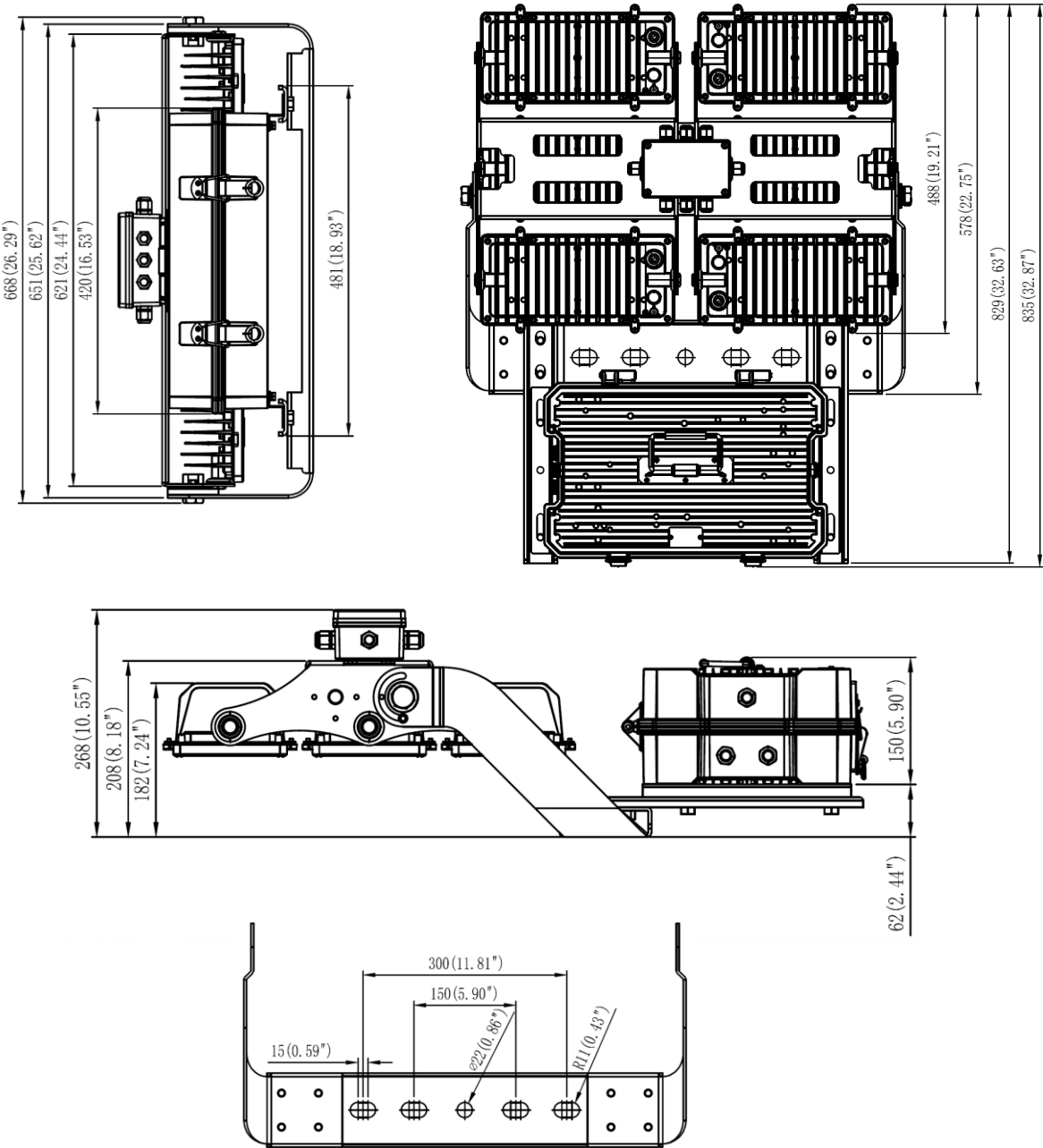
OUTDOOR PRODUCTS

Outdoor Stadium Light

DATE						
PROJECT NAME						
TYPE						
QTY						
ORDERING CODE	AE-SP-AH-	-	-7			-010-SV

## PRODUCT DIMENSIONS

AE-SP-AH-1200W



## LUMEN ESTIMATE

Lumen output varies based on CCT and CRI. An estimate of lumen output of the various CCT/CRI combinations, use correction factors as per table below:

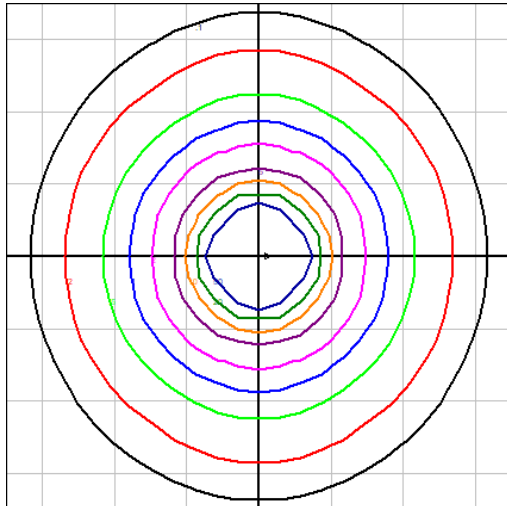
### LUMEN ESTIMATE ADJUSTMENT FACTORS

CCT	4000K	5000K
70 CRI	0.97	1.00

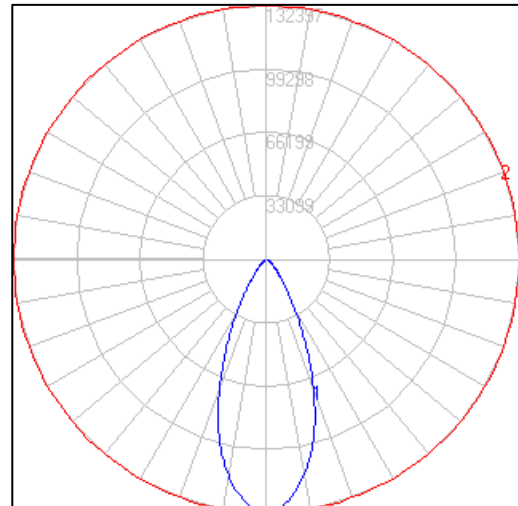
## PHOTOMETRIC DATA

AE-SP-AH-600-45-750-010-SV

### GRID DISTANCES WITH A MOUNTING HEIGHT OF 10' AFG



### POLAR LUMINOUS INTENSITY GRAPHS



DATE	
PROJECT NAME	
TYPE	
QTY	
ORDERING CODE	AE-SP-AH- - -7 -010-SV

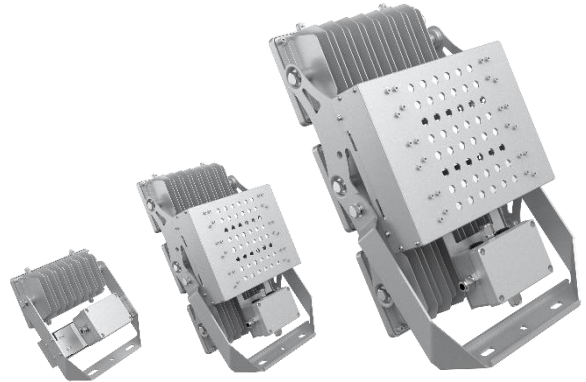
## OVERVIEW



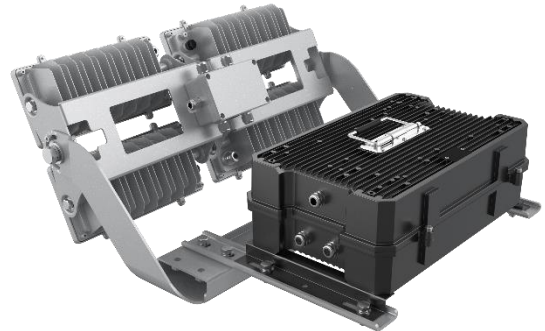
200W

400W

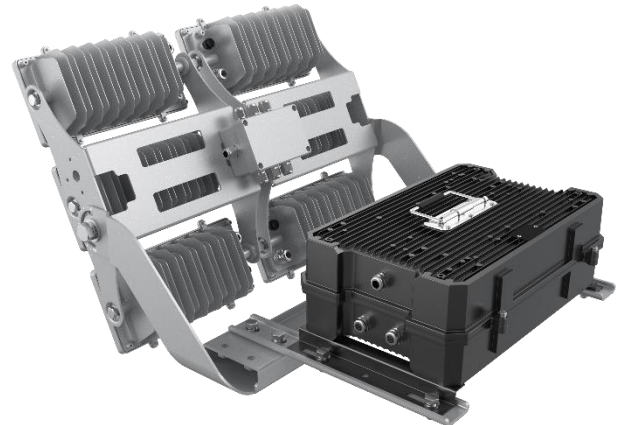
600W



800W

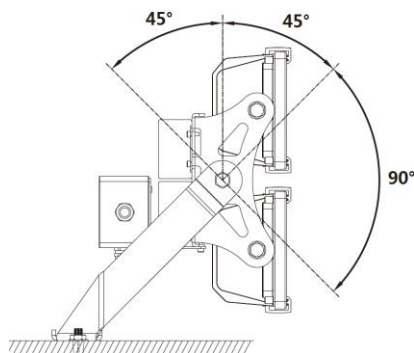


1200W





## OVERVIEW



200W

400W

600W

With Visor Accessories



### EXTRAORDINARY AMING FLEXIBILITY

Each module can be rotated separately, with 180°adjustable mounting bracket, you could achieve any lighting distribution results.

### HUMAN-CENTERED DESIGN

The rotatable bracket allows easy installation that could save you some valuable time and human resources. Light-weight fixture (4.1KG for 200W and 15.3KG for 600W) makes the installation easier.

### LIGHT POLLUTION CONTROL

Optional visor provides lighting pollution control.

### HIGH POWER AND NARROW BEAM ANGLE

Narrow beam angle of 10°or 15°offers a perfect lighting solution in places like large Plazas, outdoor and indoor stadium, where mounting height is 20m or more.

### HIGH-EFFICACY

Performance up to 140 lumens per watt gives great energy savings for your project space.