

# DONATELLO

## OUTDOOR PRODUCTS BOLLARD

The DONATELLO bollard is an elegant solution for your outdoor area lighting needs. Its robust and strong materials allow it to withstand the harshest of elements without a scratch. The Donatello features an innovative optical system providing illumination to your space while keeping the beam shielded from the eye



eralux®



|               |                     |
|---------------|---------------------|
| DATE          |                     |
| PROJECT NAME  |                     |
| TYPE          |                     |
| QTY           |                     |
| ORDERING CODE | AE-OD-DN2 - - -80 - |

### OPERATING & ELECTRICAL

|                                 |                            |
|---------------------------------|----------------------------|
| INPUT VOLTAGE                   | 120-240 Vac<br>120-277 Vac |
| POWER FACTOR                    | 0.9                        |
| DIMMING                         | No dimming                 |
| TOTAL HARMONIC DISTORTION (THD) | <20%                       |

### PERFORMANCE

|            |      |
|------------|------|
| BEAM ANGLE | 120° |
|------------|------|

### MECHANICAL & HOUSING

|         |   |
|---------|---|
| SIZE    | 42'' height   |
| HOUSING | Corrosion-resistant aluminum-cast housing and plate for mounting.<br>Concrete anchor for mounting.  |
| LENS    | 360° optical polymer  |
| FINISH  | Thermoset powder coat finish that provides superior resistance to corrosion and weathering.<br>Minimum 3mm thickness for a finish that provides anti-cracking and peeling from weather further enhanced with a marine grade corrosion resistant finish. |

### APPLICATION CONDITION

|                           |                                  |
|---------------------------|----------------------------------|
| AMBIENT TEMPERATURE RANGE | -25 °C to 50°C                   |
| PROTECTION                | IP65, thermally-insulated driver |

### COMPATIBLE MOUNTING

|          |  |
|----------|--|
| MOUNTING | Concrete anchor mounted on aluminum-cast plate |
|----------|--|

### WARRANTY

#### SYSTEM WARRANTY – 5 YEARS

Eralux will warrant defective drivers, LEDs and boards for 5 years from the date of purchase. This warranty is valid only if the fixture is installed and used as per installation guides and specifications. If a defect is present, Eralux will send drivers and boards at no fee with a thorough replacement instructions along with instructions on the return of the defective parts back to Eralux.

#### LUMEN MAINTENANCE – L70 at 50,000 hours

Rated for 70% initial lumen output at 50,000 hours of operation, operated at 25°C ambient temperature; per guidelines published by the Illuminating Engineering Society (IES)

|               |           |   |   |     |   |
|---------------|-----------|---|---|-----|---|
| DATE          |           |   |   |     |   |
| PROJECT NAME  |           |   |   |     |   |
| TYPE          |           |   |   |     |   |
| QTY           |           |   |   |     |   |
| ORDERING CODE | AE-OD-DN2 | - | - | -80 | - |

## ORDERING GUIDE

EXAMPLE: AE-OD-DN25-C10-32-6-3-80-B-M

| FIXTURE FAMILY  | POWER & SIZE  | CCT                    | CRI                  | HOUSING & FINISH   |
|---|---|------------------------|----------------------|--|
| <b>AE-OD-DN</b>   | -   | -                      | <b>-80</b>           | -  |
| <b>AE-OD-DN25</b><br>(400 lumens)<br>Outdoor products<br>Donatello Bollard<br>Fixture | <b>-C10-32-6</b><br>120-240Vac<br>10 watts: 400 lumens<br>32" height; 6"<br>diameter  | <b>-3</b><br>3000K CCT | <b>-80</b><br>80 CRI | <b>-B-M</b><br>Thermoset powder coat graphite black<br>aluminum-cast housing with marine<br>corrosion resistant finish |
|   | <b>-C20-42-8</b><br>120-277Vac<br>20 watts: 1000 lumens<br>42" height; 8"<br>diameter | <b>-4</b><br>4000K CCT |                      | <b>-Z-M</b><br>Thermoset powder coat mineral bronze<br>aluminum-cast housing with marine<br>corrosion resistant finish |
|   | <b>-C35-42-8</b><br>120-277Vac<br>35 watts: 1750 lumens<br>42" height; 8"<br>diameter | <b>-5</b><br>5000K CCT |                      | <b>-W-M</b><br>ERALUX nebula white thermoset cast<br>housing with marine corrosion resistant<br>finish*                |
|   |   |                        |                      | <b>-S-M</b><br>Aluminum (RAL9006) thermoset cast<br>housing with marine corrosion resistant<br>finish*                 |

\*Contact for leadtimes and availability

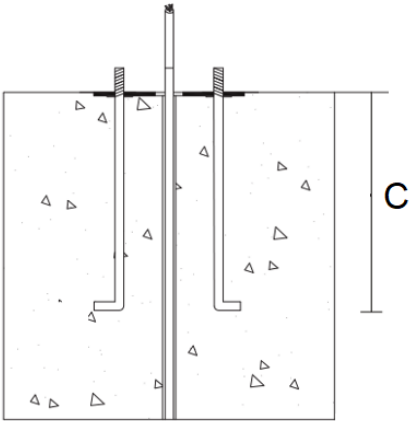
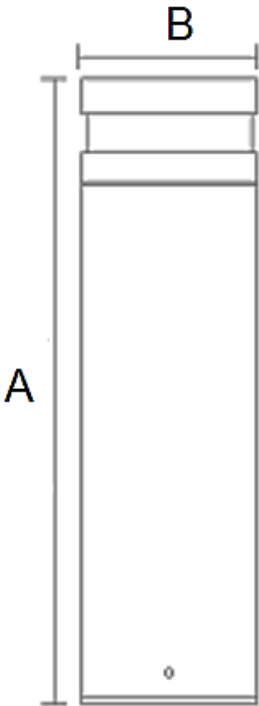
|               |           |   |   |       |
|---------------|-----------|---|---|-------|
| DATE          |           |   |   |       |
| PROJECT NAME  |           |   |   |       |
| TYPE          |           |   |   |       |
| QTY           |           |   |   |       |
| ORDERING CODE | AE-OD-DN2 | - | - | -80 - |

B-U-G RATING

| Power | BUG Rating |
|-------|------------|
| 10W   | B1-U1-G1   |
| 20W   | B1-U1-G1   |
| 32W   | B1-U1-G1   |

PRODUCT DIMENSIONS

AE-OD-DN25, AE-OD-DN26



| Product dimensions |            |             |             |
|--------------------|------------|-------------|-------------|
| Power              | A          | B           | C           |
| 10W                | 32" [813]  | 5.5" [140]  | 7.87" [200] |
| 20W                | 42" [1067] | 7.87" [200] | 7.87" [200] |
| 32W                | 42" [1067] | 7.87" [200] | 7.87" [200] |

# eralux® DONATELLO

OUTDOOR PRODUCTS  
BOLLARD

|               |                     |
|---------------|---------------------|
| DATE          |                     |
| PROJECT NAME  |                     |
| TYPE          |                     |
| QTY           |                     |
| ORDERING CODE | AE-OD-DN2 - - -80 - |

## LUMEN ESTIMATE

Lumen output varies based on CCT and CRI. An estimate of lumen output of the various CCT/CRI combinations, use correction factors as per table below:

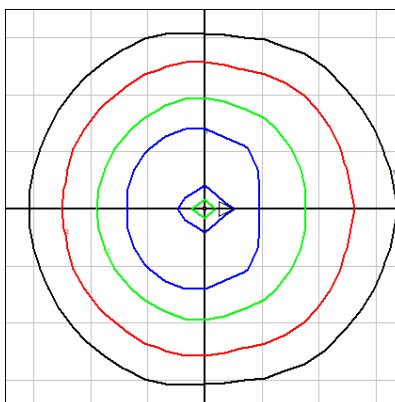
### LUMEN ESTIMATE ADJUSTMENT FACTORS

| CCT            | 2700K | 3000K | 3500K | 4000K |
|----------------|-------|-------|-------|-------|
| NORMAL (80CRI) | .91   | .94   | .97   | 1     |

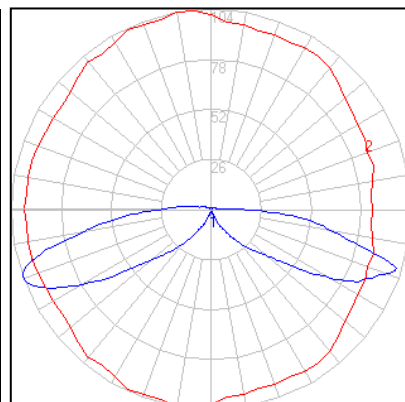
## PHOTOMETRIC DATA

AE-OD-DN25-C10-XX-6-3-80-X-M

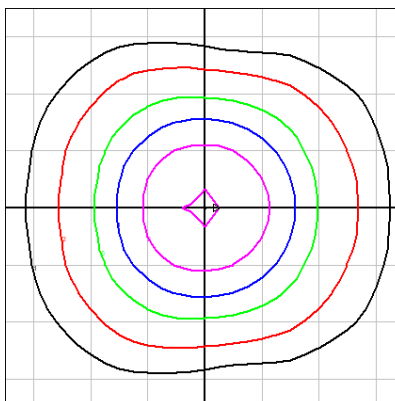
### GRID DISTANCES WITH A MOUNTING HEIGHT OF 32" AFG



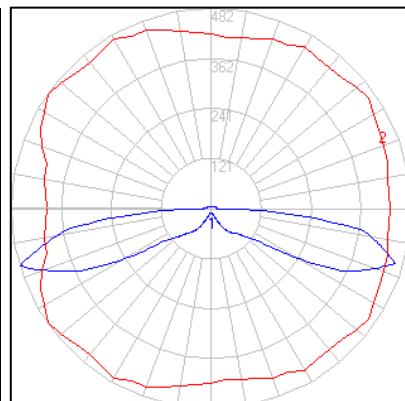
### POLAR LUMINOUS INTENSITY GRAPHS



### GRID DISTANCES WITH A MOUNTING HEIGHT OF 42" AFG



### POLAR LUMINOUS INTENSITY GRAPHS



AE-OD-DN26-C35-XX-8-3-80-X-M

# eralux® DONATELLO

OUTDOOR PRODUCTS  
BOLLARD

|               |           |   |   |     |   |
|---------------|-----------|---|---|-----|---|
| DATE          |           |   |   |     |   |
| PROJECT NAME  |           |   |   |     |   |
| TYPE          |           |   |   |     |   |
| QTY           |           |   |   |     |   |
| ORDERING CODE | AE-OD-DN2 | - | - | -80 | - |

## OVERVIEW



### **MULTIPLE SIZES**

Available in 6 and 8" diameter bore sizes, with heights of 32, and 42" depending on the lumen package selected.

### **PREMIUM MATERIALS**

Aluminum die-cast housing and plate for enhanced thermal heat dissipation and structural integrity.

### **CORROSION RESISTANT FINISH**

Thermoset powder coat finish combined with anti-cracking marine grade corrosion resistant finish to withstand harsh environmental conditions.

### **OPTICAL GLASS**

360-degree optical polymer.

