

IRIS

TRACK LIGHTING

Track Fixture



The IRIS series has a distinctive look with a semi-exposed heatsink. This product features four possible beam distributions ranging from narrow flood, flood, wide flood and very wide flood. This product also comes standard at 90 CRI but also caters to lighting experts with a high-GAI (Gamut Area Index) option for an enhanced visual effect on products.

eralux®



DATE	
PROJECT NAME	
TYPE	
QTY	
ORDERING CODE	AE-TL-IR12

OPERATING & ELECTRICAL

INPUT VOLTAGE	120 V
POWER FACTOR	0.9
DIMMING	Triac dimming
TOTAL HARMONIC DISTORTION (THD)	<20%

PERFORMANCE

LUMENS PER WATT	81-93 LPW at 90CRI
POWER CONSUMPTION	14W
DISTRIBUTION	Narrow flood, Flood, Wide Flood, Very Wide Flood

MECHANICAL & HOUSING

HOUSING	Aluminum die cast
LENS	High durable polycarbonate and high transmittance lens
FINISH	Black, White, Silver
POWER SUPPLY	Factory wired electronic LED driver
LED BOARD	COB

APPLICATION CONDITION

AMBIENT TEMPERATURE RANGE	-10 °C to 35°C
---------------------------	----------------

COMPATIBLE MOUNTING

MOUNTING

Juno
Global
Halo
Lightolier

WARRANTY

SYSTEM WARRANTY – 5 YEARS

Eralux will warrant defective drivers, LEDs and boards for 5 years from the date of purchase. This warranty is valid only if the fixture is installed and used as per installation guides and specifications. If a defect is present, Eralux will send drivers and boards at no fee with a thorough replacement instructions along with instructions on the return of the defective parts back to Eralux.

LUMEN MAINTENANCE – L70 at 50,000 hours

Rated for 70% initial lumen output at 50,000 hours of operation, operated at 25°C ambient temperature; per guidelines published by the Illuminating Engineering Society (IES)

DATE	
PROJECT NAME	
TYPE	
QTY	
ORDERING CODE	AE-TL-IR12

ORDERING GUIDE

EXAMPLE: AE-TL-IR12NFP30J1BK

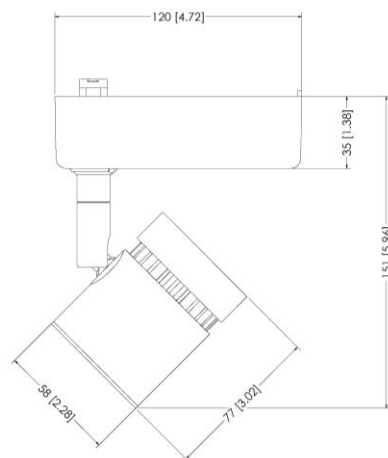
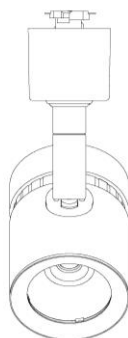
FIXTURE FAMILY	INPUT VOLTAGE	DISTRIBUTION	CRI	CCT	ADAPTER	FINISH
AE-TL-IR	12					
AE-TL-IR ERALUX Iris Series track light with up to 1,302 lumens	12 120V	NF Narrow Flood light distribution 18° CBCP: 7494 @ 90 CRI	P Premium 90 CRI	27 2700K CCT	J1 Juno mounting system	BK Black powder coat finish
		FL Flood light distribution 21° CBCP: 5908 @ 90 CRI	S* Superior HIGH GAI	30 3000K CCT	G1 Global mounting system	WH White powder coat finish
				35 3500K CCT		
		WF Wide Flood light distribution 36° CBCP: 2721 @ 90 CRI		40 4000K CCT	H1 Halo mounting system	SV Silver powder coat finish
		VF Very Wide flood distribution 59° CBCP: 1233 @ 90 CRI			L1 Lightolier mounting system	

*Available only at 3000k & 3500°

PRODUCT DIMENSIONS

AE-TL-IR12

Weight: 0.383 kg



LUMEN ESTIMATE

Lumen output varies based on CCT and CRI. An estimate of lumen output of the various CCT/CRI combinations, use correction factors as per table below:

LUMEN ESTIMATE ADJUSTMENT FACTORS				
CCT	2700K	3000K	3500K	4000K
NORMAL (80CRI)	0.93	1	1.07	1.07
PREMIUM (90CRI)	0.8	0.86	0.93	0.93.

PHOTOMETRIC DATA

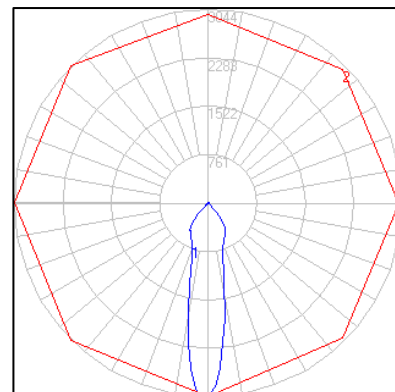
AE-TL-IR12NFX30X1XX

Narrow Flood

ZONAL LUMEN SUMMARY

ZONE	LUMENS	% OF FIXTURE
0-20°	496.59	39.70
0-30°	780.98	62.50
0-40°	1063.16	85.00
0-60°	1181.72	94.50
0-80°	1202.33	96.10
0-90°	1210.01	96.80

POLAR LUMINOUS INTENSITY GRAPH



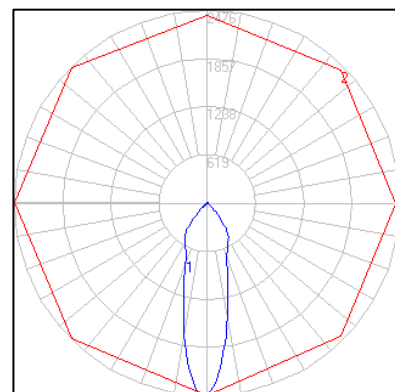
AE-TL-IR12FLX30X1XX

Flood

ZONAL LUMEN SUMMARY

ZONE	LUMENS	% OF FIXTURE
0-20°	492.02	39.90
0-30°	786.64	63.80
0-40°	1064.47	86.30
0-60°	1178.06	95.50
0-80°	1195.34	96.90
0-90°	1201.59	97.40

POLAR LUMINOUS INTENSITY GRAPH



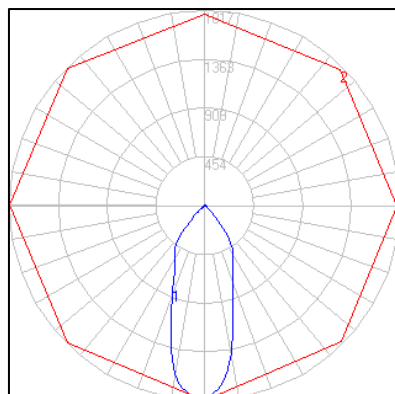
AE-TL-IR12FLX30X1XX

Wide Flood

ZONAL LUMEN SUMMARY

ZONE	LUMENS	% OF FIXTURE
0-20°	468.36	38.90
0-30°	765.87	63.60
0-40°	1036.21	86.00
0-60°	1149.14	95.40
0-80°	1167.96	97.00
0-90°	1173.57	97.40

POLAR LUMINOUS INTENSITY GRAPH

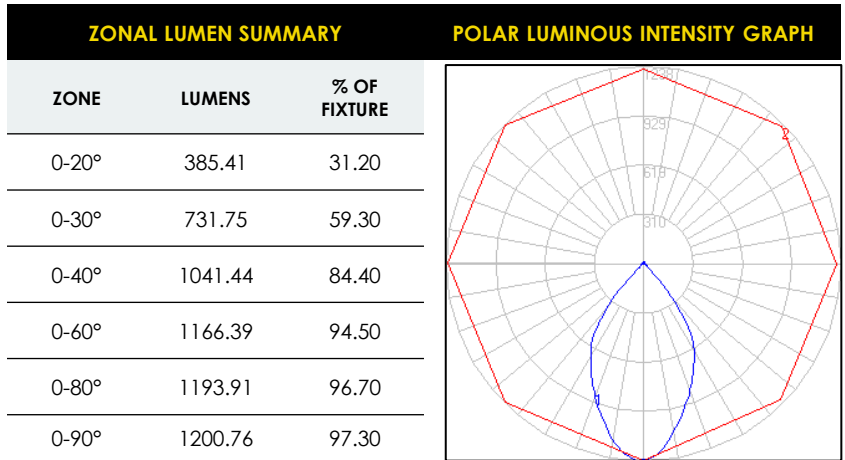


DATE	
PROJECT NAME	
TYPE	
QTY	
ORDERING CODE	AE-TL-IR12

PHOTOMETRIC DATA (CONTINUE)

AE-TL-IR12WFX30X1XX

Very Wide Flood



DIMMER COMPATIBILITY LIST

TRIAC/ELV Dimmer @120VAC
Lutron SLV-600X
Lutron S2-LX
Lutron GL-600H
Lutron NFTU-5A
Lutron DVLV-600P
Leviton 6602-X
Leviton 6681-X
Leviton 6683-X
Leviton 6684-X

TRIAC/ELV Dimmer @120VAC
Leviton 700-X
Leviton 705-X
Leviton 6633
Leviton 6674
Leviton IPI06-1LZ
Cooper 9530XXX
Lightolier MP600X
Advance SR150LED120

OVERVIEW



MULTIPLE MOUNTING ADAPTERS

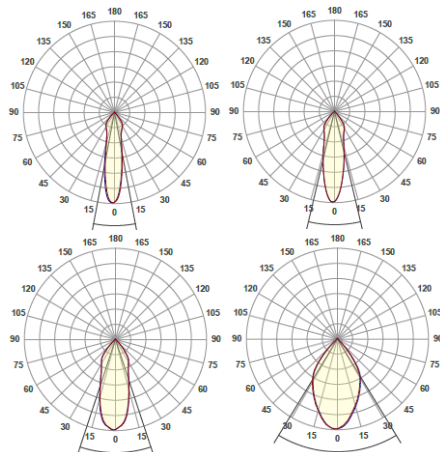
Choose from any of the popular track systems such as Juno, Halo, Lighttoller, or Global.

PAINT FINISH

Factory standard in black, white, and silver. Contact for custom paint finishes to enhance your fixture to suit your project space.

MULTIPLE OPTIONS

Customize your track head by selecting from a variety of, CCT, CRI, and beam angle options.



PREMIUM DESIGN

Aluminum die-cast materials selected for efficient thermal heat dissipation, enhanced structural rigidity maximizing LED life and driver function.