

MAVEN

TRACK LIGHTING

Track Fixture

The Maven tracklight is designed for versatility in any environment while appearing simplistic and timeless. Available in various CCT, and adapter options, MAVEN can mount to pre-existing tracks or be paired with other ERALUX accessories to build a new track system. MAVEN provides an even distribution at various beam angles. The LED head is adjustable for a 355° rotation and can bend up to 90° for a wide range of motion.



eralux®



DATE	
PROJECT NAME	
TYPE	
QTY	
ORDERING CODE	AE-TL-MV-12- P

OPERATING & ELECTRICAL

INPUT VOLTAGE	120 V
POWER FACTOR	>0.9
DIMMING	N/A
TOTAL HARMONIC DISTORTION (THD)	<30%

PERFORMANCE

LUMENS PER WATT	67-78 LPW at 90CRI
POWER CONSUMPTION	10.5W
DISTRIBUTION	Narrow Flood, Flood, Wide flood

MECHANICAL & HOUSING

HOUSING	Aluminum die cast
LENS	Highly durable polycarbonate lens
FINISH	Black, White, Silver
LED	AC LED
POWER SUPPLY	Not Applicable

APPLICATION CONDITION

AMBIENT TEMPERATURE RANGE	-10 °C to 35°C
---------------------------	----------------

COMPATIBLE MOUNTING

MOUNTING	Juno Global Halo Lightolier
----------	--------------------------------------

WARRANTY

SYSTEM WARRANTY – 5 YEARS

Eralux will warrant defective drivers, LEDs and boards for 5 years from the date of purchase. This warranty is valid only if the fixture is installed and used as per installation guides and specifications. If a defect is present, Eralux will send drivers and boards at no fee with a thorough replacement instructions along with instructions on the return of the defective parts back to Eralux.

LUMEN MAINTENANCE – L70 at 30,000 hours

Rated for 70% initial lumen output at 30,000 hours of operation, operated at 25°C ambient temperature; per guidelines published by the Illuminating Engineering Society (IES).

DATE	
PROJECT NAME	
TYPE	
QTY	
ORDERING CODE	AE-TL-MV-12- P

ORDERING GUIDE

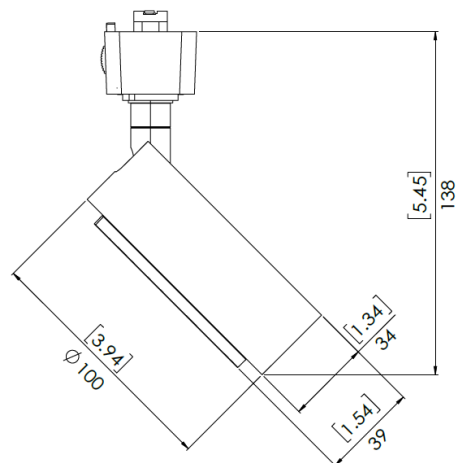
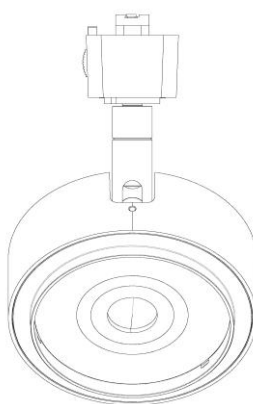
EXAMPLE: AE-TL-MV-12-FLP30J1BK

FIXTURE FAMILY	VOLTAGE	DISTRIBUTION	CRI	CCT	ADAPTER	FINISH
AE-TL-MV	-12	-	P			
AE-TL-MV ERALUX MAVEN Series track light	-12 120V	-NF Narrow Flood distribution: 25° 10.5 watts: 767 lumens at 90CR 3000K CBCP: 2750 @ 90 CRI	P Premium 90 CRI	30 3000K CCT	J1 Juno mounting system	BK Black powder coat finish
		-FL Flood light distribution: 40° 10.5 watts: 767 lumens at 90CRI 3000K CBCP: 1700 @ 90 CRI			G1 Global mounting system	WH White powder coat finish
					H1 Halo mounting system	SV Silver powder coat finish
		-WF Wide Flood light distribution: 65° 10.5 watts: 767 lumens at 90CRI 3000K CBCP: 620 @ 90 CRI		40 4000K CCT	L1 Lightolier mounting system	

PRODUCT DIMENSIONS (in mm)

AE-TL-MV-12-XXPXXX1XX

Weight: 0.485 kg



LUMEN ESTIMATE

Lumen output varies based on CCT and CRI. An estimate of lumen output of the various CCT/CRI combinations, use correction factors as per table below:

LUMEN ESTIMATE ADJUSTMENT FACTORS

CCT	3000K	4000K
PREMIUM (90CRI)	0.86	0.93

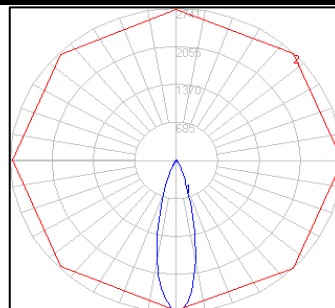
PHOTOMETRIC DATA

AE-TL-MV-12-NFP30X1XX

ZONAL LUMEN SUMMARY

ZONE	LUMENS	% OF FIXTURE
0-20°	502.90	65.90
0-30°	629.30	82.50
0-40°	678.30	88.90
0-60°	709.29	92.90
0-80°	724.73	95.00
0-90°	730.44	95.70

POLAR LUMINOUS INTENSITY GRAPH

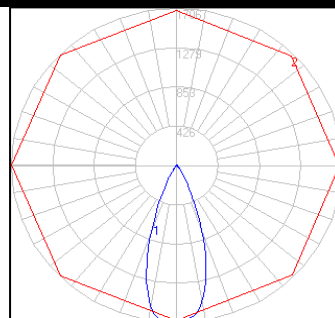


AE-TL-MV-12-FLP30X1XX

ZONAL LUMEN SUMMARY

ZONE	LUMENS	% OF FIXTURE
0-20°	472.43	60.50
0-30°	654.02	83.70
0-40°	708.71	90.70
0-60°	734.46	94.00
0-80°	747.28	95.70
0-90°	752.18	96.30

POLAR LUMINOUS INTENSITY GRAPH

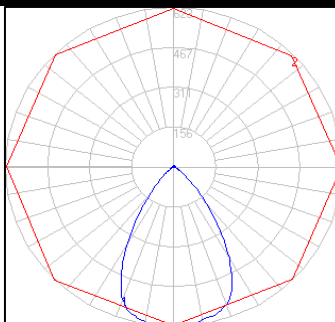


AE-TL-MV-12-WFP30X1XX

ZONAL LUMEN SUMMARY

ZONE	LUMENS	% OF FIXTURE
0-20°	225.77	30.00
0-30°	445.04	59.10
0-40°	608.64	80.80
0-60°	707.01	93.90
0-80°	721.67	95.80
0-90°	726.30	96.40

POLAR LUMINOUS INTENSITY GRAPH



DIMMER COMPATIBILITY LIST

TRIAC/ELV Dimmer @120VAC

Lutron N-600-AL

Lutron DVELV-300P-WH

Lutron CTCL-153P

LEVITON IPL06

DATE	
PROJECT NAME	
TYPE	
QTY	
ORDERING CODE	AE-TL-MV-12- P

OVERVIEW

MULTIPLE MOUNTING ADAPTERS

Choose from any of the popular track systems such as Juno, Halo, or Global



PAINT FINISH

Factory standard in black, white, and silver. Contact for custom paint finishes to enhance your fixture to suit your project space.



PREMIUM DESIGN

Aluminum die-cast materials selected for efficient thermal heat dissipation, enhanced structural rigidity maximizing LED life and driver function.

MULTIPLE OPTIONS

Customize your track head by selecting from a variety of CCT, CRI, and beam angle options. Maven Series also have single canopy mount and exposed driver options that you can choose to fulfill various project needs.