

# RIZZUTO

## OUTDOOR PRODUCTS

### Outdoor area light

The Rizzuto Series combines the desire for high efficacy and a distinguished look in an outdoor luminaire. The Rizzuto Series' mounting methods and variety of light distribution patterns, allows you to tailor your luminaire to your lighting needs. With power options reaching up to 39,000 lumens, the Rizzuto outdoor luminaire shows that performance and functionality can be simultaneously achieved. Our fixture comes standard with a 3 pin NEMA base as well as a 20KV SPD.



eralux®

IP65



DATE

PROJECT  
NAME

TYPE

QTY

ORDERING  
CODE

AE-OD-RZ- - W -7 - -T - -

### OPERATING & ELECTRICAL

INPUT VOLTAGE 120-277V, 277-480V

POWER FACTOR 0.9

DIMMING 0-10V

TOTAL HARMONIC  
DISTORTION (THD) <20%

### PERFORMANCE

LUMENS PER WATT 130 LPW at 70CRI

POWER  
CONSUMPTION 100W, 150W, 200W, 240W, 300W

DISTRIBUTION Types 2, 3, 4, 5

### MECHANICAL & HOUSING

HOUSING

Aluminum die cast housing for superior heat dissipation, strength, and rigidity critical to long LED system life.

LENS

Highly durable polycarbonate lens ensures high efficiency light output for a clean, evenly illuminated surface with minimal glare. High transmittance lens allowing for a smooth, diffused light pattern. Glass lens available

FINISH

Powder coat fade and abrasion resistant finish for the toughest outdoor conditions. Available in black, bronze, Nebula white, Aluminum (RAL9006) finishes.

POWER SUPPLY Factory wired electronic LED driver

LED BOARD Light emitted source

### APPLICATION CONDITION

AMBIENT  
TEMPERATURE  
RANGE

-40°C to 40°C

Protection

Fixture and driver IP65 rated, 3G vibration tested conforms to ANSI standards.

### COMPATIBLE MOUNTING

MOUNTING

Direct, Slip fitter, Rd./Sq. pole, trunnion

### WARRANTY

#### SYSTEM WARRANTY – 5 YEARS

Eralux will warrant defective drivers, LEDs and boards for 5 years from the date of purchase. This warranty is valid only if the fixture is installed and used as per installation guides and specifications. If a defect is present, Eralux will send drivers and boards at no fee with a thorough replacement instructions along with instructions on the return of the defective parts back to Eralux.

#### LUMEN MAINTENANCE – L70 at 50,000 hours

Rated for 70% initial lumen output at 50,000 hours of operation, operated at 25°C ambient temperature; per guidelines published by the Illuminating Engineering Society (IES).

|               |                           |
|---------------|---------------------------|
| DATE          |                           |
| PROJECT NAME  |                           |
| TYPE          |                           |
| QTY           |                           |
| ORDERING CODE | AE-OD-RZ- - W -7 - -T - - |

## ORDERING GUIDE

EXAMPLE: AE-OD-RZ-100W-740-DU-T4-D-BK

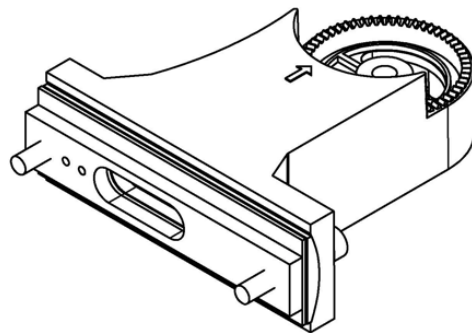
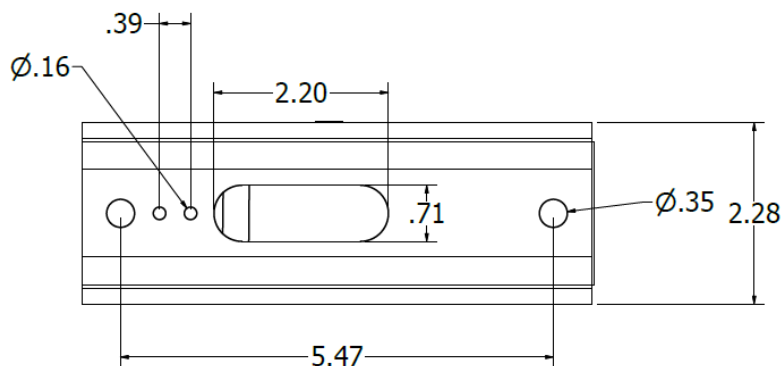
| FIXTURE FAMILY   | POWER                                | CRI          | CCT                                  | CONTROLS                                 | VOLTAGE                             | DISTRIBUTION                         | MOUNTING TYPE        | FINISH   |
|--|--------------------------------------|--------------|--------------------------------------|--|-------------------------------------|--------------------------------------|----------------------|--|
| AE-OD-RZ   | - W                                  | -7           |                                      | -  |                                     | -T                                   | -                    | -  |
| AE-OD-RZ<br><br>ERALUX Rizzuto Series outdoor area light fixture | -100W<br>100 Watts:<br>13,000 lumens | -7<br>70 CRI | 22<br>2200K CCT                      | -D<br>0-10V external dimming down to 10% | U<br>100-277Vac input voltage range | -T2<br>Type 2                        | -A<br>Slip Fitter    | -BK<br>Black powder coat finish                |
|  |                                      |              | 30<br>3000K CCT                      |  |                                     |                                      | -B<br>Direct Bracket | -BZ<br>Bronze powder coat finish               |
|  | -150W<br>150 Watts:<br>19,500 lumens |              |                                      |  |                                     | -T3<br>Type 3                        | -C<br>Trunnion       | -WH<br>ERALUX Nebula white powder coat finish* |
|  |                                      |              | -200W<br>200 Watts:<br>26,000 lumens | -T4<br>Type 4                            | -D<br>No Mounting                   |                                      |                      |  |
|  |                                      |              |                                      |  |                                     | -240W<br>240 Watts:<br>31,200 lumens | -T5<br>Type 5        |  |
|  | -300W<br>300 Watts:<br>39,000 lumens |              | -F<br>Yoke mount                     |  |                                     |                                      |                      |  |
|  |                                      |              |                                      | 50<br>5000K CCT                          | -P<br>Photocontrol daylight sensor  | H<br>200-480Vac input voltage range  |                      |  |
|  | 65<br>6500K CCT                      |              |                                      |  |                                     |                                      |                      |  |
|  |                                      |              |                                      |  |                                     |                                      |                      |  |
|  |                                      |              |                                      |  |                                     |                                      |                      |  |
|  |                                      |              |                                      |  |                                     |                                      |                      |  |

\*Contact for details on leadtime and availability

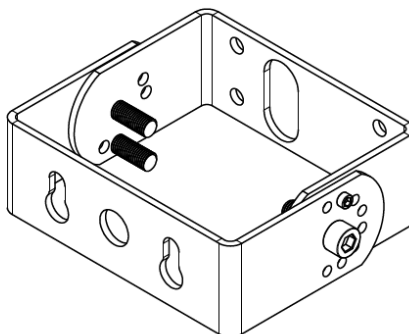
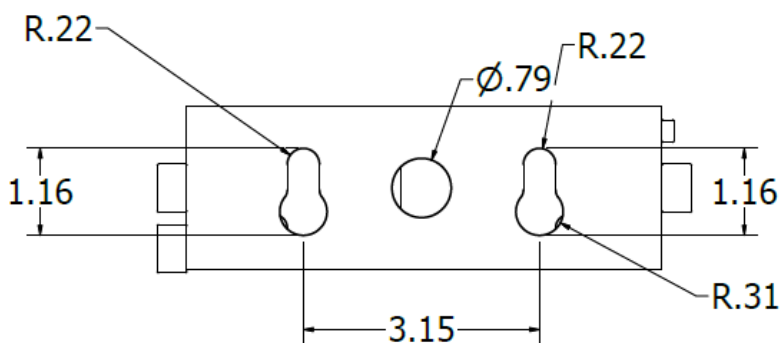
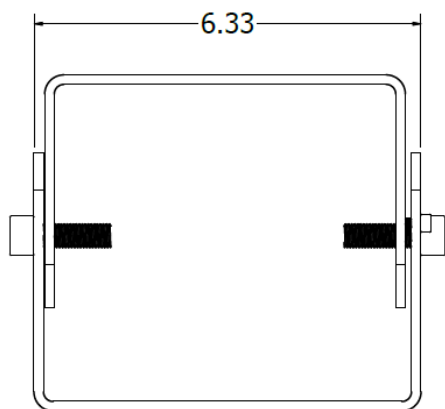
|               |                           |
|---------------|---------------------------|
| DATE          |                           |
| PROJECT NAME  |                           |
| TYPE          |                           |
| QTY           |                           |
| ORDERING CODE | AE-OD-RZ- - W -7 - -T - - |

## BRACKETS DIMENSIONS(IN INCHES)

### DIRECT



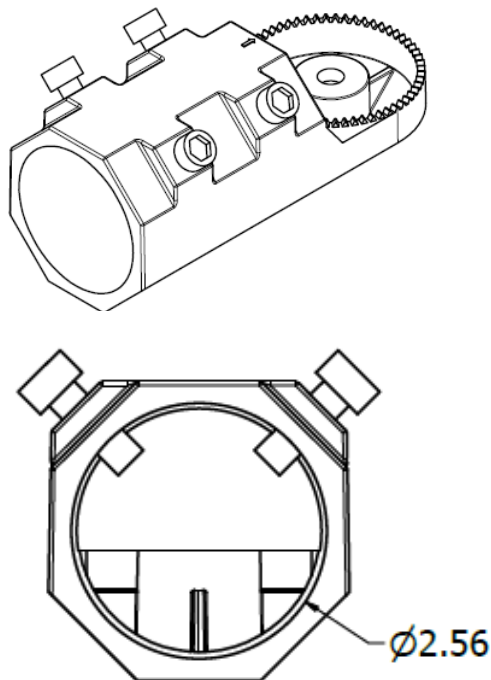
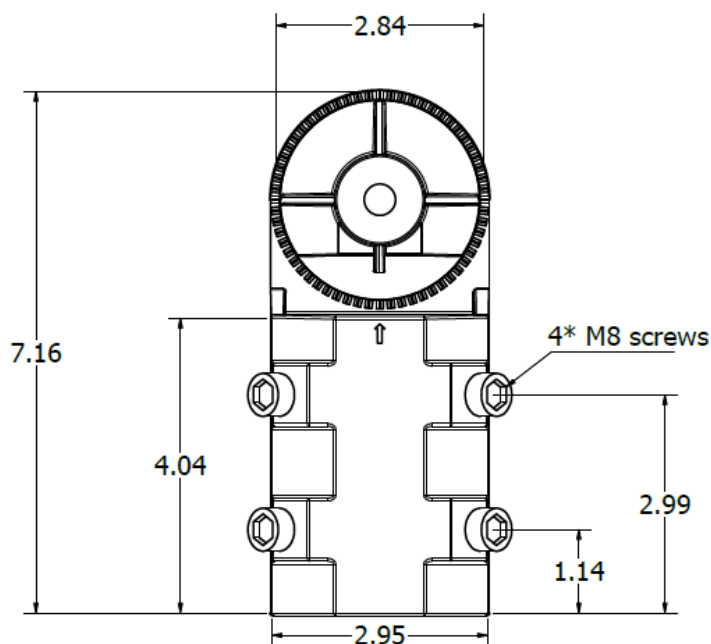
### TRUNNION



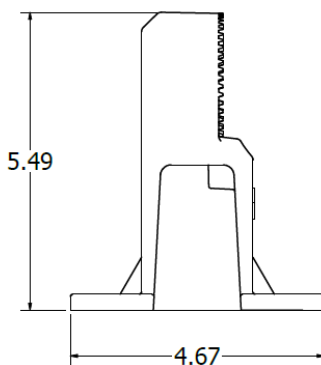
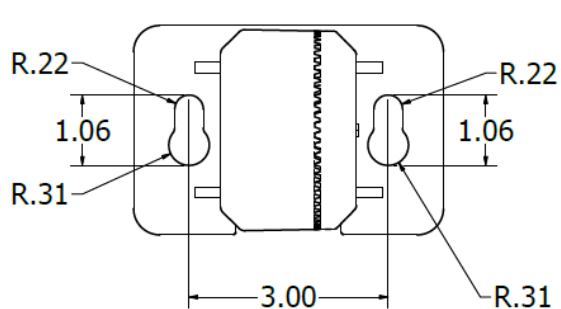
|               |                           |
|---------------|---------------------------|
| DATE          |                           |
| PROJECT NAME  |                           |
| <b>TYPE</b>   |                           |
| QTY           |                           |
| ORDERING CODE | AE-OD-RZ- - W -7 - -T - - |

## BRACKETS DIMENSIONS (IN INCHES)

### SLIP FITTER



### YOKE MOUNT



|               |                           |
|---------------|---------------------------|
| DATE          |                           |
| PROJECT NAME  |                           |
| TYPE          |                           |
| QTY           |                           |
| ORDERING CODE | AE-OD-RZ- - W -7 - -T - - |

## ACCESSORIES

Ordered separately

## MOUNTING METHODS

| FIXTURE FAMILY  | MOUNTING METHOD                            | FINISH  |
|---|--|---|
| <b>AE-OD-RZ</b>   | -  | -   |
| <b>AE-OD-RZ</b><br>ERALUX Rizzuto Series outdoor area light fixture | <b>-SF</b><br>Slip fitter mounting bracket | <b>-BK</b><br>Black powder coat finish              |
|   | <b>-DI</b><br>Direct mounting bracket      | <b>-BZ</b><br>Bronze powder coat finish             |
|   | <b>-YM</b><br>Yoke mount bracket           | <b>-AL</b><br>Aluminum(RAL9006) powder coat finish* |
|   | <b>-TR</b><br>Trunnion mount bracket       |   |

| FIXTURE FAMILY  | MOUNTING METHOD                       | FINISH  | POWER RANGE                   |
|---|---------------------------------------|---|-------------------------------|
| <b>AE-OD-RZ</b>   | -                                     | -   | -                             |
| <b>AE-OD-RZ</b><br>ERALUX Rizzuto Series outdoor area light fixture | <b>-UBKT</b><br>Floodlight U Brackets | <b>-BK</b><br>Black powder coat finish              | <b>-150W</b><br>60-150 Watts  |
|   |                                       | <b>-BZ</b><br>Bronze powder coat finish             |                               |
|   |                                       | <b>-WH</b><br>White powder coat finish              | <b>-300W</b><br>200-300 Watts |
|   |                                       | <b>-AL</b><br>Aluminum(RAL9006) powder coat finish* |                               |

## CONTROLS

| FIXTURE FAMILY  | CONTROLS                                  |
|---|---|
| <b>AE-OD-RZ</b>   | -   |
| <b>AE-OD-RZ</b><br>ERALUX Rizzuto Series outdoor area light fixture | <b>-MIC-MS</b><br>Microwave motion sensor |
|   | <b>-LA</b><br>Lightning arrestor          |
|   | <b>-SB</b><br>Socket base of photocell    |

| FIXTURE FAMILY  | CONTROLS                   |
|---|----------------------------|
| <b>AE-OD-RZ</b>   | -                          |
| <b>AE-OD-RZ</b><br>ERALUX Rizzuto Series outdoor area light fixture | <b>-PC</b><br>Photocell    |
|   | <b>-SC</b><br>Shorting cap |

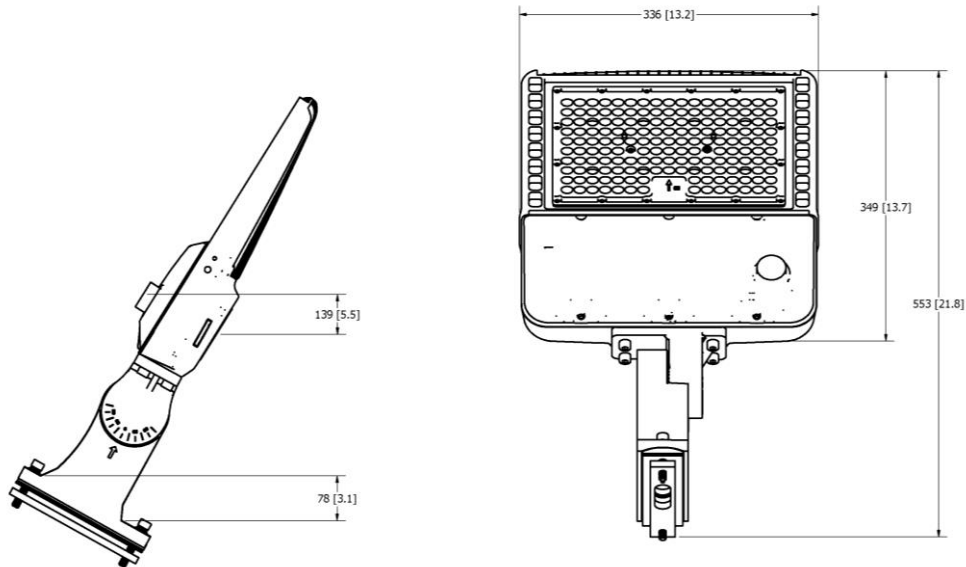
## OPTICAL SHIELDS

| FIXTURE FAMILY  | OPTICAL SHIELD                    | POWER RANGE                       | FINISH  |
|---|-----------------------------------|-----------------------------------|---|
| <b>AE-OD-RZ</b>   | <b>-OS</b>                        | -                                 | -   |
| <b>AE-OD-RZ</b><br>ERALUX Rizzuto Series outdoor area light fixture | <b>-OS</b><br>Back Optical Shield | <b>-60-150W</b><br>60-150 Watts   | <b>-BK</b><br>Black powder coat finish                |
|   |                                   |                                   | <b>-BZ</b><br>Bronze powder coat finish               |
|   |                                   | <b>-200-300W</b><br>200-300 Watts | <b>-WH</b><br>ERALUX Nebula white powder coat finish* |
|   |                                   |                                   | <b>-AL</b><br>Aluminum(RAL9006) powder coat finish*   |

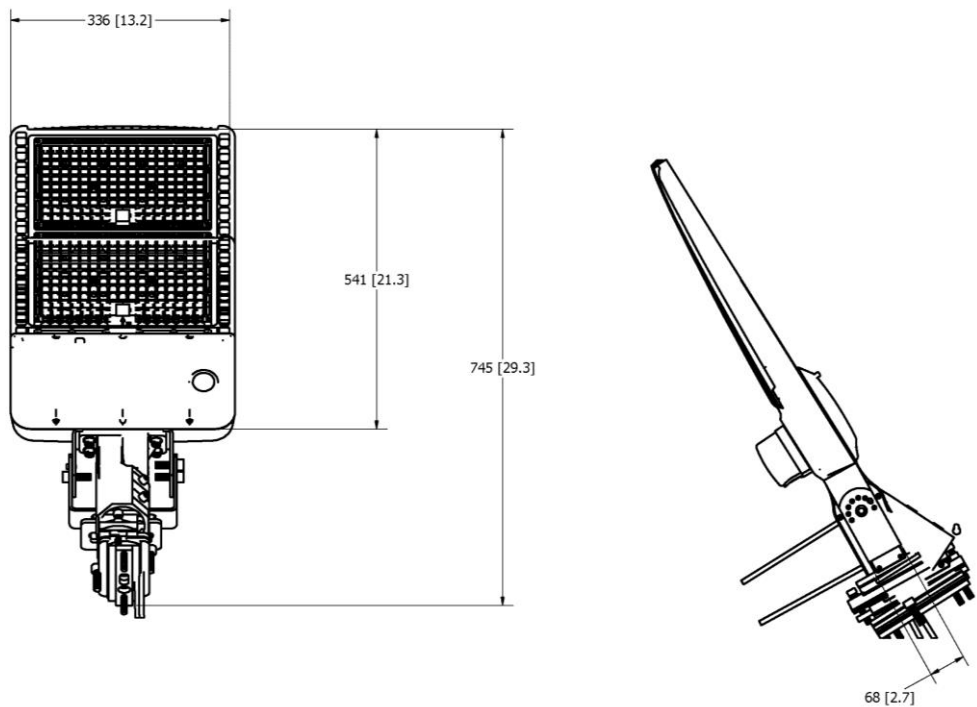
|               |           |   |   |    |   |    |   |
|---------------|-----------|---|---|----|---|----|---|
| DATE          |           |   |   |    |   |    |   |
| PROJECT NAME  |           |   |   |    |   |    |   |
| TYPE          |           |   |   |    |   |    |   |
| QTY           |           |   |   |    |   |    |   |
| ORDERING CODE | AE-OD-RZ- | - | W | -7 | - | -T | - |

PRODUCT DIMENSIONS

AE-OD-RZ-100W, AE-OD-RZ-150W



AE-OD-RZ-200W, AE-OD-RZ-240W, AE-OD-RZ-300W



|               |                           |
|---------------|---------------------------|
| DATE          |                           |
| PROJECT NAME  |                           |
| TYPE          |                           |
| QTY           |                           |
| ORDERING CODE | AE-OD-RZ- - W -7 - -T - - |

## WEIGHT INFORMATION WITH ACCESSORIES

| POWER | ACCESSORIES | WEIGHT |
|-------|-------------|--------|
| -100W | SF          | 5.9KG  |
|       | DI          | 6.1KG  |
|       | YM          | 5.51KG |
|       | TR          | 5.8KG  |

| POWER | ACCESSORIES | WEIGHT |
|-------|-------------|--------|
| -150W | SF          | 5.98KG |
|       | DI          | 6.28KG |
|       | YM          | 5.59KG |
|       | TR          | 5.85KG |

| POWER | ACCESSORIES | WEIGHT |
|-------|-------------|--------|
| -200W | SF          | 8.55KG |
|       | DI          | 8.85KG |
|       | YM          | 8.16KG |
|       | TR          | 8.41KG |

| POWER | ACCESSORIES | WEIGHT |
|-------|-------------|--------|
| -300W | SF          | 9.15KG |
|       | DI          | 9.45KG |
|       | YM          | 8.76KG |
|       | TR          | 9.05KG |

## EPA (Effective Projected Area) WITH ACCESSORIES

| POWER       | ACCESSORIES | EPA       |
|-------------|-------------|-----------|
| 100W & 150W | SF          | 0.432 FT² |
|             | DI          | 0.507 FT² |
|             | SR          | 0.516 FT² |
|             | TR          | 0.342 FT² |
|             | YM          | 0.385 FT² |

| POWER       | ACCESSORIES | EPA       |
|-------------|-------------|-----------|
| 200W & 300W | SF          | 0.587 FT² |
|             | DI          | 0.673 FT² |
|             | SR          | 0.656 FT² |
|             | TR          | 0.481 FT² |
|             | YM          | 0.579 FT² |

## B-U-G RATING

| POWER | DISTRIBUTION | B-U-G    |
|-------|--------------|----------|
| 100W  | T2           | B3-U3-G3 |
|       | T3           | B3-U3-G3 |
|       | T4           | B3-U2-G3 |
|       | T5           | B4-U3-G2 |
| 150W  | T2           | B3-U3-G3 |
|       | T3           | B3-U3-G3 |
|       | T4           | B4-U3-G4 |
|       | T5           | B4-U3-G2 |
| 200W  | T2           | B4-U3-G4 |
|       | T3           | B4-U3-G4 |
|       | T4           | B4-U3-G4 |
|       | T5           | B5-U3-G3 |
| 300W  | T2           | B4-U3-G4 |
|       | T3           | B4-U3-G4 |
|       | T4           | B5-U3-G4 |
|       | T5           | B5-U3-G4 |

|               |                           |
|---------------|---------------------------|
| DATE          |                           |
| PROJECT NAME  |                           |
| TYPE          |                           |
| QTY           |                           |
| ORDERING CODE | AE-OD-RZ- - W -7 - -T - - |

## LUMEN ESTIMATE

Lumen output varies based on CCT and CRI. An estimate of lumen output of the various CCT/CRI combinations, use correction factors as per table below:

| LUMEN ESTIMATE ADJUSTMENT FACTORS |       |       |       |       |
|-----------------------------------|-------|-------|-------|-------|
| CCT                               | 2700K | 3000K | 3500K | 4000K |
| 70 CRI                            | 0.91  | 0.94  | 0.97  | 1     |

## PHOTOMETRIC DATA

AE-OD-RZ-60W-750-XU-T2-X-XX

TYPE 2 DISTRIBUTION

60 WATTS

5000K CCT

70 CRI

| ZONAL LUMEN SUMMARY |         |              | POLAR LUMINOUS INTENSITY GRAPH |
|---------------------|---------|--------------|--------------------------------|
| ZONE                | LUMENS  | % OF FIXTURE |                                |
| 0-20°               | 727.78  | 8.70         |                                |
| 0-30°               | 1619.85 | 19.40        |                                |
| 0-40°               | 2815.65 | 33.70        |                                |
| 0-60°               | 5754.67 | 68.90        |                                |
| 0-80°               | 8205.24 | 98.20        |                                |
| 0-90°               | 8284.66 | 99.20        |                                |

AE-OD-RZ-300W-750-XU-T3-X-XX

TYPE 3 DISTRIBUTION

300 WATTS

70 CRI

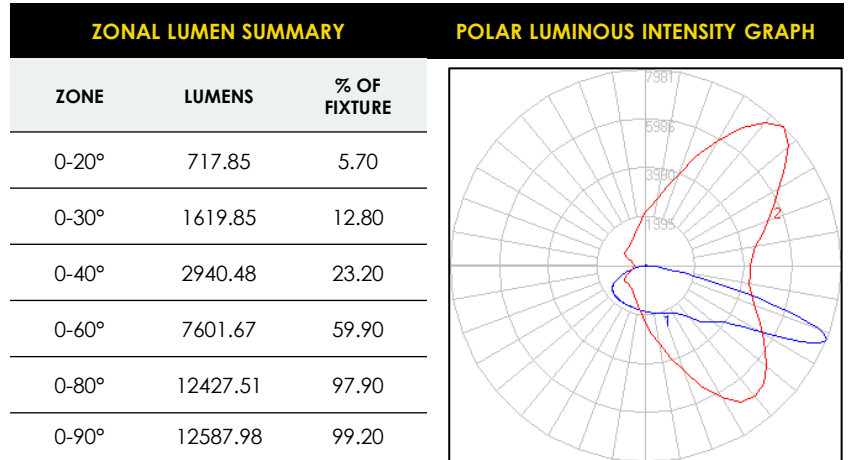
5000K CCT

| ZONAL LUMEN SUMMARY |          |              | POLAR LUMINOUS INTENSITY GRAPH |
|---------------------|----------|--------------|--------------------------------|
| ZONE                | LUMENS   | % OF FIXTURE |                                |
| 0-20°               | 2874.64  | 7.30         |                                |
| 0-30°               | 6389.8   | 16.20        |                                |
| 0-40°               | 11314.64 | 28.70        |                                |
| 0-60°               | 25248.48 | 63.90        |                                |
| 0-80°               | 38427.84 | 97.30        |                                |
| 0-90°               | 39178.3  | 99.20        |                                |

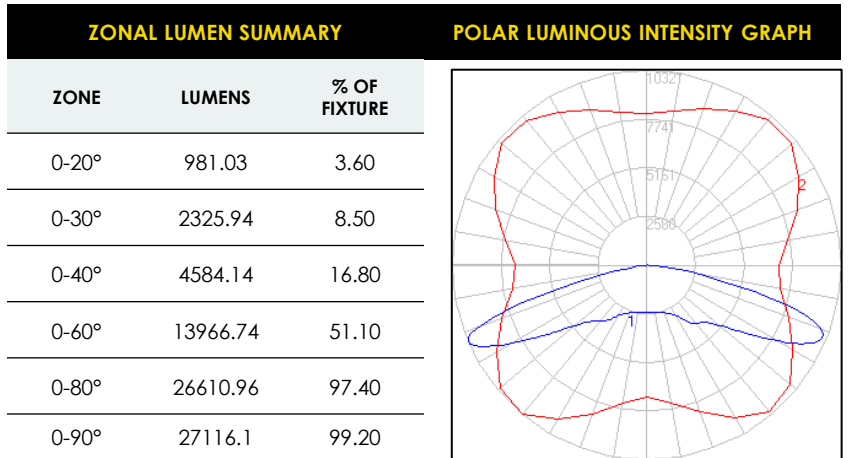
|               |                           |
|---------------|---------------------------|
| DATE          |                           |
| PROJECT NAME  |                           |
| <b>TYPE</b>   |                           |
| QTY           |                           |
| ORDERING CODE | AE-OD-RZ- - W -7 - -T - - |

## PHOTOMETRIC DATA(CONTINUED)

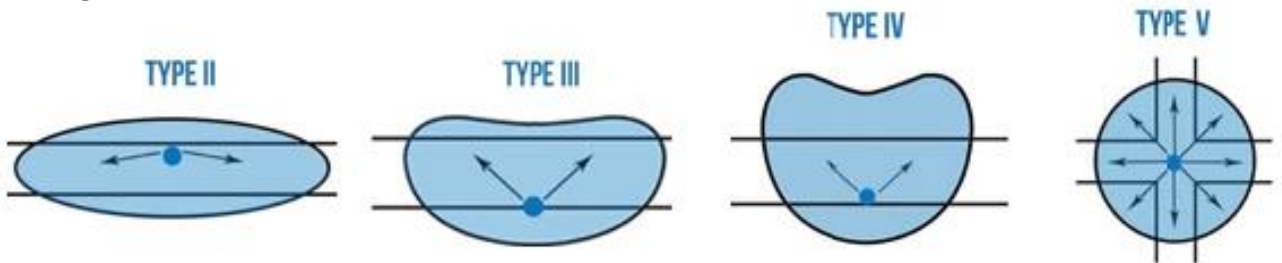
AE-OD-RZ-100W-750-XU-T4-X-XX  
TYPE 4 DISTRIBUTION  
100 WATTS  
5000K CCT  
70 CRI



AE-OD-RZ-200W-750-XU-T5-X-XX  
TYPE 5 DISTRIBUTION  
200 WATTS  
5000K CCT  
70 CRI



## Light Distribution



|               |                           |
|---------------|---------------------------|
| DATE          |                           |
| PROJECT NAME  |                           |
| TYPE          |                           |
| QTY           |                           |
| ORDERING CODE | AE-OD-RZ- - W -7 - -T - - |

## OVERVIEW

### MULTIPLE MOUNTING STYLES

Rizzuto area light is compatible, and factory mounted to your choice of mounting method from direct bracket, yoke or slip fitter option.

### ENERGY EFFICIENT

High-efficacy output of 130 lumen per watt at 70 CRI.

### PROTECTION

IP65 waterproof and 3G vibration tested conforms to ANSI standards.

### ACCESSORIES

Choose from a range of accessories from optical shields to photocell caps.



### PREMIUM MATERIALS & DESIGN

Constructed out of aluminum die cast for enhanced thermal heat dissipation for long lasting LED and driver function. Heat sink constructed into the fixture's housing to facilitate heat transfer.

