

# TERRA

## TRACK LIGHTING

Wall wash Track Fixture



eralux®



Equipped with a power supply, the TERRA wall wash series is capable of more than other track lights. TERRA has a programmable driver, smart control capabilities, and dimmer compatibility. The TERRA is made for the track system with various adapter options. TERRA can adapt to your pre-existing track system or with new ERALUX accessories. Like the TERRA Canopy, the fixture will offer a double asymmetric beam of light. The LED head can lock into place at various angles. You can choose a straight downlight or a perpendicular light to the wall.

DATE

PROJECT  
NAME

TYPE

QTY

ORDERING  
CODE

AE-TL-TR-UV-DAP

### OPERATING & ELECTRICAL

INPUT VOLTAGE 120-277V

POWER FACTOR >0.9

DIMMING Triac dimming

TOTAL HARMONIC  
DISTORTION (THD) <20%

### PERFORMANCE

LUMENS PER WATT 54-58 LPW at 90CRI

POWER  
CONSUMPTION 30W

DISTRIBUTION Double Asymmetrical, 25°

### MECHANICAL & HOUSING

HOUSING Aluminum die cast

LENS Highly durable polycarbonate and  
high transmittance lens

FINISH Black, White, Silver

POWER SUPPLY Factory wired electronic LED driver

LED BOARD COB

### APPLICATION CONDITION

AMBIENT TEMPERATURE  
RANGE -10 °C to 35°C

### COMPATIBLE MOUNTING

MOUNTING

Juno  
Global  
Halo  
Lightolier

### WARRANTY

SYSTEM WARRANTY – 5 YEARS

Eralux will warrant defective drivers, LEDs and boards for 5 years from the date of purchase. This warranty is valid only if the fixture is installed and used as per installation guides and specifications. If a defect is present, Eralux will send drivers and boards at no fee with a thorough replacement instructions along with instructions on the return of the defective parts back to Eralux.

LUMEN MAINTENANCE – L70 at 50,000 hours

Rated for 70% initial lumen output at 50,000 hours of operation, operated at 25°C ambient temperature; per guidelines published by the Illuminating Engineering Society (IES)

DATE	
PROJECT NAME	
TYPE	
QTY	
ORDERING CODE	AE-TL-TR-UV-DAP

## ORDERING GUIDE

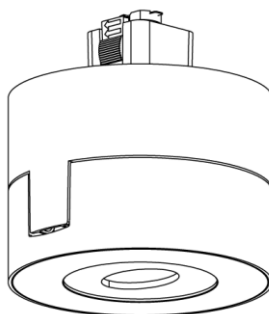
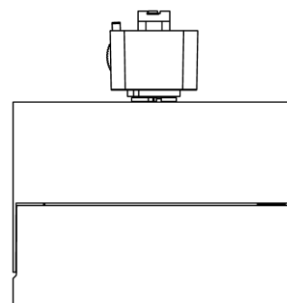
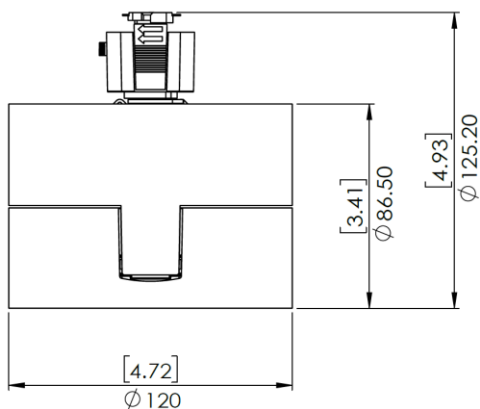
EXAMPLE: AE-TL-TR-UV-DAP30J1BK

FIXTURE FAMILY	VOLTAGE	DISTRIBUTION	CRI	CCT	ADAPTER	FINISH
<b>AE-TL-TR</b>	<b>-UV</b>	<b>-DA</b>	<b>P</b>			
<b>AE-TL-TR</b> ERALUX TERRA Wall wash track light	<b>-UV</b> 120V-277V	<b>-DA</b> 30 watts: 1,620 lumens at 3000K Double Asymmetrical, 25°	<b>P</b> Premium 90 CRI	<b>27</b> 2700K CCT	<b>J1</b> Juno mounting system	<b>BK</b> Black powder coat finish
				<b>30</b> 3000K CCT	<b>G1</b> Global mounting system	<b>WH</b> White powder coat finish
				<b>35</b> 3500K CCT	<b>H1</b> Halo mounting system	<b>SV</b> Silver powder coat finish
				<b>40</b> 4000K CCT	<b>L1</b> Lightolier mounting system	

## PRODUCT DIMENSIONS

AE-TL-TR

Weight: 1.050 kg



DATE	
PROJECT NAME	
TYPE	
QTY	
ORDERING CODE	AE-TL-TR-UV-DAP

## LUMEN ESTIMATE

Lumen output varies based on CCT and CRI. An estimate of lumen output of the various CCT/CRI combinations, use correction factors as per table below:

LUMEN ESTIMATE ADJUSTMENT FACTORS			
CCT	3000K	3500K	4000K
PREMIUM (90CRI)	1	1.03	1.06

## PHOTOMETRIC DATA

AE-TL-TR-UV-DAP30X1XX

30 WATTS

3000K CCT

PREMIUM 90 CRI

ZONAL LUMEN SUMMARY			POLAR LUMINOUS INTENSITY GRAPH
ZONE	LUMENS	% OF FIXTURE	
0-20°	222.95	10.90	
0-30°	588.88	28.70	
0-40°	1070.34	52.10	
0-60°	1813.87	88.40	
0-80°	1999.05	97.40	
0-90°	2009.65	97.90	

## DIMMER COMPATIBILITY LIST

TRIAC/ELV Dimmer @120VAC
Lutron SLV-600X
Lutron S2-LX
Lutron GL-600H
Lutron NFTU-5A
Lutron DVLV-600P
Leviton 6602-X
Leviton 6681-X
Leviton 6683-X
Leviton 6684-X

TRIAC/ELV Dimmer @120VAC
Leviton 700-X
Leviton 705-X
Leviton 6633
Leviton 6674
Leviton IPI06-1LZ
Cooper 9530XXX
Lightolier MP600X
Advance SR150LED120

0-10V Dimmer @120VAC
Lutron, Diva series (part number DVTV)
Lutron, Nova series (part number NFTV)
Leviton, IllumaTech series (part number IP710-DL)

DATE	
PROJECT NAME	
TYPE	
QTY	
ORDERING CODE	AE-TL-TR-UV-DAP

## OVERVIEW



### MULTIPLE MOUNTING ADAPTERS

Choose from any of the popular track systems such as Juno, Halo, Lightolier, or Global.

### PREMIUM DESIGN

Aluminum die-cast materials selected for efficient thermal heat dissipation, enhanced structural rigidity maximizing LED life and driver function. Integrated components allow for small stem and clean aesthetic appearance.

### MULTIPLE OPTIONS

Customize your track head by selecting from a variety of CCT options allowing you to have a unique fixture that suits your project.

### PAINT FINISH

Factory standard in black, white, and silver. Contact for custom paint finishes to enhance your fixture to suit your project space.

### DOUBLE ASYMMETRICAL LENS

DA lens is to deliver bat-wing light projecting to shelves at two side of corridor with minimum on-axis light coming from top. Using one column of light heads for double-side lighting purpose.