

CHANDRA GRANDE

TRACK LIGHTING

Track Fixture

The CHANDRA GRANDE track lighting fixture distinguishes itself with its sleek look, variety of optical options, and a series of accessories to adapt to every possible scenario. The installation of accessories on this product is simply a breeze. This enables fast deployment of fixtures around stores for reconfigurations of products. This product also comes standard at 90 CRI. Further, wattage selectable feature provides CHANDRA GRANDE with high flexibility. Another distinguishing feature is that with the right track adapter, this fixture can also provide Triac dimming.



eralux®



DATE	
PROJECT NAME	
TYPE	
QTY	
ORDERING CODE	AE-TL-CDG-XXW
	P

OPERATING & ELECTRICAL

INPUT VOLTAGE	120V-277V
POWER FACTOR	>0.9
DIMMING	TRIAC/ELV
TOTAL HARMONIC DISTORTION (THD)	<20%

PERFORMANCE

LUMENS PER WATT	71-95 LPW at 90CRI
POWER CONSUMPTION	Selectable 14/19/27W
DISTRIBUTION	Narrow flood, Flood, Wide flood, Very wide flood

MECHANICAL & HOUSING

HOUSING	Aluminum Extrusion
LENS	Highly durable polycarbonate and high transmittance lens
FINISH	Black, White, Silver
POWER SUPPLY	Factory wired electronic LED driver
LED BOARD	COB

APPLICATION CONDITION

AMBIENT TEMPERATURE RANGE	-10 °C to 35°C
---------------------------	----------------

COMPATIBLE MOUNTING

MOUNTING	Juno Global Halo Lightolier
----------	--------------------------------------

WARRANTY

SYSTEM WARRANTY – 5 YEARS

ERALUX will warrant defective drivers, LEDs and boards for 5 years from the date of purchase. This warranty is valid only if the fixture is installed and used as per installation guides and specifications. If a defect is present, Eralux will send drivers and boards at no fee with a thorough replacement instructions along with instructions on the return of the defective parts back to ERALUX.

LUMEN MAINTENANCE – L70 at 50,000 hours

Rated for 70% initial lumen output at 50,000 hours of operation, operated at 25°C ambient temperature; per guidelines published by the Illuminating Engineering Society (IES)

eralux® CHANDRA GRANDE

TRACK LIGHTING

Track Fixture

DATE				
PROJECT NAME				
TYPE				
QTY				
ORDERING CODE	AE-TL-CDG-XXW	P		

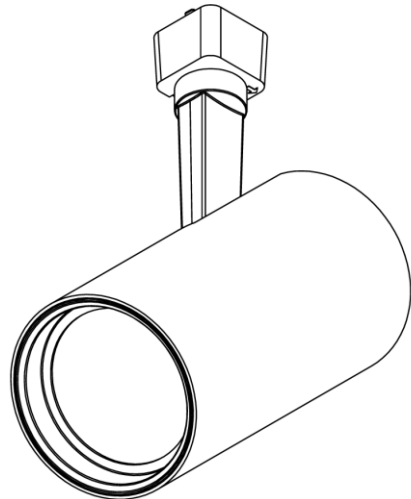
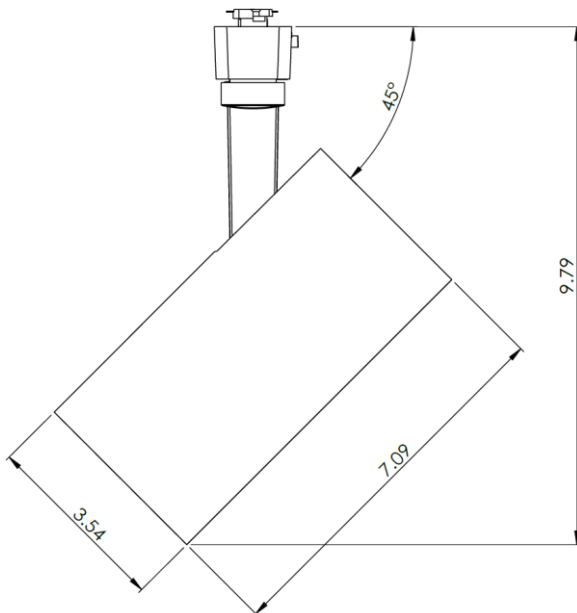
ORDERING GUIDE

EXAMPLE: AE-TL-CDG-XXWFLP30J1BK

FIXTURE FAMILY	WATTAGE	DISTRIBUTION	CRI	CCT	ADAPTER	FINISH
AE-TL-CDG	-XXW		P			
AE-TL-CDG ERALUX CHANDRA GRANDE track light 120V-277V	-XXW 14/19/27W: 1160/1575/2235lms @3000K	NF 19° Narrow flood distribution CBCP: 11324	P 90 CRI	27 2700K CCT	J1 Juno	BK Black powder coat finish
		FL 28° Flood light distribution CBCP: 6859		30 3000K CCT	G1 Global	WH White powder coat finish
		WF 37° Wide Flood distribution CBCP: 4371		35 3500K CCT	H1 Halo	SV Silver powder coat finish
		VWF 61° Very Wide Flood distribution CBCP: 1988		40 4000K CCT	L1 Lightolier	

PRODUCT DIMENSIONS (in inches)

AE-TL-CDG-XXWXXXPPXXXXXX
WEIGHT: 1,100 g



eralux® CHANDRA GRANDE

TRACK LIGHTING

Track Fixture



DATE				
PROJECT NAME				
TYPE				
QTY				
ORDERING CODE	AE-TL-CDG-XXW		P	

DIMMER COMPATIBILITY LIST

TRIAC/ELV Dimmer @120VAC
Leviton 6674
Leviton DVCL-153P
Lutron DV-103P
Lutron S-600P
Leviton PR106
Leviton IP106
Lutron NTLV-600
Leviton 6684

ACCESSORIES

Ordered separately, field installed

FIXTURE FAMILY	ACCESSORY	PICTURE
AE-TL-CDG-		
AE-TL-CDG-	HX Hexcell Louver	
	SNT-BK Snoot Black	
	SNT-WH Snoot White	

eralux® CHANDRA GRANDE

TRACK LIGHTING

Track Fixture

DATE				
PROJECT NAME				
TYPE				
QTY				
ORDERING CODE	AE-TL-CDG-XXW	P		

LUMEN ESTIMATE

Lumen output varies based on CCT and CRI. An estimate of lumen output of the various CCT/CRI combinations, use correction factors as per table below:

LUMEN ESTIMATE ADJUSTMENT FACTORS				
CCT	2700K	3000K	3500K	4000K
90CRI	0.8	.86	.93	0.93

PHOTOMETRIC DATA

AE-TL-CDG-XXWNFP30XXXX

90 CRI

19° Narrow Flood

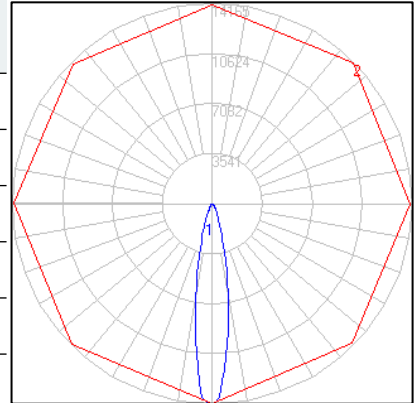
28 Watts

3000K CCT

ZONAL LUMEN SUMMARY

ZONE	LUMENS	% OF FIXTURE
0-20°	1813.17	71.80
0-30°	2193.74	86.90
0-40°	2361.25	93.50
0-60°	2456.25	97.30
0-80°	2477.26	98.10
0-90°	2483.56	98.40

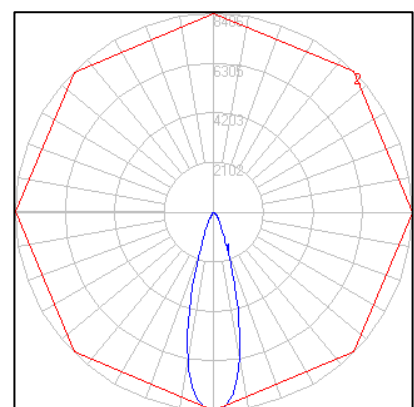
POLAR LUMINOUS INTENSITY GRAPH



ZONAL LUMEN SUMMARY

ZONE	LUMENS	% OF FIXTURE
0-20°	1711.57	69.60
0-30°	2111.55	85.90
0-40°	2288.82	93.10
0-60°	2391.25	97.30
0-80°	2411.72	98.10
0-90°	2417.9	98.40

POLAR LUMINOUS INTENSITY GRAPH



eralux® CHANDRA GRANDE

TRACK LIGHTING

Track Fixture

DATE			
PROJECT NAME			
TYPE			
QTY			
ORDERING CODE	AE-TL-CDG-XXW	P	

PHOTOMETRIC DATA (CONTINUE)

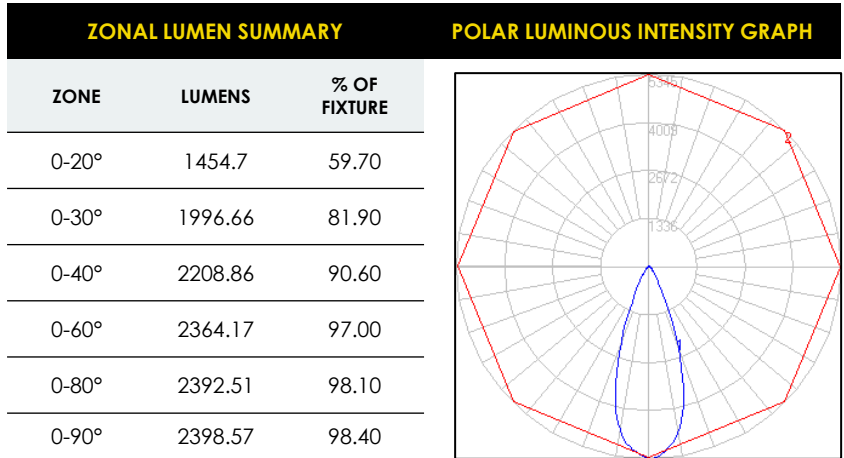
AE-TL-CDG-XXWWFP30XXXX

90 CRI

37° Wide Flood

28 Watts

3000K CCT



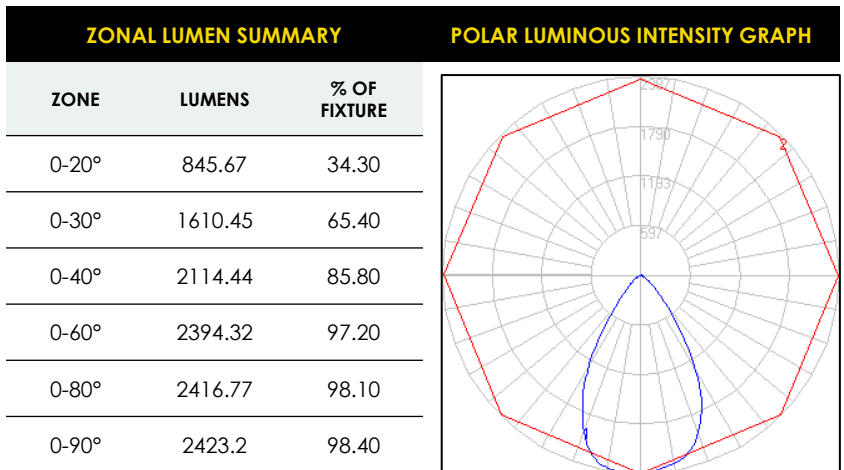
AE-TL-CDG-XXWVFP30XXXX

90 CRI

61° Very Wide Flood

28 Watts

3000K CCT



eralux® CHANDRA GRANDE

TRACK LIGHTING

Track Fixture

DATE					
PROJECT NAME					
TYPE					
QTY					
ORDERING CODE	AE-TL-CDG-XXW		P		

OVERVIEW



MULTIPLE MOUNTING ADAPTERS

Choose from any of the popular track systems such as Juno, Halo, Lightolier, or Global.

PREMIUM DESIGN

Aluminum die-cast materials selected for efficient thermal heat dissipation, enhanced structural rigidity maximizing LED life and driver function.

MULTIPLE OPTIONS

Customize your track head by selecting from a variety of power switchable, beam angle, CCT options allowing you to have a unique fixture that suits your project.

PAINT FINISH

Factory standard in black, white, and silver Contact for custom paint finishes to enhance your fixture to suit your project space.

EFFICIENT DESIGN

Integrated components allow for small stem and clean aesthetic appearance.