

CHANDRA MINI

TRACK LIGHTING

Track Fixture

With the CHANDRA Max and CHANDRA Series, you can create a family look in your retail environment with the new CHANDRA Mini series. It comes available in a variety of beam patterns and CCT options. With a 90CRI for all its CCT, the CHANDRA Mini will enhance your retail environment to another level.



eralux®



DATE	
PROJECT NAME	
TYPE	
QTY	
ORDERING CODE	AE-TL-CDM-12

OPERATING & ELECTRICAL

INPUT VOLTAGE	120 V
POWER FACTOR	>0.9
DIMMING	Triac dimming
TOTAL HARMONIC DISTORTION (THD)	<20%

PERFORMANCE

LUMENS PER WATT	79-91 LPW at 90CRI
POWER CONSUMPTION	9W,13.4W
DISTRIBUTION	Narrow flood Flood Wide flood

MECHANICAL & HOUSING

HOUSING	Aluminum die cast
LENS	Highly durable polycarbonate and high transmittance lens
FINISH	Black, White, Silver
POWER SUPPLY	Factory wired electronic LED driver
LED BOARD	COB

APPLICATION CONDITION

AMBIENT TEMPERATURE RANGE	-10 °C to 35°C
---------------------------	----------------

COMPATIBLE MOUNTING

MOUNTING

Juno
Global
Halo
Lightolier

WARRANTY

SYSTEM WARRANTY – 5 YEARS

Eralux will warrant defective drivers, LEDs and boards for 5 years from the date of purchase. This warranty is valid only if the fixture is installed and used as per installation guides and specifications. If a defect is present, Eralux will send drivers and boards at no fee with a thorough replacement instructions along with instructions on the return of the defective parts back to Eralux.

LUMEN MAINTENANCE – L70 at 50,000 hours

Rated for 70% initial lumen output at 50,000 hours of operation, operated at 25°C ambient temperature; per guidelines published by the Illuminating Engineering Society (IES)

eralux®

CHANDRA MINI

TRACK LIGHTING

Track Fixture

DATE	
PROJECT NAME	
TYPE	
QTY	
ORDERING CODE	AE-TL-CDM-12
	P

ORDERING GUIDE

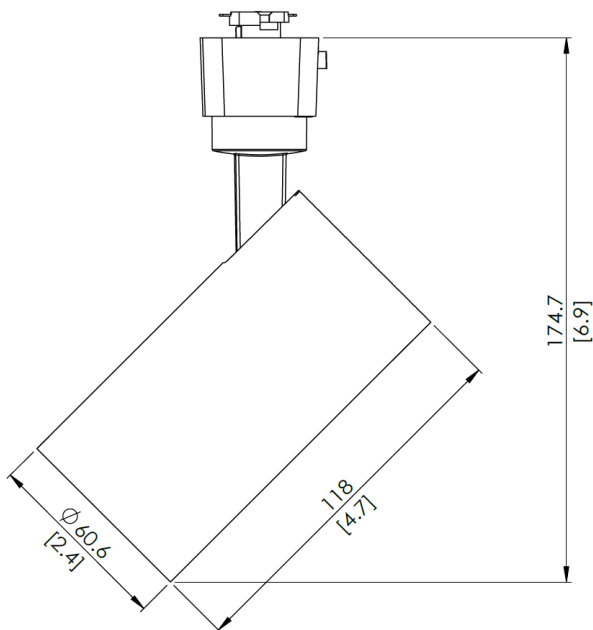
EXAMPLE: AE-TL-CDM-12LNFP30J1BK

FIXTURE FAMILY	WATTAGE	DISTRIBUTION	CRI	CCT	ADAPTER	FINISH	
AE-TL-CDM-12			P				
AE-TL-CDM-12 ERALUX CHANDRA MINI track light 120V	L 9 watts: 765 lumens at 90CRI 3000K	NF Narrow Flood light distribution 25° CBCP: 3300 @ 90 CRI 4800 @ 90 CRI	P Premium 90 CRI	27 2700K CCT	J1 Juno mounting system	BK Black powder coat finish	
		FL Flood light distribution 30° CBCP: 2200 @ 90 CRI 3160 @ 90 CRI		30 3000K CCT	G1 Global mounting system		WH White powder coat finish
	H 13.4 watts: 1,059 lumens at 90CRI 3000K				WF Wide Flood light distribution 60° CBCP: 860 @ 90 CRI 1190 @ 90 CRI	H1 Halo mounting system	SV Silver powder coat finish
						35 3500K CCT	
	40 4000K CCT						

PRODUCT DIMENSIONS

AE-TL-CD12MXXXXXXXXXXXX

Weight: 0.385 kg



CHANDRA MINI

TRACK LIGHTING

Track Fixture

DATE	
PROJECT NAME	
TYPE	
QTY	
ORDERING CODE	AE-TL-CDM-12
	P

LUMEN ESTIMATE

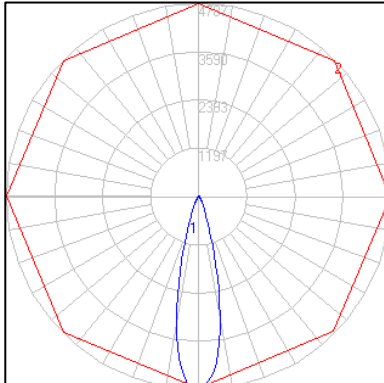
Lumen output varies based on CCT and CRI. An estimate of lumen output of the various CCT/CRI combinations, use correction factors as per table below:

LUMEN ESTIMATE ADJUSTMENT FACTORS				
CCT	2700	3000K	3500K	4000K
PREMIUM (90CRI)	0.8	0.86	0.93	0.93

PHOTOMETRIC DATA

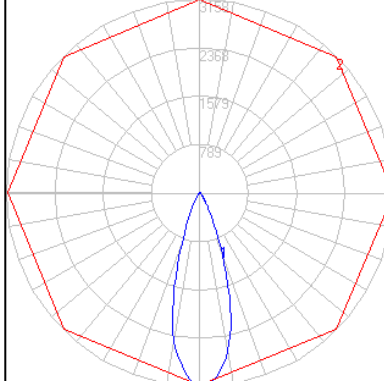
AE-TL-CDM-12HNFP30X1XX

Narrow Flood 25°

ZONAL LUMEN SUMMARY			POLAR LUMINOUS INTENSITY GRAPH
ZONE	LUMENS	% OF FIXTURE	
0-20°	815.90	72.40	
0-30°	975.82	86.50	
0-40°	1046.06	92.80	
0-60°	1089.25	96.60	
0-80°	1099.14	97.50	
0-90°	1103.09	97.80	

AE-TL-CDM-12HFLP30X1XX

Flood 30°

ZONAL LUMEN SUMMARY			POLAR LUMINOUS INTENSITY GRAPH
ZONE	LUMENS	% OF FIXTURE	
0-20°	739.27	66.60	
0-30°	952.27	85.80	
0-40°	1027.78	92.60	
0-60°	1073.04	96.60	
0-80°	1082.91	97.50	
0-90°	1086.61	97.80	

CHANDRA MINI

TRACK LIGHTING

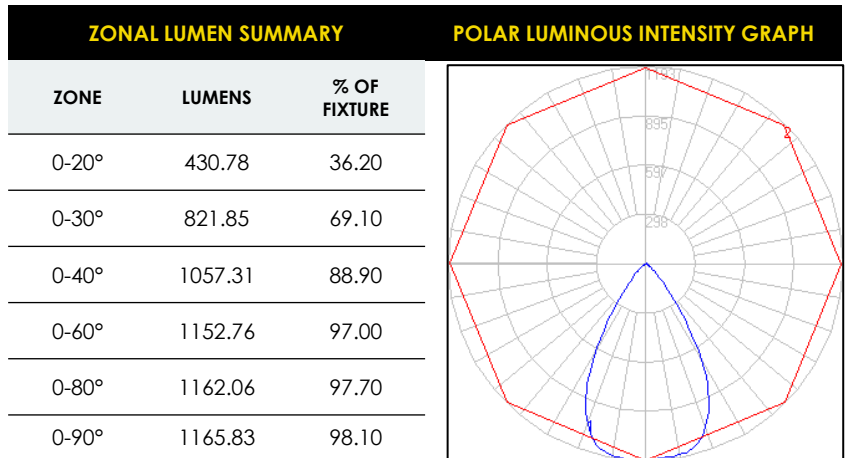
Track Fixture

DATE	
PROJECT NAME	
TYPE	
QTY	
ORDERING CODE	AE-TL-CDM-12
	P

PHOTOMETRIC DATA (CONTINUE)

AE-TL-CDM-12HWFP30X1XX

Wide Flood 60°



DIMMER COMPATIBILITY LIST (10W & 13.5W)

TRIAC/ELV Dimmer @120VAC
Lutron SLV-600X
Lutron S2-LX
Lutron GL-600H
Lutron NFTU-5A
Lutron DVLV-600P
Leviton 6602-X
Leviton 6681-X
Leviton 6683-X
Leviton 6684-X
Leviton 700-X

TRIAC/ELV Dimmer @120VAC
Leviton 705-X
Leviton 6633
Leviton 6674
Leviton IPI06-1LZ
Cooper 9530XXX
Lightolier MP600X
Advance SR150LED120

CHANDRA MINI

TRACK LIGHTING

Track Fixture

DATE	
PROJECT NAME	
TYPE	
QTY	
ORDERING CODE	AE-TL-CDM-12
	P

OVERVIEW



MULTIPLE MOUNTING ADAPTERS

Choose from any of the popular track systems such as Juno, Halo, Lightolier, or Global.

PREMIUM DESIGN

Aluminum die-cast materials selected for efficient thermal heat dissipation, enhanced structural rigidity maximizing LED life and driver function.

MULTIPLE OPTIONS

Customize your track head by selecting from a variety of beam angle and CCT options allowing you to have a unique fixture that suits your project.

PAINT FINISH

Factory standard in black, white, and silver. Contact for custom paint finishes to enhance your fixture to suit your project space.

EFFICIENT DESIGN

Integrated components allow for small stem and clean aesthetic appearance.

