

CHANDRA MINI

TRACK LIGHTING

Track Fixture

With the CHANDRA Max and CHANDRA Series, you can create a family look in your retail environment with the new CHANDRA Mini series. It comes available in a variety of beam patterns and CCT options. With a 90CRI for all its CCT, the CHANDRA Mini will enhance your retail environment to another level.



eralux®



DATE	
PROJECT NAME	
TYPE	
QTY	
ORDERING CODE	AE-TL-CDM-12
	P

OPERATING & ELECTRICAL

INPUT VOLTAGE	120 V
POWER FACTOR	>0.9
DIMMING	Triac dimming
TOTAL HARMONIC DISTORTION (THD)	<20%

PERFORMANCE

LUMENS PER WATT	79-91 LPW at 90CRI
POWER CONSUMPTION	9W,13.4W
DISTRIBUTION	Narrow flood Flood Wide flood

MECHANICAL & HOUSING

HOUSING	Aluminum die cast
LENS	Highly durable polycarbonate and high transmittance lens
FINISH	Black, White, Silver
POWER SUPPLY	Factory wired electronic LED driver
LED BOARD	COB

APPLICATION CONDITION

AMBIENT TEMPERATURE RANGE	-10 °C to 35°C
---------------------------	----------------

COMPATIBLE MOUNTING

MOUNTING	Juno Global Halo Lightolier
----------	--------------------------------------

WARRANTY

SYSTEM WARRANTY – 5 YEARS

Eralux will warrant defective drivers, LEDs and boards for 5 years from the date of purchase. This warranty is valid only if the fixture is installed and used as per installation guides and specifications. If a defect is present, Eralux will send drivers and boards at no fee with a thorough replacement instructions along with instructions on the return of the defective parts back to Eralux.

LUMEN MAINTENANCE – L70 at 50,000 hours

Rated for 70% initial lumen output at 50,000 hours of operation, operated at 25°C ambient temperature; per guidelines published by the Illuminating Engineering Society (IES)

eralux® CHANDRA MINI

TRACK LIGHTING

Track Fixture

DATE	
PROJECT NAME	
TYPE	
QTY	
ORDERING CODE	AE-TL-CDM-12

ORDERING GUIDE

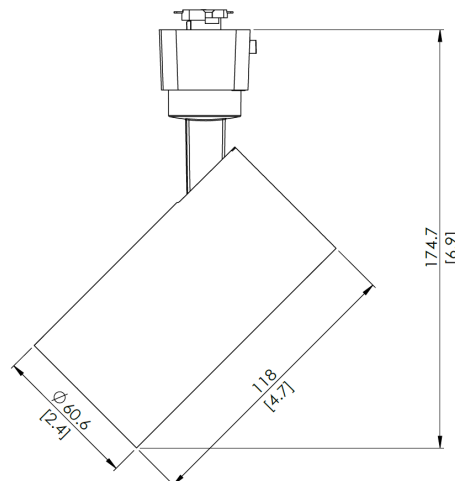
EXAMPLE: AE-TL-CDM-12LNFP30BZJ1BK

FIXTURE FAMILY	WATTAGE	DISTRIBUTION	CRI	CCT	TRIM FINISH	ADAPTER	FINISH
AE-TL-CDM-12			P				
AE-TL-CDM-12 ERALUX CHANDRA MINI track light 120V	L 9 watts: 880 lumens at 90CRI 3000K	SP Spotlight distribution 21° 4239 @ 9W 6226 @ 13.4 W	P Premium 90 CRI	27 2700K CCT	[BLANK] Black	J1 Juno mounting system	BK Black powder coat finish
		NF Narrow Flood light distribution 24° CBCP: 3175 @ 9W 4499 @ 13.4 W		30 3000K CCT			
		FL Flood light distribution 29° CBCP: 2437 @ 9W 3424 @ 13.4W		35 3500K CCT	H1 Halo mounting system	SV Silver powder coat finish	
	H 13.4 watts: 1,220 lumens at 90CRI 3000K	WF Wide Flood light distribution 55° CBCP: 943 @ 9W 1328 @ 13.4W		40 4000K CCT			GD Gold

PRODUCT DIMENSIONS

AE-TL-CD12MXXXXXXXXXXXX

Weight: 0.385 kg



CHANDRA MINI

TRACK LIGHTING

Track Fixture

DATE	
PROJECT NAME	
TYPE	
QTY	
ORDERING CODE	AE-TL-CDM-12 P

LUMEN ESTIMATE

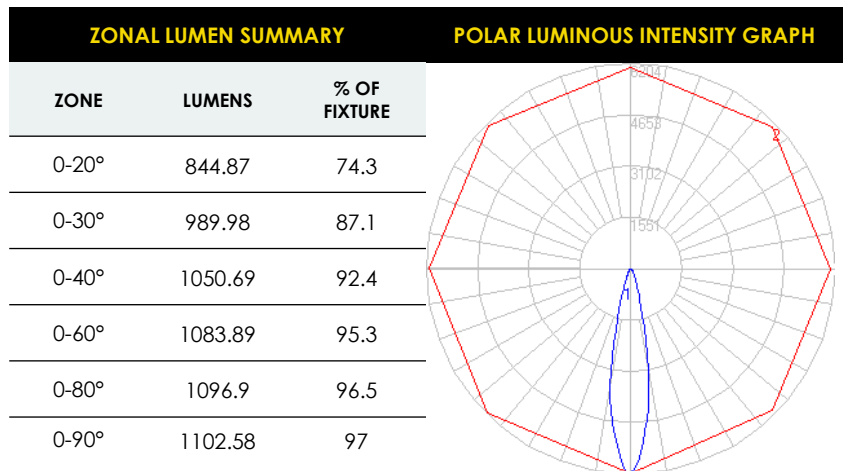
Lumen output varies based on CCT and CRI. An estimate of lumen output of the various CCT/CRI combinations, use correction factors as per table below:

LUMEN ESTIMATE ADJUSTMENT FACTORS				
CCT	2700	3000K	3500K	4000K
PREMIUM (90CRI)	0.8	0.86	0.93	0.93

PHOTOMETRIC DATA

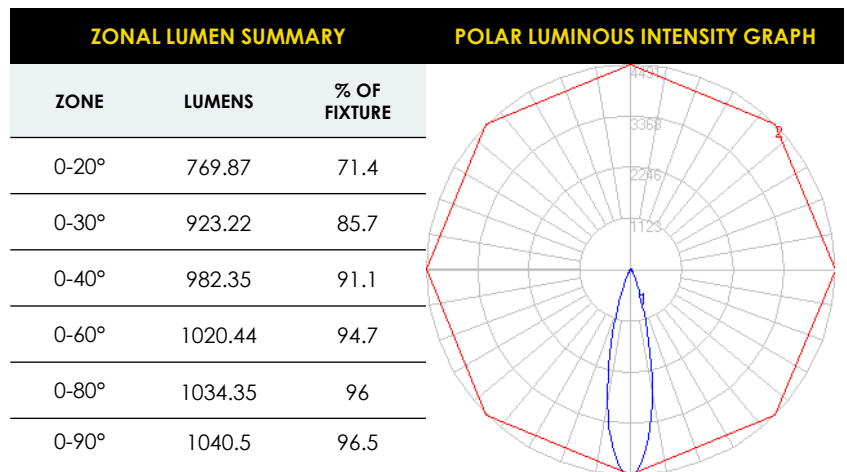
AE-TL-CDM-12HSPP30X1XX

Spot 21°



AE-TL-CDM-12HNFP30X1XX

Narrow Flood 25°



CHANDRA MINI

TRACK LIGHTING

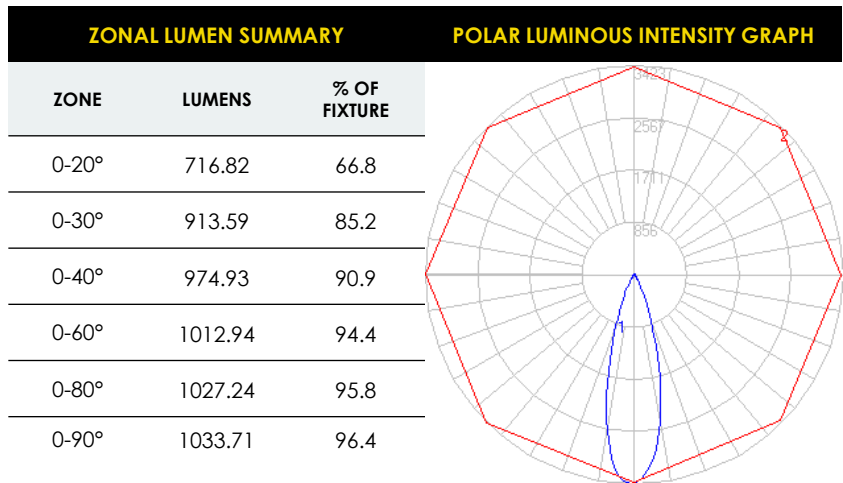
Track Fixture

DATE	
PROJECT NAME	
TYPE	
QTY	
ORDERING CODE	AE-TL-CDM-12
	P

PHOTOMETRIC DATA (CONTINUE)

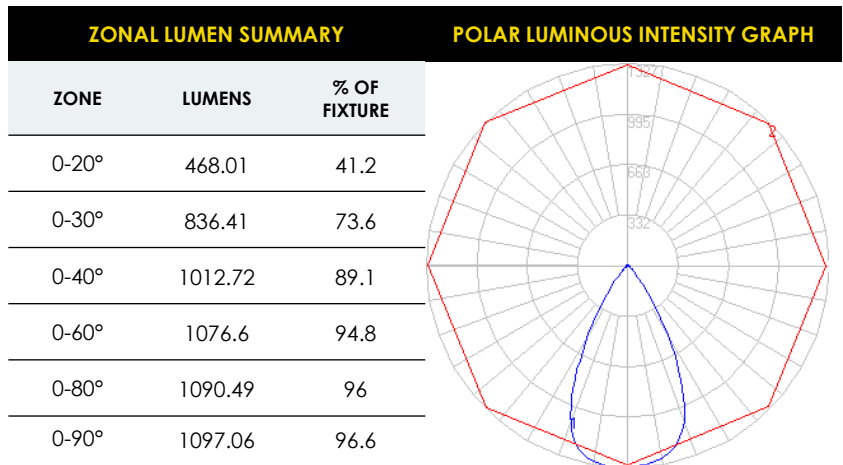
AE-TL-CDM-12HFLP30X1XX

Flood 29°



AE-TL-CDM-12HWFP30X1XX

Wide Flood 55°



CHANDRA MINI

TRACK LIGHTING

Track Fixture

DATE	
PROJECT NAME	
TYPE	
QTY	
ORDERING CODE	AE-TL-CDM-12



DIMMER COMPATIBILITY LIST (10 & 13.5W)

TRIAC/ELV Dimmer @120VAC
Lutron SLV-600X
Lutron S2-LX
Lutron GL-600H
Lutron NFTU-5A
Lutron DVLV-600P
Leviton 6602-X
Leviton 6681-X
Leviton 6683-X

TRIAC/ELV Dimmer @120VAC
Leviton 6684-X
Leviton 700-X
Leviton 705-X
Leviton 6633
Leviton 6674
Leviton IPI06-1LZ
Cooper 9530XXX
Lightolier MP600X
Advance SR150LED120

ACCESSORIES

Ordered separately, field installed

FIXTURE FAMILY	ACCESSORY	PICTURE
AE-TL-CDM-		
AE-TL-CDM-	HX Hexcell Louver	
	SNT-BK Snoot Black	
	SNT-WH Snoot White	

DATE	
PROJECT NAME	
TYPE	
QTY	
ORDERING CODE	AE-TL-CDM-12

OVERVIEW



MULTIPLE MOUNTING ADAPTERS

Choose from any of the popular track systems such as Juno, Halo, Lightolier, or Global.

PREMIUM DESIGN

Aluminum die-cast materials selected for efficient thermal heat dissipation, enhanced structural rigidity maximizing LED life and driver function.

MULTIPLE OPTIONS

Customize your track head by selecting from a variety of beam angle and CCT options allowing you to have a unique fixture that suits your project.

PAINT FINISH

Factory standard in black, white, and silver. Contact for custom paint finishes to enhance your fixture to suit your project space.

EFFICIENT DESIGN

Integrated components allow for small stem and clean aesthetic appearance.

