

LUX BOLLARDS

OUTDOOR LED LIGHT

Architectural Bollards

The LUX Bollard Series offers an elegant, and luxury lighting solution for outdoor spaces. Made from durable materials, these fixtures are built to withstand the harshest weather conditions. Their advanced optical systems deliver effective illumination with minimal glare. Distinguished by their elegant and robust style, this bollard series provides an efficient, high-quality lighting choice.

Applications: Garden | Industrial park | Walkway | Pathway


	DATE	QTY	ACC. QTY	TYPE
PROJECT				
PN				
ACCESSORY PN				
NOTES				

DYNAMIC MENU

Order Information	Page 2
Dimensions	Page 4
Photometric Data	Page 7

[Install Instruction link](#)

SPECIFICATIONS

Input Voltage	120-240V 120-277V
Power Factor	>0.9
Total Harmonic Distortion	<20%
CRI	80 CRI
CCT	30K 40K 50K
Efficacy	~150 lm/W
Power	5 10 15 20 32 35W
Ambient Temperature Range	-25°C to 50°C
Mounting Options	Concrete anchor mount
Fixture Finish	Black 
Protection	IP65; water and dust resistance Marine corrosion resistant finish
Distribution	360° 180° (Leonardo)

Donatello



Leonardo



Michelangelo



Raphael



PRODUCT FEATURES



PRODUCT CERTIFICATIONS



SYSTEM WARRANTY – 5 YEARS

Eralux will warrant defective drivers, LEDs and boards for 5 years from the date of purchase. This warranty is valid only if the fixture is installed and used as per installation guides and specifications. If a defect is present, Eralux will send drivers and boards at no fee with a thorough replacement instructions along with instructions on the return of the defective parts back to Eralux.

LUMEN MAINTENANCE – L70 at 50,000 hours

Rated for 70% initial lumen output at 50,000 hours of operation, operated at 25°C ambient temperature; per guidelines published by the Illuminating Engineering Society (IES).

OUTDOOR LED LIGHT

Architectural Bollards



ORDERING GUIDE - DONATELLO

AE-OD-DN			80		-M	
AE-OD-DN ERALUX Outdoor Products Donatello Bollard Fixture	25-C10-32-6 120-240V 10W 400 lm 32" height Ø 6"	-3 3000K -4 4000K -5 5000K	-80 80 CRI	-B Graphite black -Z Mineral bronze -W ² Nebula white -S ² Aluminum (RAL9006)	-M Thermoset Aluminum cast housing	[BLANK] -GC GFCI outlet option
	26-C20-42-8 ¹ 120-277V 20W 1000 lm 42" height Ø 8"					
	26-C35-42-8 120-277V 35W 1750 lm 42" height Ø 8"					

Fixture Family	Power & Size	CCT	CRI	Finish	Housing	Option
----------------	--------------	-----	-----	--------	---------	--------

NOTES

- 1-10V Dimming for 20W option only
- Contact for lead times and availability



ORDERING GUIDE - LEONARDO

AE-OD-LD			80		-M	
AE-OD-LD ERALUX Outdoor Products Leonardo Bollard Fixture	35-C5-32-6 120-240V 5W 168 lm 32" height Ø 6"	-3 3000K -4 4000K -5 5000K	-80 80 CRI	-B Graphite black -Z Mineral bronze -W ¹ Nebula white -S ¹ Aluminum (RAL9006)	-M Thermoset Aluminum cast housing	[BLANK] -GC GFCI outlet option
	36-C15-42-8 120-277V 15W 402 lm 42" height Ø 8"					

Fixture Family	Power & Size	CCT	CRI	Finish	Housing	Option
----------------	--------------	-----	-----	--------	---------	--------

NOTES

- Contact for lead times and availability

OUTDOOR LED LIGHT

Architectural Bollards



ORDERING GUIDE - MICHELANGELO

AE-OD-ML			80		-M	
AE-OD-ML ERALUX Outdoor Products Michelangelo Bollard Fixture	27-C10-33-6 120-240V 10W 400 lm 33" height Ø 6"	-3 3000K -4 4000K -5 5000K	-80 80 CRI	-B Graphite black -Z Mineral bronze -W ¹ Nebula white -S ¹ Aluminum (RAL9006)	-M Thermoset Aluminum cast housing	[BLANK] -GC GFCI outlet option
	28-C20-44-8 ¹ 120-277V 20W 1225 lm 44" height Ø 8"					
	28-C35-44-8 120-277V 35W 1960 lm 44" height Ø 8"					

Fixture Family	Power & Size	CCT	CRI	Finish	Housing	Option
----------------	--------------	-----	-----	--------	---------	--------

NOTES

- Contact for lead times and availability



ORDERING GUIDE - RAPHAEL

AE-OD-RL			80		-M	
AE-OD-RL ERALUX Outdoor Products Raphael Bollard Fixture	23-C10-32-6 120-240V 10W 267 lm 32" height Ø 6"	-3 3000K -4 4000K -5 5000K	-80 80 CRI	-B Graphite black -Z Mineral bronze -W ² Nebula white -S ² Aluminum (RAL9006)	-M Thermoset Aluminum cast housing	[BLANK] -GC GFCI outlet option
	24-C20-42-8 ¹ 120-277V 20W 796 lm 42" height Ø 8"					
	24-C35-42-8 120-277V 35W 1273 lm 42" height Ø 8"					

Fixture Family	Power & Size	CCT	CRI	Finish	Housing	Option
----------------	--------------	-----	-----	--------	---------	--------

NOTES

- 1-10V Dimming for 20W option only
- Contact for lead times and availability

DIMENSIONS - FIXTURE

LUX BOLLARDS							
DONATELLO				LEONARDO			
Power	A	B	C	Power	A	B	C
10W	32 in	5.5 in	7.87 in	5W	32 in	5.5 in	7.87 in
20W	42 in	7.87 in	7.87 in	15W	42 in	7.87 in	7.87 in
35W	42 in	7.87 in	7.87 in				

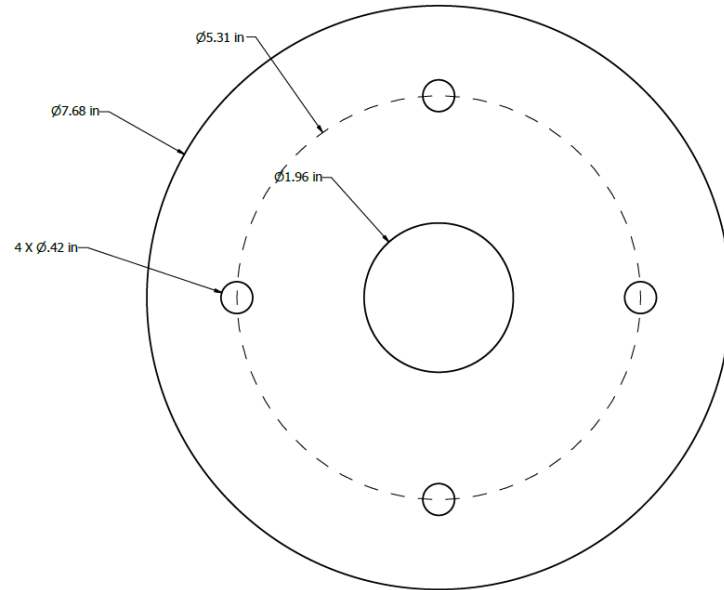
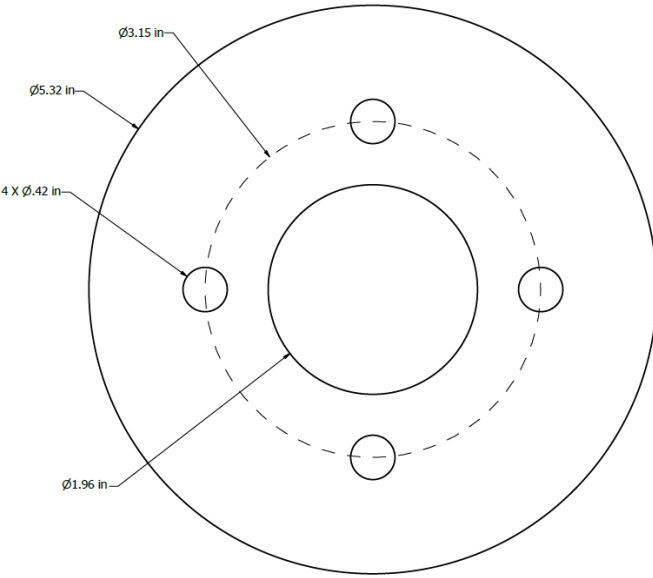
MICHELANGELO				RAPHAEL			
Power	A	B	C	Power	A	B	C
10W	33 in	5.5 in	7.87 in	10W	33 in	5.5 in	7.87 in
20W	42 in	7.87 in	7.87 in	20W	42 in	7.87 in	7.87 in
35W	42 in	7.87 in	7.87 in	35W	42 in	7.87 in	7.87 in

DIMENSIONS – ANCHOR BOLTS



6 INCH BASE

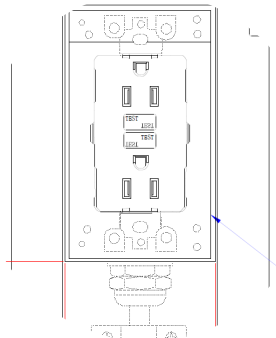
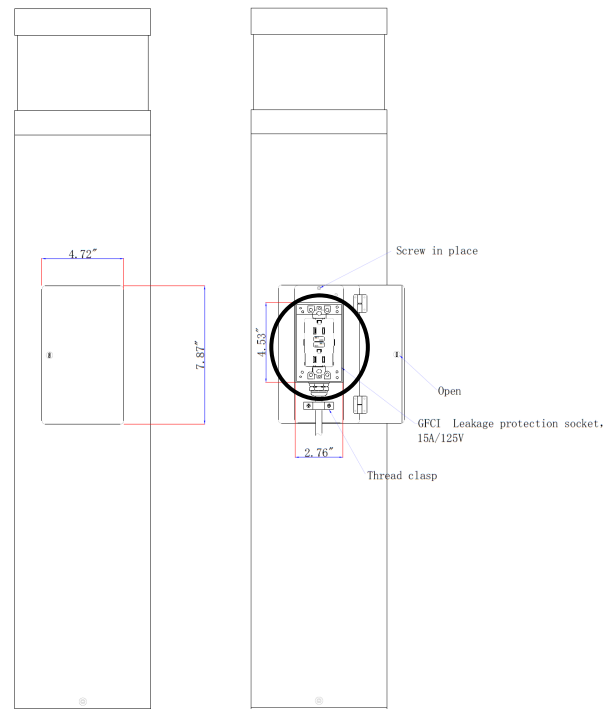
8 INCH BASE



GFCI RECEPTACLE OPTION

Factory installed GFCI outlet option, output voltage 120V with safety flap.

Exterior cover easy locking system sealed from water intrusion.



B-U-G RATING

LEONARDO	
POWER	BUG RATING
5W	B0-U1-G1
15W	B0-U1-G1

DONATELLO	
POWER	BUG RATING
10W	B1-U1-G1
20W	B1-U1-G1
35W	B1-U1-G1

MICHELANGELO	
POWER	BUG RATING
10W	B1-U3-G1
20W	B1-U3-G1
35W	B1-U3-G1

RAPHAEL	
POWER	BUG RATING
10W	B0-U1-G0
20W	B0-U1-G0
35W	B0-U1-G0

LUMEN ESTIMATE

Lumen output varies based on CCT and CRI. An estimate of lumen output of the various CCT/CRI combinations, use correction factors as per table below:

LUMEN ESTIMATE ADJUSTMENT FACTORS

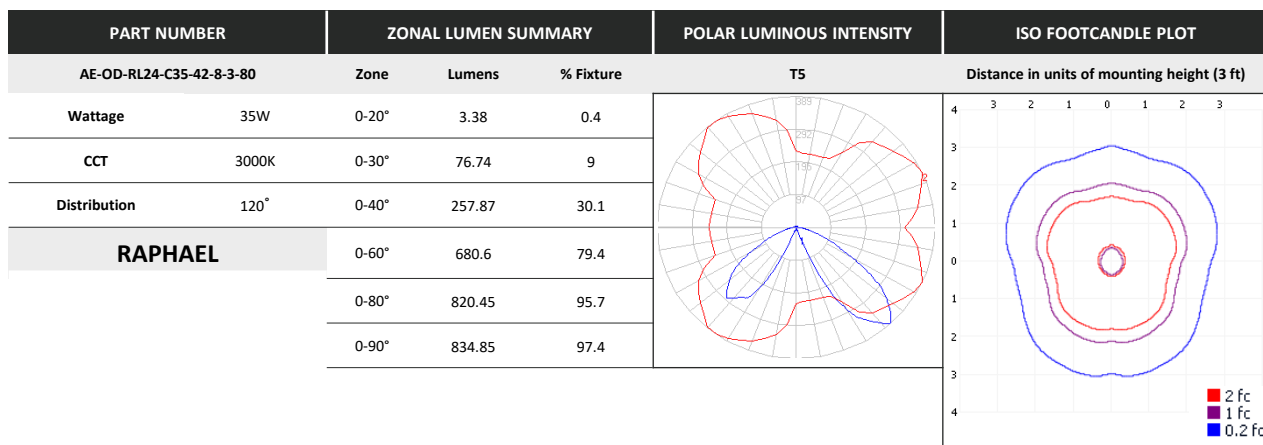
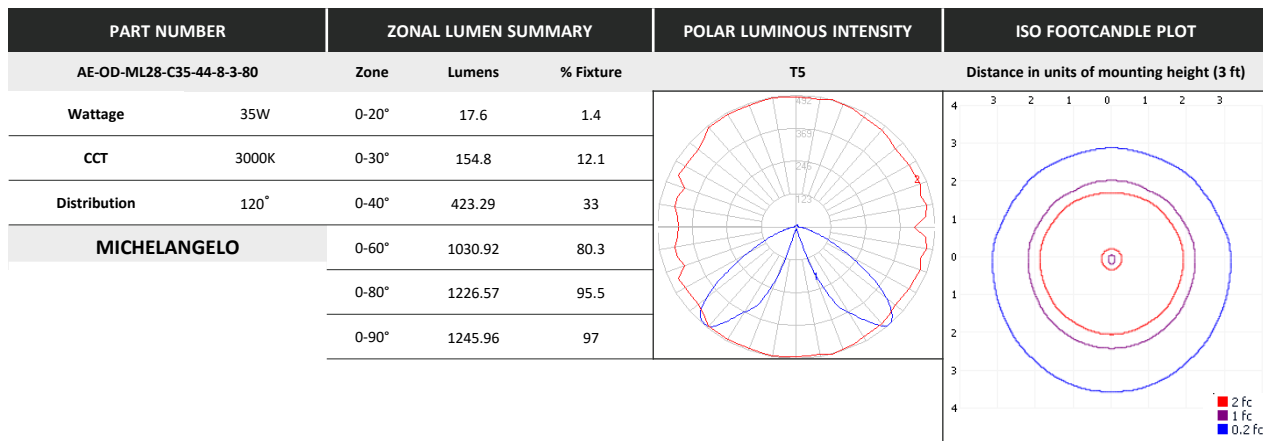
CCT	3000K	3500K	4000K	5000K
PREMIUM (90CRI)	0.91	0.94	0.97	1

PHOTOMETRIC DATA

PART NUMBER		ZONAL LUMEN SUMMARY			POLAR LUMINOUS INTENSITY	ISO FOOTCANDLE PLOT
AE-OD-DN26-C35-42-8-3-80		Zone	Lumens	% Fixture	T5	Distance in units of mounting height (3 ft)
Wattage	35W	0-20°	4.87	0.4		
CCT	3000K	0-30°	18.69	1.4		
Distribution	120°	0-40°	58.31	4.5		
DONATELLO		0-60°	263.17	20.3		
		0-80°	1043.17	80.5		
		0-90°	1234.26	95.3		

PART NUMBER		ZONAL LUMEN SUMMARY			POLAR LUMINOUS INTENSITY	ISO FOOTCANDLE PLOT
AE-OD-LD36-C15-42-8-3-80		Zone	Lumens	% Fixture	T5	Distance in units of mounting height (3 ft)
Wattage	15W	0-20°	1.26	0.2		
CCT	3000K	0-30°	6.49	1.2		
Distribution	120°	0-40°	22.16	4.1		
LEONARDO		0-60°	132.53	24.8		
		0-80°	464.95	87		
		0-90°	534.37	100		

PHOTOMETRIC DATA



OVERVIEW



Innovative Design

- Aluminum die cast housing.
- Highly robust polycarbonate and high transmittance lens.



Multiple Options

- 3 different powers options.
- 3 different CCTs available.
- 4 different bollard heads.
- 4 different color finish.



Donatello



Leonardo



Michelangelo



Raphael



Tests And Certifications



Protection



- Protected against dust ingress.
- Protected against water jets
- Corrosion resistant finish



Mountings Available

- Concrete anchor mount



Option

- GFCI receptacle