

ELARA



LED TRACK LIGHT

Linear Snap-In Track Head | Jupiter Series

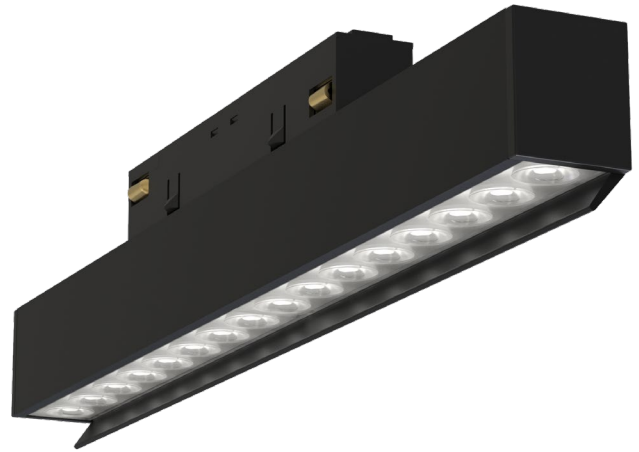
The Elara is a linear track head compatible with the Jupiter snap-in track system, available in multiple CCTs and finishes to suit a variety of applications. Its sleek, integrated shield directs light into a wall wash distribution. Its simple snap-in design allows for quick, straightforward installation. Once installed, the Elara sits flush with the track for a sleek, refined profile.

Applications: Art Galleries | Show Rooms | Retail Stores | Hospitality

	DATE	QTY	ACC. QTY	TYPE
PROJECT				
PN				
ACCESSORY PN				
NOTES				

DYNAMIC MENU	
Order Information	Page 2
Dimensions	Page 3
Photometric Data	Page 3

[Install Instruction Link](#)



SPECIFICATIONS

Input Voltage	DC 48V
Power Factor	>0.9
Total Harmonic Distortion	<20%
Dimming	0-10V dimming possible with external driver (ordered separately)
CRI	90 CRI
CCT	<div style="display: flex; gap: 10px;"> <div style="border: 1px solid black; border-radius: 50%; width: 20px; height: 20px; background-color: #fff9c4; display: flex; align-items: center; justify-content: center;">30K</div> <div style="border: 1px solid black; border-radius: 50%; width: 20px; height: 20px; background-color: #bbdefb; display: flex; align-items: center; justify-content: center;">40K</div> </div>
Efficacy	88 LPW
Power	12W
Mounting Adapter	Jupiter snap-in track
Fixture Finish	Black White
Housing Material	Die-cast aluminum
Distribution	Wall wash

PRODUCT CERTIFICATIONS



SYSTEM WARRANTY – 3 YEARS

Eralux will warrant defective drivers, LEDs and boards for 3 years from the date of purchase. This warranty is valid only if the fixture is installed and used as per installation guides and specifications. If a defect is present, Eralux will send drivers and boards at no fee with a thorough replacement instructions along with instructions on the return of the defective parts back to Eralux.

LUMEN MAINTENANCE – L70 at 55,000 hours

Rated for 70% initial lumen output at 55,000 hours of operation, operated at 25°C ambient temperature; per guidelines published by the Illuminating Engineering Society (IES).

LED TRACK LIGHT

Linear Snap-In Track Head | 9.65" Length



ORDERING GUIDE

JP-EL	-12W	-WW		
JP-EL ERALUX Elara Linear Snap-In Track Head Jupiter Series	-12W 12W 1060 lm	-WW Wall Wash	30 3000K 40 4000K	-BK Black -WH White

Fixture Family	Power	Distribution	CCT	Finish
-----------------------	--------------	---------------------	------------	---------------





NOTES

- The Elara track head does not come with an integral driver. The ELG-75-48AB driver must be ordered separately. See Jupiter track spec sheets for more information.



JUPITER SNAP-IN TRACK SYSTEM

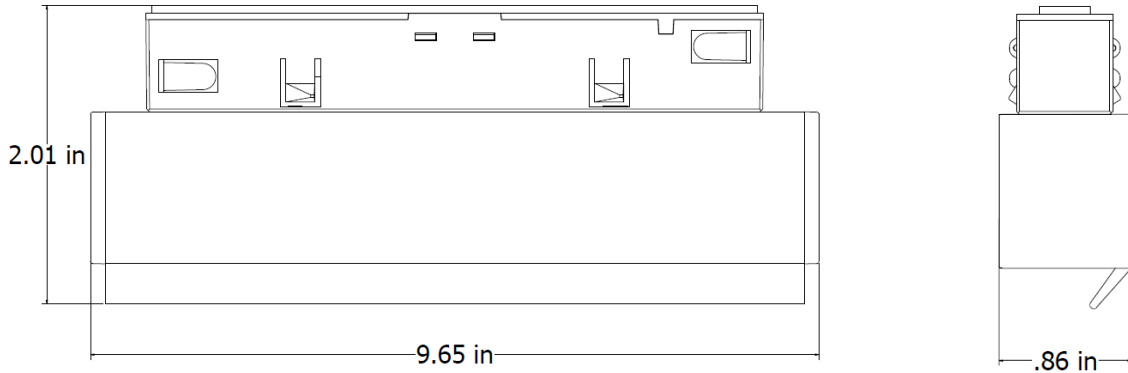
Available in 4ft or 8ft lengths.

MODEL	DEPTH	MOUNTING	PICTURE
<u>ST6</u>	1"	Surface or Suspended	
<u>ST2</u>	2"		
<u>ST8</u>	1"	Recessed	
<u>ST18</u>	2"		

LED TRACK LIGHT

Linear Track Head | 9.65" Length

DIMENSIONS



LUMEN ESTIMATE

Lumen output varies based on CCT and CRI. use correction factors as per table below:

LUMEN ESTIMATE ADJUSTMENT FACTORS		
CCT	3000K	4000K
PREMIUM (90CRI)	1	1.06

PHOTOMETRIC DATA

PART NUMBER		ZONAL LUMEN SUMMARY			POLAR LUMINOUS INTENSITY	CONE DISTRIBUTION			
JP-EL-12W-WW30-XX		Zone	Lumens	% Fixture	Direct Light	Center Beam Fc		Beam Width	
Wattage	12W	0-20°	536.95	50.7		2.5ft	341 fc	1.3 ft	1.4 ft
CCT	3000K	0-30°	782.30	73.9		5.0ft	85.3 fc	2.5 ft	2.9 ft
Distribution	Wall wash	0-40°	904.48	85.4		7.5ft	37.9 fc	3.8 ft	4.3 ft
Lumens	1059	0-60°	1012.91	95.7		10.0ft	21.3 fc	5.1 ft	5.7 ft
		0-80°	1048.24	99.0		12.5ft	13.7 fc	6.3 ft	7.1 ft
		0-90°	1051.54	99.3		15.0ft	9.48 fc	7.6 ft	8.6 ft
						■ Vert. Spread: 28.5° ■ Horiz. Spread: 31.9°			