

ELEGANZA MAX

Cylinder LED Light

Architectural Round Cylinder | 4" Aperture | 12" Height

The Eleganza Max Pendant series offers a stunning and sophisticated solution for open ceilings, distinguished by its sleek machined aluminum body. This fully die-cast aluminum fixture stands out for its exceptional durability, refined aesthetics, and notably higher lumen output. The Eleganza Max can be further customized with a range of accessories, including the Snoot, Pin-hole, Glowing Ring, or Hexcell Louver.

Applications: Art Galleries | Show Rooms | Retail Stores | Hospitality | Education



DYNAMIC MENU

Order Information	Page 2
Dimensions	Page 3
Accessories	Page 5
Photometric Data	Page 7

[Install Instruction link](#)

SPECIFICATIONS

Input Voltage	120-277V
Power Factor	>0.9
Total Harmonic Distortion	<20%
Dimming Page 6	TRIAC, ELV & 0-10V Dimming
CRI	90 CRI
CCT	<div><div>27K</div><div>30K</div><div>35K</div><div>40K</div></div>
Efficacy	~73 lm/W at 90CRI (Standard)
Power	Up to 47W
Ambient Temperature Range	10°C to 35°C
Application	Indoors only
Mounting Options	<div>Stem Pendant Surface</div> <div><div></div><div></div><div></div></div>
Fixture Finish	Black White Silver Custom
Optic Accessory	Snoot Hex Louver Pin Hole Glowing Ring
Distribution	<div>Spot Narrow Flood Wide</div> <div><div>15°</div><div>35°</div><div>40°</div><div>55°</div></div>

eralux®

DATE	QTY	ACC. QTY	TYPE
PROJECT			
PN			
ACCESSORY PN			
NOTES			



PRODUCT FEATURES



Custom Color

PRODUCT CERTIFICATIONS



SYSTEM WARRANTY – 5 YEARS

Eralux will warrant defective drivers, LEDs and boards for 5 years from the date of purchase. This warranty is valid only if the fixture is installed and used as per installation guides and specifications. If a defect is present, Eralux will send drivers and boards at no fee with a thorough replacement instructions along with instructions on the return of the defective parts back to Eralux.

LUMEN MAINTENANCE – L85 at 50,000 hours

Rated for 85% initial lumen output at 50,000 hours of operation, operated at 25°C ambient temperature; per guidelines published by the Illuminating Engineering Society (IES).

Cylinder LED Light

Architectural Round Cylinder | 4" Aperture | 12" Height



ORDERING GUIDE

AE-CYL-EZM-50R12					-P-T	
AE-CYL-EZM-50R12 ERALUX ELEGANZA MAX 12" height fixture	-SF-00 Surface Mount -PC-12 Pendant 12' Aircraft Cable Adjustable 1-12' -SM-02 Stem Mount 2' Stem -SM-03 Stem Mount 3' Stem -SM-04 Stem Mount 4' Stem	-50 50W 3431 lm Programmable from 19-47W	-27 2700K -30 3000K -35 3500K -40 4000K 90 CRI	15 15" 30 30" 40 40" 55 55"	-P-T Premium 90 CRI	BK Black powder coat WH White powder coat SV Silver powder Coat RALXXX Custom
Fixture Family	Mounting	Power	CCT	Distribution	CRI	Finish

1. Programmable between 19-50 watts
2. Contact manufacture for custom color and size



Custom Color Guide

Custom Finish

RAL 6005 MOSS GREEN	RAL 6032 SIGNAL GREEN	RAL 6027 LIGHT GREEN	RAL 5003 SAPPHIRE BLUE	RAL 7001 SILVER GREY
RAL 7033 CEMENT GREY	RAL 7038 AGATE GREY	RAL 9001 CREAM	RAL 9006 SILVER	RAL 7040 WINDOW GREY
RAL 1015 LIGHT IVORY	RAL 2012 SALMON ORANGE	RAL 3031 ORIENT RED	RAL 8024 BEIGE BROWN	RAL 9003 SIGNAL WHITE
RAL 9007 GREY ALUMINUM	RAL 9022 LIGHT PEARL GREY	RAL 9023 PEARL DARK GREY	RAL 7011 IRON GREY	RAL 9004 SIGNAL BLACK



ORDERING GUIDE-ACCESSORIES

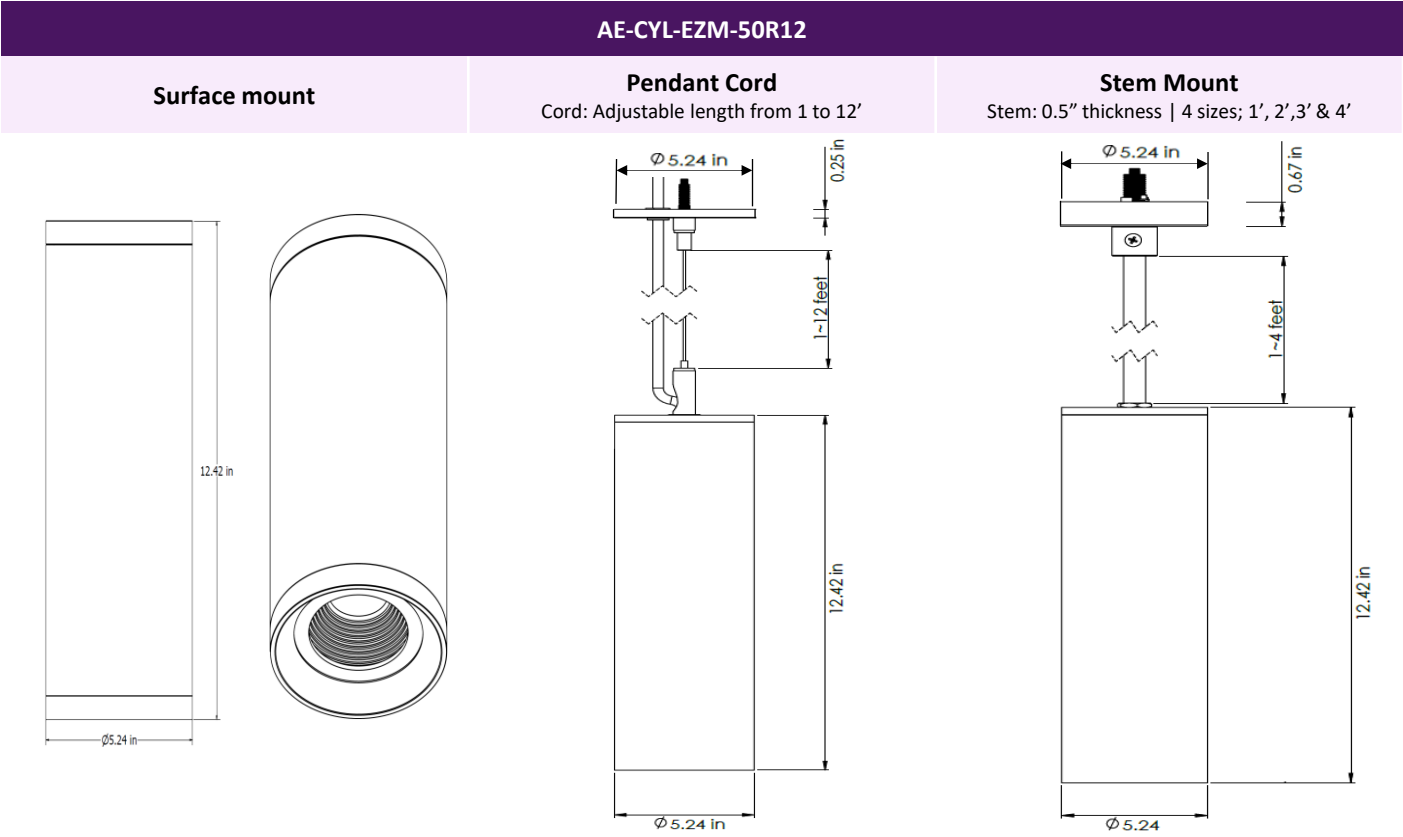
Ordered separately

AE-CYL-EZM	-HX
ERALUX ELEGANZA MAX Indoor Wall Mounted Fixture	Hex louwer -HXSNT Snoot Hex louwer -Glow Glow ring
Accessory Family	Accessory

AE-CYL-EZM-HX	-SNT	-BK
ERALUX ELEGANZA MAX Indoor Wall Mounted Fixture	Snoot -PIN Pinhole	Black -WH White -SV Silver -RALXXX¹ Custom colour
Accessory Family	Accessory	Finish

Cylinder LED Light
Architectural Round Cylinder | 4" Aperture | 12" Height

DIMENSIONS



Cylinder LED Light
Architectural Round Cylinder | 4" Aperture | 12" Height

ACCESSORIES

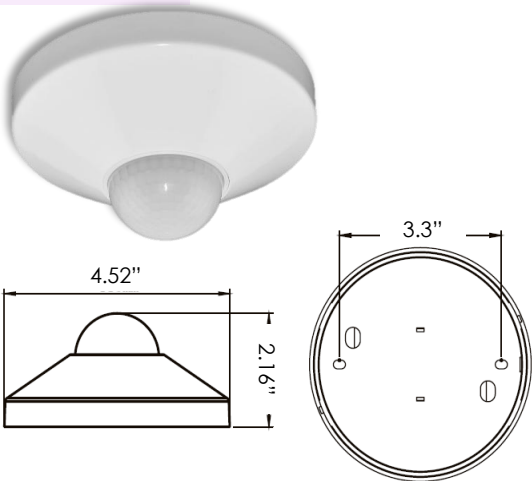
OPTICAL

ORDERING CODE	DESCRIPTION	PICTURE
AE-CYL-EZM-HX	Hex louver Reduce the glare of the light source and luminaire	
AE-CYL-EZM-HXSNT	Hex louver Reduce the glare of light source while using a snoot to control the light beam direction	
AE-CYL-EZM-SNT-BK	Black Snoot Control the direction and radius of the light beam	
AE-CYL-EZM-SNT-WH	White Snoot Control the direction and radius of the light beam	
AE-CYL-EZM-SNT-SV	Silver Snoot Control the direction and radius of the light beam	
AE-CYL-EZM-SNT-RALXXX	Custom color Snoot Control the direction and radius of the light beam	
AE-CYL-EZM-PIN-BK	Black Pinhole Plate to reduce the beam angle of the Eleganza Max	
AE-CYL-EZM-PIN-WH	White Pinhole Plate to reduce the beam angle of the Eleganza Max	
AE-CYL-EZM-PIN-SV	Silver Pinhole Plate to reduce the beam angle of the Eleganza Max	
AE-CYL-EZM-GLOW	Glowing ring Emits a light ring at the base of the cylinder	

Cylinder LED Light
Architectural Round Cylinder | 4" Aperture | 12" Height

ROOM OCCUPANCY SENSOR
Ordered separately, field installed

PART NUMBER	DESCRIPTION
AE-CT-DT806	Detecta - Room Occupancy Sensor
RC102	RC102 Remote Control



SPECIFICATIONS		
Input Voltage	120-277 Vac	
Power Frequency	50/60HZ	
Rated Load	At 120 Vac	800W
	At 277 Vac	1200W
Detection Range	3-10 Meters	
	9.8-32.75 Feet	
Standby Power	~0.9W	
Time Setting	10 sec to 30 min	
Light Control	10-2,000LUX	
Installation	Ceiling Mounted	

DIMMER COMPATIBILITY LIST
TRIAC/ELV Dimming

Brand	Model	Brand	Model
LUTRON	SLV-600X	LEVITON	6602-X
	S2-LX		6681-X
	GL-600H		6683-X
	NFTU-5A		6684-X
	DVLV-600P		700-X
COOPER	9530XXX		705-X
LIGHTOLIER	MP600X		6633
ADVANCE	SR150LED120		6674
			IPI06-1LZ

0-10V Dimming

Brand	Model
LUTRON, NOVA SERIES	NFTV
LUTRON, DIVA SERIES	DVTV
LEVITON, ILLUMATECH SERIES	IP710-DL

Cylinder LED Light

Architectural Round Cylinder | 4" Aperture | 12" Height

LUMEN ESTIMATE

Lumen output varies based on CCT and CRI. An estimate of lumen output of the various CCT/CRI combinations, use correction factors as per table below:

LUMEN ESTIMATE ADJUSTMENT FACTORS

CCT	2700K	3000K	3500K	4000K
90CRI	0.78	0.86	0.93	0.93

PHOTOMETRIC DATA

PART NUMBER		ZONAL LUMEN SUMMARY			POLAR LUMINOUS INTENSITY	CONE DISTRIBUTION		
AE-TL-EZM-50R12		Zone	Lumens	% Fixture	Direct Light	Center Beam Fc		Beam Width
Wattage	50W	0-20°	2357.92	76.70		1.7ft	7782 fc	0.4 ft 0.4 ft
CCT	3000K	0-30°	2755.97	89.70		3.3ft	2065 fc	0.9 ft 0.9 ft
Distribution	15°	0-40°	2901.03	94.40		5.0ft	900 fc	1.3 ft 1.3 ft
		0-60°	2996.00	97.50		6.7ft	501 fc	1.7 ft 1.8 ft
		0-80°	3017.73	98.20		8.3ft	326 fc	2.2 ft 2.2 ft
		0-90°	3025.38	98.40		10.0ft	225 fc	2.6 ft 2.6 ft
					■ Vert. Spread: 14.8° ■ Horiz. Spread: 15.0°			

PART NUMBER		ZONAL LUMEN SUMMARY			POLAR LUMINOUS INTENSITY	CONE DISTRIBUTION		
AE-TL-EZM-50R12		Zone	Lumens	% Fixture	Direct Light	Center Beam Fc		Beam Width
Wattage	50W	0-20°	1908.80	60.40		1.7ft	2699 fc	1.0 ft 1.0 ft
CCT	3000K	0-30°	2702.14	85.50		3.3ft	716 fc	2.0 ft 2.0 ft
Distribution	30°	0-40°	2968.68	93.90		5.0ft	312 fc	3.1 ft 3.1 ft
		0-60°	3080.04	97.50		6.7ft	174 fc	4.1 ft 4.1 ft
		0-80°	3106.04	98.30		8.3ft	113 fc	5.1 ft 5.1 ft
		0-90°	3113.24	98.50		10.0ft	78 fc	6.2 ft 6.2 ft
					■ Vert. Spread: 34.2° ■ Horiz. Spread: 34.3°			

PART NUMBER		ZONAL LUMEN SUMMARY			POLAR LUMINOUS INTENSITY	CONE DISTRIBUTION		
AE-TL-EZM-50R12		Zone	Lumens	% Fixture	Direct Light	Center Beam Fc		Beam Width
Wattage	50W	0-20°	1672.46	52.90		1.7ft	1973 fc	1.4 ft 1.3 ft
CCT	3000K	0-30°	2600.35	82.20		3.3ft	524 fc	2.6 ft 2.6 ft
Distribution	40°	0-40°	2945.16	93.10		5.0ft	228 fc	4.0 ft 3.9 ft
		0-60°	3080.05	97.40		6.7ft	127 fc	5.3 ft 5.3 ft
		0-80°	3107.15	98.20		8.3ft	82.8 fc	6.6 ft 6.5 ft
		0-90°	3114.76	98.50		10.0ft	57 fc	8.0 ft 7.9 ft
					■ Vert. Spread: 43.4° ■ Horiz. Spread: 43.0°			

PART NUMBER		ZONAL LUMEN SUMMARY			POLAR LUMINOUS INTENSITY	CONE DISTRIBUTION		
AE-TL-EZM-50R12		Zone	Lumens	% Fixture	Direct Light	Center Beam Fc		Beam Width
Wattage	50W	0-20°	861.74	30.70		1.7ft	906 fc	2.0 ft 2.0 ft
CCT	3000K	0-30°	1613.16	57.50		3.3ft	240 fc	3.9 ft 3.9 ft
Distribution	55°	0-40°	2256.68	80.50		5.0ft	105 fc	5.9 ft 5.9 ft
		0-60°	2710.38	96.70		6.7ft	58.3 fc	7.8 ft 7.9 ft
		0-80°	2748.59	98.00		8.3ft	38 fc	9.7 ft 9.8 ft
		0-90°	2756.30	98.30		10.0ft	26.2 fc	11.7 ft 11.8 ft
					■ Vert. Spread: 60.7° ■ Horiz. Spread: 61.0°			

Cylinder LED Light

Architectural Round Cylinder | 4" Aperture | 12" Height

OVERVIEW



Innovative Design

- Aluminum die cast housing for better heat dissipation.
- Improved design extends LED and driver lifespan.



Multiple Options

- 15W power | 1,200 Lumens; Can be tuned down to 19W
- Variety of beam angles.
- Three CCTs available.
- Black, white, and silver finishes.



Mountings Options

- Surface mount.
- Stem mount; 1', 2', 3', and 4' (0.5" thickness).
- Pendant cord mount; adjustable 1-12' cord.



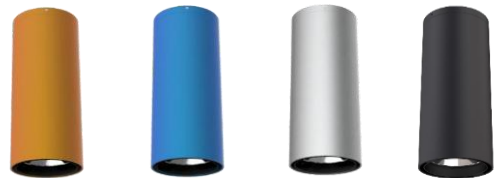
Feature

- Customized color
- Tunable Power down to 19W | 1387 lm upon request



Accessories

- Hex louver
- Glowing ring
- Snoot available in different finishes
- Pin hole



Glowing Ring



Hex Louver



Snoot



Tests And Certifications

