

LED TRACK LIGHT

Linear Snap-In Track Head | Jupiter Series

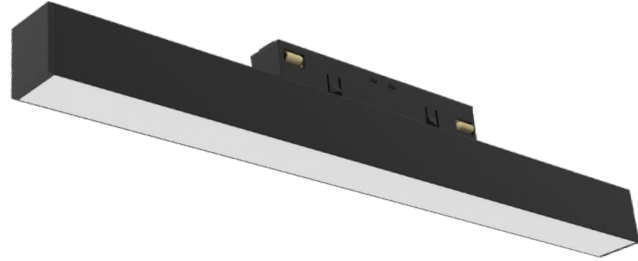
The Ersa is a linear track head compatible with the Jupiter snap-in track system, available in multiple CCTs and color finishes to suit a variety of applications. Its simple snap-in design allows for quick, straightforward installation. Once installed, the Ersa sits flush with the track for a sleek, refined profile.

Applications: Art Galleries | Show Rooms | Retail Stores | Hospitality

	DATE	QTY	ACC. QTY	TYPE
PROJECT				
PN				
ACCESSORY PN				
NOTES				

DYNAMIC MENU	
Order Information	Page 2
Dimensions	Page 3
Photometric Data	Page 3

[Install Instruction link](#)



SPECIFICATIONS

Input Voltage	DC 48V
Power Factor	>0.9
Total Harmonic Distortion	<20%
Dimming	0-10V dimming available with external driver (ordered separately)
CRI	90 CRI
CCT	<div style="display: flex; gap: 10px;"> <div style="border: 1px solid black; border-radius: 50%; padding: 2px 5px;">30K</div> <div style="border: 1px solid black; border-radius: 50%; padding: 2px 5px;">40K</div> </div>
Efficacy	38 LPW
Power	15W
Mounting Adapter	Jupiter snap-in track
Fixture Finish	Black White
Housing Material	Die-cast aluminum
Distribution	105° beam angle

PRODUCT CERTIFICATIONS



SYSTEM WARRANTY – 3 YEARS

Eralux will warrant defective drivers, LEDs and boards for 3 years from the date of purchase. This warranty is valid only if the fixture is installed and used as per installation guides and specifications. If a defect is present, Eralux will send drivers and boards at no fee with a thorough replacement instructions along with instructions on the return of the defective parts back to Eralux.

LUMEN MAINTENANCE – L70 at 55,000 hours

Rated for 70% initial lumen output at 55,000 hours of operation, operated at 25°C ambient temperature; per guidelines published by the Illuminating Engineering Society (IES).

LED TRACK LIGHT

Linear Snap-In Track Head | 2' Length



ORDERING GUIDE

JP-ER	-15W	-105		
JP-ER ERALUX Ersa Linear Snap-In Track Head Jupiter Series	-15W 15W 570 lm	-105 105° Distribution	30 3000K 40 4000K	-BK Black Finish -WH White Finish

Fixture Family	Power	Distribution	CCT	Finish
-----------------------	--------------	---------------------	------------	---------------





NOTES

- The Ersa track head does not come with an integral driver. The ELG-75-48AB driver must be ordered separately. See Jupiter track spec sheets for more information.



JUPITER SNAP-IN TRACK SYSTEM

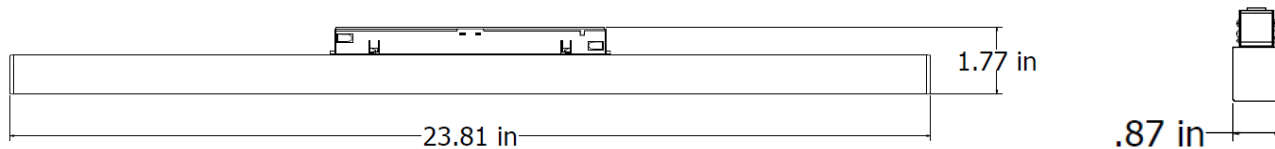
Available in 4ft or 8ft lengths.

MODEL	DEPTH	MOUNTING	PICTURE
<u>ST6</u>	1"	Surface or Suspended	
<u>ST2</u>	2"		
<u>ST8</u>	1"	Recessed	
<u>ST18</u>	2"		

LED TRACK LIGHT

Linear Snap-In Track Head | 2' Length

DIMENSIONS



LUMEN ESTIMATE

Lumen output varies based on CCT and CRI. Use correction factors as per table below:

LUMEN ESTIMATE ADJUSTMENT FACTORS		
CCT	3000K	4000K
PREMIUM (90CRI)	1	1.06

PHOTOMETRIC DATA

PART NUMBER	ZONAL LUMEN SUMMARY			POLAR LUMINOUS INTENSITY	CONE DISTRIBUTION			
	Zone	Lumens	% Fixture	Direct Light	Center Beam Fc	Beam Width		
JP-ER-15W-WW30-XX								
Wattage	15W	0-20°	78.14		13.7	2.5R	34.6 fc	6.3 ft 6.7 ft
CCT	3000K	0-30°	163.61		28.6	5.0R	8.66 fc	12.6 ft 13.5 ft
Distribution	105°	0-40°	263.93		46.2	7.5R	3.85 fc	18.9 ft 20.2 ft
Lumens	571	0-60°	455.26		79.7	10.0R	2.17 fc	25.1 ft 27.0 ft
		0-80°	559.81		98.0	12.5R	1.39 fc	31.4 ft 33.7 ft
		0-90°	568.54	99.5	15.0R	0.96 fc	37.7 ft 40.4 ft	

■ Vert. Spread: 103.0°
■ Horiz. Spread: 106.9°