

# EZ M WALL-MOUNT

## Cylinder LED Light

### Architectural Round Cylinder | 4" Aperture | 12" Height

The EZ M Wall-Mount Series offers a stylish and elegant solution for open ceilings. Made from high-quality machined aluminum, this fixture combines durability with a sleek design. You can customize the EZ M with a range of accessories, including a Snoot, Pin-Hole, Glowing Ring, or Hex Louver. It provides both direct and indirect lighting with various beam angles, making it a versatile choice for any space.

Applications: Art Galleries | Show Rooms | Retail Stores | Hospitality | Education

eralux®

DATE	QTY	ACC. QTY	TYPE
PROJECT			
PN			
ACCESSORY PN			
NOTES			



#### DYNAMIC MENU

Order Information	<a href="#">Page 2</a>
Dimensions	<a href="#">Page 3</a>
Accessories	<a href="#">Page 5</a>
Photometric Data	<a href="#">Page 7</a>

[Install Instruction link](#)

#### SPECIFICATIONS

Input Voltage	120-277V
Power Factor	>0.9
Total Harmonic Distortion	<20%
Dimming <a href="#">Page 6</a>	TRIAC, ELV & 0-10V Dimming
CRI	90 CRI
CCT	<div><div>27K</div><div>30K</div><div>35K</div><div>40K</div></div>
Efficacy	~90 lm/W at 90CRI (Standard)
Power	Up to 50W
Ambient Temperature Range	10°C to 35°C
Mounting Options	Wall Mount 
Fixture Finish	Black   White   Silver   Custom
Optic Accessory	Snoot   Hex Louver   Pin Hole Glowing Ring
	Direct   Indirect   Direct/indirect Spot   Narrow   Flood   Wide
Distribution	<div><div></div><div></div><div></div><div></div></div> <div>15° 30° 40° 55°</div>



#### PRODUCT FEATURES



Custom Color

#### PRODUCT CERTIFICATIONS



#### SYSTEM WARRANTY – 5 YEARS

Eralux will warrant defective drivers, LEDs and boards for 5 years from the date of purchase. This warranty is valid only if the fixture is installed and used as per installation guides and specifications. If a defect is present, Eralux will send drivers and boards at no fee with a thorough replacement instructions along with instructions on the return of the defective parts back to Eralux.

#### LUMEN MAINTENANCE – L85 at 50,000 hours

Rated for 85% initial lumen output at 50,000 hours of operation, operated at 25°C ambient temperature; per guidelines published by the Illuminating Engineering Society (IES).

# EZ M WALL-MOUNT

eralux®

## Cylinder LED Light

Architectural Round Cylinder | 4" Aperture | 12" Height

### ORDERING GUIDE

**AE-CYL-EZM-50R-12**

**-50**

**-P-T**

**AE-CYL-EZM-50R-12**

ERALUX ELEGANZA MAX  
Indoor Cylindrical Wall  
Mounted Fixture

**-WM1**

Wall Mount  
Direct or indirect  
only

**-WM2**

Wall Mount  
Direct/Indirect

**-50<sup>1</sup>**

25 each  
side or  
50 one  
side  
4040 lm

**-27**

2700K  
**-30**  
300K  
**-35**  
3500K  
**-40**  
4000K

**[BLANK]**

No downlight

**15**

15°

**30**

30°

**40**

40°

**55**

55°

**[BLANK]**

No uplight

**15**

15°

**30**

30°

**40**

40°

**55**

55°

**-P-T**

90 CRI

**-WH**

White

**-BK**

Black

**-SV**

Silver

**-RALXXXX<sup>2</sup>**

Custom

#### Fixture Family

#### Mounting

#### Power

#### CCT

#### Direct Beam

#### Indirect Beam

#### CRI

#### Finish

1. Programmable between 19-50 watts
2. Contact manufacture for custom color and size



### Custom Color Guide

Custom Finish



### ORDERING GUIDE-ACCESSORIES

Ordered separately

**AE-CYL-EZM**

ERALUX ELEGANZA MAX  
Indoor Wall Mounted Fixture

**-HX**

Hex louver

**-HXSNT**

Snoot Hex louver

**-Glow**

Glow ring

Accessory Family

Accessory

**AE-CYL-EZM-HX**

ERALUX ELEGANZA  
MAX Indoor Wall  
Mounted Fixture

**-SNT**

Snoot

**-PIN**

Pinhole

**-BK**

Black

**-WH**

White

**-SV**

Silver

**-RALXXXX<sup>1</sup>**

Custom colour

Accessory Family

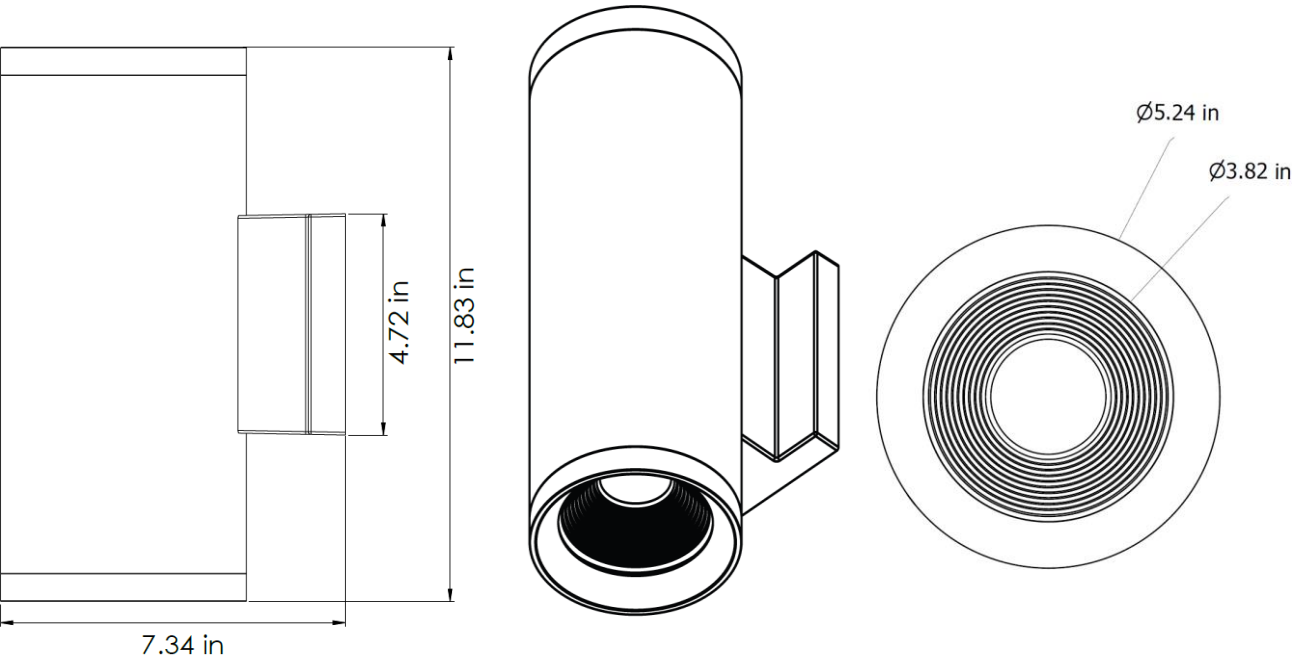
Accessory

Finish

Cylinder LED Light  
Architectural Round Cylinder | 4" Aperture | 12" Height

DIMENSIONS

AE-TL-EZM-50R-12-WM1-50W



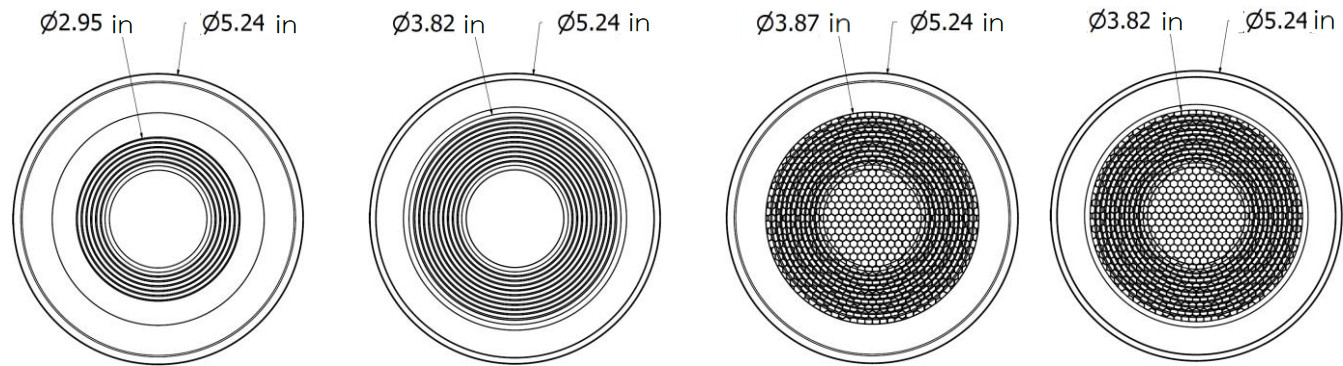
Accessories

Pinhole

Snoot

Hex Louver

Hex Louver + Snoot



Cylinder LED Light  
Architectural Round Cylinder | 4" Aperture | 12" Height

ACCESSORIES

OPTICAL

ORDERING CODE	DESCRIPTION	PICTURE
AE-CYL-EZM-HX	Hex louver Reduce the glare of the light source and luminaire	
AE-CYL-EZM-HXSNT	Hex louver Reduce the glare of light source while using a snoot to control the light beam direction	
AE-CYL-EZM-SNT-BK	Black Snoot Control the direction and radius of the light beam	
AE-CYL-EZM-SNT-WH	White Snoot Control the direction and radius of the light beam	
AE-CYL-EZM-SNT-SV	Silver Snoot Control the direction and radius of the light beam	
AE-CYL-EZM-SNT-RALXXX	Custom color Snoot Control the direction and radius of the light beam	
AE-CYL-EZM-PIN-BK	Black Pinhole Plate to reduce the beam angle of the Eleganza Max	
AE-CYL-EZM-PIN-WH	White Pinhole Plate to reduce the beam angle of the Eleganza Max	
AE-CYL-EZM-PIN-SV	Silver Pinhole Plate to reduce the beam angle of the Eleganza Max	
AE-CYL-EZM-GLOW	Glowing ring Emits a light ring at the base of the cylinder	

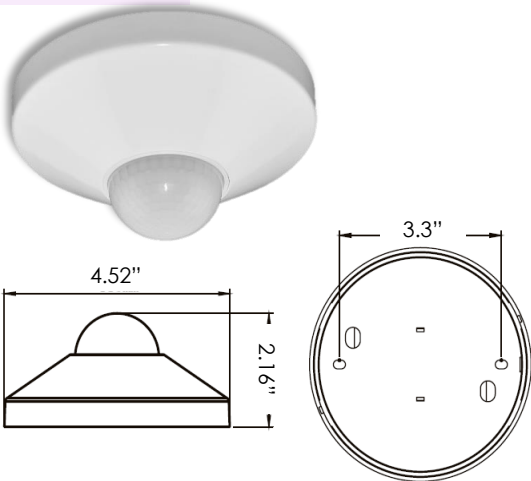
Cylinder LED Light

Architectural Round Cylinder | 4" Aperture | 12" Height

ROOM OCCUPANCY SENSOR

Ordered separately, field installed

PART NUMBER	DESCRIPTION
AE-CT-DT806	Detecta - Room Occupancy Sensor
RC102	RC102 Remote Control



SPECIFICATIONS		
Input Voltage	120-277 Vac	
Power Frequency	50/60HZ	
Rated Load	At 120 Vac	800W
	At 277 Vac	1200W
Detection Range	3-10 Meters	
	9.8-32.75 Feet	
Standby Power	~0.9W	
Time Setting	10 sec to 30 min	
Light Control	10-2,000LUX	
Installation	Ceiling Mounted	

DIMMER COMPATIBILITY LIST

TRIAC/ELV Dimming

Brand	Model	Brand	Model
LUTRON	SLV-600X	LEVITON	6602-X
	S2-LX		6681-X
	GL-600H		6683-X
	NFTU-5A		6684-X
	DVLV-600P		700-X
COOPER	9530XXX		705-X
LIGHTOLIER	MP600X		6633
ADVANCE	SR150LED120		6674
			IPI06-1LZ

0-10V Dimming

Brand	Model
LUTRON, NOVA SERIES	NFTV
LUTRON, DIVA SERIES	DVTV
LEVITON, ILLUMATECH SERIES	IP710-DL

## Cylinder LED Light

Architectural Round Cylinder | 4" Aperture | 12" Height

## LUMEN ESTIMATE

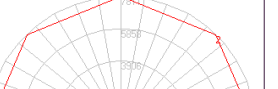
Lumen output varies based on CCT and CRI. An estimate of lumen output of the various CCT/CRI combinations, use correction factors as per table below:

## LUMEN ESTIMATE ADJUSTMENT FACTORS

CCT	2700K	3000K	3500K	4000K
90CRI	0.78	0.86	0.93	0.93

## PHOTOMETRIC DATA

PART NUMBER		ZONAL LUMEN SUMMARY			POLAR LUMINOUS INTENSITY	CONE DISTRIBUTION			
AE-TL-EZM-50R-12-WM1-50W		Zone	Lumens	% Fixture	Direct Light	Center Beam Fc		Beam Width	
Wattage	50W	0-20°	3003.91	78.3		1.7ft	9941 fc	0.4 ft	0.5 ft
CCT	3000K	0-30°	3457.51	90.1		3.3ft	2638 fc	0.9 ft	0.9 ft
Distribution	15°	0-40°	3631.24	94.6		5.0ft	1149 fc	1.3 ft	1.3 ft
		0-60°	3758.42	97.9		6.7ft	640 fc	1.8 ft	1.8 ft
		0-80°	3788.32	98.7		8.3ft	417 fc	2.2 ft	2.2 ft
		0-90°	3794.98	98.9		10.0ft	287 fc	2.6 ft	2.7 ft
				■ Vert. Spread: 14.9° ■ Horiz. Spread: 15.1°					

PART NUMBER		ZONAL LUMEN SUMMARY			POLAR LUMINOUS INTENSITY	CONE DISTRIBUTION			
AE-TL-EZM-50R-12-WM1-50W		Zone	Lumens	% Fixture	Direct Light	Center Beam Fc		Beam Width	
Wattage	50W	0-20°	2387.49	59.7		1.7ft	3340 fc	1.1 ft	1.1 ft
CCT	3000K	0-30°	3388.86	84.7		3.3ft	886 fc	2.1 ft	2.1 ft
Distribution	30°	0-40°	3744.59	93.6		5.0ft	386 fc	3.1 ft	3.1 ft
		0-60°	3909.92	97.7		6.7ft	215 fc	4.2 ft	4.2 ft
		0-80°	3948.28	98.7		8.3ft	140 fc	5.2 ft	5.2 ft
		0-90°	3955.17	98.9		10.0ft	96.5 fc	6.2 ft	6.2 ft
				■ Vert. Spread: 34.5° ■ Horiz. Spread: 34.6°					

PART NUMBER		ZONAL LUMEN SUMMARY			POLAR LUMINOUS INTENSITY	CONE DISTRIBUTION			
AE-TL-EZM-50R-12-WM1-50W		Zone	Lumens	% Fixture	Direct Light	Center Beam Fc		Beam Width	
Wattage	50W	0-20°	2140.77	52.8		1.7ft	2505 fc	1.4 ft	1.4 ft
CCT	3000K	0-30°	3341.91	82.5		3.3ft	665 fc	2.6 ft	2.6 ft
Distribution	40°	0-40°	3784.43	93.4		5.0ft	290 fc	4.0 ft	4.0 ft
		0-60°	3963.3	97.8		6.7ft	161 fc	5.3 ft	5.3 ft
		0-80°	3999.09	98.7		8.3ft	105 fc	6.6 ft	6.6 ft
		0-90°	4006.09	98.9		10.0ft	72.4 fc	7.9 ft	8.0 ft
				■ Vert. Spread: 43.3° ■ Horiz. Spread: 43.5°					

PART NUMBER		ZONAL LUMEN SUMMARY			POLAR LUMINOUS INTENSITY	CONE DISTRIBUTION		
AE-TL-EZM-50R-12-WM1-50W		Zone	Lumens	% Fixture	Direct Light	Center Beam Fc		Beam Width
Wattage	50W	0-20°	1117.27	30.6		1.7ft	1181 fc	1.9 ft 2.0 ft
CCT	3000K	0-30°	2080.75	57.1		3.3ft	313 fc	3.8 ft 3.8 ft
Distribution	55°	0-40°	2902.84	79.6		5.0ft	136 fc	5.7 ft 5.8 ft
		0-60°	3534.76	97		6.7ft	76 fc	7.7 ft 7.7 ft
		0-80°	3597.54	98.7		8.3ft	49.5 fc	9.5 ft 9.6 ft
		0-90°	3604.64	98.9		10.0ft	34.1 fc	11.4 ft 11.5 ft
				■ Vert. Spread: 59.5° ■ Horiz. Spread: 60.0°				

## Cylinder LED Light

Architectural Round Cylinder | 4" Aperture | 12" Height

### OVERVIEW



#### Innovative Design

- Aluminum die cast housing for better heat dissipation.
- Improved design extends LED and driver lifespan.



#### Multiple Options

- 50W power | 4500 Lumens; Can be tuned down to 19W
- Variety of beam angles.
- Four CCTs available.
- Black, white, silver and custom finishes.



#### Distribution

- Direct/Indirect.
- Direct only.
- Indirect only.



#### Feature

- Customized color
- Tunable Power down to 19W | 1710 lm upon request



#### Accessories

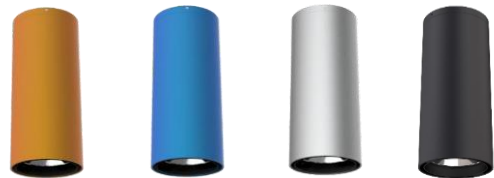
- Hex louver
- Glowing ring
- Snoot available with different finishes



Glowing Ring

Hexcell Louver

Snoot



#### Tests And Certifications

