

FLEXA

DECORATIVE FLEXIBLE FIXTURE

Decorative Lighting

Flexa is a revolutionary lighting solutions designed to illuminate spaces with unparalleled adaptability. Engineered with precision, this innovative lighting system boasts 360-degree light dispersion. This fixture comes standard with an insert enabling it to be bent into various shapes, while maintaining its sleek and sophisticated design. It has various mounting options: Surface Mount, and Pendant either vertically or horizontally. Furthermore, it can withstand any pattern and maintain its uniform look and distribution. FLEXA is ideal for any space where differentiation and uniqueness is key!

eralux®



| | | | | | |
|---------------|----------|-----|---|----|---|
| DATE | | | | | |
| PROJECT NAME | | | | | |
| TYPE | | | | | |
| QTY | | | | | |
| ORDERING CODE | AE-DC-FX | -16 | - | 90 | - |

OPERATING & ELECTRICAL

| | |
|---------------------------------|------------|
| INPUT VOLTAGE | 120-277V |
| POWER FACTOR | 0.9 |
| DIMMING | No dimming |
| TOTAL HARMONIC DISTORTION (THD) | <20% |

PERFORMANCE

| | |
|-----------------|-----------------------------------|
| LUMENS PER FEET | ~500lm/FT |
| POWER | ~6W/FT |
| BEAM ANGLE | 360° |
| FEATURES | Hold Shape (has metal rod inside) |

MECHANICAL & HOUSING

| | |
|-----------------------|---|
| CONSTRUCTION | Silicone body Metal end cap |
| FINISH | Silver (End Caps) White Silicone (Body) |
| POWER SUPPLY | 75W DC Driver |
| LED BOARD | LED Array |
| FREE BEND TO PATTERNS | Comes with metal insert that enables the fixture to withstand various shape |

APPLICATION CONDITION

| | |
|---------------------------|--|
| AMBIENT TEMPERATURE RANGE | -20°C to 45°C |
| STORAGE TEMPERATURE | -20°C to 60°C |
| PROTECTION | IP20 IK 08 FLAME RESISTANCE Anti-UV Grade : UVA-340 |

COMPATIBLE MOUNTING

| | |
|----------|--------------------|
| MOUNTING | Surface Pendant |
|----------|--------------------|

WARRANTY

SYSTEM WARRANTY – 5 YEARS

Eralux will warrant defective drivers, LEDs and boards for 5 years from the date of purchase. This warranty is valid only if the fixture is installed and used as per installation instructions and specifications. If a defect is present, Eralux will send drivers and boards at no fee with a thorough replacement instructions along with instructions on the return of the defective parts back to Eralux.

LUMEN MAINTENANCE – L85 at 50,000 hours

Rated for 85% initial lumen output at 50,000 hours of operation, operated at 25°C ambient temperature; per guidelines published by the Illuminating Engineering Society (IES).

| | | | | | |
|---------------|----------|-----|---|----|---|
| DATE | | | | | |
| PROJECT NAME | | | | | |
| TYPE | | | | | |
| QTY | | | | | |
| ORDERING CODE | AE-DC-FX | -16 | - | 90 | - |

ORDERING GUIDE FOR 16FT FLEXA

EXAMPLE: AE-DC-FX-16-3090-H-AIR

| FIXTURE FAMILY | LENGTH | CCT | CRI | MOUNTING |
|--|-----------------------|-------------------------|----------------------|---|
| AE-DC-FX | - | - | 90 | - |
| AE-DC-FX ERALUX Flexa Decorative free bend to patterns Flexible Fixture | -16 16 Feet | -30 3000K CCT | -90 90 CRI | -H-SMT Horizontal surface mount |
| | 6W/FT 483LM/FT | -35 3500K CCT | | -H-AIR Horizontal pendant mount |
| | | -40 4000K CCT | | -H-AIR-LINK Horizontal pendant mount |
| | | | | -CUSTOM Comes with just one driver and driver box, this is for custom mounting, refer to page 5 |

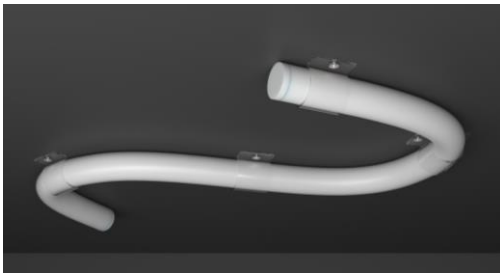
Power cord is 15FT and suspension wire is 6FT.

The ordering guide for custom mounting option is at page 5.

MOUNTING OPTIONS

AE-DC-FX-16-XX90-H-SMT

Horizontal surface mount



ACCESSORIES

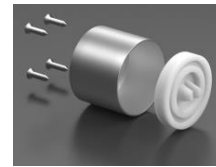
U-Bracket



Driver Box



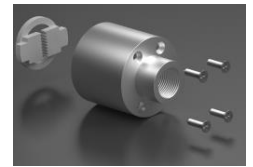
Tail end cap



Driver



Straight through end cap

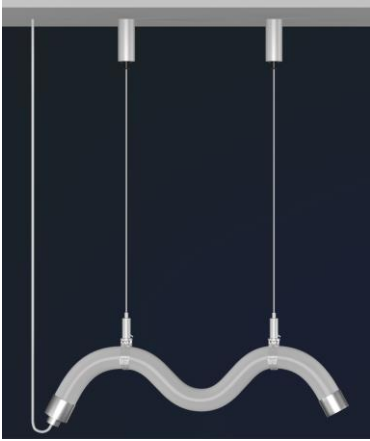


| | | | | | |
|---------------|----------|-----|---|----|---|
| DATE | | | | | |
| PROJECT NAME | | | | | |
| TYPE | | | | | |
| QTY | | | | | |
| ORDERING CODE | AE-DC-FX | -16 | - | 90 | - |

MOUNTING OPTIONS

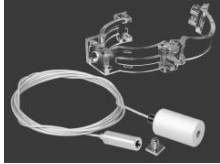
AE-DC-FX-16-XX90-H-AIR

Horizontal pendant mount

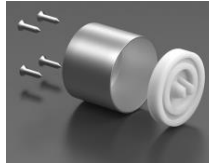


ACCESSORIES

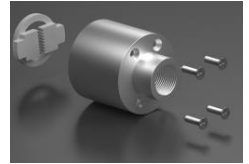
Suspension kit



Tail end cap



Straight through end cap



Side through end cap



Driver Box



Driver

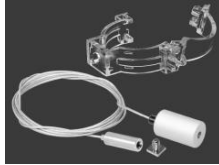


AE-DC-FX-16-XX90-H-AIR-LINK

Horizontal pendant mount with link

ACCESSORIES

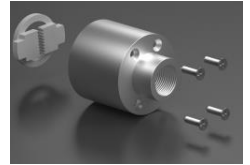
Suspension kit



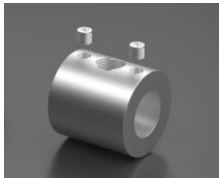
Side through end cap



Straight through end cap



T connector



Driver Box



Driver

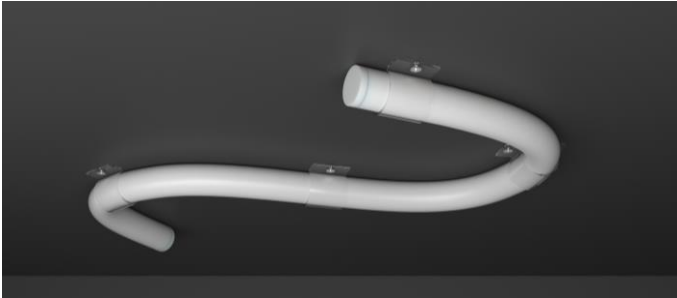
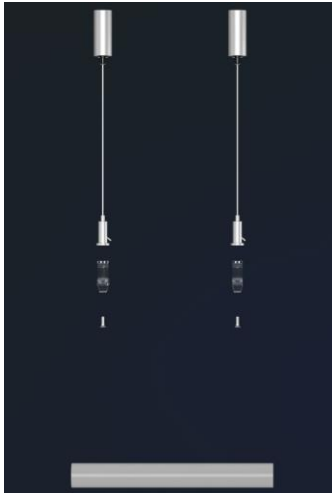
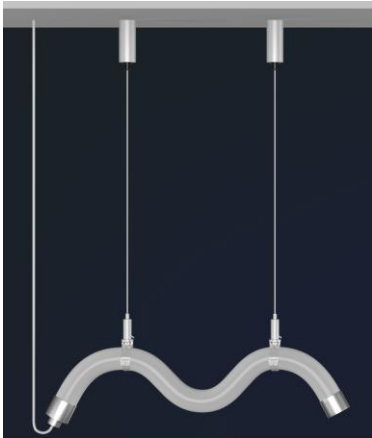


| | |
|---------------|---------------------|
| DATE | |
| PROJECT NAME | |
| TYPE | |
| QTY | |
| ORDERING CODE | AE-DC-FX -16 - 90 - |

MOUNTING OPTIONS BOM

There are unlimited mounting possibilities for Flexa, and they can be divided under two main options surface mount and suspended either vertical or horizontal. You can add more accessories

Table below shows the BOM for each part number that represents different mounting option.

| MOUNTING OPTION | PART NUMBER | MATERIALS |
|--|---|---|
|  | Horizontal surface mount AE-DC-FX-16-XX90-H-SMT | 1: 16 FT Flexy 1: Driver 1: Driver box 1: End cap straight through 1: Tail end cap 6: U-bracket The U-Bracket is dependent on the length and the shape of Flexy. 3FT=1 U-Bracket or 1 curve = 1 U-bracket. Order more if needed |
|   | Horizontal pendant mount AE-DC-FX-16-XX90-H-AIR | 1: 16 FT Flexa 1: Driver 1: Driver box 1: End cap straight through 1: Tail end cap 1: Side through end cap 6: Suspension kit (pendant clips and suspension wires 6FT) The suspension kit is dependent on the length and the shape of Flexa. 3FT=1 Suspension kit. or 1 curve = 1 Suspension kit. Order more if needed |
| | Horizontal pendant mount with link AE-DC-FX-16-XX90-H-AIR-LINK This is used to connect two or more Flexa with each other. | 1: 16 FT Flexy 1: Driver 1: Driver box 2: End cap straight through 1: T connector 1: Side through end cap 6: Suspension kit (pendant clips and suspension wires 6FT) |

| | |
|---------------|---------------------|
| DATE | |
| PROJECT NAME | |
| TYPE | |
| QTY | |
| ORDERING CODE | AE-DC-FX -16 - 90 - |

ORDERING GUIDE FOR CUSTOM MOUNTING

EXAMPLE: AE-DC-FX-16-3090-CUSTOM

| FIXTURE FAMILY | LENGTH | CCT | CRI | MOUNTING |
|--|------------------------|-------------------------|----------------------|--|
| AE-DC-FX | -16 | - | 90 | -CUSTOM |
| AE-DC-FX ERALUX Flexa Decorative free bend to patterns Flexible Fixture | -16 16 Feet. | -30 3000K CCT | -90 90 CRI | -CUSTOM For custom mounting option comes with Driver ELG-75-24A. Each 16 FT Flexa comes with 1 driver and driver box. Can be a mix of any mounting option Choose from below tables the accessories needed for the desired mounting option. |
| | | -35 3500K CCT | | |
| | | -40 4000K CCT | | |

Power cord 15 FT and suspension wire 6 FT. Each fixture comes with straight through end cap, tail end cap and driver.

ORDERING GUIDE ACCESSORIES

For the custom choice you will get XXFT Flexa with driver, 1 end cap straight through, 1 tail end cap, and you can add the accessories needed to create the desired design from the tables below. Or you can send us the design you want, and we will build the BOM.

End cap accessories

| ACCESSORY FAMILY | PART | QUANTITY |
|--|---|----------|
| DC-FX-ACC-ALEC | - | |
| DC-FX-ACC-ALEC End cap for Flexa | -STRAIGHT THROUGH Straight through end cap | |
| | -TAIL Tail end cap | |
| | -TCONNECTOR T connector | |
| | -CEILING FIXED BOLT Ceiling fixed bolt | |
| | -SIDE THROUGH End cap for cable side through | |

Installation accessories


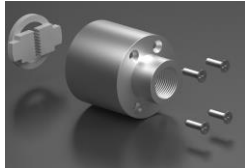


| ACCESSORY FAMILY | PART | QUANTITY |
|--|--|----------|
| DC-FX-ACC-IN | - | |
| DC-FX-ACC-IN Flexa installation accessories for horizontal and vertical | -U BRACKET U bracket for ceiling mount | |
| | -SUS-CLIP-WIRE Pendant clip and suspension wire | |
| | -CANOPY Canopy | |
| | -DRIVER BOX Driver box To hide the driver | |

More information about the accessories are in next pages.

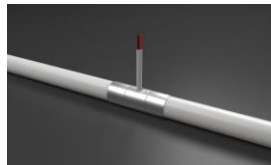
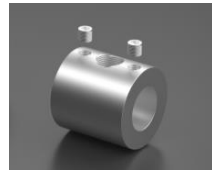
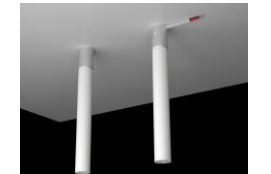



| | | | | | |
|---------------|----------|-----|---|----|---|
| DATE | | | | | |
| PROJECT NAME | | | | | |
| TYPE | | | | | |
| QTY | | | | | |
| ORDERING CODE | AE-DC-FX | -16 | - | 90 | - |

ACCESSORIES

Aluminum end cap, there are two end cap:

| IMAGE | DIAGRAM | DESCRIPTION | ITEM NUMBER |
|--|---|---|--------------------------------|
|  |  | End cap for cable straight through. Used on the side where the power cord is. Φ 25.8 X L 33mm | DC-FX-ACC-ALEC-STRAIGH THROUGH |
|  |  | Tail end cap. Used on the other side of the Flexa. Φ 25.8 X L 25mm | DC-FX-ACC-ALEC-TAIL |




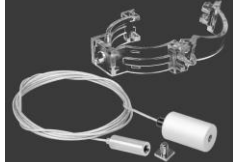

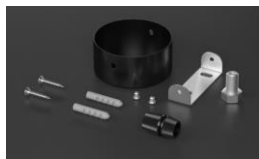


Aluminum end cap accessories, there are three accessories that can be added to end cap.

| IMAGE | DIAGRAM | DESCRIPTION | ITEM NUMBER |
|--|---|---|-----------------------------------|
|  |  | T connector Used to connect two Flexa with each other through 2 straight through end cap. Φ 25.8 X L 33mm | DC-FX-ACC-ALEC-TCONNECTOR |
|  |  | Ceiling fixed bolt for cable straight and side through. Used for surface mounting, It is connected to straight through end cap. Φ 25.8 X L 25mm | DC-FX-ACC-ALEC-CEILING FIXED BOLT |
|  |  | End cap for cable side through. It is connected to straight through end cap to pass the cord sideways. Φ 29.8 X L 25mm | DC-FX-ACC-ALEC-SIDE THROUGH |

| | | | | | |
|---------------|----------|-----|---|----|---|
| DATE | | | | | |
| PROJECT NAME | | | | | |
| TYPE | | | | | |
| QTY | | | | | |
| ORDERING CODE | AE-DC-FX | -16 | - | 90 | - |

ACCESSORIES MOUNTING ACCESSORIES

In the table below are different types for accessories needed for installation of Flexa.

| IMAGE | ACCESSORY | DESCRIPTION | ITEM NUMBER |
|--|---|--|----------------------------|
|  |  | U bracket for ceiling mounted The U-Bracket is dependent on the length of Flexa 3FT=1 U-Bracket | DC-FX-ACC-IN-U BRACKET |
|  |  | Pendant clip and suspension wire (6ft) for pendant mounting The suspension kit is dependent on the length of Flexa 3FT=1 suspensions kit | DC-FX-ACC-IN-SUS-CLIP-WIRE |
|  |  | Canopy for pendant | DC-FX-ACC-IN-CANOPY |
|  |  | Driver box. Used to install the driver inside it. | DC-FX-ACC-IN-DRIVER BOX |

Driver

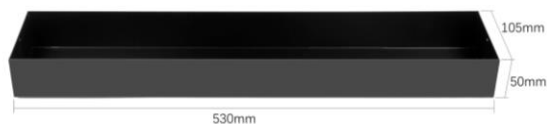
The driver used is **ELG-75-24A**, one driver needed every 16FT.

| | Output |
|---------------|--------|
| DC Voltage | 24V |
| Rated current | 3.15A |
| Rated power | 75.6W |



DRIVER BOX

The driver box is a housing which can be surface mounted to hide the driver next to the Flexa. It can be order separately.



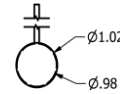
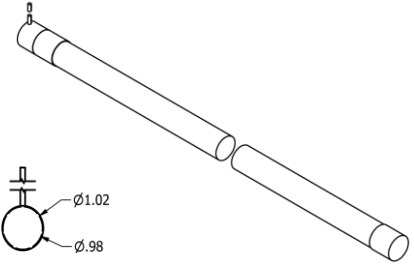
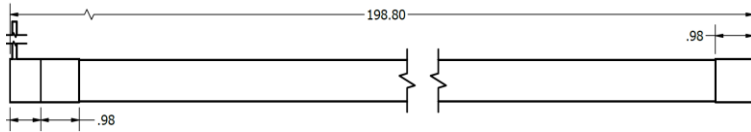
| | | | | | |
|---------------|----------|-----|---|----|---|
| DATE | | | | | |
| PROJECT NAME | | | | | |
| TYPE | | | | | |
| QTY | | | | | |
| ORDERING CODE | AE-DC-FX | -16 | - | 90 | - |

PRODUCT DIMENSION

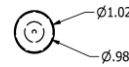
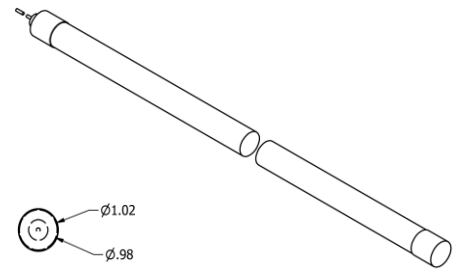
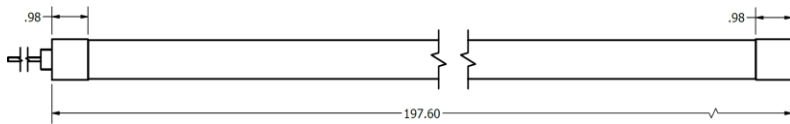
AE-DC-FX-16-XX-90-AL

Aluminum end cap

Manual Soldering



Cable straight through



LUMENS AT DIFFERENT CCT

| ITEM NUMBER | POWER (W/FT) | INPUT VOLTAGE | CCT | LUMEN (LM/FT) |
|------------------|--------------|---------------|-------|---------------|
| AE-DC-FX-16-3090 | 6W/FT | 120-277V | 3000K | 460LM/FT |
| AE-DC-FX-16-3590 | | | 3500K | 483LM/FT |
| AE-DC-FX-16-4090 | | | 4000K | 487LM/FT |

| | | | | | |
|---------------|----------|-----|---|----|---|
| DATE | | | | | |
| PROJECT NAME | | | | | |
| TYPE | | | | | |
| QTY | | | | | |
| ORDERING CODE | AE-DC-FX | -16 | - | 90 | - |

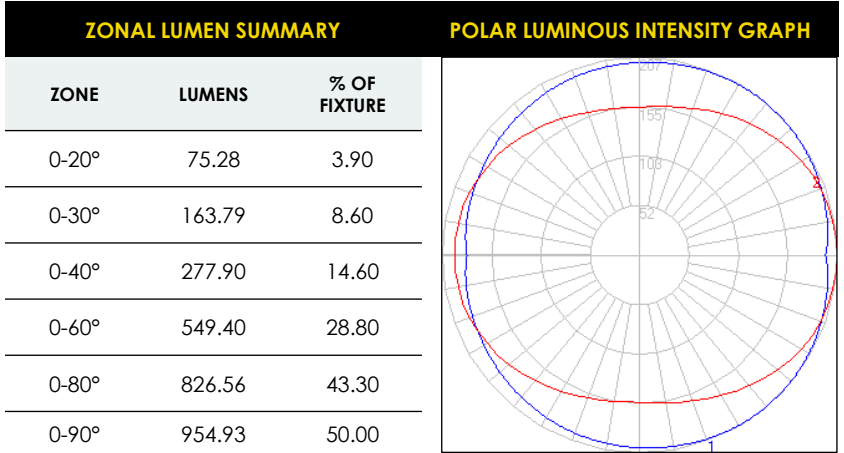
PHOTOMETRIC DATA

AE-DC-FX-16-4090-XX

19 WATTS

~2000lm

4000K CCT



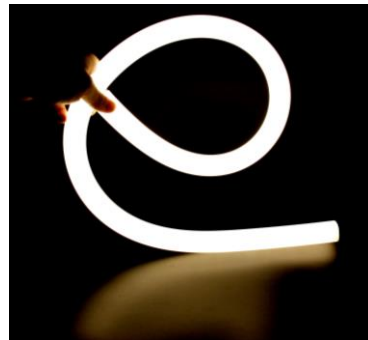
HIGH-STRENGTH CUTTING

Cut using high-strength cutter every 50 mm to avoid cutting the led piece.

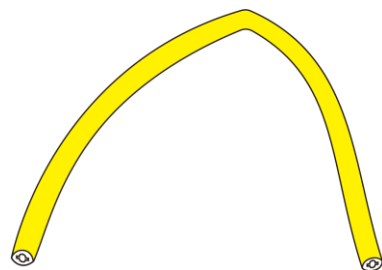
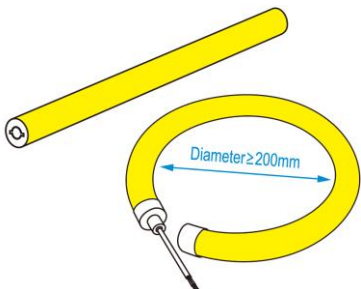


EZ BEND Technology

The metal insert enables Flexa to bend in any desired shape and preserve it. It can be adjusted into various designs and letters.



FREE BENDING REMARKS



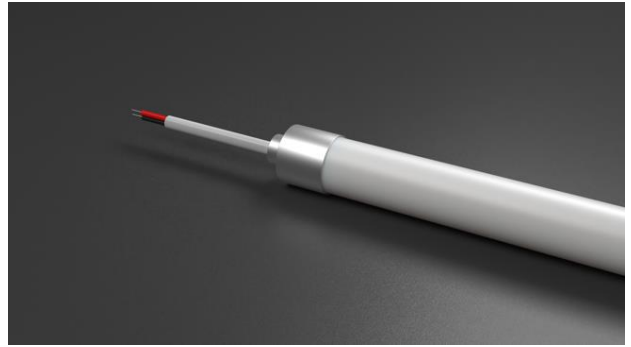
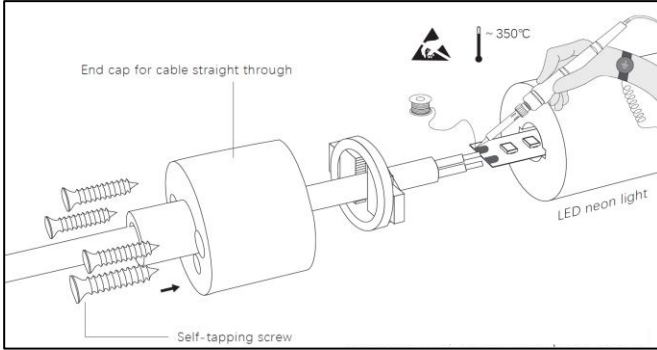
Correct bending direction and bending radius.

Do not twist it or bend reversely.

| | | | | | |
|---------------|----------|-----|---|----|---|
| DATE | | | | | |
| PROJECT NAME | | | | | |
| TYPE | | | | | |
| QTY | | | | | |
| ORDERING CODE | AE-DC-FX | -16 | - | 90 | - |

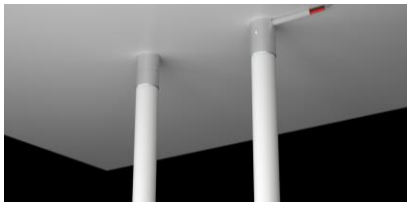
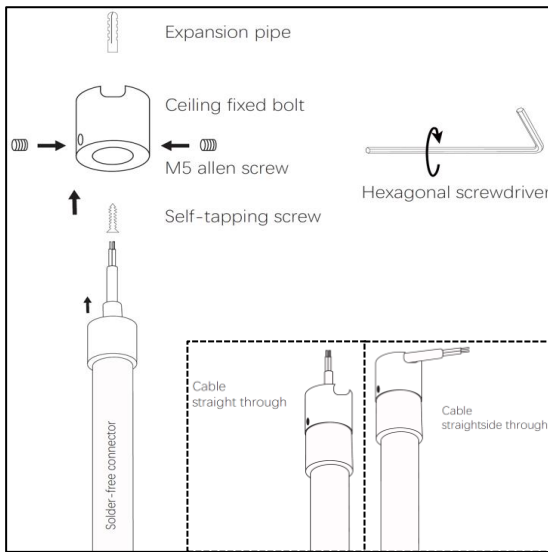
INSTALLATIONS INSTRUCTIONS FOR END CAP AND END CAP ACCESSORIES

CABLE STRAIGHT THROUGH END CAP



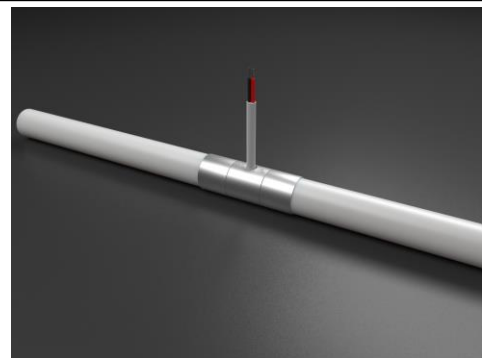
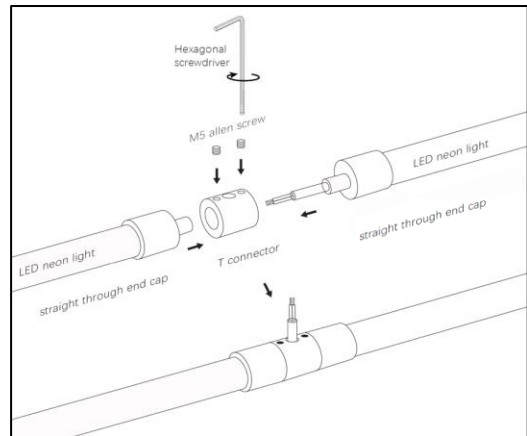
Cables to FPC, be aware of positive and negative anodes, wear electrostatic ring, solder around 3~5 seconds, temperature is no more than 350°C.

CEILING FIXED BOLT



1. Punch expansion pipe into ceiling.
2. Fix ceiling fixed bolt by self-tapping screw.
3. Install cable straight through end cap into ceiling fixed bolt.
4. Use M5 allen screw fix Solder-free connector by hexagonal screwdriver.

T CONNECTOR

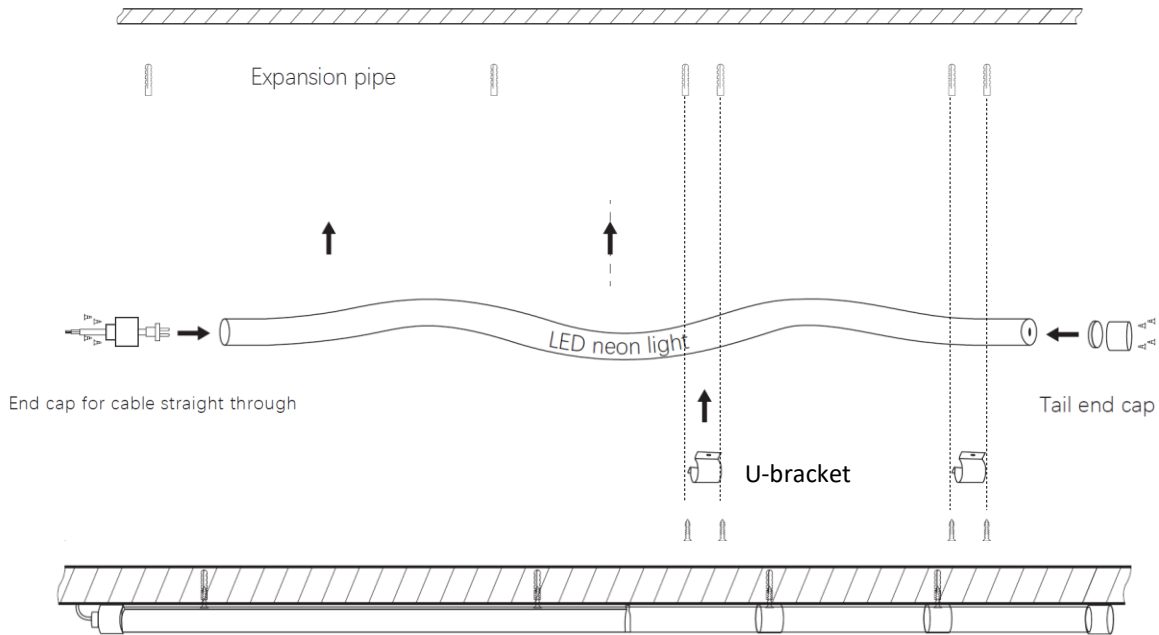


Fix cable straight through end cap with another one to T connector by M5 allen screw.

| | | | | | |
|---------------|----------|-----|---|----|---|
| DATE | | | | | |
| PROJECT NAME | | | | | |
| TYPE | | | | | |
| QTY | | | | | |
| ORDERING CODE | AE-DC-FX | -16 | - | 90 | - |

INSTALLATIONS INSTRUCTIONS

SURFACE MOUNT HORIZONTAL (AE-DC-FX-16-XX90-H-SMT)

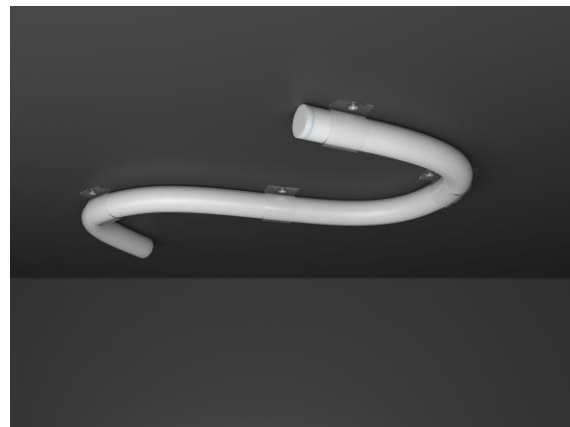


Accessories needed:

| Description | Part number | Quantity |
|------------------------------------|--------------------------------|----------|
| End cap for cable straight through | DC-FX-ACC-ALEC-STRAIGH THROUGH | 1 |
| Tail end cap | FX-ACC-ALEC-TAIL | 1 |
| U bracket for ceiling mounted | FX-ACC-IN-U BRACKET | 6 |

You can add end cap for cable side through (FX-ACC-EC-AL4) to hide the wire in the ceiling

1. Punch expansion pipe into ceiling.
2. Install End cap for cable straight through and tail end cap onto neon light.
3. Install neon light into R clip, Fix R clip onto ceiling by self-tapping screw.



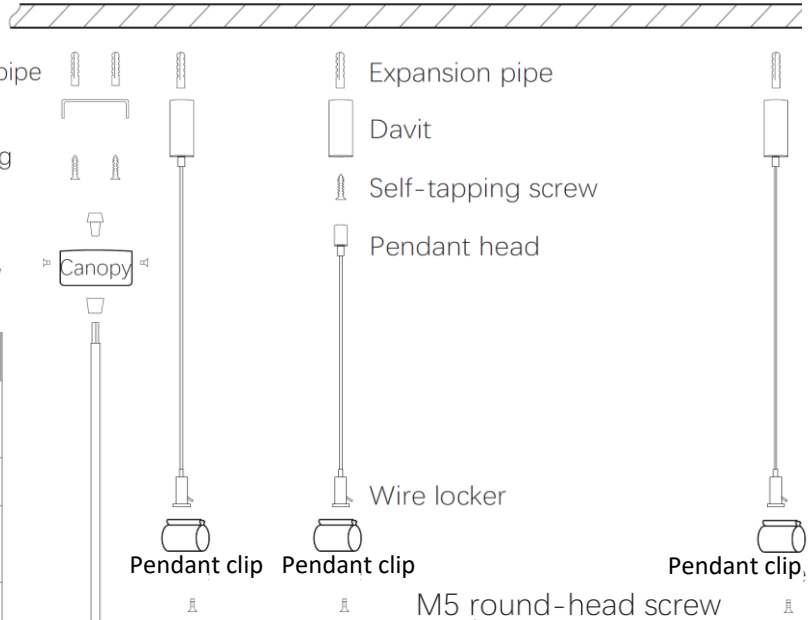
| | | | | | |
|---------------|----------|-----|---|----|---|
| DATE | | | | | |
| PROJECT NAME | | | | | |
| TYPE | | | | | |
| QTY | | | | | |
| ORDERING CODE | AE-DC-FX | -16 | - | 90 | - |

INSTALLATIONS INSTRUCTIONS

SUSPENDED HORIZONTAL (AE-DC-FX-16-XX90-H-AIR)



- Expansion pipe
- Bracket
- Self-tapping screw
- Wire locker
- Fixed screw

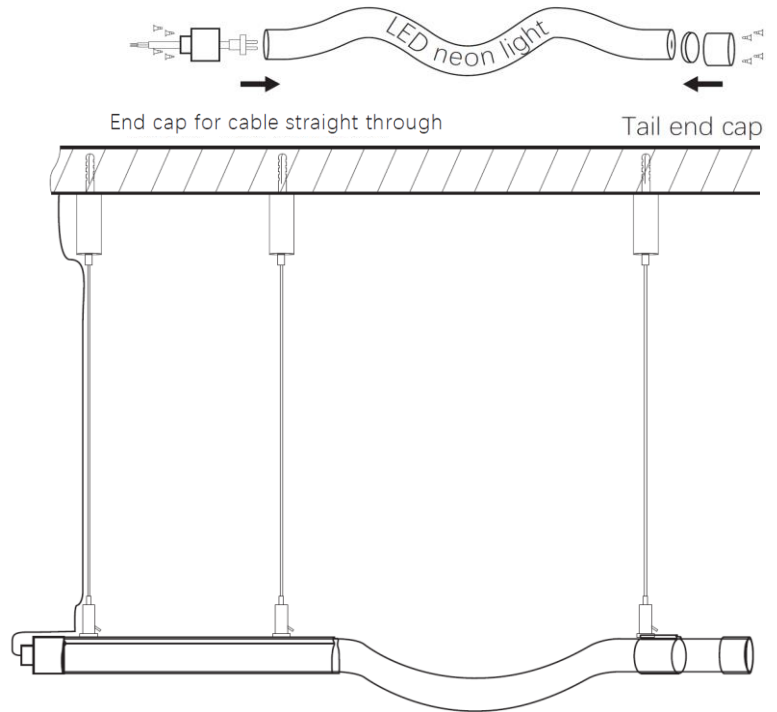


Accessories needed:

| Description | Part number | Quantity |
|------------------------------------|--------------------------------|----------|
| End cap for cable straight through | DC-FX-ACC-ALEC-STRAIGH THROUGH | 1 |
| Tail end cap | FX-ACC-ALEC-TAIL | 1 |
| Pendant clip and suspension wire | FX-ACC-IN-SUS-CLIP-WIRE | 6 |
| Driver Box | FX-ACC-IN--DRIVER BOX | 1 |

You can add end cap for cable side through (FX-ACC-EC-AL4), so the cable can pass side way.
 You can use the canopy is for the power cord (optional).

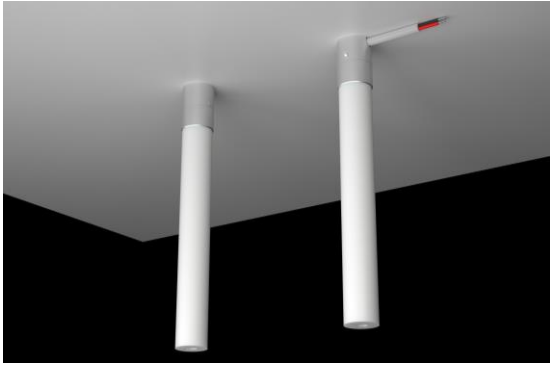
1. Punch expansion pipe into ceiling.
2. Fix davit by self-tapping screw, install pendant head into davit.
3. Fix pendant clip to the suspension wire by M5 screw.
4. Install End cap for cable straight through and tail end cap onto neon light.
5. Install neon light into the clips and close it.



| | | | | | |
|---------------|----------|-----|---|----|---|
| DATE | | | | | |
| PROJECT NAME | | | | | |
| TYPE | | | | | |
| QTY | | | | | |
| ORDERING CODE | AE-DC-FX | -16 | - | 90 | - |

INSTALLATIONS INSTRUCTIONS

SURFACE MOUNT VERTICAL I-SHAPE AND U-SHAPE



The wire can be passed through the wall (hidden) as shown for the left fixture or it can pass along the ceiling as shown for the right fixture.

It can be surface mounted vertically in I shape or U shape.

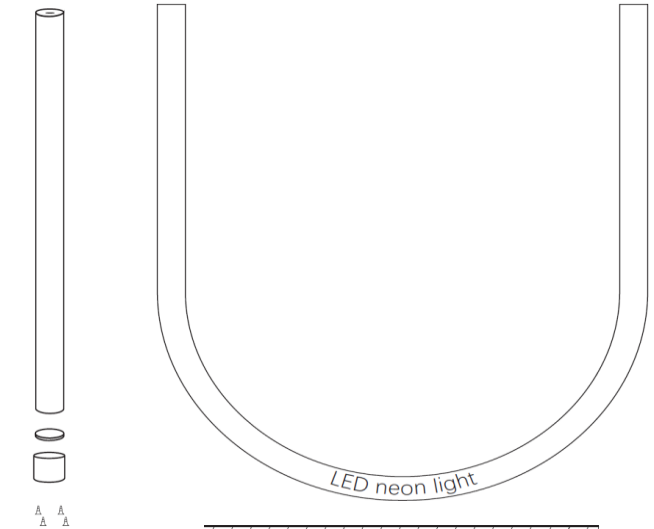
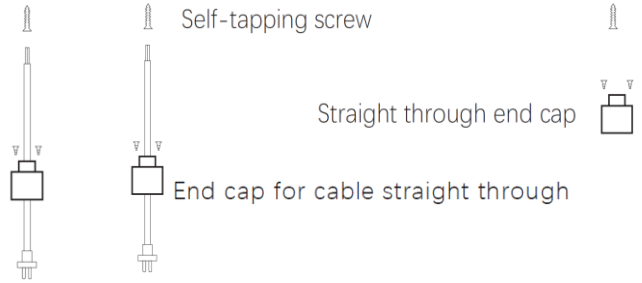
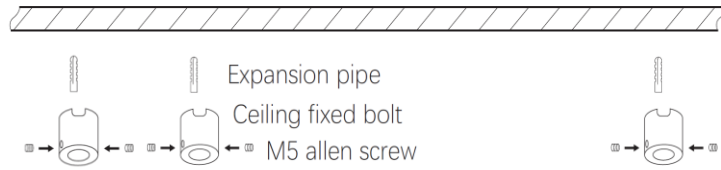
Accessories needed for I-Shape:

| Description | Part number | Quantity |
|---|--------------------------------|----------|
| End cap for cable straight through | DC-FX-ACC-ALEC-STRAIGH THROUGH | 1 |
| Ceiling fixed bolt for cable straight and side through. | FX-ACC-ALEC-CEILING FIXED BOLT | 1 |
| Tail end cap | FX-ACC-ALEC-TAIL | 1 |

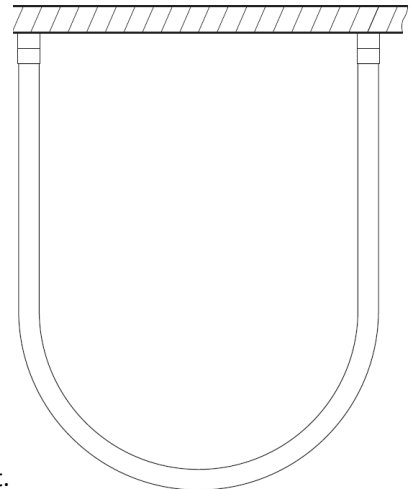
Accessories needed for U-Shape:

| Description | Part number | Quantity |
|---|--------------------------------|----------|
| End cap for cable straight through | DC-FX-ACC-ALEC-STRAIGH THROUGH | 2 |
| Ceiling fixed bolt for cable straight and side through. | FX-ACC-ALEC-CEILING FIXED BOLT | 2 |

1. Punch expansion pipe into ceiling.
2. Install end cap for cable straight through and tail end cap onto neon light.
3. Fix ceiling fixed bolt onto ceiling, cables pass through ceiling fixed bolt.
4. Insert end cap for cable straight through and tail end cap into ceiling fixed bolt.



I-Shape



| | | | | | |
|---------------|----------|-----|---|----|---|
| DATE | | | | | |
| PROJECT NAME | | | | | |
| TYPE | | | | | |
| QTY | | | | | |
| ORDERING CODE | AE-DC-FX | -16 | - | 90 | - |

INSTALLATIONS INSTRUCTIONS

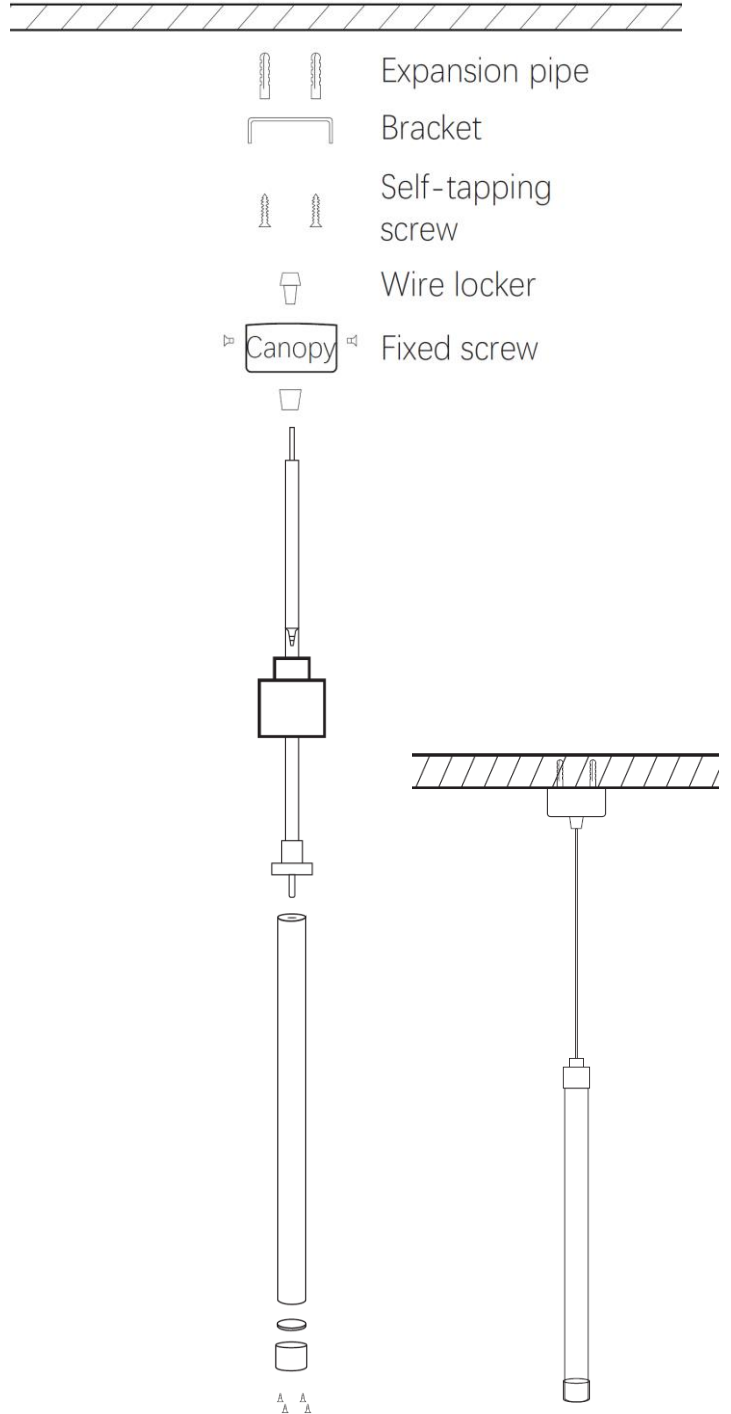
SUSPENDED VERTICAL

The fixture can be suspended vertically through the power cord.

Accessories needed:

| Description | Part number | Quantity |
|------------------------------------|--------------------------------|----------|
| End cap for cable straight through | DC-FX-ACC-ALEC-STRAIGH THROUGH | 1 |
| Tail end cap | FX-ACC-ALEC-TAIL | 1 |
| Canopy for pendant | FX-ACC-IN-CANOPY | 1 |

1. Punch expansion pipe into ceiling.
2. Install end cap for cable straight through and tail end cap onto neon light.
3. Fix bracket onto ceiling by self-tapping screw, fix cables by wire locker, fix the canopy to bracket by fixed screw.



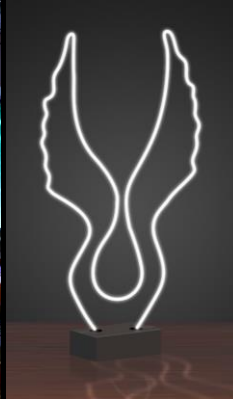
| | | | | | |
|---------------|----------|-----|---|----|---|
| DATE | | | | | |
| PROJECT NAME | | | | | |
| TYPE | | | | | |
| QTY | | | | | |
| ORDERING CODE | AE-DC-FX | -16 | - | 90 | - |

Customized shape and length

Flexa can be cut at any length desired, and because unique ability, it can freely bend into any design and preserve the sleek shape for example you create unique shapes letters or patters, however it not suitable to create uniform design such as straight line or perfect circular, it is difficult to control the metal insert (you can use Flexy for that). Experience unparalleled lighting freedom with our Flexa light.

The following images are examples to show the application for Flexa.

Flexa can be used for unique and unusual designs.



FLEXA

DECORATIVE FLEXIBLE FIXTURE

DECORATIVE FLEXIBLE FIXTURE

| | | | | | |
|---------------|----------|-----|---|----|---|
| DATE | | | | | |
| PROJECT NAME | | | | | |
| TYPE | | | | | |
| QTY | | | | | |
| ORDERING CODE | AE-DC-FX | -16 | - | 90 | - |

OVERVIEW

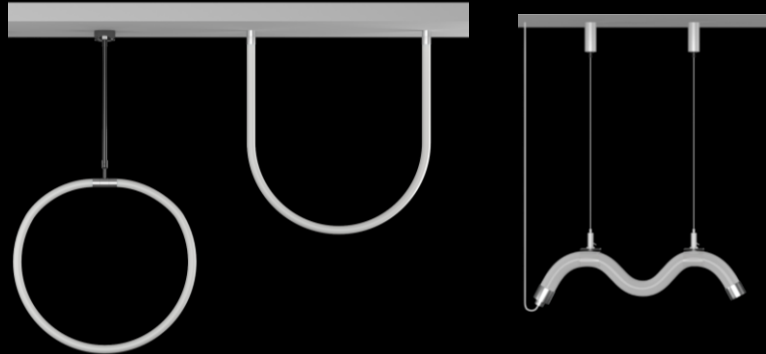
FLEXIBILITY

Can be bent in various forms with a minimum bend radius of 6 inches



MOUNTING

It has variety of mounting options; including horizontal surface or pendant mount, and vertical either surface or pendant, also it can be a mix of any of these mounting options



DISTRIBUTION

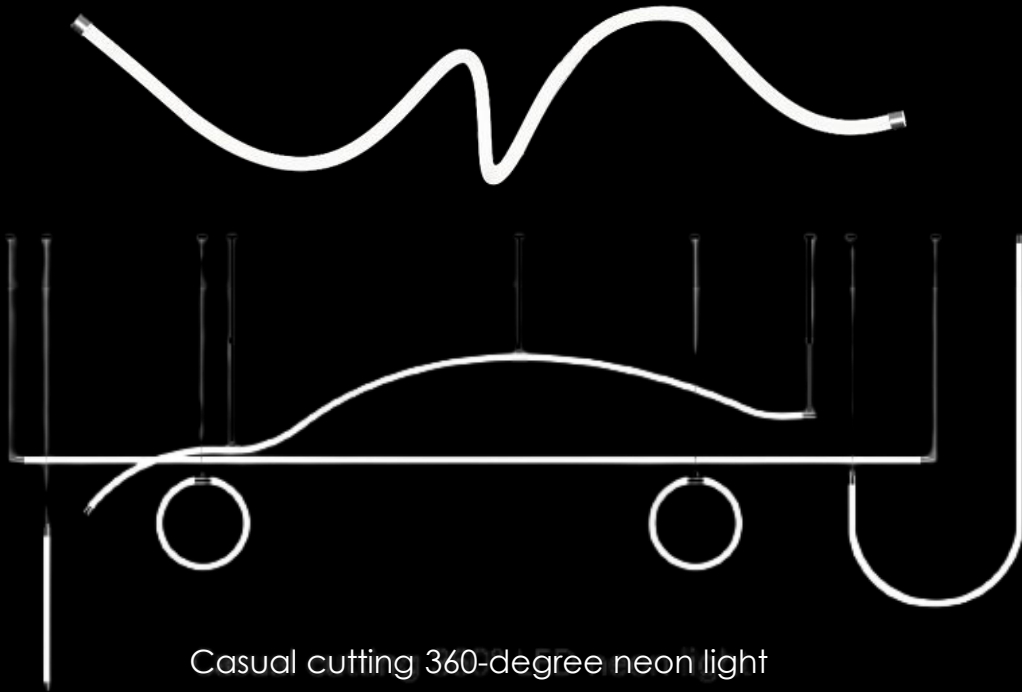
Emitting light 360 degrees ; widely use for artistic lighting space to bring more vivid designs.

EZ BEND TECHNOLOGY

Easily bend to any unique shape and preserve it.

CUSTOMIZABLE

Can be tailored to any length and shape. Experience the freedom in design. Dare to be different. The only limit is your imagination.



Casual cutting 360-degree neon light