

FLEXA

DECORATIVE FLEXIBLE FIXTURE

Decorative Lighting

Flexa is a revolutionary lighting solutions designed to illuminate spaces with unparalleled adaptability. Engineered with precision, this innovative lighting system boasts 360-degree light dispersion. This fixture comes standard with an insert enabling it to be bent into various shapes, while maintaining its sleek and sophisticated design. It has various mounting options: Surface Mount, and Pendant either vertically or horizontally. Furthermore, it can withstand any pattern and maintain its uniform look and distribution. FLEXA is ideal for any space where differentiation and uniqueness is key!

eralux®



DATE					
PROJECT NAME					
TYPE					
QTY					
ORDERING CODE	AE-DC-FX	-16	-	90	-

OPERATING & ELECTRICAL

INPUT VOLTAGE	120-277V
POWER FACTOR	0.9
DIMMING	No dimming
TOTAL HARMONIC DISTORTION (THD)	<20%

PERFORMANCE

LUMENS PER FEET	~500lm/FT
POWER	~6W/FT
BEAM ANGLE	360°
FEATURES	Hold Shape (has metal rod inside) RGB Option

MECHANICAL & HOUSING

CONSTRUCTION	Silicone body Metal end cap
FINISH	Silver (End Caps) White Silicone (Body)
POWER SUPPLY	75W DC Driver
LED BOARD	LED Array
FREE BEND TO PATTERNS	Comes with metal insert that enables the fixture to withstand various shape

APPLICATION CONDITION

AMBIENT TEMPERATURE RANGE	-20°C to 45°C
STORAGE TEMPERATURE	-20°C to 60°C
PROTECTION	IP20 IK 08 FLAME RESISTANCE Anti-UV Grade : UVA-340

COMPATIBLE MOUNTING

MOUNTING	Surface Pendant
----------	--------------------

WARRANTY

SYSTEM WARRANTY – 5 YEARS

Eralux will warrant defective drivers, LEDs and boards for 5 years from the date of purchase. This warranty is valid only if the fixture is installed and used as per installation instructions and specifications. If a defect is present, Eralux will send drivers and boards at no fee with a thorough replacement instructions along with instructions on the return of the defective parts back to Eralux.

LUMEN MAINTENANCE – L85 at 50,000 hours

Rated for 85% initial lumen output at 50,000 hours of operation, operated at 25°C ambient temperature; per guidelines published by the Illuminating Engineering Society (IES).

DATE	
PROJECT NAME	
TYPE	
QTY	
ORDERING CODE	AE-DC-FX -16 - 90 -

ORDERING GUIDE FOR 16FT FLEXA

EXAMPLE: AE-DC-FX-16-3090-H-AIR

FIXTURE FAMILY	LENGTH	CCT	CRI	MOUNTING
AE-DC-FX	-	-	90	-
AE-DC-FX ERALUX Flexa Decorative free bend to patterns Flexible Fixture	-16 16 Feet 6W/FT 483LM/FT	-30 3000K CCT	-90 90 CRI	-H-SMT Horizontal surface mount
		-35 3500K CCT		-H-AIR Horizontal pendant mount
		-40 4000K CCT		-H-AIR-LINK Horizontal pendant mount
		-RGB Red, Green, and blue lights controlled by remote		-CUSTOM Comes with just one driver and driver box, this is for custom mounting, refer to page 5

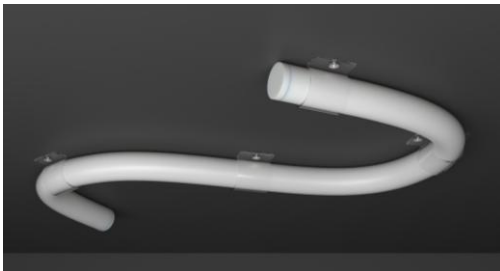
Power cord is 15FT and suspension wire is 6FT.

The ordering guide for custom mounting option is at page 5.

MOUNTING OPTIONS

AE-DC-FX-16-XX90-H-SMT

Horizontal surface mount

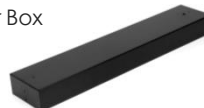


ACCESSORIES

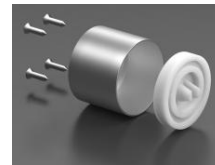
U-Bracket



Driver Box



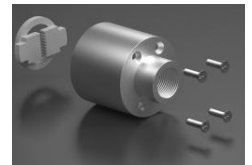
Tail end cap



Driver



Straight through end cap

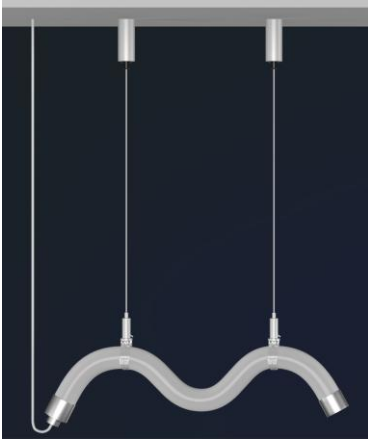


DATE					
PROJECT NAME					
TYPE					
QTY					
ORDERING CODE	AE-DC-FX	-16	-	90	-

MOUNTING OPTIONS

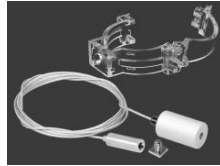
AE-DC-FX-16-XX90-H-AIR

Horizontal pendant mount

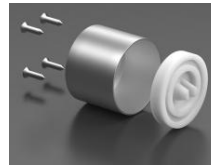


ACCESSORIES

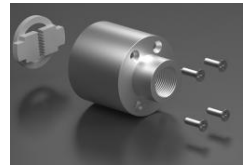
Suspension kit



Tail end cap



Straight through end cap



Side through end cap



Driver Box



Driver

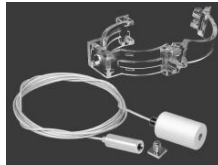


AE-DC-FX-16-XX90-H-AIR-LINK

Horizontal pendant mount with link

ACCESSORIES

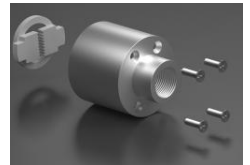
Suspension kit



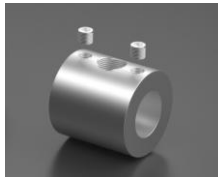
Side through end cap



Straight through end cap



T connector



Driver Box



Driver

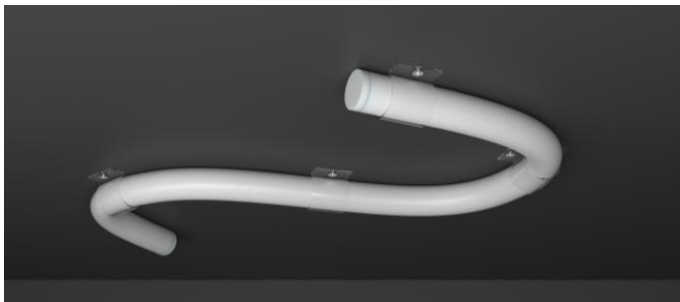
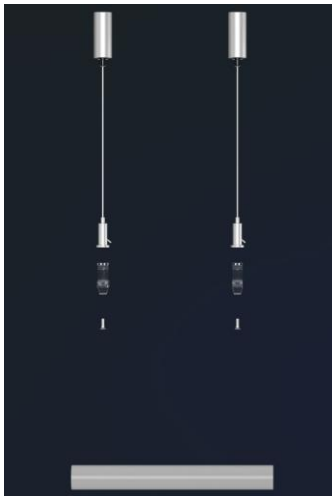
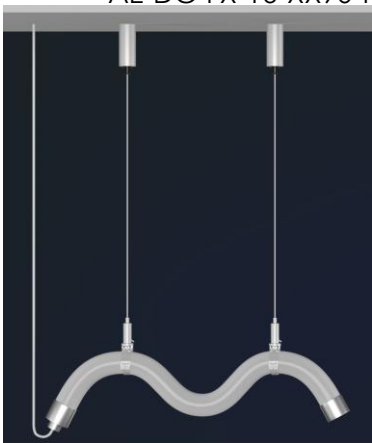


DATE	
PROJECT NAME	
TYPE	
QTY	
ORDERING CODE	AE-DC-FX -16 - 90 -

MOUNTING OPTIONS BOM

There are unlimited mounting possibilities for Flexa, and they can be divided under two main options surface mount and suspended either vertical or horizontal. You can add more accessories

Table below shows the BOM for each part number that represents different mounting option.

MOUNTING OPTION	PART NUMBER	MATERIALS
	Horizontal surface mount AE-DC-FX-16-XX90-H-SMT	1: 16 FT Flexy 1: Driver 1: Driver box 1: End cap straight through 1: Tail end cap 6: U-bracket The U-Bracket is dependent on the length and the shape of Flexy. 3FT=1 U-Bracket or 1 curve = 1 U-bracket. Order more if needed
	Horizontal pendant mount AE-DC-FX-16-XX90-H-AIR	1: 16 FT Flexa 1: Driver 1: Driver box 1: End cap straight through 1: Tail end cap 1: Side through end cap 6: Suspension kit (pendant clips and suspension wires 6FT) The suspension kit is dependent on the length and the shape of Flexa. 3FT=1 Suspension kit. or 1 curve = 1 Suspension kit. Order more if needed
	Horizontal pendant mount with link AE-DC-FX-16-XX90-H-AIR-LINK This is used to connect two or more Flexa with each other.	1: 16 FT Flexy 1: Driver 1: Driver box 2: End cap straight through 1: T connector 1: Side through end cap 6: Suspension kit (pendant clips and suspension wires 6FT)

DATE	
PROJECT NAME	
TYPE	
QTY	
ORDERING CODE	AE-DC-FX -16 - 90 -

ORDERING GUIDE ACCESSORIES

For the custom choice you will get XXFT Flexa with driver, 1 end cap straight through, 1 tail end cap, and you can add the accessories needed to create the desired design from the tables below. Or you can send us the design you want, and we will build the BOM.

End cap accessories

ACCESSORY FAMILY	PART	QUANTITY
DC-FX-ACC-ALEC	-	
DC-FX-ACC-ALEC End cap for Flexa	-STRAIGH THROUGH Straight through end cap	
	-TAIL Tail end cap	
	-TCONNECTOR T connector	
	-CEILING FIXED BOLT Ceiling fixed bolt	
	-SIDE THROUGH End cap for cable side through	

Installation accessories


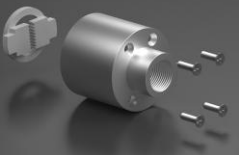


ACCESSORY FAMILY	PART	QUANTITY
DC-FX-ACC-IN	-	
DC-FX-ACC-IN Flexa installation accessories for horizontal and vertical	-U BRACKET U bracket for ceiling mount	
	-SUS-CLIP-WIRE Pendant clip and suspension wire	
	-CANOPY Canopy	
	-DRIVER BOX Driver box To hide the driver	

More information about the accessories are in next pages.

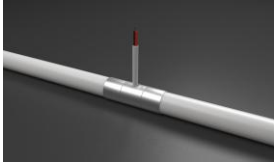
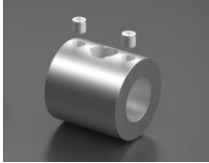
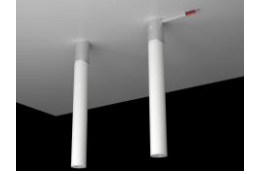



DATE	
PROJECT NAME	
TYPE	
QTY	
ORDERING CODE	AE-DC-FX -16 - 90 -

ACCESSORIES

Aluminum end cap, there are two end cap:

IMAGE	DIAGRAM	DESCRIPTION	ITEM NUMBER
		End cap for cable straight through. Used one the side where the power cord is. Φ 25.8 X L 33mm	DC-FX-ACC-ALEC-STRAIGH THROUGH
		Tail end cap. Used on the other side of the Flexa. Φ 25.8 X L 25mm	DC-FX-ACC-ALEC-TAIL




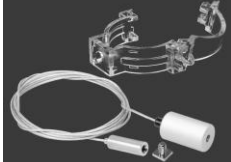




Aluminum end cap accessories, there are three accessories that can be added to end cap.

IMAGE	DIAGRAM	DESCRIPTION	ITEM NUMBER
		T connector Used to connect two Flexa with each other through 2 straight through end cap. Φ 25.8 X L 33mm	DC-FX-ACC-ALEC-TCONNECTOR
		Ceiling fixed bolt for cable straight and side through. Used for surface mounting, It is connected to straight through end cap. Φ 25.8 X L 25mm	DC-FX-ACC-ALEC-CEILING FIXED BOLT
		End cap for cable side through. It is connected to straight through end cap to pass the cord sideways. Φ 29.8 X L 25mm	DC-FX-ACC-ALEC-SIDE THROUGH

DATE	
PROJECT NAME	
TYPE	
QTY	
ORDERING CODE	AE-DC-FX -16 - 90 -

ACCESSORIES MOUNTING ACCESSORIES

In the table below are different types for accessories needed for installation of Flexa.

IMAGE	ACCESSORY	DESCRIPTION	ITEM NUMBER
		U bracket for ceiling mounted The U-Bracket is dependent on the length of Flexa 3FT=1 U-Bracket	DC-FX-ACC-IN-U BRACKET
		Pendant clip and suspension wire (6ft) for pendant mounting The suspension kit is dependent on the length of Flexa 3FT=1 suspensions kit	DC-FX-ACC-IN-SUS-CLIP-WIRE
		Canopy for pendant	DC-FX-ACC-IN-CANOPY
		Driver box. Used to install the driver inside it.	DC-FX-ACC-IN-DRIVER BOX

Driver

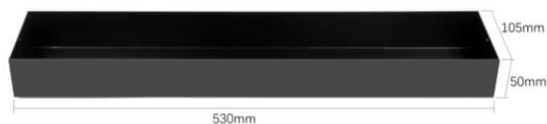
The driver used is **ELG-75-24A**, one driver needed every 16FT.

	Output
DC Voltage	24V
Rated current	3.15A
Rated power	75.6W



DRIVER BOX

The driver box is a housing which can be surface mounted to hide the driver next to the Flexa. It can be order separately.



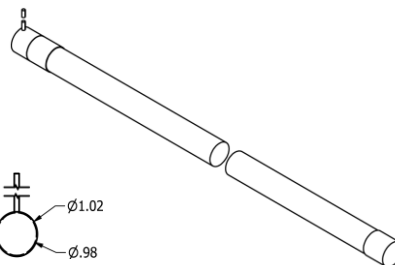
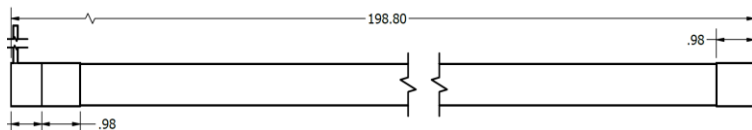
DATE	
PROJECT NAME	
TYPE	
QTY	
ORDERING CODE	AE-DC-FX -16 - 90 -

PRODUCT DIMENSION

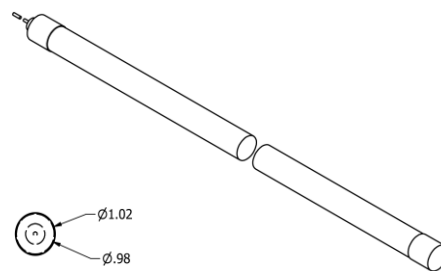
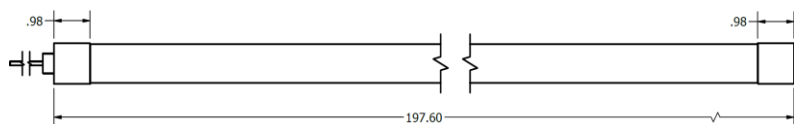
AE-DC-FX-16-XX-90-AL

Aluminum end cap

Manual Soldering



Cable straight through



LUMENS AT DIFFERENT CCT

ITEM NUMBER	POWER (W/FT)	INPUT VOLTAGE	CCT	LUMEN (LM/FT)
AE-DC-FX-16-3090	6W/FT	120-277V	3000K	460LM/FT
AE-DC-FX-16-3590			3500K	483LM/FT
AE-DC-FX-16-4090			4000K	487LM/FT

PHOTOMETRIC DATA

AE-DC-FX-16-4090-XX

19 WATTS

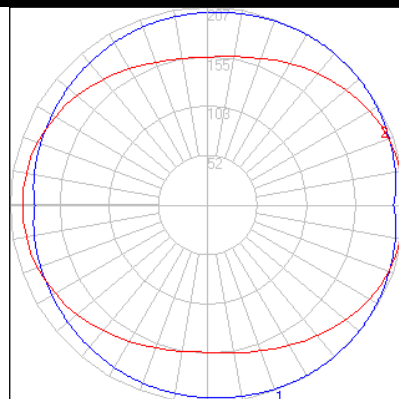
~2000lm

4000K CCT

ZONAL LUMEN SUMMARY

ZONE	LUMENS	% OF FIXTURE
0-20°	75.28	3.90
0-30°	163.79	8.60
0-40°	277.90	14.60
0-60°	549.40	28.80
0-80°	826.56	43.30
0-90°	954.93	50.00

POLAR LUMINOUS INTENSITY GRAPH



HIGH-STRENGTH CUTTING

Cut using high-strength cutter every 50 mm to avoid cutting the led piece.

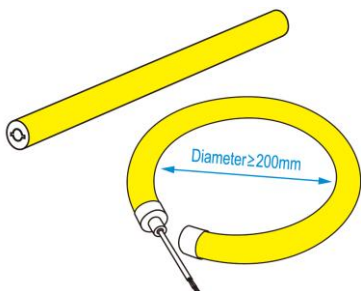


EZ BEND Technology

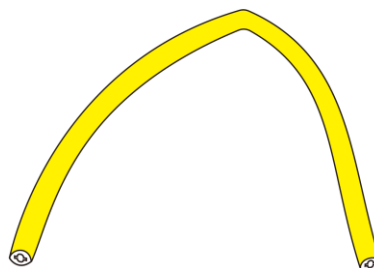
The metal insert enables Flexa to bend in any desired shape and preserve it. It can be adjusted into various designs and letters.



FREE BENDING REMARKS



Correct bending direction and bending radius.



Do not twist it or bend reversely.

DATE					
PROJECT NAME					
TYPE					
QTY					
ORDERING CODE	AE-DC-FX	-16	-	90	-

RGB

- Apply to RGB LED controller.
- Ultra sensitive color adjustment touch wheel.
- Independent dimming function of each R, G, B, W channel to achieve millions of colors.
- Each remote can match one or more receiver.



: Short press turn on/off all zone light.



: Touch to change current zone static RGB color.

1 2 3 4

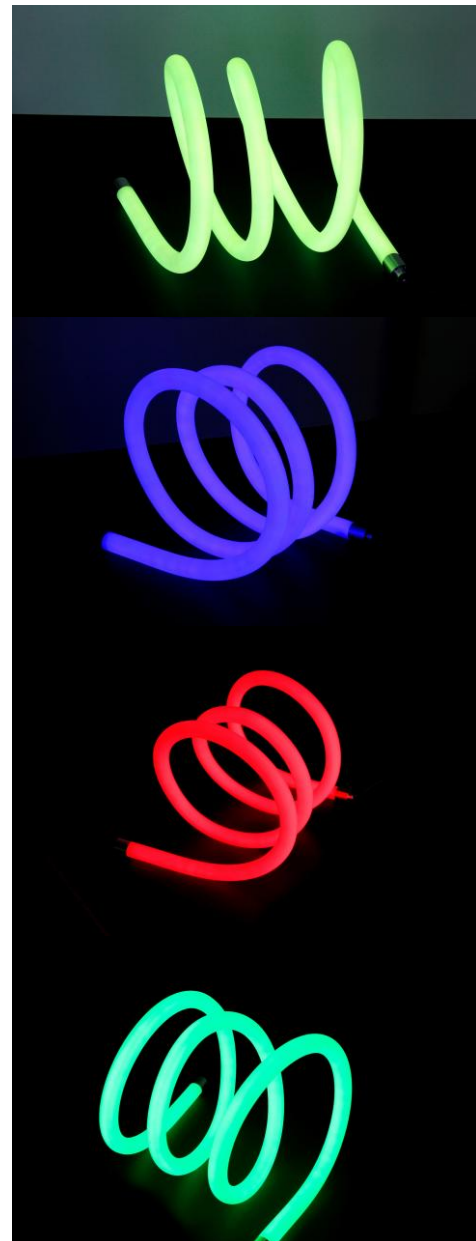
: Short press select and turn on zone light,
long press 2s turn off zone light.
Short press multiple zone key fastly,
will select multiple zone synchronously.

R G B

: Short press get red, green or blue color directly.
long press 1-6s adjust R/G/B brightness continuously
to achieve millions of colors.



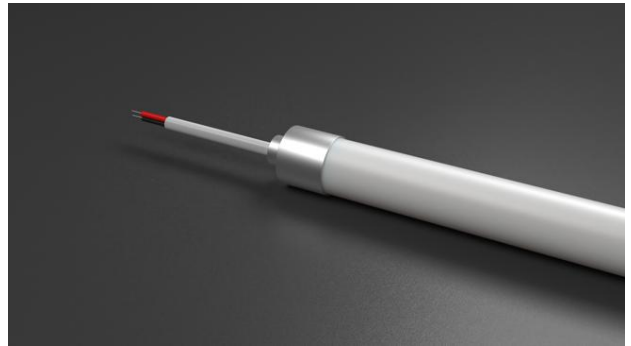
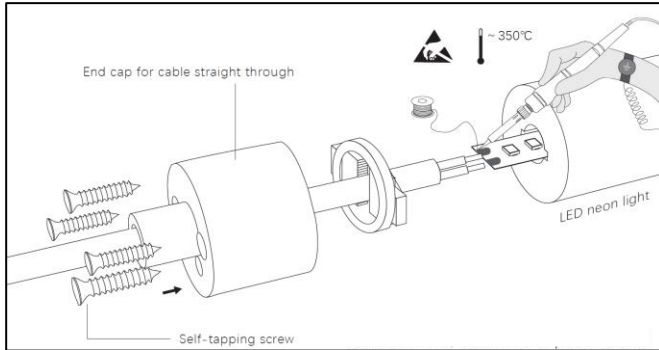
: Adjust dynamic mode for current selected zone,
Short press run next dynamic mode, long press 2s run mode-cycle.



DATE	
PROJECT NAME	
TYPE	
QTY	
ORDERING CODE	AE-DC-FX -16 - 90 -

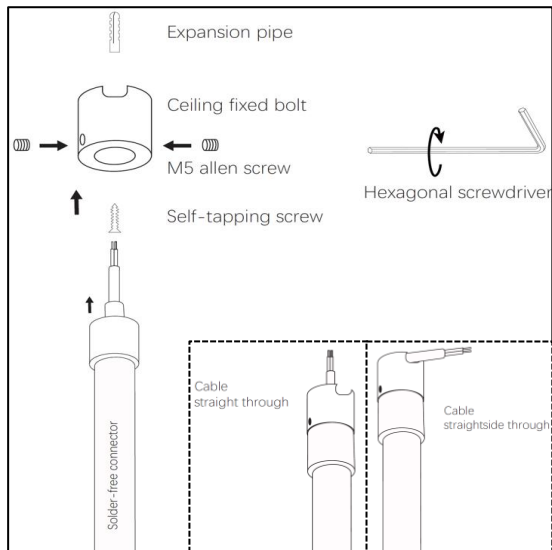
INSTALLATIONS INSTRUCTIONS FOR END CAP AND END CAP ACCESSORIES

CABLE STRAIGHT THROUGH END CAP



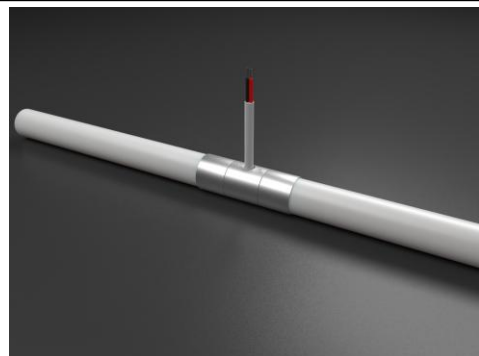
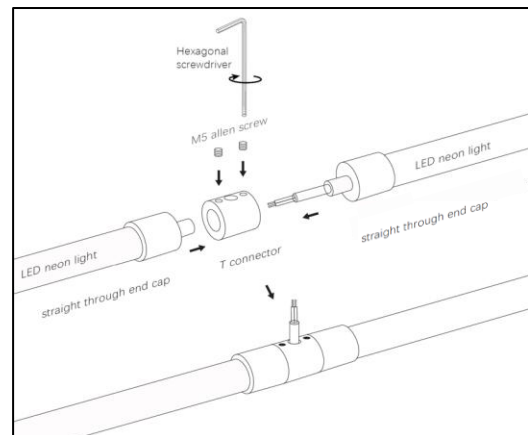
Cables to FPC, be aware of positive and negative anodes, wear electrostatic ring, solder around 3~5 seconds, temperature is no more than 350°C.

CEILING FIXED BOLT



1. Punch expansion pipe into ceiling.
2. Fix ceiling fixed bolt by self-tapping screw.
3. Install cable straight through end cap into ceiling fixed bolt.
4. Use M5 allen screw fix Solder-free connector by hexagonal screwdriver.

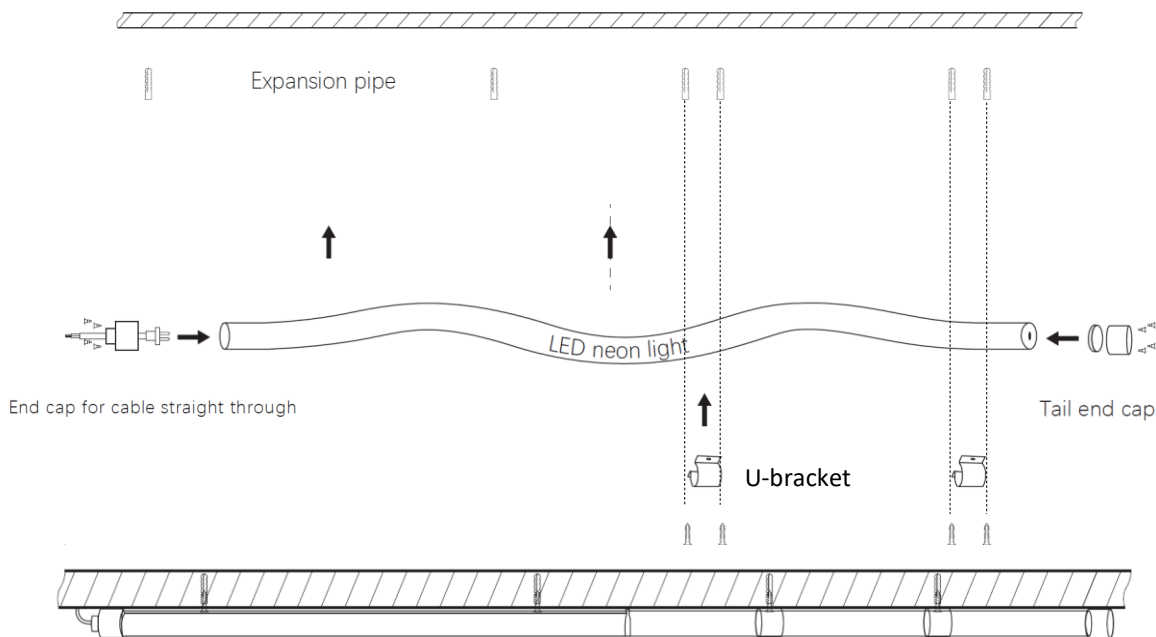
T CONNECTOR



Fix cable straight through end cap with another one to T connector by M5 allen screw.

INSTALLATIONS INSTRUCTIONS

SURFACE MOUNT HORIZONTAL (AE-DC-FX-16-XX90-H-SMT)

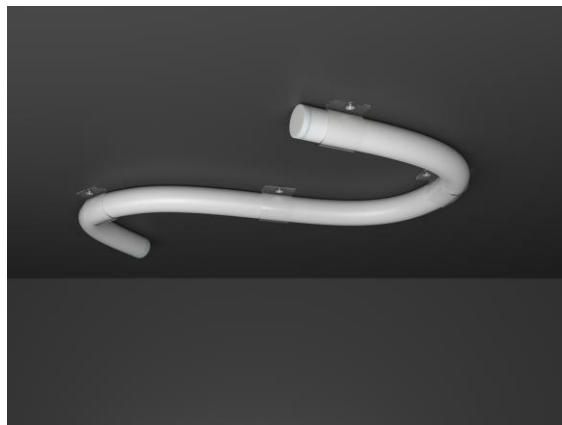


Accessories needed:

Description	Part number	Quantity
End cap for cable straight through	DC-FX-ACC-ALEC-STRAIGH THROUGH	1
Tail end cap	FX-ACC-ALEC-TAIL	1
U bracket for ceiling mounted	FX-ACC-IN-U BRACKET	6

You can add end cap for cable side through (FX-ACC-EC-AL4) to hide the wire in the ceiling

1. Punch expansion pipe into ceiling.
2. Install End cap for cable straight through and tail end cap onto neon light.
3. Install neon light into R clip, Fix R clip onto ceiling by self-tapping screw.



INSTALLATIONS INSTRUCTIONS

SUSPENDED HORIZONTAL (AE-DC-FX-16-XX90-H-AIR)



Expansion pipe
Bracket
Self-tapping screw
Wire locker
Fixed screw

Expansion pipe
Davit
Self-tapping screw
Pendant head

Wire locker

Pendant clip Pendant clip

Pendant clip

M5 round-head screw

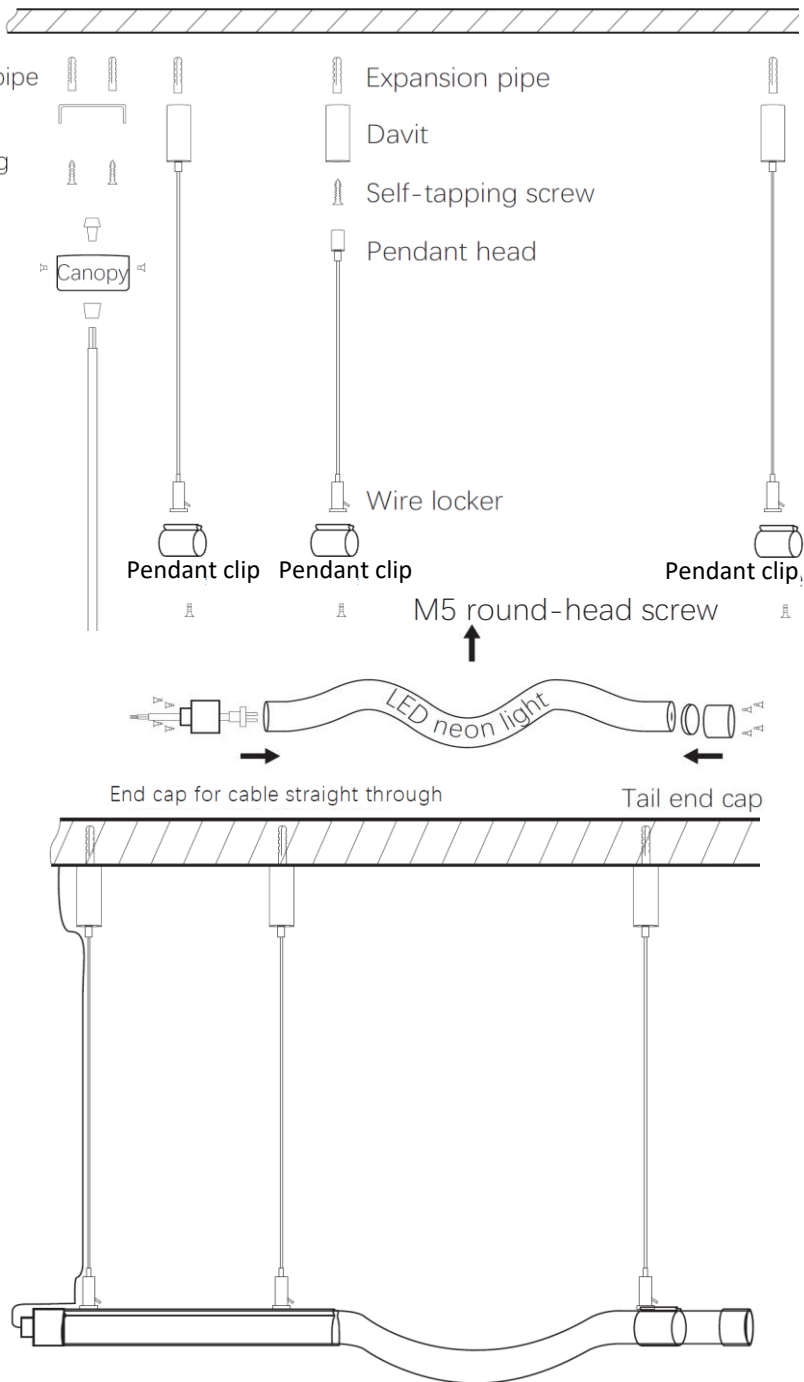
Accessories needed:

Description	Part number	Quantity
End cap for cable straight through	DC-FX-ACC-ALEC-STRAIGH THROUGH	1
Tail end cap	FX-ACC-ALEC-TAIL	1
Pendant clip and suspension wire	FX-ACC-IN-SUS-CLIP-WIRE	6
Driver Box	FX-ACC-IN--DRIVER BOX	1

You can add end cap for cable side through (FX-ACC-EC-AL4), so the cable can pass side way.

You can use the canopy is for the power cord (optional).

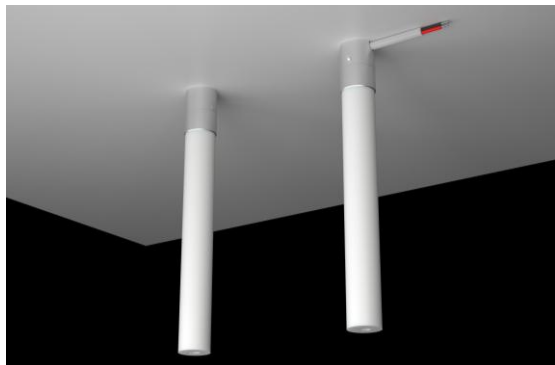
1. Punch expansion pipe into ceiling.
2. Fix davit by self-tapping screw, install pendant head into davit.
3. Fix pendant clip to the suspension wire by M5 screw.
4. Install End cap for cable straight through and tail end cap onto neon light.
5. Install neon light into the clips and close it.



DATE	
PROJECT NAME	
TYPE	
QTY	
ORDERING CODE	AE-DC-FX -16 - 90 -

INSTALLATIONS INSTRUCTIONS

SURFACE MOUNT VERTICAL I-SHAPE AND U-SHAPE



The wire can be passed through the wall (hidden) as shown for the left fixture or it can pass along the ceiling as shown for the right fixture.

It can be surface mounted vertically in I shape or U shape.

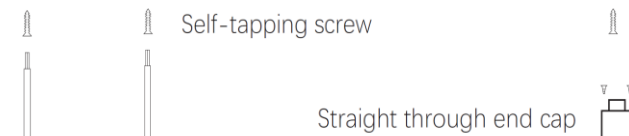
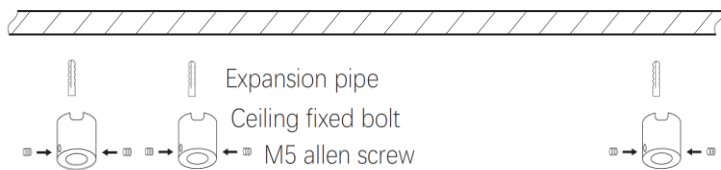
Accessories needed for I-Shape:

Description	Part number	Quantity
End cap for cable straight through	DC-FX-ACC-ALEC-STRAIGH THROUGH	1
Ceiling fixed bolt for cable straight and side through.	FX-ACC-ALEC-CEILING FIXED BOLT	1
Tail end cap	FX-ACC-ALEC-TAIL	1

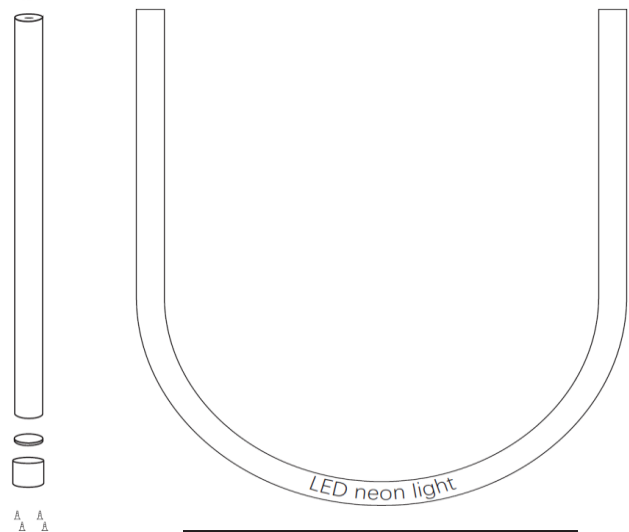
Accessories needed for U-Shape:

Description	Part number	Quantity
End cap for cable straight through	DC-FX-ACC-ALEC-STRAIGH THROUGH	2
Ceiling fixed bolt for cable straight and side through.	FX-ACC-ALEC-CEILING FIXED BOLT	2

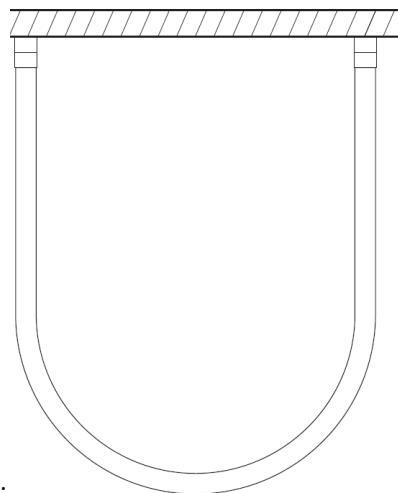
1. Punch expansion pipe into ceiling.
2. Install end cap for cable straight through and tail end cap onto neon light.
3. Fix ceiling fixed bolt onto ceiling, cables pass through ceiling fixed bolt.
4. Insert end cap for cable straight through and tail end cap into ceiling fixed bolt.



End cap for cable straight through



I-Shape



DATE	
PROJECT NAME	
TYPE	
QTY	
ORDERING CODE	AE-DC-FX -16 - 90 -

INSTALLATIONS INSTRUCTIONS

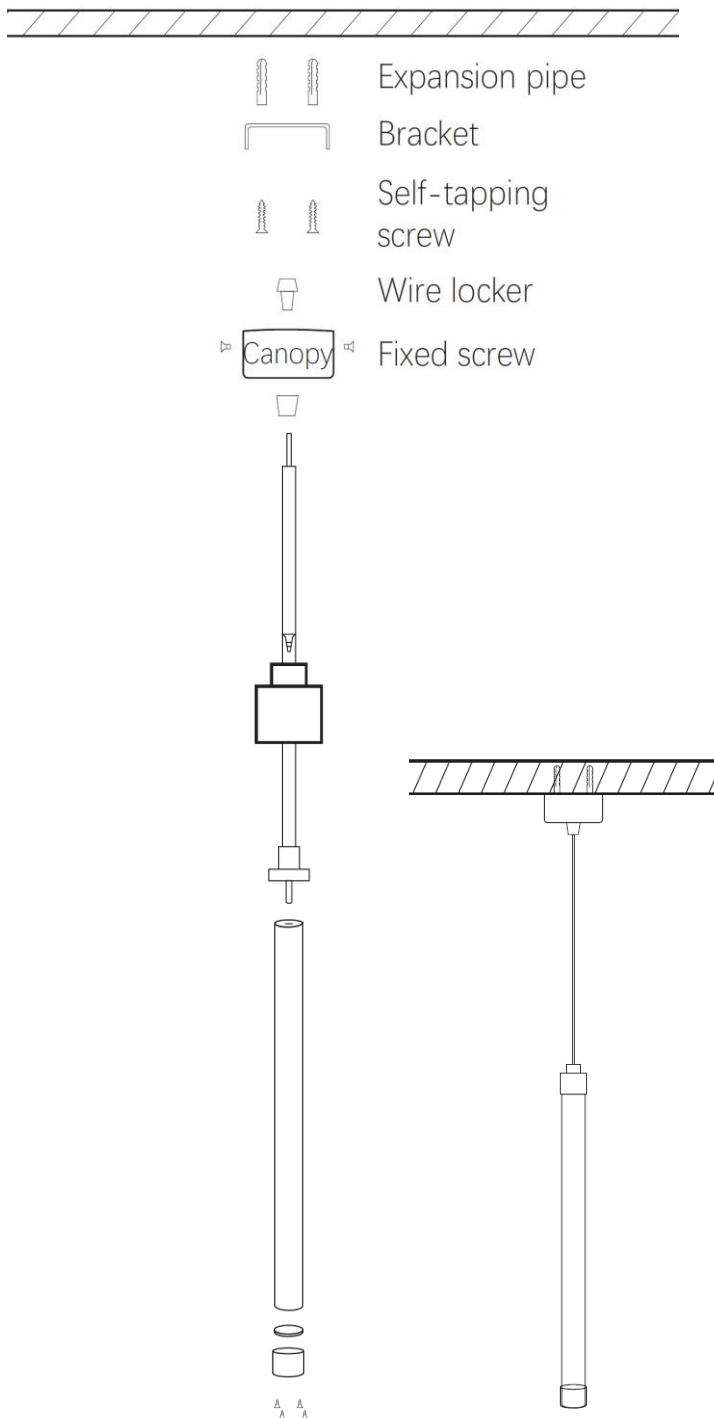
SUSPENDED VERTICAL

The fixture can be suspended vertically through the power cord.

Accessories needed:

Description	Part number	Quantity
End cap for cable straight through	DC-FX-ACC-ALEC-STRAIGH THROUGH	1
Tail end cap	FX-ACC-ALEC-TAIL	1
Canopy for pendant	FX-ACC-IN-CANOPY	1

1. Punch expansion pipe into ceiling.
2. Install end cap for cable straight through and tail end cap onto neon light.
3. Fix bracket onto ceiling by self-tapping screw, fix cables by wire locker, fix the canopy to bracket by fixed screw.



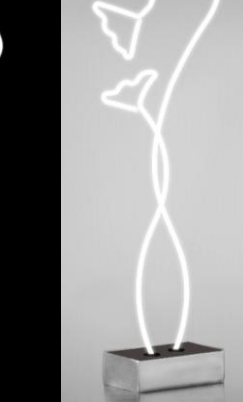
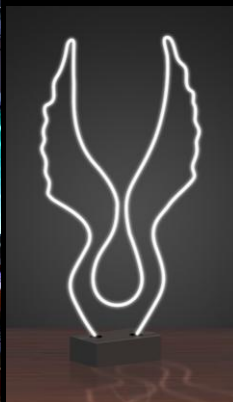
DATE					
PROJECT NAME					
TYPE					
QTY					
ORDERING CODE	AE-DC-FX	-16	-	90	-

Customized shape and length

Flexa can be cut at any length desired, and because unique ability, it can freely bend into any design and preserve the sleek shape for example you create unique shapes letters or patters, however it not suitable to create uniform design such as straight line or perfect circular, it is difficult to control the metal insert (you can use Flexy for that). Experience unparalleled lighting freedom with our Flexa light.

The following images are examples to show the application for Flexa.

Flexa can be used for unique and unusual designs.



FLEXA

DECORATIVE FLEXIBLE FIXTURE

DECORATIVE FLEXIBLE FIXTURE

DATE	
PROJECT NAME	
TYPE	
QTY	
ORDERING CODE	AE-DC-FX -16 - 90 -

OVERVIEW

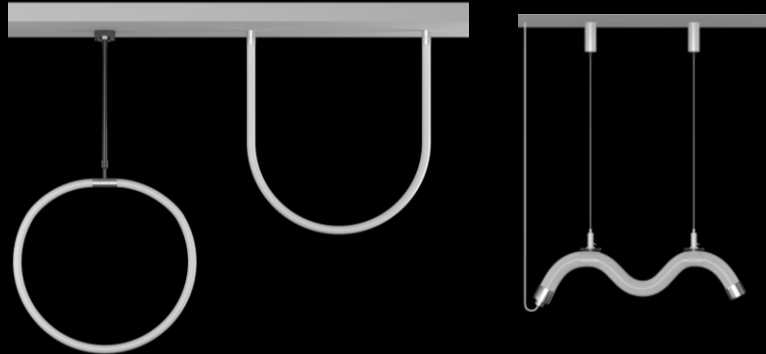
FLEXIBILITY

Can be bent in various forms with a minimum bend radius of 6 inches



MOUNTING

It has variety of mounting options; including horizontal surface or pendant mount, and vertical either surface or pendant, also it can be a mix of any of these mounting options



DISTRIBUTION

Emitting light 360 degrees ; widely use for artistic lighting space to bring more vivid designs.

EZ BEND TECHNOLOGY

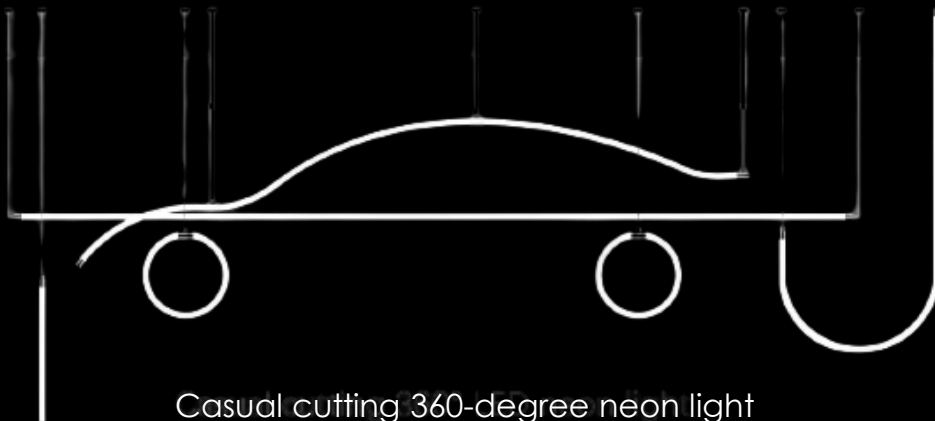
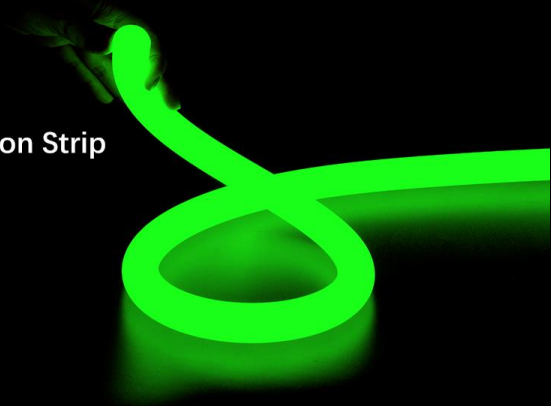
Easily bend to any unique shape and preserve it.

CUSTOMIZABLE

Can be tailored to any length and shape. Experience the freedom in design. Dare to be different. The only limit is your imagination.

360° LED Neon Strip

RGB full color
R monochrome
G monochrome
B monochrome



Casual cutting 360-degree neon light