

# FLEXY

## DECORATIVE FLEXIBLE FIXTURE

### Decorative Lighting

Flexy is a revolutionary lighting solutions designed to illuminate spaces with unparalleled adaptability. Engineered with precision, this innovative lighting system boasts 360-degree light dispersion. It has various mounting options: Surface Mount, and Pendant either vertically or horizontally. Moreover, this products offers the possibility to be cut at any lengths without dark zone and with solder free terminal, furthermore it can withstand any pattern and maintain its uniform look and distribution. flexy is ideal for any space where differentiation and uniqueness is key!



eralux®



DATE					
PROJECT NAME					
<b>TYPE</b>					
QTY					
ORDERING CODE	AE-DC-FXY	-	-	80	-

### OPERATING & ELECTRICAL

INPUT VOLTAGE	120-277V
POWER FACTOR	0.9
DIMMING	No Dimming
TOTAL HARMONIC DISTORTION (THD)	<20%

### PERFORMANCE

LUMENS PER FEET	~530lm/FT
POWER	~6W/FT
BEAM ANGLE	360°
FEATURES	Free Bend (no metal rod inside)

### MECHANICAL & HOUSING

CONSTRUCTION	Silicone body Metal end cap
FINISH	Silver (End Caps) White Silicone (Body)
POWER SUPPLY	75W DC Driver
LED BOARD	LED Array

### APPLICATION CONDITION

AMBIENT TEMPERATURE RANGE	-20°C to 45°C
STORAGE TEMPERATURE	-20°C to 60°C
PROTECTION	IP20 IK08 FLAME RESISTANCE Anti-UV Grade : UVA-340

### COMPATIBLE MOUNTING

MOUNTING	Surface Pendant
----------	--------------------

### WARRANTY

#### SYSTEM WARRANTY – 5 YEARS

Eralux will warrant defective drivers, LEDs and boards for 5 years from the date of purchase. This warranty is valid only if the fixture is installed and used as per installation instructions and specifications. If a defect is present, Eralux will send drivers and boards at no fee with a thorough replacement instructions along with instructions on the return of the defective parts back to Eralux.

#### LUMEN MAINTENANCE – L85 at 50,000 hours

Rated for 85% initial lumen output at 50,000 hours of operation, operated at 25°C ambient temperature; per guidelines published by the Illuminating Engineering Society (IES).

DATE	
PROJECT NAME	
<b>TYPE</b>	
QTY	
ORDERING CODE	AE-DC-FXY - - 80 -

## ORDERING GUIDE FOR 16FT flexy

EXAMPLE: AE-DC-FXY-16-2780-H-AIR

FIXTURE FAMILY	LENGTH	CCT	CRI	MOUNTING
<b>AE-DC-FXY</b>	-	-	<b>80</b>	-
<b>AE-DC-FXY</b> ERALUX Flexy Decorative free cut to desired length Flexible Fixture	<b>-16</b> 16 Feet  6W/FT  530LM/FT	<b>-30</b> 3000K CCT	<b>80</b> 80 CRI	<b>-H-SMT</b> Horizontal surface mount
				<b>-H-SMT-LINK</b> Horizontal surface mount with link
		<b>-35</b> 3500K CCT		<b>-H-AIR</b> Horizontal pendant mount
				<b>-H-AIR-O</b> Horizontal pendant mount O-Shape
		<b>-40</b> 4000K CCT		<b>-H-AIR-LINK</b> Horizontal pendant mount with link
				<b>-V-SMT-U</b> Vertical surface mount U-Shaped
				<b>-CUSTOM</b> Comes with just one driver and driver box, this is for custom mounting, refer to page 6

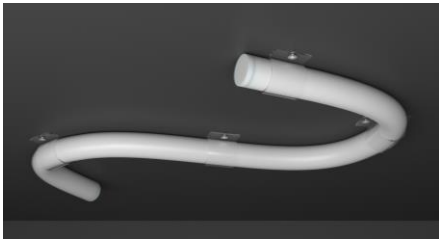
Power cord is 15FT and suspension wire is 6FT. Each fixture comes with straight through end cap and tail end cap.

The ordering guide for custom mounting option is at page 6

### MOUNTING OPTIONS

#### AE-DC-FXY-16-XX80-H-SMT

Horizontal surface mount



#### ACCESSORIES

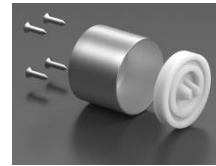
U-Bracket



Driver Box



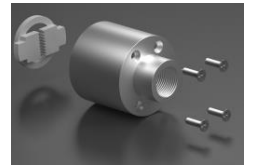
Tail end cap



Driver

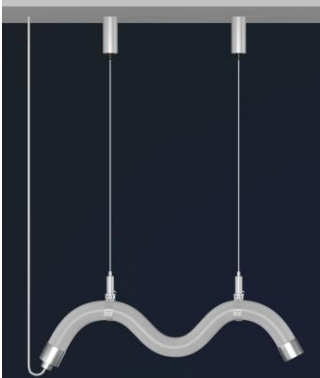


Straight through end cap



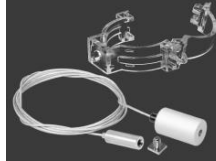
#### AE-DC-FXY-16-XX80-H-AIR

Horizontal pendant mount



#### ACCESSORIES

Suspension kit



Side through end cap



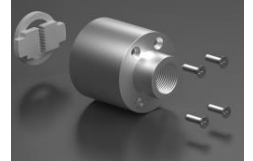
Tail end cap



Driver Box



Straight through end cap



Driver



DATE					
PROJECT NAME					
<b>TYPE</b>					
QTY					
ORDERING CODE	AE-DC-FXY	-	-	80	-

## MOUNTING OPTIONS

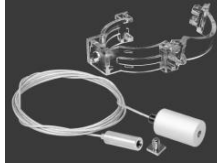
### AE-DC-FXY-16-XX80-H-AIR-O

Horizontal Pendant O-shape mount

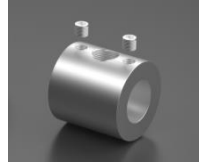


### ACCESSORIES

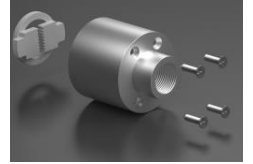
Suspension kit



T-connector



Straight through end cap



Driver Box

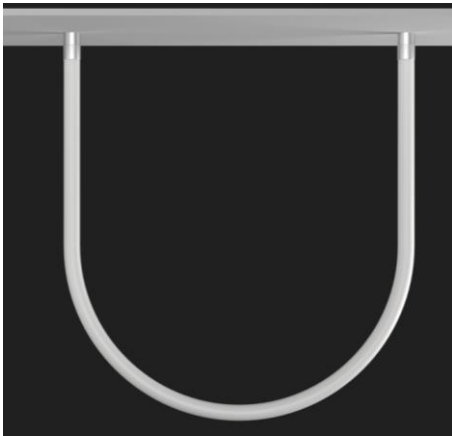


Driver



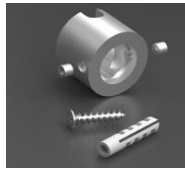
### AE-DC-FXY-16-XX80-V-SMT-U

Vertical surface mount U-shape

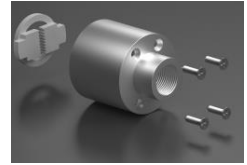


### ACCESSORIES

Ceiling fixed bolt



Straight through end cap



Driver Box



Driver

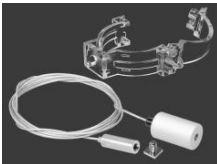


### AE-DC-FXY-16-XX80-H-AIR-LINK

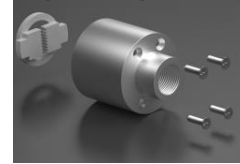
Horizontal pendant mount with link

### ACCESSORIES

Suspension kit



Straight through end cap



Side through end cap



T connector



Driver Box



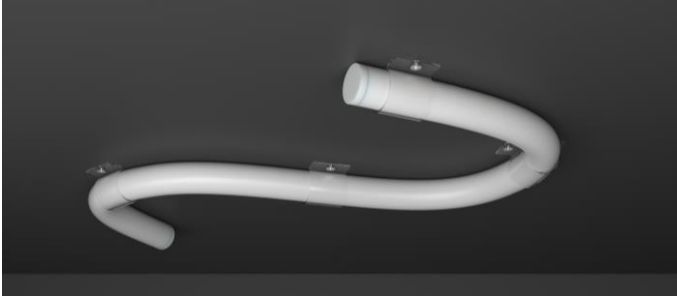
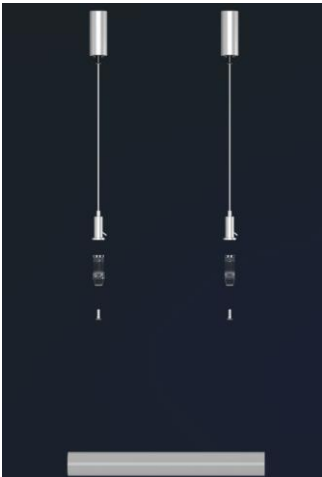
Driver



DATE	
PROJECT NAME	
<b>TYPE</b>	
QTY	
ORDERING CODE	AE-DC-FXY - - 80 -


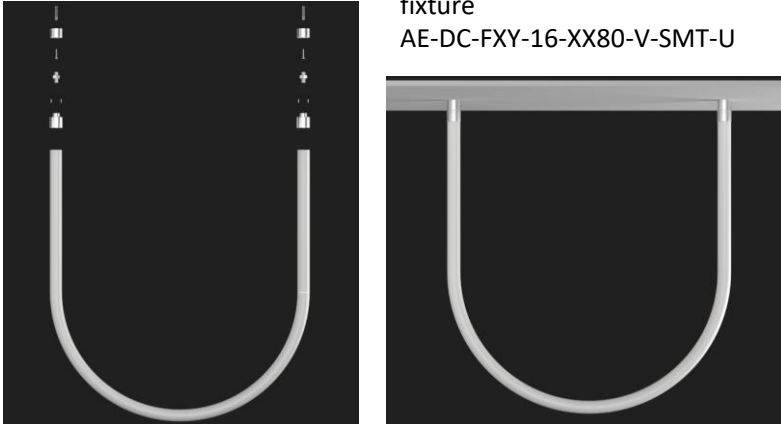
## MOUNTING OPTIONS BOM

There are unlimited mounting possibilities for Flexy, and they can be divided under two main options surface mount and suspended either vertical or horizontal. You can add more accessories Table below shows the BOM for each part number that represents different mounting option.

MOUNTING OPTION	PART NUMBER	MATERIALS
	Horizontal surface mount AE-DC-FXY-16-XX80-H-SMT	1: 16 FT Flexy 1: Driver 1: Driver box 1: Solder free connector ( comes with end cap straight through) 1: Tail end cap 6: U-bracket The U-Bracket is dependent on the length and the shape of Flexy. 3FT=1 U-Bracket or 1 curve = 1 U-bracket. Order more if needed
	Horizontal surface mount with link AE-DC-FXY-16-XX80-H-SMT-LINK	1: 16 FT Flexy 1: Driver 1: Driver box 1: End cap straight through 1: Solder free connector ( comes with end cap straight through) 1: T-connector 6: U-bracket The U-Bracket is dependent on the length and the shape of Flexy. 3FT=1 U-Bracket or 1 curve = 1 U-bracket. Order more if needed
	Horizontal pendant mount AE-DC-FXY-16-XX80-H-AIR	1: 16 FT Flexy 1: Driver 1: Driver box 1: Solder free connector ( comes with end cap straight through) 1: Tail end cap 1: Side through end cap 6: Suspension kit (pendant clips and suspension wires 6FT) The suspension kit is dependent on the length and the shape of Flexy. 3FT=1 Suspension kit. or 1 curve = 1 Suspension kit. Order more if needed

DATE					
PROJECT NAME					
<b>TYPE</b>					
QTY					
ORDERING CODE	AE-DC-FXY	-	-	80	-

**MOUNTING OPTIONS BOM**

MOUNTING OPTION	PART NUMBER	MATERIALS
	<p>Horizontal pendant mount with link                      AE-DC-FXY-16-XX80-H-AIR-LINK                      This is used to connect two or more Flexy with each other.</p>	<p>1: 16 FT Flexy                      1: Driver                      1: Driver box                      1: End cap straight through                      1: Solder free connector ( comes with end cap straight through)                      1: T connector                      1: Side through end cap                      6: Suspension kit (pendant clips and suspension wires 6FT)</p>
	<p>Horizontal pendant mount O-Shape                      AE-DC-FXY-16-XX80-H-AIR-O</p>	<p>1: 16 FT Flexy                      1: Driver                      1: Driver box                      1: End cap straight through                      1: Solder free connector ( comes with end cap straight through)                      1: T-connector                      6: Suspension kit (pendant clips and suspension wires 6FT)                      The suspension kit is dependent on the length of Flexy 1FT=1 suspensions kit                      Order more if needed</p>
	<p>Vertical surface mount U-shaped fixture                      AE-DC-FXY-16-XX80-V-SMT-U</p>	<p>1: 16 FT Flexy                      1: Driver                      1: Driver box                      1: End cap straight through                      1: Solder free connector ( comes with end cap straight through)                      2: Ceiling fixed bolt for cable straight and side through.</p>

DATE	
PROJECT NAME	
<b>TYPE</b>	
QTY	
ORDERING CODE	AE-DC-FXY - - 80 -

## ORDERING GUIDE FOR CUSTOM LENGTH

EXAMPLE: AE-DC-FXY-16-3080-CUSTOM

FIXTURE FAMILY	LENGTH	CCT	CRI	ACCESSORIES
<b>AE-DC-FXY</b>	-	-	<b>80</b>	<b>-CUSTOM</b>
<b>AE-DC-FXY</b> ERALUX Flexy Decorative free cut to desired length Flexible Fixture	<b>-16</b> 16 Feet.	<b>-30</b> 3000K CCT	<b>80</b> 80 CRI	-CUSTOM For custom mounting option comes with Driver ELG-75-24A. Each 16 FT Flexa comes with 1 driver and driver box.  Can be a mix of any mounting option Choose from below tables the accessories needed for the desired mounting option.
		<b>-35</b> 3500K CCT		
	<b>-XX</b> Custom Length Max length per run is 16 feet.	<b>-40</b> 4000K CCT		

Power cord 15 FT and suspension wire 6 FT. Each fixture comes with straight through end cap, tail end cap and driver.

## ORDERING GUIDE ACCESSORIES

For the custom choice you will get XXFT Flexy with driver, 1 end cap straight through, 1 tail end cap, and you can add the accessories needed to create the desired design from the tables below. Or you can send us the design you want, and we will build the BOM.

### End cap accessories

ACCESSORY FAMILY	PART	QUANTITY
<b>DC-FX-ACC-ALEC</b>	-	
<b>DC-FX-ACC-ALEC</b> End cap for flexy	<b>-STRAIGHT THROUGH</b> Straight through end cap	
	<b>-TAIL</b> Tail end cap	
	<b>-TCONNECTOR</b> T connector	
	<b>-CEILING FIXED BOLT</b> Ceiling fixed bolt	
	<b>-SIDE THROUGH</b> End cap for cable side through	
<b>DC-FX-ACC</b>	<b>-SOLDER FREE CONNECTOR</b>	

### Installation accessories


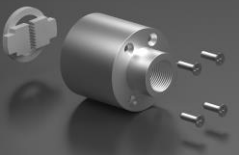


ACCESSORY FAMILY	PART	QUANTITY
<b>DC-FX-ACC-IN</b>	-	
<b>DC-FX-ACC-IN</b> flexy installation accessories for horizontal and vertical	<b>-U BRACKET</b> U bracket for ceiling mount	
	<b>-SUS-CLIP-WIRE</b> Pendant clip and suspension wire	
	<b>-CANOPY</b> Canopy	
	<b>-DRIVER BOX</b> Driver box To hide the driver	

More information about the accessories are in next pages.

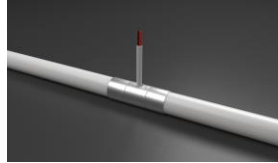
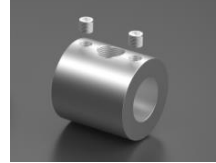
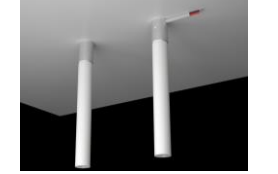



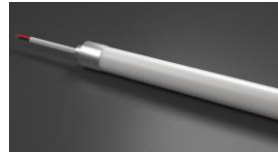

DATE	
PROJECT NAME	
<b>TYPE</b>	
QTY	
ORDERING CODE	AE-DC-FXY - - 80 -

## ACCESSORIES

Aluminum end cap, there are two end cap:

IMAGE	DIAGRAM	DESCRIPTION	ITEM NUMBER
		End cap for cable straight through. Used on the side where the power cord is. Φ 25.8 X L 33mm	DC-FX-ACC-ALEC-STRAIGH THROUGH
		Tail end cap. Used on the other side of the flexy. Φ 25.8 X L 25mm	DC-FX-ACC-ALEC-TAIL




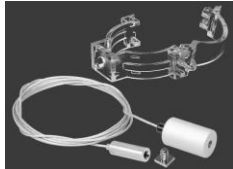

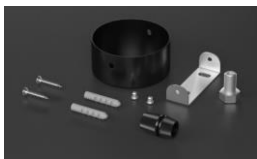


Aluminum end cap accessories, there are three accessories that can be added to end cap.

IMAGE	DIAGRAM	DESCRIPTION	ITEM NUMBER
		T connector Used to connect two flexy with each other through 2 straight through end cap. Φ 25.8 X L 33mm	DC-FX-ACC-ALEC-TCONNECTOR
		Ceiling fixed bolt for cable straight and side through. Used for surface mounting, It is connected to straight through end cap. Φ 25.8 X L 25mm	DC-FX-ACC-ALEC-CEILING FIXED BOLT
		End cap for cable side through. It is connected to straight through end cap to pass the cord sideways. Φ 29.8 X L 25mm	DC-FX-ACC-ALEC-SIDE THROUGH
		Solder free connector. Comes with straight through end cap and 15ft power cord	DC-FX-ACC-SOLDER FREE CONNECTOR

DATE					
PROJECT NAME					
<b>TYPE</b>					
QTY					
ORDERING CODE	AE-DC-FXY	-	-	80	-

## ACCESSORIES MOUNTING ACCESSORIES

In the table below are different types for accessories needed for installation of flexy.

IMAGE	ACCESSORY	DESCRIPTION	ITEM NUMBER
		U bracket for ceiling mounted <b>The U-Bracket is dependent on the length of flexy 3FT=1 U-Bracket</b>	DC-FX-ACC-IN-U BRACKET
		Pendant clip and suspension wire (6ft) for pendant mounting <b>The suspension kit is dependent on the length of flexy 3FT=1 suspensions kit</b>	DC-FX-ACC-IN-SUS-CLIP-WIRE
		Canopy for pendant	DC-FX-ACC-IN-CANOPY
		Driver box. Used to install the driver inside it.	DC-FX-ACC-IN-DRIVER BOX

### Driver

The driver used is **ELG-75-24A**, one driver needed every 16FT.

	Output
DC Voltage	24V
Rated current	3.15A
Rated power	75.6W



### DRIVER BOX

The driver box is a housing which can be surface mounted to hide the driver next to the flexy, can fit up to two drivers. It can be order separately.





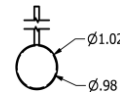
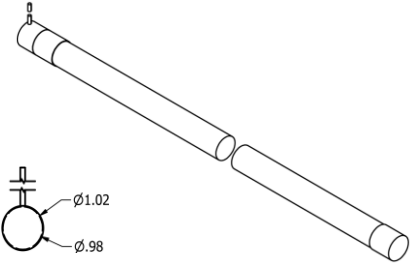
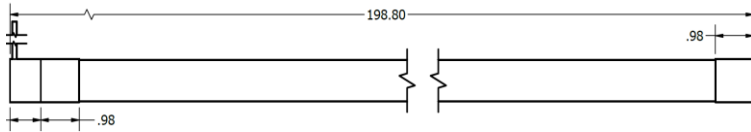
DATE				
PROJECT NAME				
<b>TYPE</b>				
QTY				
ORDERING CODE	AE-DC-FXY	-	-	80

**PRODUCT DIMENSION**

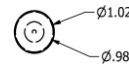
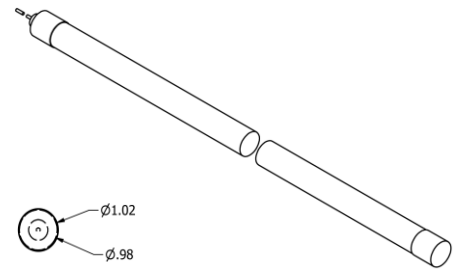
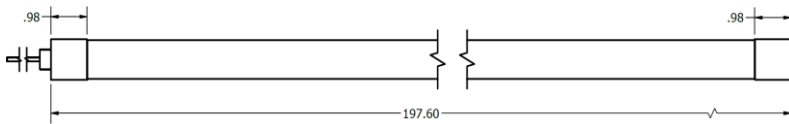
AE-DC-FXY-16-XX-90

Aluminum end cap

Manual Soldering



Cable straight through



**LUMENS AT DIFFERENT CCT**

ITEM NUMBER	POWER (W/FT)	INPUT VOLTAGE	CCT	LUMEN (LM/FT)
AE-DC-FXY-16-3080	6W/FT	120-277V	3000K	513LM/FT
AE-DC-FXY-16-3580			3500K	518LM/FT
AE-DC-FXY-16-4080			4000K	534LM/FT

DATE					
PROJECT NAME					
<b>TYPE</b>					
QTY					
ORDERING CODE	AE-DC-FXY	-	-	80	-

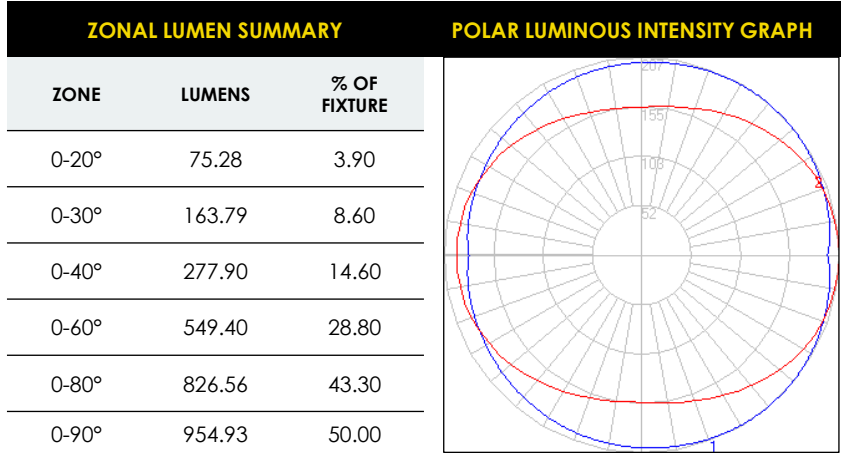
**PHOTOMETRIC DATA**

AE-DC-FXY-16-4080-XX

19 WATTS

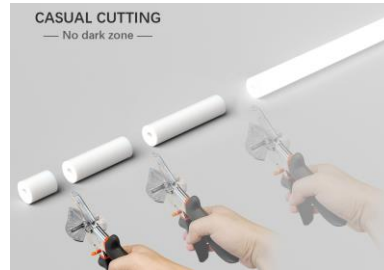
2000lm

2700K CCT



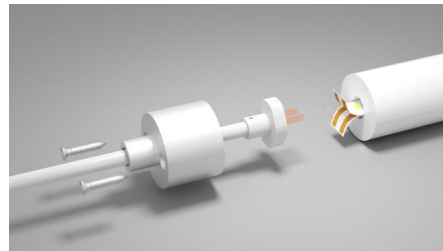
**EZ Cut Technology**

Introducing the new cutting technology, because of the durable material Flexy can be cut easily using any strength cutter at any length, not restricted by cutting unit without dark zone.

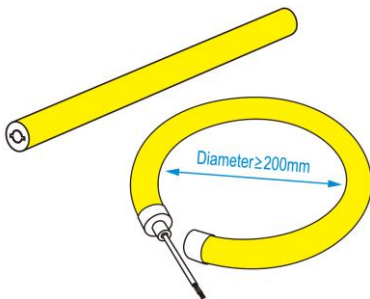


**EZ Power Technology**

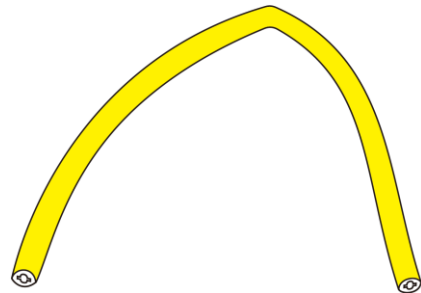
Introducing the new power cord technology, because of the solder free power cord connector you can easily install the power cord into the Flexy after cutting it.



**FREE BENDING REMARKS**



Correct bending direction and bending radius.

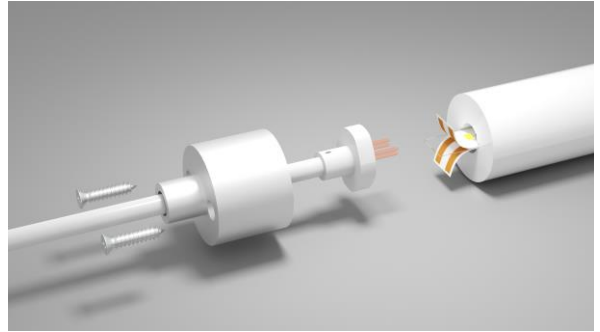
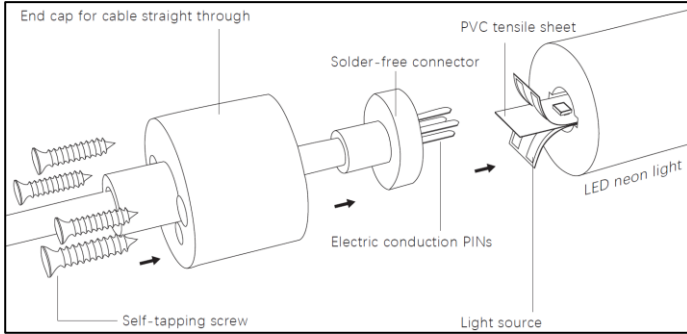


Do not twist it or bend reversely.

DATE					
PROJECT NAME					
TYPE					
QTY					
ORDERING CODE	AE-DC-FXY	-	-	80	-

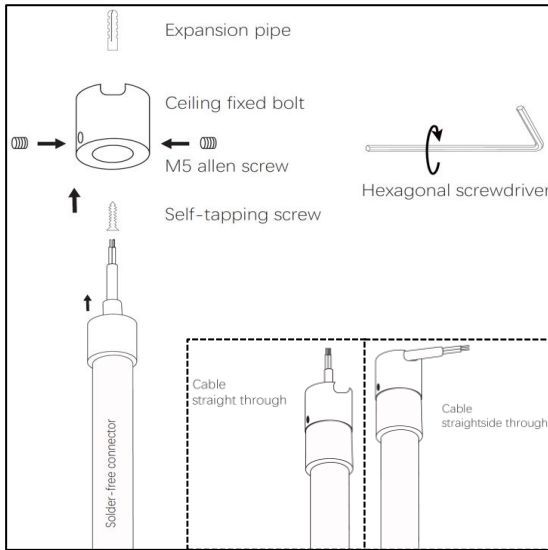
## INSTALLATIONS INSTRUCTIONS FOR END CAP AND END CAP ACCESSORIES

### CABLE STRAIGHT THROUGH END CAP



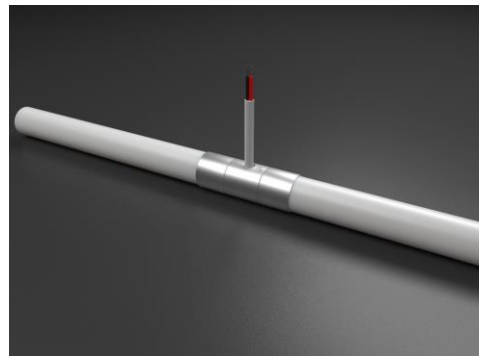
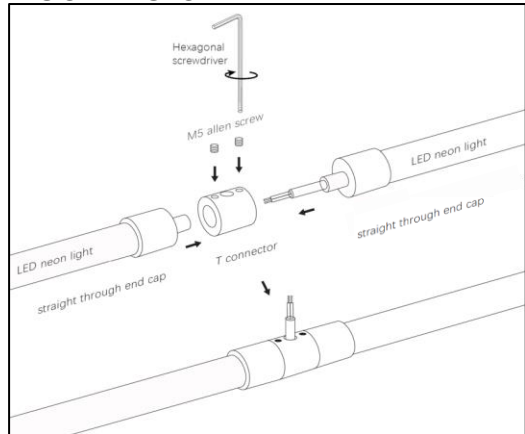
Split light source and PVC tensile sheet. Insert electric conduction PINs to conduct with conduct pads of light source. Mount solder-free connector by end cap for cable straight through. Fix end cap to neon light by self-tapping screw. This solder free connector is only available for Flexy

### CEILING FIXED BOLT



1. Punch expansion pipe into ceiling.
2. Fix ceiling fixed bolt by self-tapping screw.
3. Install cable straight through end cap into ceiling fixed bolt.
4. Use M5 allen screw fix Solder-free connector by hexagonal screwdriver.

### T CONNECTOR

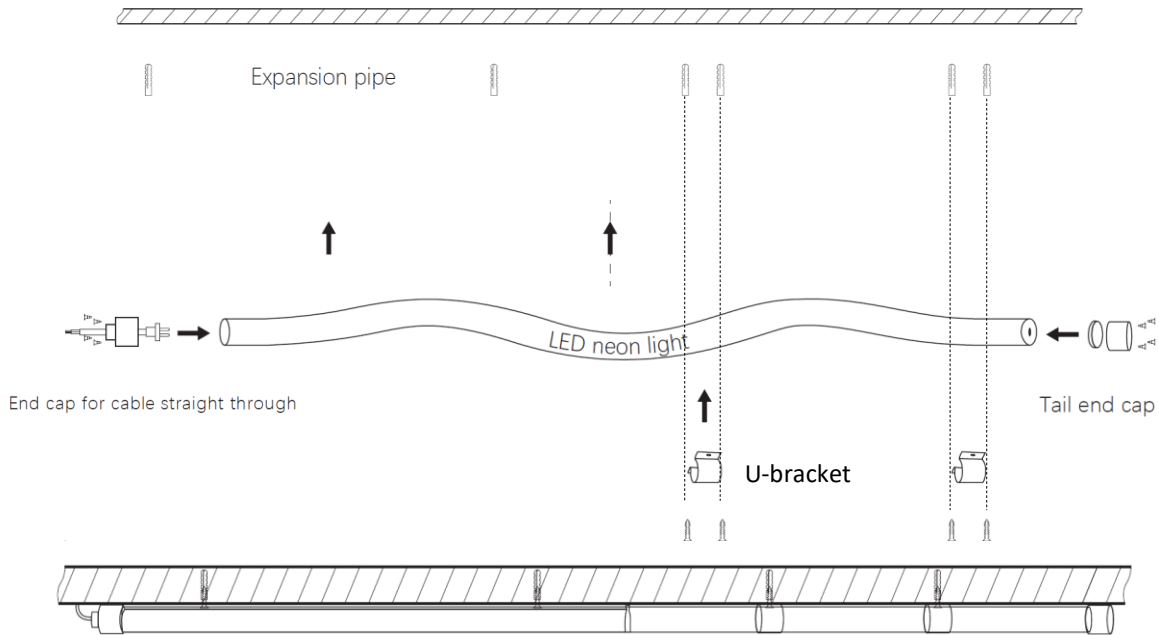


Fix cable straight through end cap with another one to T connector by M5 allen screw.

DATE					
PROJECT NAME					
<b>TYPE</b>					
QTY					
ORDERING CODE	AE-DC-FXY	-	-	80	-

## INSTALLATIONS INSTRUCTIONS

### SURFACE MOUNT HORIZONTAL (AE-DC-FXY-16-XX80-H-SMT )

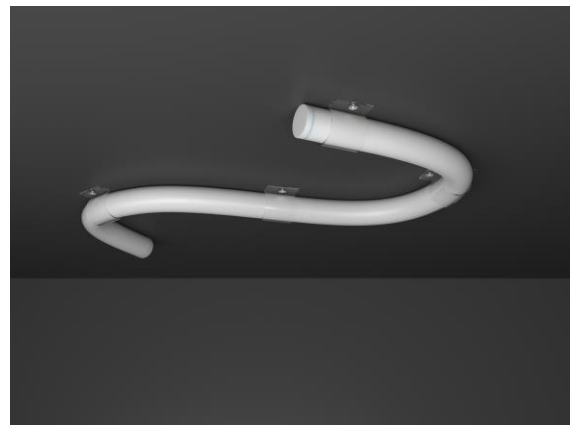


#### Accessories needed:

Description	Part number	Quantity
End cap for cable straight through	DC-FX-ACC-ALEC-STRAIGH THROUGH	1
Tail end cap	FX-ACC-ALEC-TAIL	1
U bracket for ceiling mounted	FX-ACC-IN-U BRACKET	6

You can add end cap for cable side through (FX-ACC-EC-AL4) to hide the wire in the ceiling

1. Punch expansion pipe into ceiling.
2. Install End cap for cable straight through and tail end cap onto neon light.
3. Install neon light into R clip, Fix R clip onto ceiling by self-tapping screw.



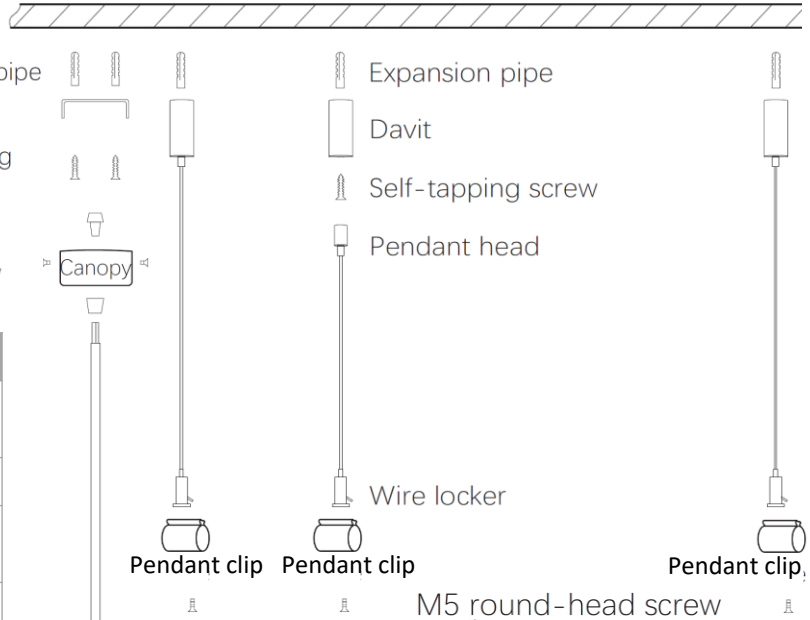
DATE	
PROJECT NAME	
<b>TYPE</b>	
QTY	
ORDERING CODE	AE-DC-FXY - - 80 -

## INSTALLATIONS INSTRUCTIONS

### SUSPENDED HORIZONTAL (AE-DC-FXY-16-XX80-H-AIR)



- Expansion pipe
- Bracket
- Self-tapping screw
- Wire locker
- Fixed screw



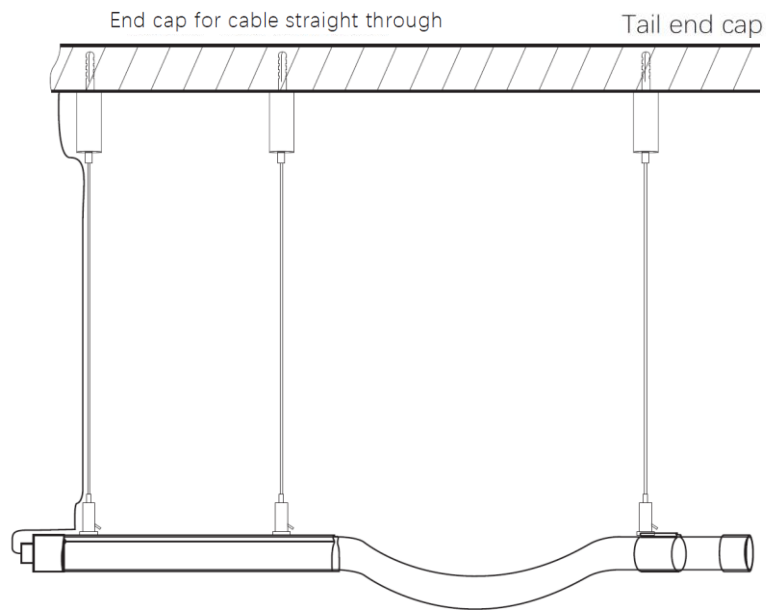
#### Accessories needed:

Description	Part number	Quantity
End cap for cable straight through	DC-FX-ACC-ALEC-STRAIGH THROUGH	1
Tail end cap	FX-ACC-ALEC-TAIL	1
Pendant clip and suspension wire	FX-ACC-IN-SUS-CLIP-WIRE	6
Driver Box	FX-ACC-IN--DRIVER BOX	1

You can add end cap for cable side through (FX-ACC-EC-AL4), so the cable can pass side way.

You can use the canopy is for the power cord (optional).

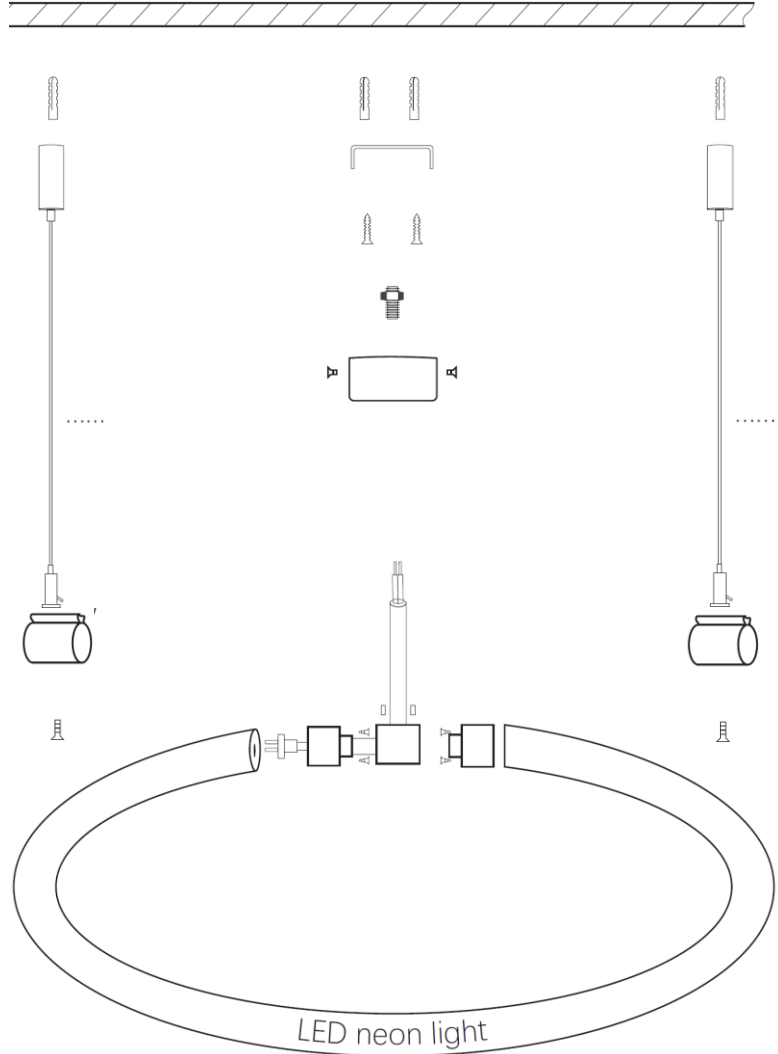
1. Punch expansion pipe into ceiling.
2. Fix davit by self-tapping screw, install pendant head into davit.
3. Fix pendant clip to the suspension wire by M5 screw.
4. Install End cap for cable straight through and tail end cap onto neon light.
5. Install neon light into the clips and close it.



DATE				
PROJECT NAME				
<b>TYPE</b>				
QTY				
ORDERING CODE	AE-DC-FXY	-	-	80

## INSTALLATIONS INSTRUCTIONS SUSPENDED HORIZONTAL O-Shape AE-DC-FXY-16-XX80-H-AIR-O

For this installation it is the same procedure as suspended horizontal, but you need to make the O-Shape.



### Accessories needed:

Description	Part number	Quantity
End cap for cable straight through	DC-FX-ACC-ALEC-STRAIGH THROUGH	2
T connector	FX-ACC-ALEC-TCONNECTOR	1
Pendant clip and suspension wire	FX-ACC-IN-SUS-CLIP-WIRE	6
Driver Box	FX-ACC-IN--DRIVER BOX	1

The canopy is for the power cord.

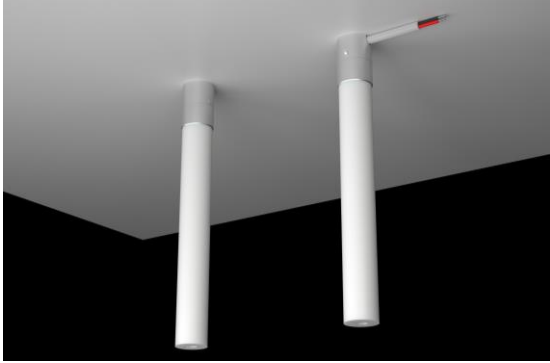
1. Punch expansion pipe into ceiling.
2. Fix davit by self-tapping screw, install pendant head into davit.
3. Fix pendant clip to the suspension wire by M5 screw.
4. Install End cap for cable straight through on both sides and connect them with the T connector.
5. Install neon light into the clips and close it.



DATE					
PROJECT NAME					
<b>TYPE</b>					
QTY					
ORDERING CODE	AE-DC-FXY	-	-	80	-

## INSTALLATIONS INSTRUCTIONS

### SURFACE MOUNT VERTICAL I-SHAPE AND U-SHAPE (AE-DC-FXY-16-XX80-V-SMT-U)



The wire can be passed through the wall (hidden) as shown for the left fixture or it can pass along the ceiling as shown for the right fixture. It can be surface mounted vertically in I shape or U shape.

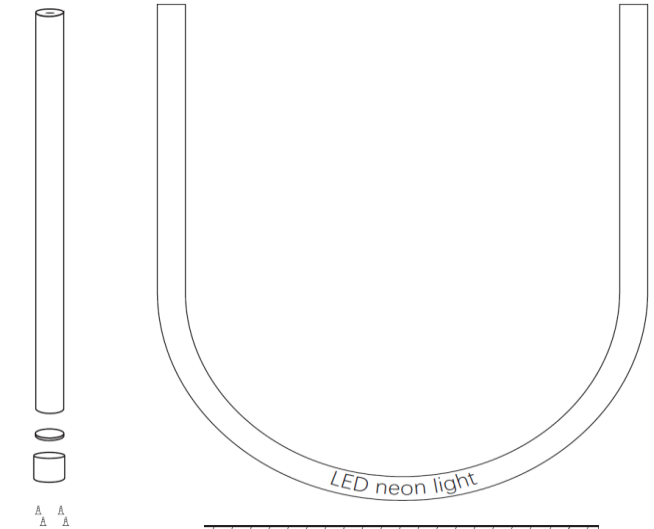
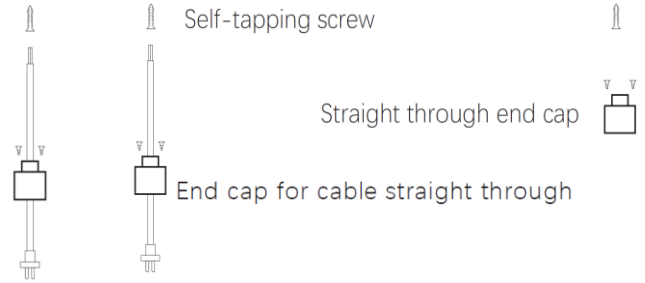
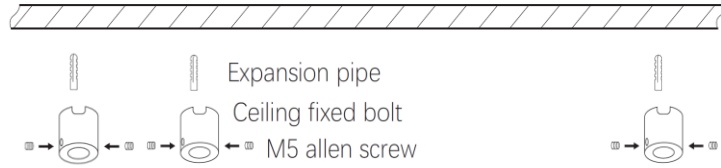
#### Accessories needed for I-Shape:

Description	Part number	Quantity
End cap for cable straight through	DC-FX-ACC-ALEC-STRAIGH THROUGH	1
Ceiling fixed bolt for cable straight and side through.	FX-ACC-ALEC-CEILING FIXED BOLT	1
Tail end cap	FX-ACC-ALEC-TAIL	1

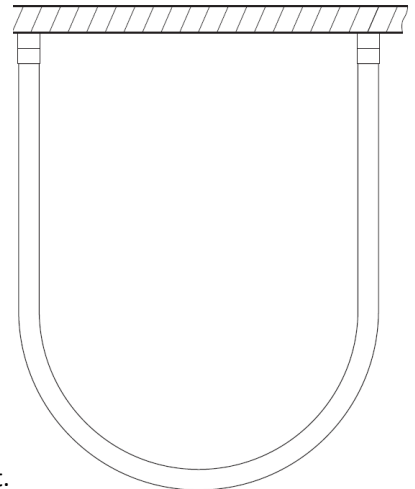
#### Accessories needed for U-Shape:

Description	Part number	Quantity
End cap for cable straight through	DC-FX-ACC-ALEC-STRAIGH THROUGH	2
Ceiling fixed bolt for cable straight and side through.	FX-ACC-ALEC-CEILING FIXED BOLT	2

1. Punch expansion pipe into ceiling.
2. Install end cap for cable straight through and tail end cap onto neon light.
3. Fix ceiling fixed bolt onto ceiling, cables pass through ceiling fixed bolt.
4. Insert end cap for cable straight through and tail end cap into ceiling fixed bolt.



I-Shape



DATE				
PROJECT NAME				
<b>TYPE</b>				
QTY				
ORDERING CODE	AE-DC-FXY	-	-	80

## INSTALLATIONS INSTRUCTIONS

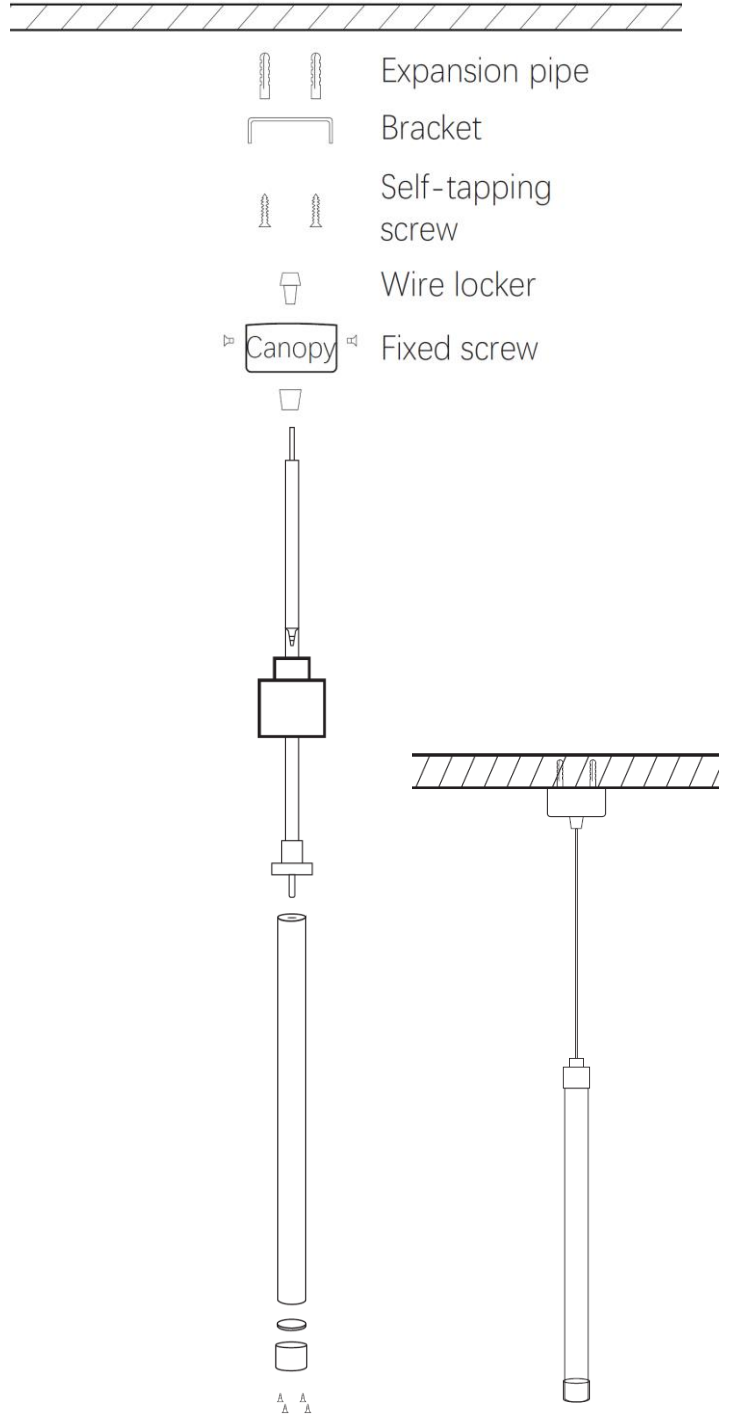
### SUSPENDED VERTICAL

The fixture can be suspended vertically through the power cord.

Accessories needed:

Description	Part number	Quantity
End cap for cable straight through	DC-FX-ACC-ALEC-STRAIGH THROUGH	1
Tail end cap	FX-ACC-ALEC-TAIL	1
Canopy for pendant	FX-ACC-IN-CANOPY	1

1. Punch expansion pipe into ceiling.
2. Install end cap for cable straight through and tail end cap onto neon light.
3. Fix bracket onto ceiling by self-tapping screw, fix cables by wire locker, fix the canopy to bracket by fixed screw.





# FLEXY

DECORATIVE FLEXIBLE FIXTURE

Decorative Lighting

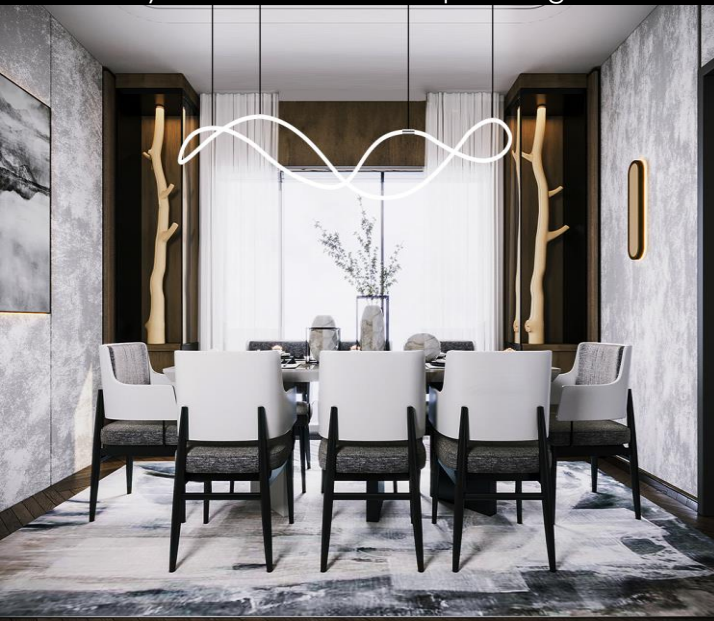
DATE					
PROJECT NAME					
TYPE					
QTY					
ORDERING CODE	AE-DC-FXY	-	-	80	-

## Customized shape and length

flexy can be cut at any length desired, and because unique ability, it can freely bend into any design and preserve the sleek shape. Experience unparalleled lighting freedom with our flexy light.

The following images are examples to show the application for flexy.

Flexy is used to create simple designs



# FLEXY

DECORATIVE FLEXIBLE FIXTURE

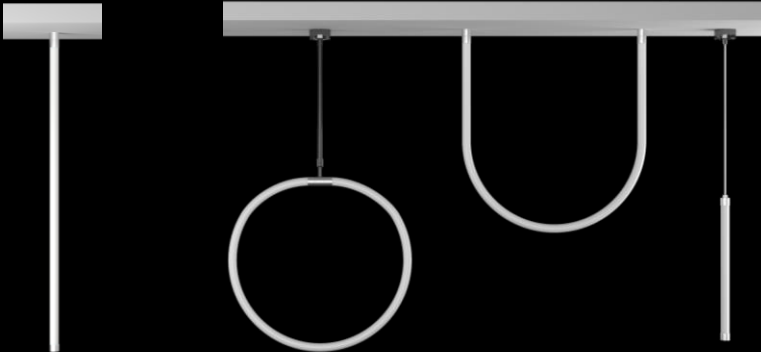
DECORATIVE FLEXIBLE FIXTURE

DATE					
PROJECT NAME					
<b>TYPE</b>					
QTY					
ORDERING CODE	AE-DC-FXY	-	-	80	-

## OVERVIEW

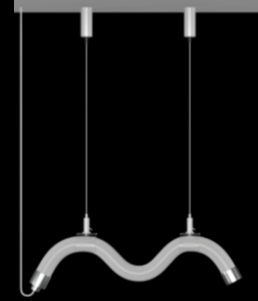
### FLEXIBILITY

Can be bent in various forms with a minimum bend radius of 6 inches



### MOUNTING

Horizontal /Vertical installation. It can be surface mount or suspended



### 360 LIGHT DISTRIBUTION

Emitting light 360 degrees ; widely use for artistic lighting space to bring more vivid designs.

### EZ CUT TECHNOLOGY

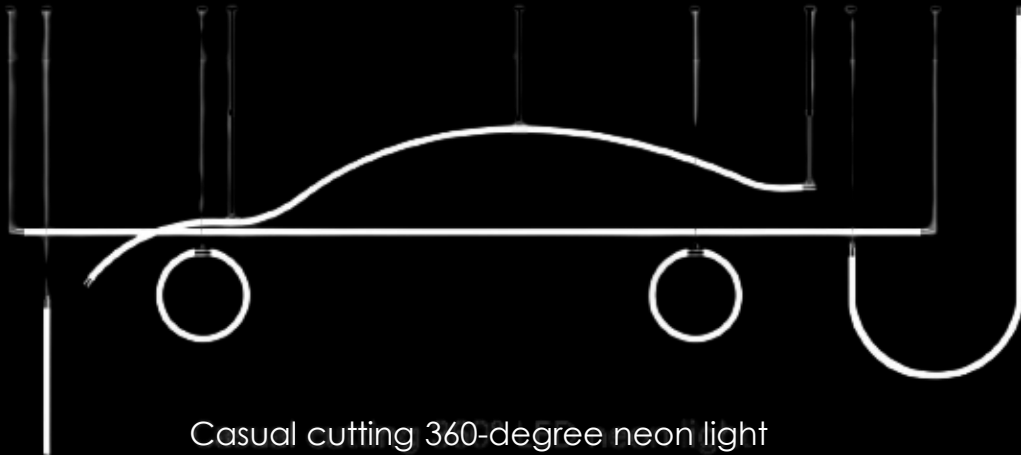
Easily cut at any length with no dark zone.

### EZ POWER TECHNOLOGY

Easily connect the power cord with no soldering.

### CUSTOMISABLE

Can be tailored to any length and shape. Experience the freedom in design. Dare to be different. The only limit is your imagination.



Casual cutting 360-degree neon light