

G5

LINEAR LED LIGHT

Surface Mount Architectural Linear | 2.5" Aperture | Direct

The G5 is a Linear Architectural LED Light, designed to deliver direct lighting for a seamless ambiance. Featuring a selection of diffuser options—including parabolic louver, drop, and wall wash lenses. This surface mount G5 is available in 4ft long and comes with 4ft surface mount kit either black or white.

Applications: Art Galleries | Office | Retail Stores | Hospitality.

	DATE	QTY	ACC. QTY	TYPE
PROJECT				
PN				
ACCESSORY PN				
NOTES				

DYNAMIC MENU	
Order Information	Page 2
Dimensions	Page 3
Accessories	Page 3
Photometric Data	Page 6

[Install Instruction link](#)



SPECIFICATIONS

Input Voltage	120-347V	
Power Factor	>0.9	
Total Harmonic Distortion	<20%	
Dimming Page 7	0-10V dimming	
CRI	80 CRI	
CCT	30K 35K 40K 50K	
Efficacy	~110 lm/W	1100 lm/ft
Length & Power	4 FT 40W	
Ambient Temperature Range	-10°C to 40°C	
Mounting Options	Surface mount	
Fixture Finish	Black White Silver Gun powder 	
Custom Design	X, L, T shapes Continuous runs Hexagon Shapes	
Optics	Polycarbonate lens Drop lens Wall Wash Parabolic louver	



PRODUCT FEATURES



PRODUCT CERTIFICATIONS



Design Lights Consortium® (DLC) qualified product. Not all versions of this product may be DLC qualified. Please check the DLC Qualified Products List at www.designlights.org/QPL to confirm which versions are qualified" [page 7](#)

SYSTEM WARRANTY – 5 YEARS

Eralux will warrant defective drivers, LEDs and boards for 5 years from the date of purchase. This warranty is valid only if the fixture is installed and used as per installation guides and specifications. If a defect is present, Eralux will send drivers and boards at no fee with a thorough replacement instructions along with instructions on the return of the defective parts back to Eralux.

LUMEN MAINTENANCE – L85 at 50,000 hours

Rated for 85% initial lumen output at 50,000 hours of operation, operated at 25°C ambient temperature; per guidelines published by the Illuminating Engineering Society (IES).

LINEAR LED LIGHT

Surface Mount Architectural Linear | 2.5" Aperture | Direct



ORDERING GUIDE

AE-SF-G5CA	440		010			
AE-SF-G5CA ERALUX G5 Linear Architectural Fixture 120-347V input voltage	4 40 4ft 40W 4,400lm	30/35/40¹ 3000/3500/4000K selectable 30/40/50 3000/4000/5000K selectable	010 0-10V	WH-GB-SMT White BK-GB-SMT Black	[BLANK] No option LDE1² Fade-to-Black down to 1% EMBB³ Emergency battery backup 1DIM⁴ 1% Dimming	[BLANK] Standard polycarbonate -P Prime Parabolic silver -PS Prime Shadow Parabolic Black -DL 0.5" Drop -WW Wall Wash
Fixture Family	Length Power	CCT	Control	Finish	Option	Diffuser

NOTES

1. Default CCT setting is 3500K but can be changed upon request before shipping.
2. LDE1 is a Lutron Hi-lume EcoSystem driver with Soft-on, it requires color selection, if not the default CCT is 3500K.
3. EMBB option available in 120-277V only.
4. 1DIM available only in 120-277V, it works for 4,5,6,8 FT

CAUTION:

- If there are multiple fixtures connected to the same 0-10V dimming line, a 0-10V controller must be considered to enable consistent dimming across the fixtures. Failure to do so will lead to inconsistent dimming and behaviors in the fixtures. Single switch is not recommended for controlling multiple fixtures simultaneously.
- Maximum of 300W per electrical drop.



ORDERING GUIDE – TRIAC Dimming

AE-SF-G5CA			-TRI	
AE-SF-G5CA ERALUX G5 Linear Architectural Fixture	4 40 4ft 40W 4,400lm	30 3000K 35 3500K 40 4000k	-TRI TRIAC Dimming	-WH-GB White -BK-GB Black
Fixture Family	Length Power	CCT	Controls	Finish

LINEAR LED LIGHT

Surface Mount Architectural Linear | 2.5" Aperture | Direct

DIMENSIONS

SIZE	TOP/BOTTOM VIEW	SIDE VIEW
4FT		

DRILLING PATTERN

SIZE	STAND ALONE INSTALLATION
4FT	

ACCESSORIES

FOR SURFACE MOUNT

Ordered separately if needed

SURFACE MOUNT BRACKET

ORDER CODE	DESCRIPTION	PICTURE
AE-SF-G5-SMT-WH-4ft	Surface mount kit for 4 feet – 1 piece – White	
AE-SF-G5-SMT-BK-4ft	Surface mount kit for 4 feet – 1 piece – Black	

LINEAR LED LIGHT

Surface Mount Architectural Linear | 2.5" Aperture | Direct

DIFFUSER OPTIONS

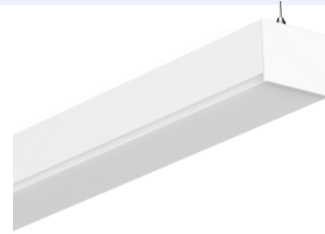
Drop Lens

Description

Highly durable frosted polycarbonate lens provide a side glowing with crisp corners visible at distance. This drop lens gives a 3D look to the light that will enliven your space and adding wider spread to the surrounding. 23% lumens less.

AE-SF-G5/SPT-Drop Lens-0.5 inch-4FT-WH
AE-SF-G5/SPT-Drop Lens-0.5 inch-4FT-BK

Pictures



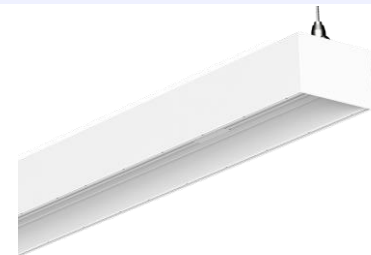
Wall Wash Lens

Description

The wall washing is a feature where the luminaire is typically positioned at least 12" from the wall to enhance the smoothness of a wall by eliminating shadows or to highlight a wall to create visual interest.

AE-SF-G5/SPT-4FT-WW-KIT-WH
AE-SF-G5/SPT-4FT-WW-KIT-BK

Pictures



Prime lens

Description

The Prime features a parabolic silver louver that offers outstanding light shielding and an attractive, crisp visual texture. Its parabolic blade design, along with side reflectors, effectively directs light, enhancing brightness and efficiency in lighting applications. The prime delivers a modern, sleek look, making them suitable for contemporary spaces. Efficacy ~90Lm/W & UGR <15

Pictures



Prime Shadow lens

Description

The Prime Shadow features a parabolic black louver that offers outstanding light shielding and an attractive, crisp visual texture. Its black parabolic blade design, along with side reflectors, effectively reduce glare by absorbing more light. Black louvers can create a more dramatic or industrial aesthetic, fitting well in specific design contexts. Efficacy ~55Lm/W & UGR <15

Pictures



LINEAR LED LIGHT

Surface Mount Architectural Linear | 2.5" Aperture | Direct

CONTROLS

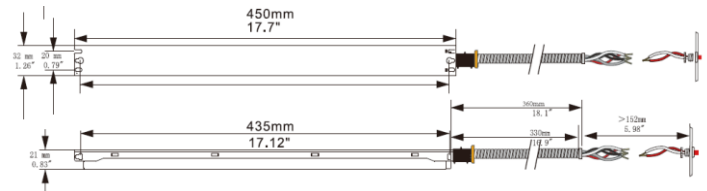
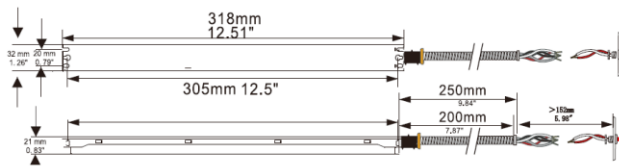
EMERGENCY LED DRIVER (BLD-YTXXD-XXX)

BLD-YT08D-XXX

BLD-YT15D-XXX



The BLD-YTXXD-XXX series LED Emergency Driver is UL listed for field and factory installations. It switches to emergency mode during power failures, providing up to 90 minutes of lighting. With an integrated battery, charger, and converter, it delivers 8 or 15W constant power at 30-60VDC. Its slim shape is ideal for use in linear LED lighting fixtures.



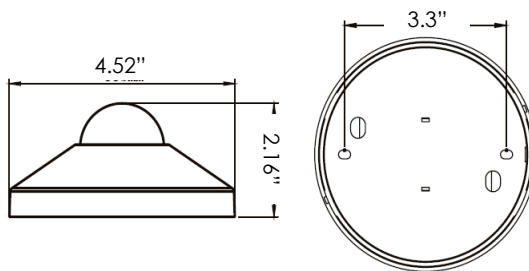
SPECIFICATIONS	
Input Voltage	30-60VDC
Power Frequency	50/60HZ
Output Voltage	30-60VDC
Output Power	8W 15W
Ambient Temperature	0°C to 50°C
	30°F to 122°F
Installation	Integrated

ROOM OCCUPANCY SENSOR

Ordered separately, field installed

PART NUMBER	DESCRIPTION
AE-CT-DT806	Detecta - Room Occupancy Sensor
RC102	RC102 Remote Control

SPECIFICATIONS	
Input Voltage	120-277 Vac
Power Frequency	50/60HZ
Rated Load	At 120 Vac 800W
	At 277 Vac 1200W
Detection Range	3-10 Meters
	9.8- 32.8 Feet
Standby Power	~0.9W
Time Setting	10 sec to 30 min
Light Control	10-2,000LUX
Installation	Ceiling Mounted



LINEAR LED LIGHT

Surface Mount Architectural Linear | 2.5" Aperture | Direct

LUMEN ESTIMATE

Lumen output varies based on CCT and CRI. An estimate of lumen output of the various CCT/CRI combinations, use correction factors as per table below:

LUMEN ESTIMATE ADJUSTMENT FACTORS

CCT	3000K	3500K	4000K	5000K
PREMIUM (90CRI)	0.94	0.97	1	1.03

PHOTOMETRIC DATA

PART NUMBER		ZONAL LUMEN SUMMARY			POLAR LUMINOUS INTENSITY	CONE DISTRIBUTION			
AE-SF-G5CA440		Zone	Lumens	% Fixture	Direct Light	Center Beam Fc	Beam Width		
Wattage	40W	0-20°	525.87	12.9		1.7ft	500 fc	5.0 ft	4.8 ft
CCT	4000K	0-30°	1112.9	27.2		3.3ft	133 fc	9.7 ft	9.3 ft
Distribution	120°	0-40°	1816.72	44.4		5.0ft	57.8 fc	14.8 ft	14.0 ft
Length	4ft	0-60°	3194.96	78.1		6.7ft	32.2 fc	19.8 ft	18.8 ft
		0-80°	3971.71	97.1		8.3ft	21 fc	24.5 ft	23.3 ft
		0-90°	4043.77	98.9		10.0ft	14.4 fc	29.5 ft	28.1 ft
					■ Vert. Spread: 111.7° ■ Horiz. Spread: 109.1°				

PHOTOMETRIC DATA - DIFFUSER

PART NUMBER		ZONAL LUMEN SUMMARY			POLAR LUMINOUS INTENSITY	CONE DISTRIBUTION			
AE-SF-G5CA44030/35/40X-DL		Zone	Lumens	% Fixture	Direct Light	Center Beam Fc	Beam Width		
Wattage	40W	0-20°	420.45	11.9		2.5ft	186 fc	6.5 ft	7.2 ft
CCT	4000K	0-30°	882.52	24.9		5.0ft	46.6 fc	12.9 ft	14.5 ft
Distribution	120°	0-40°	1428.38	40.4		7.5ft	20.7 fc	19.4 ft	21.7 ft
Length	4ft	0-60°	2493.86	70.5		10.0ft	11.6 fc	25.8 ft	28.9 ft
		0-80°	3150.06	89		12.5ft	7.45 fc	32.3 ft	36.2 ft
DROP LENS		0-90°	3267.17	92.3		15.0ft	5.17 fc	38.7 ft	43.4 ft
					■ Vert. Spread: 104.5° ■ Horiz. Spread: 110.7°				

PART NUMBER		ZONAL LUMEN SUMMARY			POLAR LUMINOUS INTENSITY	CONE DISTRIBUTION			
AE-SF-G5CA45030/35/40X-WW		Zone	Lumens	% Fixture	Direct Light	Center Beam Fc	Beam Width		
Wattage	50W	0-20°	931.99	13.4		2.5ft	347 fc	3.5 ft	1.4 ft
CCT	4000K	0-30°	2174.46	31.3		5.0ft	86.8 fc	6.9 ft	2.8 ft
Distribution	120°	0-40°	3457.33	49.8		7.5ft	38.6 fc	10.4 ft	4.1 ft
Length	4ft	0-60°	4537.37	65.3		10.0ft	21.7 fc	13.9 ft	5.5 ft
		0-80°	4827.69	69.5		12.5ft	13.9 fc	17.3 ft	6.9 ft
WALL WASH LENS		0-90°	4850.9	69.8		15.0ft	9.65 fc	20.8 ft	8.3 ft
					■ Vert. Spread: 69.5° ■ Horiz. Spread: 30.9°				

LINEAR LED LIGHT

Surface Mount Architectural Linear | 2.5" Aperture | Direct

PHOTOMETRIC DATA - DIFFUSER

PART NUMBER		ZONAL LUMEN SUMMARY			POLAR LUMINOUS INTENSITY	CONE DISTRIBUTION			
AE-SF-G5CA44030/35/40X-P		Zone	Lumens	% Fixture	Direct Light	Center Beam Fc		Beam Width	
Wattage	40W	0-20°	967.59	27.6		2.5ft	178 fc	7.2 ft	6.9 ft
CCT	4000K	0-30°	1905.45	54.4		5.0ft	44.5 fc	14.4 ft	13.8 ft
Distribution	120°	0-40°	2736.19	78.2		7.5ft	19.8 fc	21.7 ft	20.7 ft
Length	4ft	0-60°	3454.72	98.7		10.0ft	11.1 fc	28.9 ft	27.6 ft
PRIME		0-80°	3483.38	99.5		12.5ft	7.11 fc	36.1 ft	34.5 ft
		0-90°	3485.56	99.6		15.0ft	4.94 fc	43.3 ft	41.5 ft
						■ Vert. Spread: 110.6° ■ Horiz. Spread: 108.2°			

PART NUMBER		ZONAL LUMEN SUMMARY			POLAR LUMINOUS INTENSITY	CONE DISTRIBUTION			
AE-SF-G5CA44030/35/40X-PS		Zone	Lumens	% Fixture	Direct Light	Center Beam Fc		Beam Width	
Wattage	40W	0-20	523.96	23.4		2.5ft	233 fc	3.1 ft	5.1 ft
CCT	4000K	0-30	1069.19	47.8		5.0ft	58.4 fc	6.3 ft	10.3 ft
Distribution	120°	0-40	1601.34	71.6		7.5ft	25.9 fc	9.4 ft	15.4 ft
Length	4ft	0-60	2178.89	97.4		10.0ft	14.6 fc	12.5 ft	20.5 ft
PRIME SHADOW		0-80	2230.17	99.7		12.5ft	9.34 fc	15.6 ft	25.6 ft
		0-90	2231.01	99.8		15.0ft	6.49 fc	18.8 ft	30.8 ft
						■ Vert. Spread: 64.0° ■ Horiz. Spread: 91.5°			



DLC MODEL	PRODUCT ID
AE-SF-G5CA44030-35-40010YY-GB	S-ACNDT2

DIMMER COMPATIBILITY LIST

0-10V Dimming

BRAND	MODEL	BRAND	MODEL
LEVITON	IP710-LFZ	LEGRAND	RH4FBL3PTC
	DS710	EATON	WBSD-010SLD
LUTRON	DVS7V-WH	HUBBLE	LHDIRS3N
	MS-Z101		

LINEAR LED LIGHT

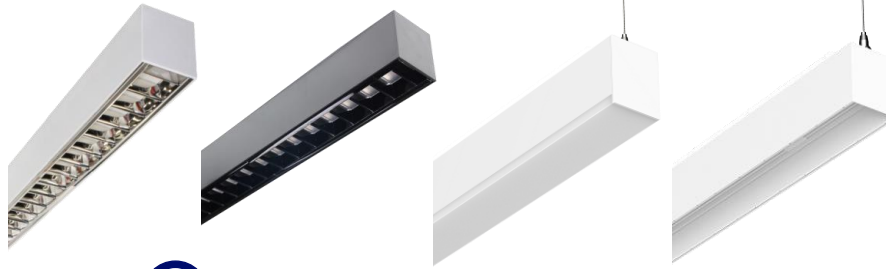
Surface Mount Architectural Linear | 2.5" Aperture | Direct

OVERVIEW



Innovative Design

- Extruded aluminum housing for better heat dissipation.
- Highly durable polycarbonate and high transmittance lens.



Diffusers

- Polycarbonate lens
- Wall-wash lens
- 0.5-inch drop lens
- Black/silver parabolic louver



Multiple Options

- Three CCT switchable options and power tunable.
- Black, white, silver, & gun powder finishes.



Mountings Available

- Suspended (refer to the suspended spec sheet)
- Wall mount (refer to the wall mount spec sheet)
- Surface mount
- Recessed T-grid (refer to the recessed T-grid spec sheet)



Features

- 1% dimming option
- Lutron Hi-lume Ecosystem driver with Soft-on



Tests And Certifications

