

G6

LINEAR LED LIGHT

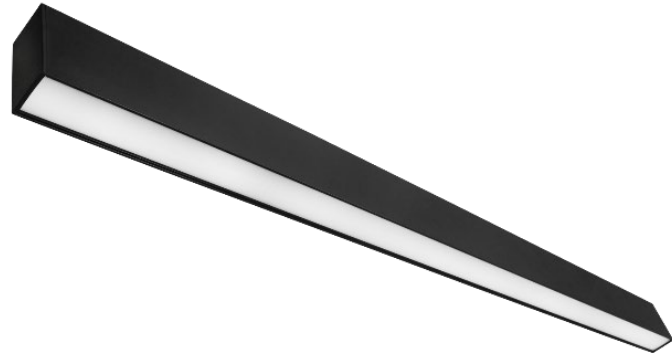
Suspended Architecture Linear | 1.5" Aperture | Direct

The G6 series is a revolutionary compact product features slim profile with the ability to adjust lumen output. Whether its pendant mount or wall mount; Our linear supports continuous runs, creating a unified lighting design that enhances the aesthetic of any environment. Custom designs are achievable; X-T-L shapes, in addition to wall wash optic. Applications: Art Galleries | Office | Retail Stores | Hospitality | Education

	DATE	QTY	ACC. QTY	TYPE
PROJECT				
PN				
ACCESSORY PN				
NOTES				

DYNAMIC MENU	
Order Information	Page 2
Dimensions	Page 4
Accessories	Page 7
Photometric Data	Page 10

[Install Instruction link](#)



SPECIFICATIONS

Input Voltage	120-347V				
Power Factor	>0.9				
Total Harmonic Distortion	<20%				
Dimming Page 6	0-10V dimming				
CRI	90 CRI				
CCT	30K 35K 40K				
Efficacy	~87-91 lm/W Up to 890 lm/ft				
Length	<table border="1"> <tr> <td>2'</td> <td>4'</td> <td>6'</td> <td>8'</td> </tr> </table>	2'	4'	6'	8'
2'	4'	6'	8'		
Power	<table border="1"> <tr> <td>20W</td> <td>40W</td> <td>50W</td> <td>70W</td> </tr> </table>	20W	40W	50W	70W
20W	40W	50W	70W		
Ambient Temperature Range	-10°C to 40°C				
Mounting Options	 Suspended				
Fixture Finish	Black White Silver Gun powder 				
Custom Design	Continuous runs				
Optics	Polycarbonate lens Wall Wash				



PRODUCT FEATURES



PRODUCT CERTIFICATIONS



SYSTEM WARRANTY – 5 YEARS

Eralux will warrant defective drivers, LEDs and boards for 5 years from the date of purchase. This warranty is valid only if the fixture is installed and used as per installation guides and specifications. If a defect is present, Eralux will send drivers and boards at no fee with a thorough replacement instructions along with instructions on the return of the defective parts back to Eralux.

LUMEN MAINTENANCE – L85 at 50,000 hours

Rated for 85% initial lumen output at 50,000 hours of operation, operated at 25°C ambient temperature; per guidelines published by the Illuminating Engineering Society (IES).

LINEAR LED LIGHT

Suspended Architecture Linear | 1.5" Aperture | Direct



ORDERING GUIDE

AE-SF-G6-A-CA		-B-P	30-35-40	-010	
AE-SF-G6-A-CA ERALUX G6 Linear Architectural Fixture 120-347V input voltage	2 20 2ft 20W up to 1,740lm 4 40 4ft 40W up to 3,480lm 6 50 6ft 50W up to 4,350lm 8 70 8ft 70W up to 6,090lm C Continuous length increment of 2ft ¹ (Select or type the length then click on 'C')	-B-P 90 CRI	30-35-40² 3000/3500/4000K selectable	-010 0-10V external dimming down to 10%	-PL Full length polycarbonate -WW³ Wall Wash

Fixture Family	Length Power	CRI	CCT	Dimming	Diffuser
-WH White -BK Black -SV Silver -GN Gun powder	[BLANK] No option LDE1⁴ Fade-to-Black down to 1% EMBB⁵ Emergency battery backup 1DIM⁶ 1% Dimming	-PU -PU18 -PH -PH18	[BLANK] No Canopy -C	[BLANK] Standard 6 FT suspension cables -W18	

Finish	Option	Power Cord	Canopy	Aircraft Cable
--------	--------	------------	--------	----------------

REFER BELOW FOR DETAILED DESCRIPTION FOR SUSPENSIONS KIT

-PU	8ft power cord 120-277V 8ft aircraft cable	-PU18-W18	18ft power cord 120-277V 18ft aircraft cable
-PU-C	8ft power cord 120-277V 8ft aircraft cable 2 pieces of 5-inch canopies	-PU18-C-W18	18ft power cord 120-277V 18ft aircraft cable 2 pieces of 5-inch canopies
-PH	8ft power cord 120-347V 8ft suspension wires	-PH18-W18	18ft power cord 120-347V 18ft suspension wires
-PH-C	8ft power cord 120-347V 8ft aircraft cable 2 pieces of 5-inch canopies	-PH18-C-W18	18ft power cord 120-347V 18ft aircraft cable 2 pieces of 5-inch canopies

NOTES

- For increment of 1ft, contact factory
- Default CCT setting is 3500K but can be changed upon request before shipping.
- Wall wash diffuser comes in single CCT, specify the CCT when ordering.
- LDE1 is a Lutron Hi-lume EcoSystem driver with Soft-on, it requires color selection if not the default CCT, 3500K.
- EMBB option available in 120-277V only.
- 1DIM available only in 120-277V, it works for 4,6,8 FT

CAUTION:

- If there are multiple fixtures connected to the same 0-10V dimming line, a 0-10V controller must be considered to enable consistent dimming across the fixtures. Failure to do so will lead to inconsistent dimming and behaviors in the fixtures. Single switch is not recommended for controlling multiple fixtures simultaneously.
- Maximum of 300W per electrical drop.

LINEAR LED LIGHT

Suspended Architecture Linear | 1.5" Aperture | Direct



ORDERING GUIDE – CUSTOM DESIGN

AE-SF-G6-				-30-35-40	-010	
AE-SF-G6- ERALUX G6 Linear Architectural Fixture	Specify dimension of S1 (Select or type the length)	- Specify dimension of S2 (Select or type the length)	-R Rectangular shape -L L-shape -T T-shape -X X-shape	30-35-40¹ 3000/3500/4000K selectable	-010 0-10V	-WH White -BK Black -SV Silver -GN Gun powder

Fixture Family	Side 1	Side 2	Design	CCT	Dimming	Finish
----------------	--------	--------	--------	-----	---------	--------

Rectangle	X - Shape	L - Shape	T - Shape
For square , S1 equal to S2. S1 & S2 ≥ 2FT	Symmetrical sides	For equal sides , S1 equal to S2.	Symmetrical side

NOTES

- Only available with polycarbonate lens
- For more complex designs, contact factory
- The precise dimensions will be provided by factory upon request or refer to the dimensions in page 6.



ORDERING GUIDE – TRIAC Dimming

AE-SF-G6-A-CA		-B-P		-TRI-PL	
AE-SF-G6-A-CA ERALUX G6 Linear Architectural Fixture	2 15 2ft 20W 3,150lm 4 40 4ft 40W 5,250lm 8 80 6ft 80W 10,500lm	-B-P 90 CRI	30 3000K 35 3500K 40 4000K	-TRI-PL TRIAC Dimming Full length polycarbonate lens	-WH White -BK Black
Fixture Family	Length Power	CRI	CCT	Dimming Lens	Finish

CAUTION:

- If there are multiple fixtures connected to the same 0-10V dimming line, a 0-10V controller must be considered to enable consistent dimming across the fixtures. Failure to do so will lead to inconsistent dimming and behaviors in the fixtures. Single switch is not recommended for controlling multiple fixtures simultaneously.
- Maximum of 300W per electrical drop.

LINEAR LED LIGHT

Suspended Architecture Linear | 1.5" Aperture | Direct

DIMENSIONS

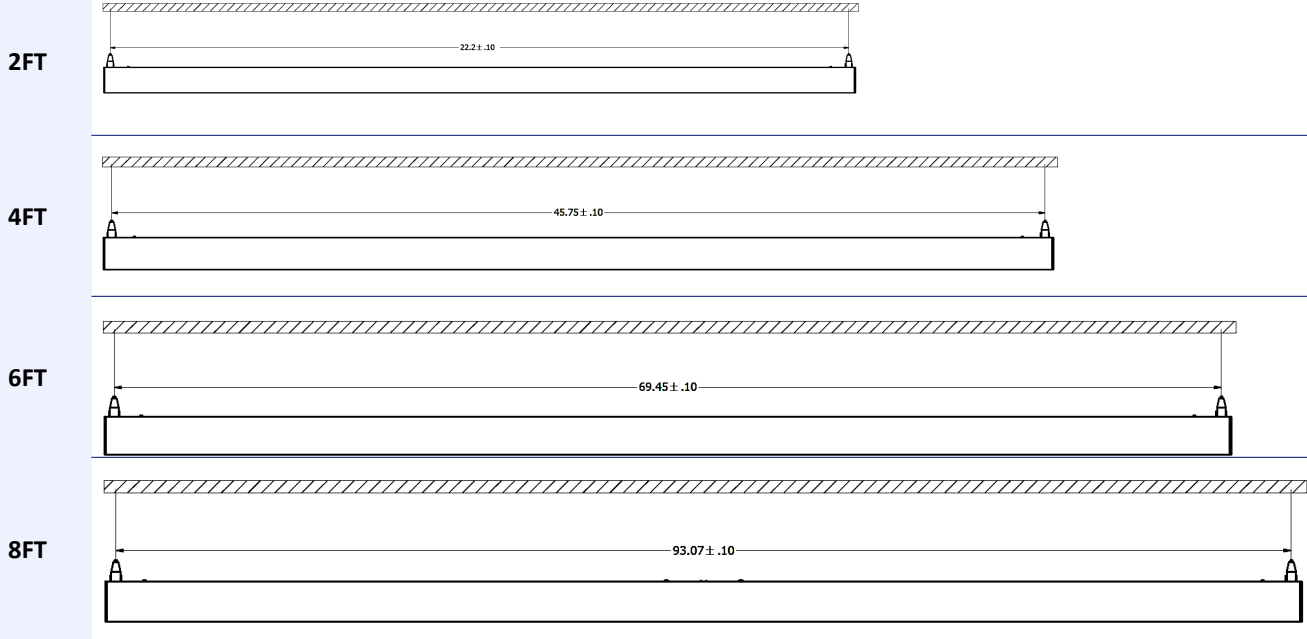
SIZE	TOP/BOTTOM VIEW	SIDE VIEW
2FT		
3FT		
4FT		
6FT		
8FT		

LINEAR LED LIGHT

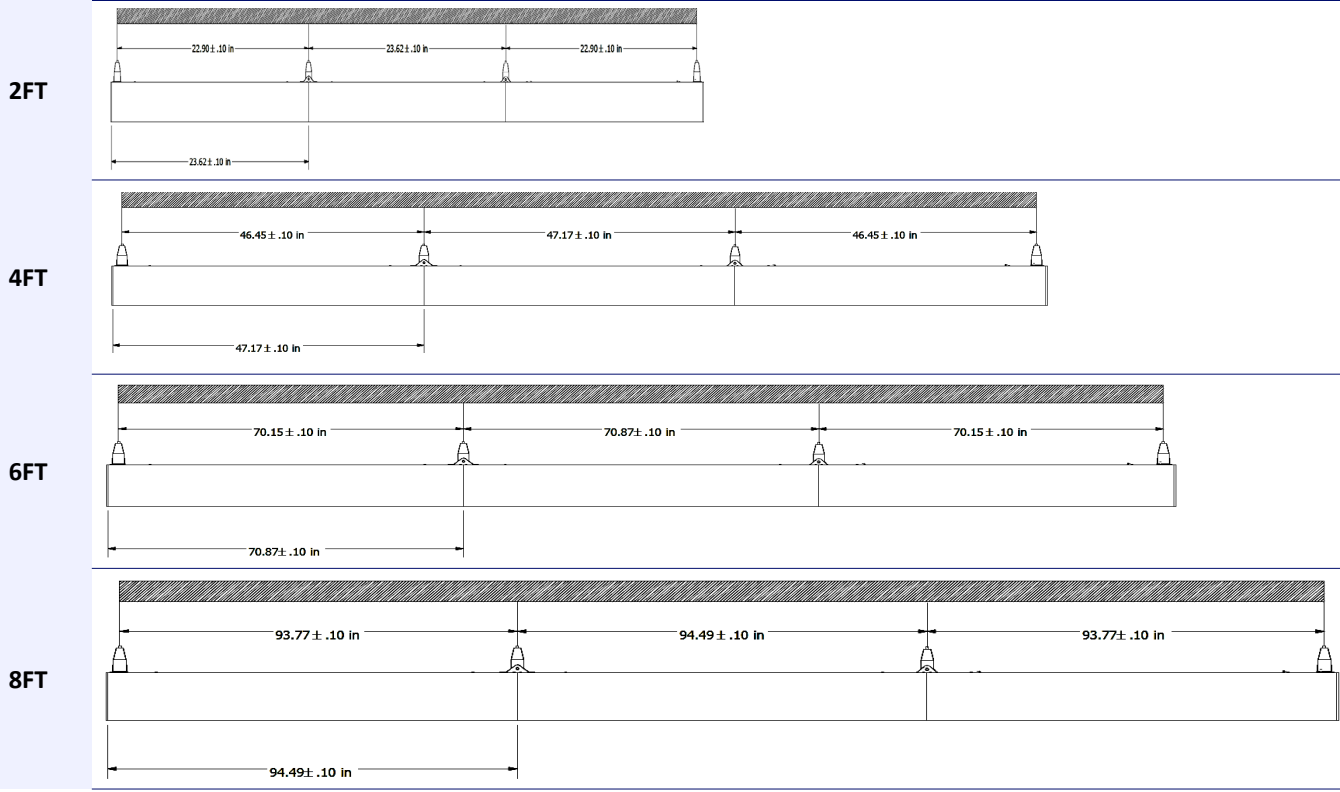
Suspended Architecture Linear | 1.5" Aperture | Direct

DRILLING PATTERN

SIZE STAND ALONE INSTALLATION



SIZE CONTINUOUS RUN INSTALLATION



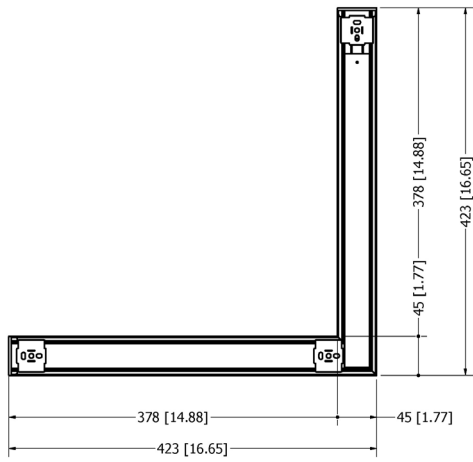
LINEAR LED LIGHT

Suspended Architecture Linear | 1.5" Aperture | Direct

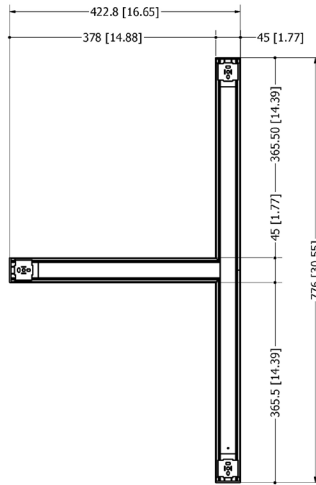
DIMENSIONS Custom Design

SHAPES

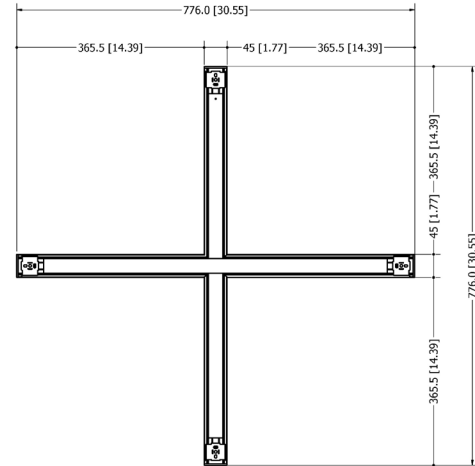
L-SHAPE
AE-SF-G6-1-1-L



T-SHAPE
AE-SF-G6-1-1-T



X-SHAPE
AE-SF-G6-1-1-X



DIMMER COMPATIBILITY LIST

0-10V Dimming

BRAND	MODEL	BRAND	MODEL
LEVITON	IP710-LFZ	LEGRAND	RH4FBL3PTC
	DS710	EATON	WBSD-010SLD
LUTRON	DVS7V-WH	HUBBLE	LHDIRS3N
	MS-Z101		

LINEAR LED LIGHT

Suspended Architecture Linear | 1.5" Aperture | Direct

ACCESSORIES FOR SUSPENDED

Ordered separately if needed

POWER CORD

ORDER CODE	DESCRIPTION	PICTURE
AE-SF-PWRCORD-WH AE-SF-PWRCORD-BK	8' white / black power cord with 120-277V input voltage	
AE-SF-PWRCORD-WH-18FT AE-SF-PWRCORD-BK-18FT	18' white / black power cord with 120-277V input voltage	
AE-SF-PWRCORD-HV-WH AE-SF-PWRCORD-HV-BK	8' white / black power cord with 120-347V input voltage	
AE-SF-PWRCORD-WH-18FT AE-SF-PWRCORD-BK-18FT	18' white / black power cord with 120-277V input voltage	

CANOPY

ORDER CODE	DESCRIPTION	PICTURE
AE-SF-CANOPY-WH-5IN AE-SF-CANOPY-BK-5IN	2 pieces per set white / black 5" canopy 0.8" thickness One for power cord/aircraft cable and one for aircraft cable	
AE-SF-CANOPY-WH-5IN-SUSP AE-SF-CANOPY-BK-5IN-SUSP	1 piece white / black 5" canopy 0.8" thickness for aircraft cable	
AE-SF-CANOPY-WH-ELITE AE-SF-CANOPY-BK-ELITE	2 pieces per set white / black 5" canopy 0.3" thickness One for power cord/aircraft cable and one for aircraft cable	

AIRCRAFT CABLE

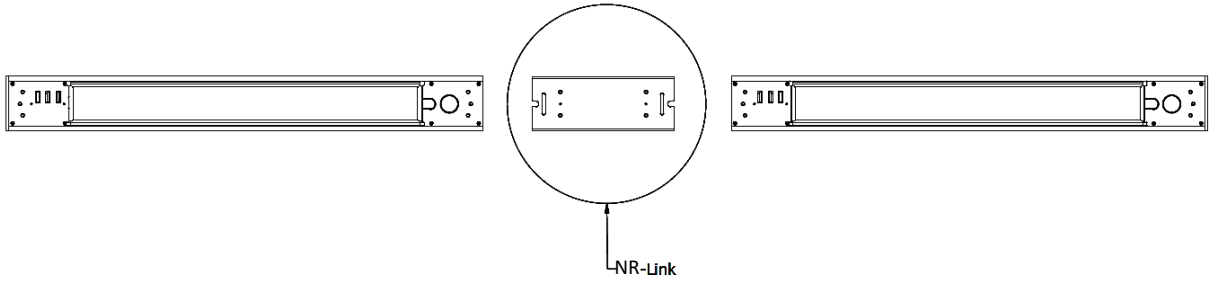
ORDER CODE	DESCRIPTION	PICTURE
AE-SF-G6/SPS-WIRE-8FT	8ft aircraft cable 2 pieces per set 1 set / fixture	
AE-SF-G6/SPS-WIRE-18FT	18ft aircraft cable 2 pieces per set 1 set / fixture	

LINEAR LED LIGHT

Suspended Architecture Linear | 1.5" Aperture | Direct

ACCESSORIES

For Continuous Run



NR-LINK	
ORDER CODE	DESCRIPTION
AE-SF-LINK-NR	Seamless mechanical connection for continuous runs Preventing Light Leakage Easy installation

DIFFUSER OPTIONS

Wall Wash Lens	
Description	Pictures

The wall washing is a feature where the luminaire is typically positioned at least 12" from the wall to enhance the smoothness of a wall by eliminating shadows or to highlight a wall to create visual interest. The wall wash lens is available for all continuous sizes; 4FT and 8FT.



LINEAR LED LIGHT

Suspended Architecture Linear | 1.5" Aperture | Direct

CONTROLS

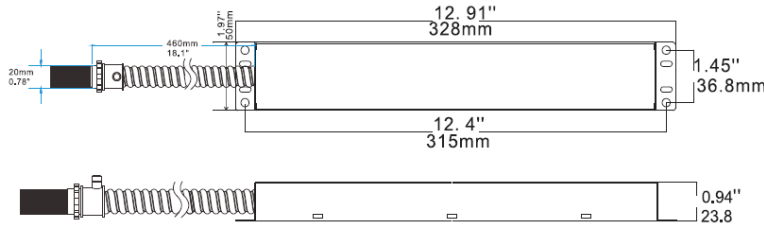
Ordered separately, field installed

EMERGENCY LED DRIVER (BLD-HMXXD-YYY)

BLD-HM8D-YYY



The BLD-HMXXD-YYY series LED Emergency Driver is UL listed for field and factory installations. It switches to emergency mode during power failures, providing up to 90 minutes of lighting. With an integrated battery, charger, and converter, it delivers 6-25W constant power at 170VDC. Ideal for 0-10V dimmable indoor commercial LED fixtures, such as flat panels, troffers, downlights, and linear strip lights.

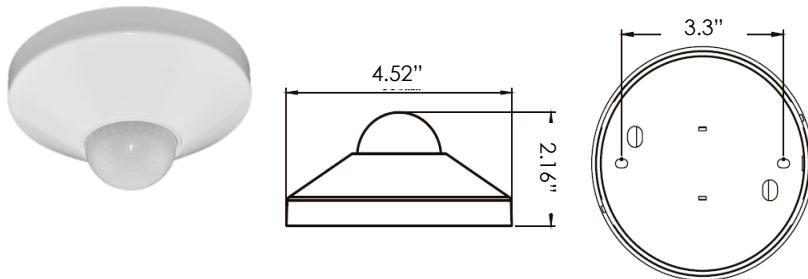


SPECIFICATIONS	
Input Voltage	100-347 Vac
Power Frequency	50/60HZ
Input Power	8W max
Output Voltage	170V Dc
Output Power	8W
Ambient Temperature	0°C to 50°C
	30°F to 122°F
Installation	Remote

ROOM OCCUPANCY SENSOR

Ordered separately, field installed

PART NUMBER	DESCRIPTION
AE-CT-DT806	Detecta - Room Occupancy Sensor
RC102	RC102 Remote Control



SPECIFICATIONS	
Input Voltage	120-277 Vac
Power Frequency	50/60HZ
Rated Load	At 120 Vac 800W
	At 277 Vac 1200W
Detection Range	3-10 Meters
	9.8- 32.8 Feet
Standby Power	~0.9W
Time Setting	10 sec to 30 min
Light Control	10-2,000LUX
Installation	Ceiling Mounted

LINEAR LED LIGHT

Suspended Architecture Linear | 1.5" Aperture | Direct

LUMEN ESTIMATE

Lumen output varies based on CCT and CRI. An estimate of lumen output of the various CCT/CRI combinations, use correction factors as per table below:

LUMEN ESTIMATE ADJUSTMENT FACTORS

CCT	3000K	3500K	4000K	5000K
PREMIUM (90CRI)	0.94	0.97	1	1.03

PHOTOMETRIC DATA

PART NUMBER		ZONAL LUMEN SUMMARY			POLAR LUMINOUS INTENSITY	CONE DISTRIBUTION			
AE-SF-G6-A-CA-440		Zone	Lumens	% Fixture	Direct Light	Center Beam Fc	Beam Width		
Wattage	40W	0-20°	529.17	14.70		2.5ft	236 fc	6.2 ft	5.3 ft
CCT	3000K	0-30°	1098.74	30.50		5.0ft	58.9 fc	12.4 ft	10.5 ft
Distribution	95°	0-40°	1749.95	48.60		7.5ft	26.2 fc	18.6 ft	15.8 ft
Length	4ft	0-60°	2921.83	81.20		10.0ft	14.7 fc	24.8 ft	21.0 ft
		0-80°	3490.93	97.00		12.5ft	9.43 fc	31.0 ft	26.3 ft
		0-90°	3530.26	98.10		15.0ft	6.55 fc	37.2 ft	31.6 ft
							■ Vert. Spread: 102.2° ■ Horiz. Spread: 92.9°		
AE-SF-G6-A-CA-440		Zone	Lumens	% Fixture	Direct Light	Center Beam Fc	Beam Width		
Wattage	50W	0-20°	549.91	16.2		2.5ft	250 fc	5.8 ft	4.7 ft
CCT	3500K	0-30°	1130.73	33.4		5.0ft	62.4 fc	11.6 ft	9.4 ft
Distribution	95°	0-40°	1782.06	52.6		7.5ft	27.7 fc	17.3 ft	14.1 ft
Length	4ft	0-60°	2902.16	85.7		10.0ft	15.6 fc	23.1 ft	18.8 ft
		0-80°	3382.01	99.8		12.5ft	9.99 fc	28.9 ft	23.5 ft
		0-90°	3387.73	100		15.0ft	6.94 fc	34.7 ft	28.2 ft
							■ Vert. Spread: 98.3° ■ Horiz. Spread: 86.6°		
AE-SF-G6-A-CA-440		Zone	Lumens	% Fixture	Direct Light	Center Beam Fc	Beam Width		
Wattage	40W	0-20°	566.92	16.20		2.5ft	257 fc	5.8 ft	4.7 ft
CCT	4000K	0-30°	1165.7	33.40		5.0ft	64.3 fc	11.6 ft	9.4 ft
Distribution	95°	0-40°	1837.18	52.60		7.5ft	28.6 fc	17.3 ft	14.1 ft
Length	4ft	0-60°	2991.91	85.70		10.0ft	16.1 fc	23.1 ft	18.8 ft
		0-80°	3486.6	99.80		12.5ft	10.3 fc	28.9 ft	23.5 ft
		0-90°	3492.5	100.00		15.0ft	7.15 fc	34.7 ft	28.2 ft
							■ Vert. Spread: 98.3° ■ Horiz. Spread: 86.6°		
AE-SF-G6-A-CA-440		Zone	Lumens	% Fixture	Direct Light	Center Beam Fc	Beam Width		
Wattage	50W	0-20°	395.54	15.7		2.5ft	176 fc	5.8 ft	3.8 ft
CCT	3500K	0-30°	819.37	32.6		5.0ft	44.1 fc	11.6 ft	7.7 ft
Distribution	95°	0-40°	1291.53	51.3		7.5ft	19.6 fc	17.4 ft	11.5 ft
Length	4ft	0-60°	2078.68	82.6		10.0ft	11 fc	23.2 ft	15.3 ft
		0-80°	2461.84	97.8		12.5ft	7.05 fc	29.0 ft	19.2 ft
		0-90°	2488.97	98.9		15.0ft	4.9 fc	34.8 ft	23.0 ft
							■ Vert. Spread: 98.4° ■ Horiz. Spread: 75.0°		

LINEAR LED LIGHT

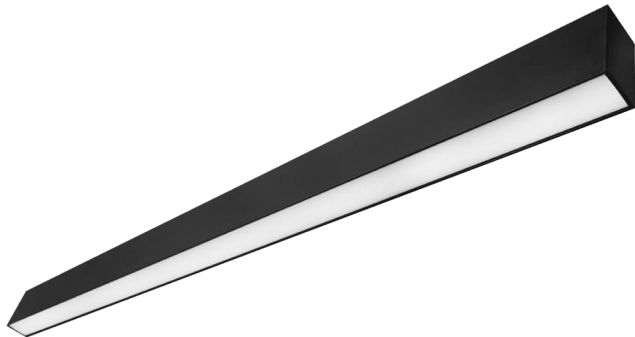
Suspended Architecture Linear | 1.5" Aperture | Direct

OVERVIEW



Innovative Design

- Slim extruded aluminum housing for better heat dissipation.
- Highly durable polycarbonate and high transmittance lens.



Diffusers

- Polycarbonate lens
- Wall-wash lens



Multiple Options

- Four standard length available; 2, 4, 6, & 8ft.
- Three CCT switchable and power tunable.
- Black, white, silver, & gun powder finishes.



Emergency backup battery



Mountings Available

- Suspended.
- Wall mount (refer to the wall-mount spec sheet)



Features

- 1% dimming option
- Lutron Hi-lume Ecosystem driver with Soft-on



Tests And Certifications

