

HERCULES

OUTDOOR PRODUCTS

Outdoor stadium light



The Hercules Series LED luminaire is designed to show off your stadium and athletic field lighting needs. It offers a superior efficacy of up to 130 LPW with multiple CCT and beam angle variations at both 120-277V, and 200-480V. Its bracket mount, optional visor, and laser positioning tool will allow you to be able to focus the light to maximize your space. It is designed to outshine its competitors which is why it is the perfect luminaire for your outdoor sporty location.

eralux®

IP 66

5 YEARS
WARRANTY
eralux



DATE

PROJECT NAME

TYPE

QTY

ORDERING
CODE

AE-OD-HC

-A-Z -

OPERATING & ELECTRICAL

INPUT VOLTAGE 120-277Vac, 240-480Vac

POWER FACTOR 0.95

DIMMING No dimming

TOTAL HARMONIC
DISTORTION (THD) <20%

PERFORMANCE

LUMENS PER WATT 130 LPW at >70CRI

POWER 400W, 500W, 750W, 1000W, 1250W

BEAM ANGLE 15°, 30°, 45°, 80°

MECHANICAL & HOUSING

HOUSING

Aluminum die-cast for excellent thermal management and dissipation essential for long lasting, rigid structure and LED driver.

LENS

UV resistant, polycarbonate lens ensures high efficiency light output for a clean, evenly illuminated surface with minimal glare. High transmittance lens allowing for a smooth, diffused light pattern.

FINISH

Powder coat finish for the toughest outdoor conditions. Available in ERALUX black color option.

POWER SUPPLY

Factory wired electronic LED driver

LED BOARD

Light emitted source

APPLICATION CONDITION

AMBIENT TEMPERATURE
RANGE

-40 °C to 50°C

PROTECTION

LED fixture IP66 rated

COMPATIBLE MOUNTING

MOUNTING

240° adjustable U-bracket

WARRANTY

SYSTEM WARRANTY – 5 YEARS

Eralux will warrant defective drivers, LEDs and boards for 5 years from the date of purchase. This warranty is valid only if the fixture is installed and used as per installation guides and specifications. If a defect is present, Eralux will send drivers and boards at no fee with a thorough replacement instructions along with instructions on the return of the defective parts back to Eralux.

LUMEN MAINTENANCE – L70 at 50,000 hours

Rated for 70% initial lumen output at 50,000 hours of operation, operated at 25°C ambient temperature; per guidelines published by the Illuminating Engineering Society (IES)

eralux® HERCULES

OUTDOOR PRODUCTS

Outdoor stadium light

DATE	
PROJECT NAME	
TYPE	
QTY	
ORDERING CODE	AE-OD-HC
	-A-Z -

ORDERING GUIDE

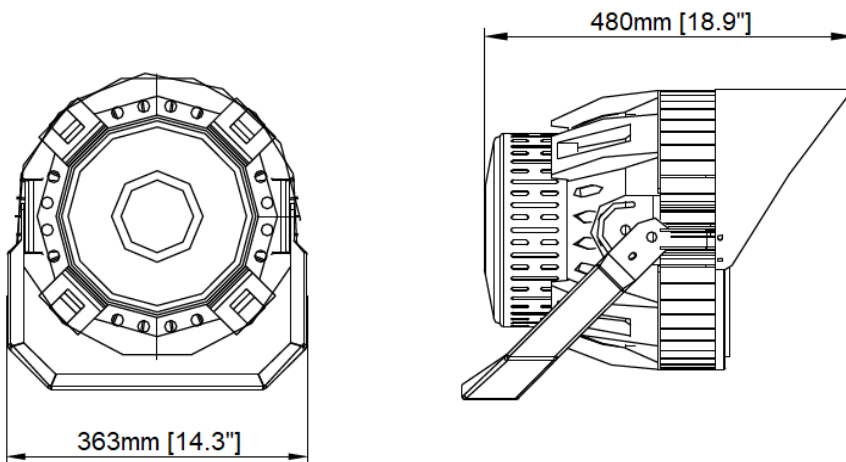
EXAMPLE: AE-OD-HC400W-UV-A-Z-4000K30

FIXTURE FAMILY	POWER	CONTROLS	VOLTAGE	DRIVER COMPARTMENT	CCT	BEAM ANGLE	
AE-OD-HC		-		-A-Z-			
AE-OD-HC ERALUX Hercules Series LED stadium light fixture	400W 400 watts: 52,000 lumens	-[LEAVE BLANK] No dimming	UV 120-277Vac input voltage range	A-Z- Driver compartment	4000K 4000K CCT	15 15° beam angle	
						30 30° beam angle	
						45 45° beam angle	
						15 15° beam angle	
	500W 500 watts: 65,000 lumens						
	750W 750 watts: 97,500 lumens						
	1000W 1000 watts: 130,000 lumens				HV 200-480Vac input voltage range	5000K 5000K CCT	20 20° beam angle
			25 25° beam angle				
1250W 1250 watts: 162,500 lumens			6500K 6500K CCT	40 40° beam angle			

PRODUCT DIMENSIONS

400W-500W

Weight: 14Kg



EPA:

Side EPA	Front EPA	Top EPA
1.33Ft²	1.40Ft²	1.59Ft²

eralux® HERCULES

OUTDOOR PRODUCTS

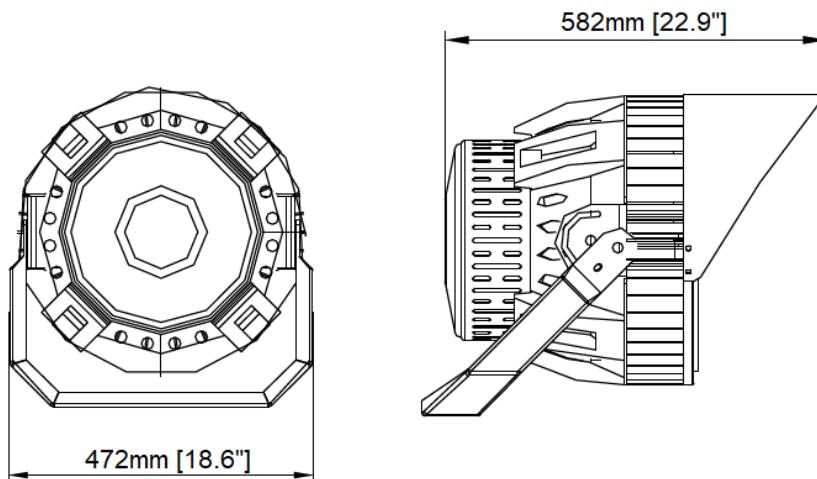
Outdoor stadium light

DATE					
PROJECT NAME					
TYPE					
QTY					
ORDERING CODE	AE-OD-HC		-A-Z	-	

PRODUCT DIMENSIONS

750W-1250W

Weight: 27Kg



EPA:

Side EPA	Front EPA	Top EPA
1.90Ft ²	2.70Ft ²	2.30Ft ²

ACCESSORIES

Ordered separately, field installed

FIXTURE FAMILY	GUARD
AE-WP-HC	-
AE-OD-HC ERALUX HERCULES Series outdoor stadium light fixture	-LASER Laser positioning system – 1 unit – Black finish
	-SF Split fitter mounting bracket – 1unit – Black finish

DATE	
PROJECT NAME	
TYPE	
QTY	
ORDERING CODE	AE-OD-HC -A-Z -

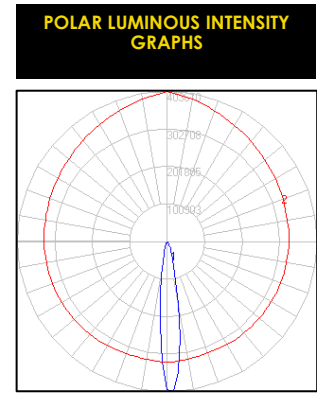
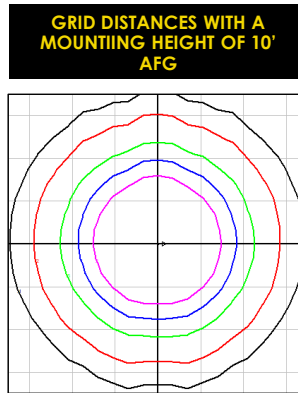
LUMEN ESTIMATE

Lumen output varies based on CCT and CRI. An estimate of lumen output of the various CCT/CRI combinations, use correction factors as per table below:

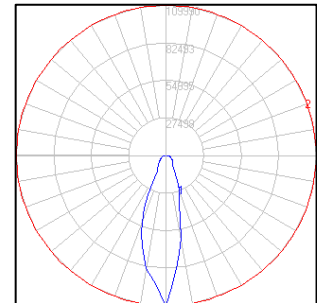
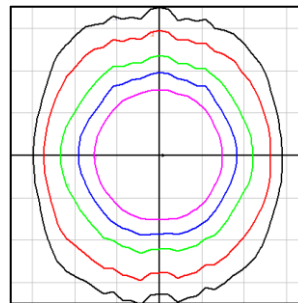
LUMEN ESTIMATE ADJUSTMENT FACTORS				
CCT	3000K	3500K	4000K	5000K
NORMAL (80CRI)	0.94	0.97	1	1.03

PHOTOMETRIC DATA

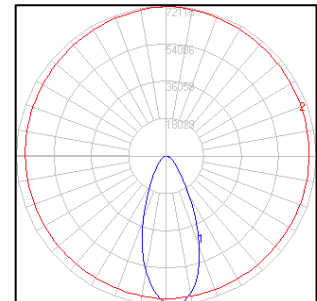
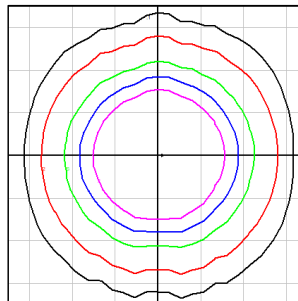
AE-OD-HC-400W-UV-A-Z-5000K15



AE-OD-HC-400W-UV-A-Z-5000K30



AE-OD-HC-400W-UV-A-Z-5000K45



eralux® HERCULES

OUTDOOR PRODUCTS

Outdoor stadium light

DATE					
PROJECT NAME					
TYPE					
QTY					
ORDERING CODE	AE-OD-HC		-A-Z	-	

OVERVIEW



COMPONENTS

Components selected to provide high-output, high-efficacy illumination. LED fixture and driver are IP66 ensuring durability through tough environmental conditions.

RADIATOR VENTILATION

Seamless link of aero-metal materials, and numerous vents on the fixture's heat sink provide superior thermal heat management, and dissipate heat from the field.

SOLID STATE DESIGN

Unique and advanced design had no fixed components. All parts are rugged, strong, and removable if needed for servicing.

INTERFERENCE

Ultra-low EMI noise generation eliminates electrical interference.