

# LEONARDO

OUTDOOR PRODUCTS  
BOLLARD

The Leonardo bollard is an elegant solution for your outdoor area lighting needs. Its robust and strong materials allow it to withstand the harshest of elements without a scratch. The Leonardo features an innovative optical system providing illumination to your space while keeping the beam shielded from the eye.



eralux®



DATE	
PROJECT NAME	
<b>TYPE</b>	
QTY	
ORDERING CODE	AE-OD-LD - - -80 - -

## OPERATING & ELECTRICAL

INPUT VOLTAGE	120-240Vac 120-277 Vac
POWER FACTOR	0.9
DIMMING	No dimming
TOTAL HARMONIC DISTORTION (THD)	<20%

## MECHANICAL & HOUSING

HOUSING	Corrosion-resistant aluminum-cast housing and plate for mounting. Concrete anchor for mounting.
LENS	Glass lens ring
FINISH	Thermoset powder coat finish that provides superior resistance to corrosion and weathering. Minimum 3mm thickness for a finish that provides anti-cracking and peeling from weather further enhanced with a marine grade corrosion resistant finish.

## PERFORMANCE OPTIONS



### GFCI OPTION

Factory installed GFCI provision and in-use cover in the side of the luminaire 15A, 125V

## APPLICATION CONDITION

AMBIENT TEMPERATURE RANGE	-25 °C to 50°C
DIMMING	N/A
PROTECTION	IP65, thermally-insulated driver

## COMPATIBLE MOUNTING

MOUNTING	Concrete anchor mounted on aluminum-cast plate
----------	--

## WARRANTY

### SYSTEM WARRANTY – 5 YEARS

Eralux will warrant defective drivers, LEDs and boards for 5 years from the date of purchase. This warranty is valid only if the fixture is installed and used as per installation guides and specifications. If a defect is present, Eralux will send drivers and boards at no fee with a thorough replacement instructions along with instructions on the return of the defective parts back to Eralux.

### LUMEN MAINTENANCE – L70 at 50,000 hours

Rated for 70% initial lumen output at 50,000 hours of operation, operated at 25°C ambient temperature; per guidelines published by the Illuminating Engineering Society (IES)

# eralux® LEONARDO

OUTDOOR PRODUCTS  
BOLLARD

DATE	
PROJECT NAME	
<b>TYPE</b>	
QTY	
ORDERING CODE	AE-OD-LD - - -80 - -

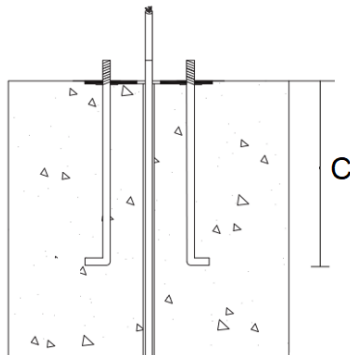
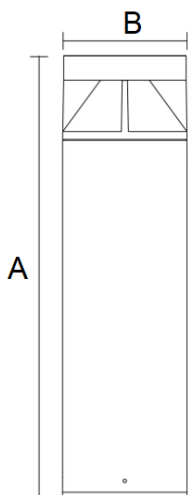
## ORDERING GUIDE

EXAMPLE: AE-OD-LD35-C5-32-6-3-80-B-M

FIXTURE FAMILY	POWER & SIZE	CCT	CRI	HOUSING & FINISH	OPTION
<b>AE-OD-LD</b>	-	-	<b>-80</b>	-	
<b>AE-OD-LD35</b> Outdoor products Leonardo Bollard Fixture	<b>-C5-32-6</b> 120-240Vac 5 watts: 168 lumens 32" height 6" diameter	<b>-3</b> 3000K CCT	<b>-80</b> 80 CRI	<b>-B-M</b> Thermoset powder coat graphite black aluminum-cast housing with marine corrosion resistant finish	<b>-BLANK</b> No Option
<b>AE-OD-LD36</b> Outdoor products Leonardo Bollard Fixture	<b>-C15-42-8</b> 120-277Vac 15 watts: 402 lumens 42" height 8" diameter <b>*1-10V Dimming for 20W option only</b>	<b>-4</b> 4000K CCT	<b>-Z-M</b> Thermoset powder coat mineral bronze aluminum-cast housing with marine corrosion resistant finish	<b>-W-M</b> ERALUX nebula white thermoset cast housing with marine corrosion resistant finish*	<b>-GC</b> GFCI Outlet Option
		<b>-5</b> 5000K CCT			
		<b>-S-M</b> Aluminum (RAL9006) thermoset cast housing with marine corrosion resistant finish*			

\*Contact for lead-times and availability

## PRODUCT DIMENSIONS



Product Dimensions			
Power	A	B	C
5W	32" [813]	5.5" [140]	7.87" [200]
15W	42" [1067]	7.87" [200]	7.87" [200]

eralux®  
**LEONARDO**

OUTDOOR PRODUCTS  
BOLLARD

DATE					
PROJECT NAME					
<b>TYPE</b>					
QTY					
ORDERING CODE	AE-OD-LD	-	-	-80	-

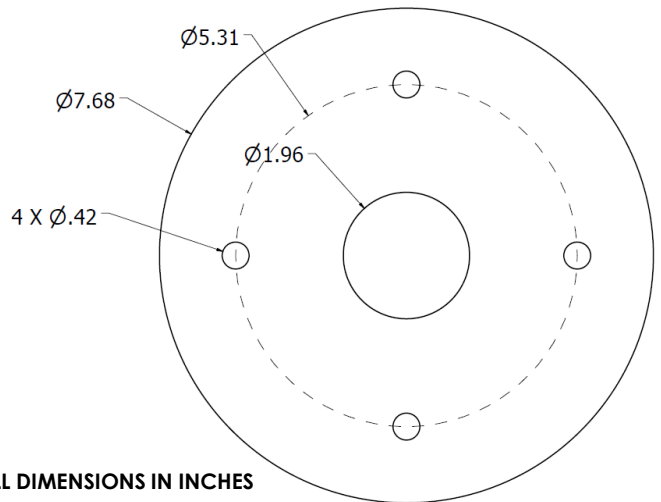
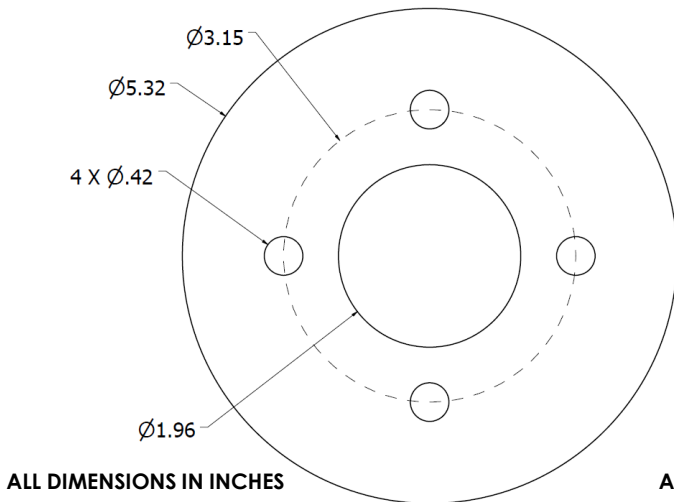
**B-U-G RATING**

Power	BUG Rating
5W	B0-U1-G1
15W	B0-U1-G1

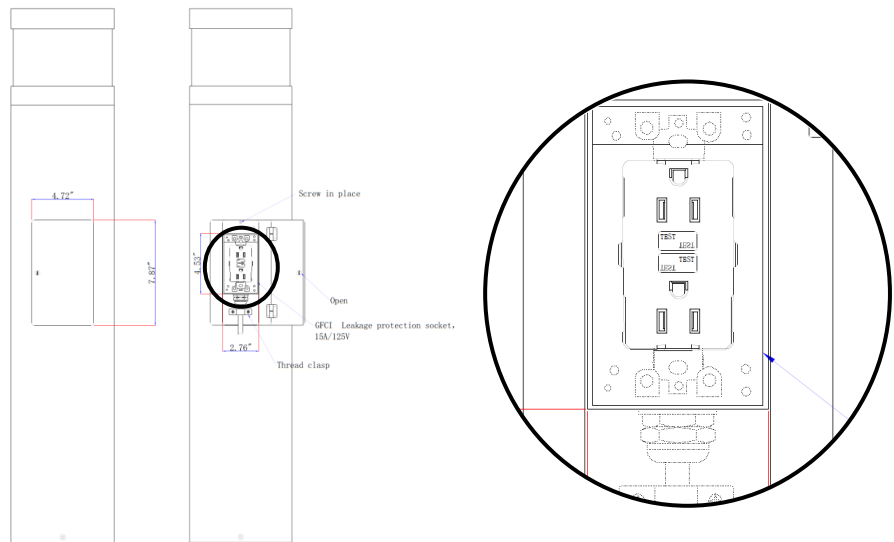
**ANCHOR BOLT PATTERN**

6-inch Base

8-inch Base



**GFCI OUTLET OPTION**



eralux®  
**LEONARDO**

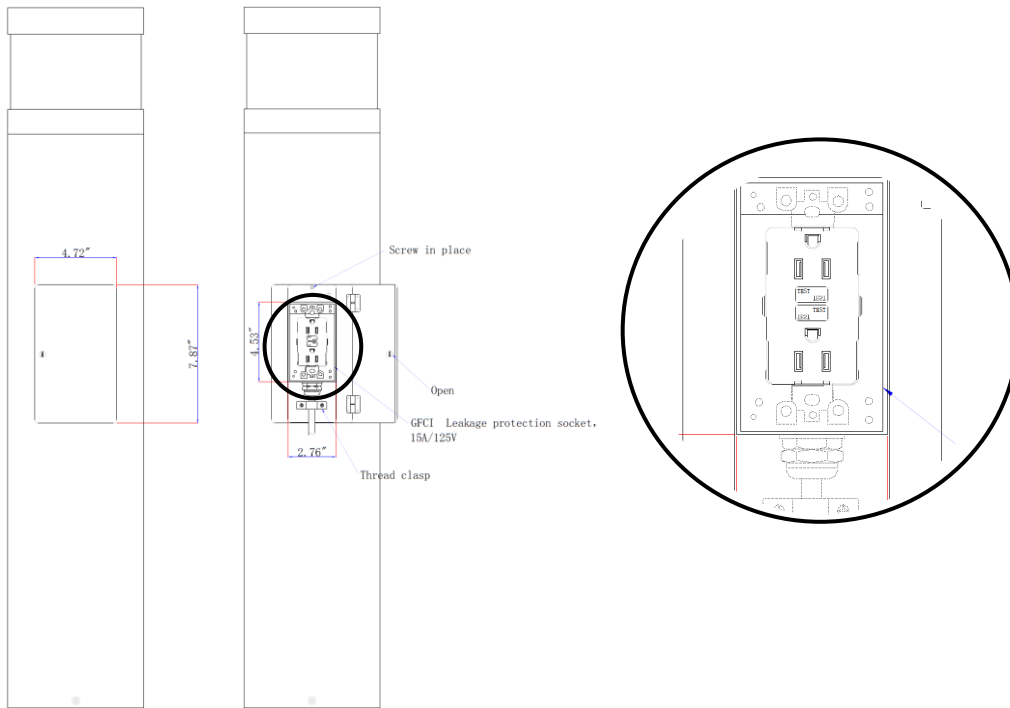
OUTDOOR PRODUCTS  
 BOLLARD

DATE						
PROJECT NAME						
<b>TYPE</b>						
QTY						
ORDERING CODE	AE-OD-LD	-	-	-80	-	-

**GFCI OUTLET OPTION**

Factory installed GFCI outlet option, output voltage 120V with safety flap.

Exterior cover easy locking system sealed from water intrusion.



DATE						
PROJECT NAME						
<b>TYPE</b>						
QTY						
ORDERING CODE	AE-OD-LD	-	-	-80	-	-

## LUMEN ESTIMATE

Lumen output varies based on CCT and CRI. An estimate of lumen output of the various CCT/CRI combinations, use correction factors as per table below:

### LUMEN ESTIMATE ADJUSTMENT FACTORS

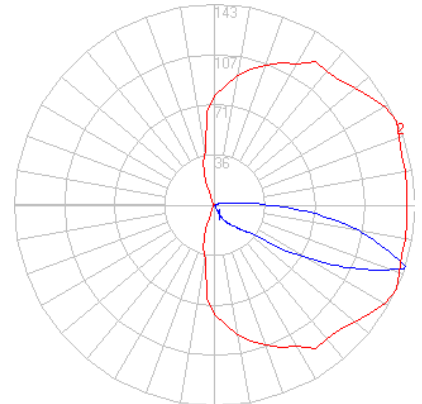
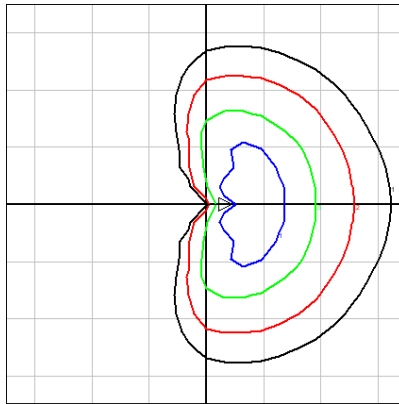
CCT	2700K	3000K	3500K	4000K
NORMAL (80CRI)	.91	.94	.97	1

## PHOTOMETRIC DATA

### GRID DISTANCES WITH A MOUNTING HEIGHT OF 32" AFG

### POLAR LUMINOUS INTENSITY GRAPHS

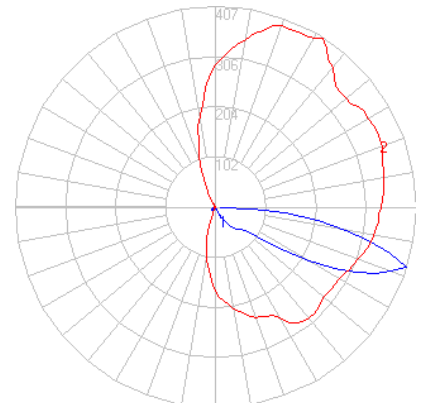
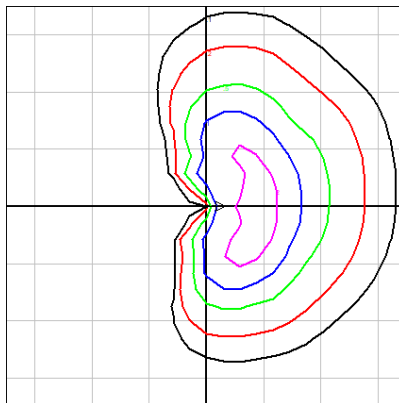
AE-OD-LD35-C5-32-6-3-80-X-M



### GRID DISTANCES WITH A MOUNTING HEIGHT OF 42" AFG

### POLAR LUMINOUS INTENSITY GRAPHS

AE-OD-LD36-C15-42-8-3-80-X-M



eralux®  
**LEONARDO**

OUTDOOR PRODUCTS  
BOLLARD

DATE	
PROJECT NAME	
<b>TYPE</b>	
QTY	
ORDERING CODE	AE-OD-LD - - -80 - -

## OVERVIEW



### **MULTIPLE SIZES**

Available in 6 and 8" diameter bore sizes, with heights of 32 and 42" depending on the lumen package selected.

### **PREMIUM MATERIALS**

Aluminum die-cast housing and plate for enhanced thermal heat dissipation and structural integrity.

### **CORROSION RESISTANT FINISH**

Thermoset powder coat finish combined with anti-cracking marine grade corrosion resistant finish to withstand harsh environmental conditions.

### **OPTICAL GLASS**

180-degree optical polymer.