

RAPHAEL

OUTDOOR PRODUCTS
BOLLARD

The RAPHAEL bollard is an elegant solution for your outdoor area lighting needs. Its robust and strong materials allow it to withstand the harshest of elements without a scratch. The Raphael features an innovative optical system providing illumination to your space while keeping the beam shielded from the eye.



eralux®



DATE	
PROJECT NAME	
TYPE	
QTY	
ORDERING CODE	AE-OD-RL - - -80 - -

OPERATING & ELECTRICAL

INPUT VOLTAGE	120-240 Vac 120-277 Vac
POWER FACTOR	0.9
DIMMING	No dimming
TOTAL HARMONIC DISTORTION (THD)	<20%

MECHANICAL & HOUSING

HOUSING	Corrosion-resistant aluminum-cast housing and plate for mounting. Concrete anchor for mounting.
LENS	Glass lens ring
FINISH	Thermoset powder coat finish that provides superior resistance to corrosion and weathering. Minimum 3mm thickness for a finish that provides anti cracking and peeling from weather further enhanced with a marine finish coat.

PERFORMANCE OPTIONS

GFCI OPTION	Factory installed GFCI provision and in-use cover in the side of the luminaire 15A, 125V
-------------	---

APPLICATION CONDITION

AMBIENT TEMPERATURE RANGE	-25 °C to 50°C
PROTECTION	IP65, thermally-insulated driver

COMPATIBLE MOUNTING

MOUNTING	Concrete anchor mounted on aluminum-cast plate
----------	--

WARRANTY

SYSTEM WARRANTY – 5 YEARS

Eralux will warrant defective drivers, LEDs and boards for 5 years from the date of purchase. This warranty is valid only if the fixture is installed and used as per installation guides and specifications. If a defect is present, Eralux will send drivers and boards at no fee with a thorough replacement instructions along with instructions on the return of the defective parts back to Eralux.

LUMEN MAINTENANCE – L70 at 50,000 hours

Rated for 70% initial lumen output at 50,000 hours of operation, operated at 25°C ambient temperature; per guidelines published by the Illuminating Engineering Society (IES)

eralux® RAPHAEL

OUTDOOR PRODUCTS
BOLLARD

DATE	
PROJECT NAME	
TYPE	
QTY	
ORDERING CODE	AE-OD-RL - - -80 - -

ORDERING GUIDE

EXAMPLE: AE-OD-RL23-C10-32-6-3-80-B-M

FIXTURE FAMILY	POWER & SIZE	CCT	CRI	HOUSING & FINISH	OPTION
AE-OD-RL	-	-	-80	-	
AE-OD-RL23 Outdoor products Raphael Bollard Fixture	-C10-32-6 120-240Vac 10 watts: 267 lumens 32" height; 6" diameter	-3 3000K CCT	-80 80 CRI	-B-M Thermoset powder coat graphite black aluminum-cast housing with marine corrosion resistant finish	-BLANK No Option
AE-OD-RL24 Outdoor products Raphael Bollard Fixture	-C20-42-8 120-277Vac 20 watts: 796 lumens 42" height; 8" diameter *1-10V Dimming for 20W option only	-4 4000K CCT		-Z-M Thermoset powder coat mineral bronze aluminum-cast housing with marine corrosion resistant finish	-GC GFCI Outlet Option
	-C35-42-8 120-277Vac 35 watts: 1273 lumens 42" height; 8" diameter	-5 5000K CCT		-W-M ERALUX nebula white thermoset cast housing with marine corrosion resistant finish*	
				-S-M Aluminum (RAL9006) thermoset cast housing with marine corrosion resistant finish*	

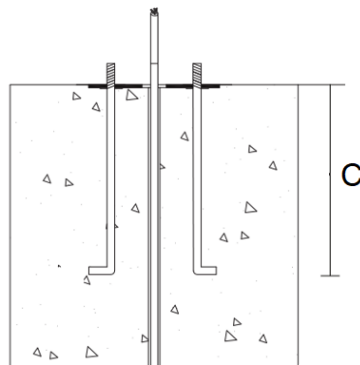
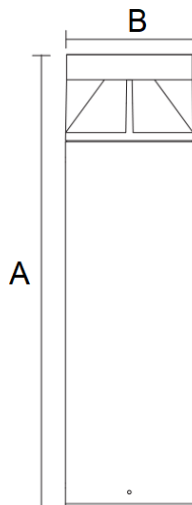
*Contact for lead-times and availability

PRODUCT DIMENSIONS

AE-OD-RL23, AE-OD-RL24

Product Dimensions

Power	A	B	C
10W	33" [838]	5.5" [140]	7.87" [200]
20W	42" [1067]	7.87" [200]	7.87" [200]
32W	42" [1067]	7.87" [200]	7.87" [200]



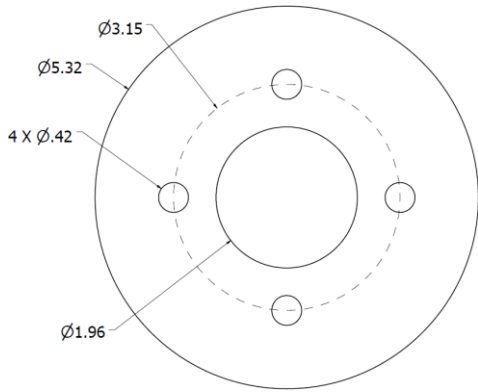
DATE					
PROJECT NAME					
TYPE					
QTY					
ORDERING CODE	AE-OD-RL	-	-	-80	-

B-U-G RATING

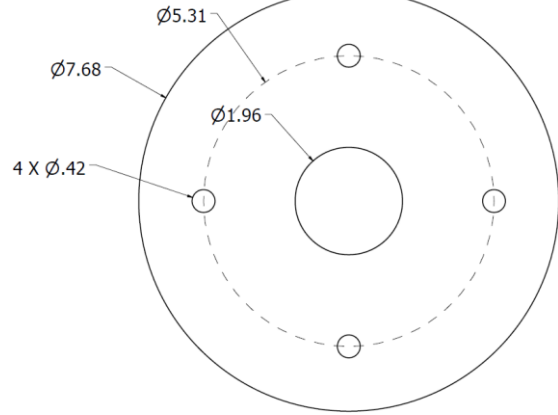
BUG Rating	POWER
10W	B0-U1-G0
20W	B0-U1-G0
32W	B0-U1-G0

ANCHOR BOLT PATTERN

6-inch Base



8-inch Base



ALL DIMENSIONS IN INCHES

eralux®
RAPHAEL

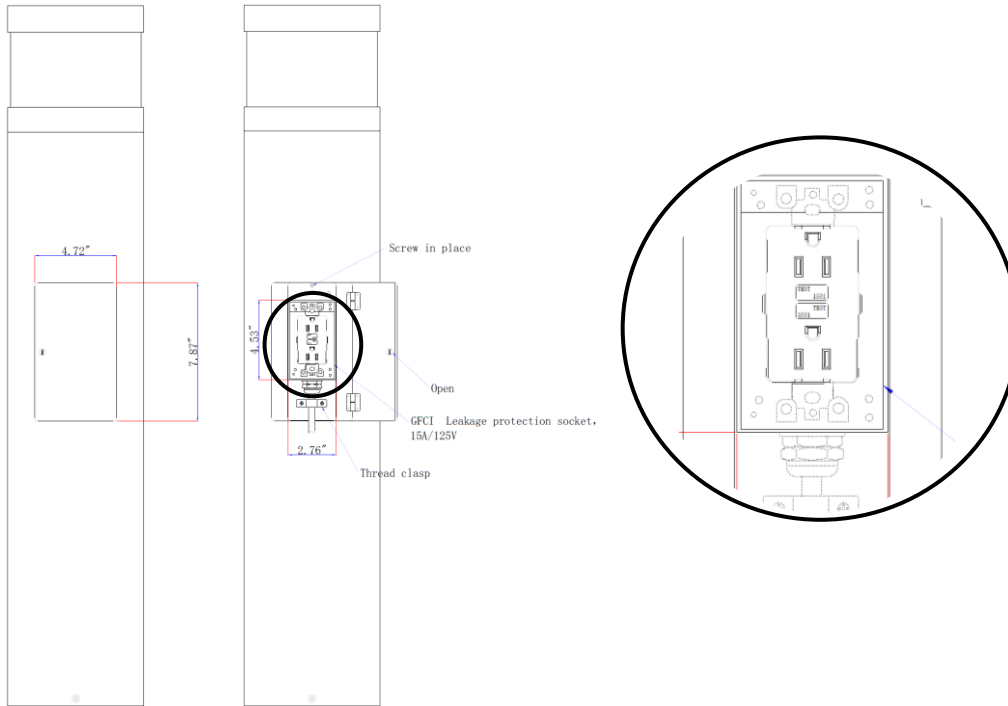
OUTDOOR PRODUCTS
 BOLLARD

DATE						
PROJECT NAME						
TYPE						
QTY						
ORDERING CODE	AE-OD-RL	-	-	-80	-	-

GFCI OUTLET OPTION

Factory installed GFCI outlet option, output voltage 120V with safety flap.

Exterior cover easy locking system sealed from water intrusion.



eralux®
RAPHAEL

OUTDOOR PRODUCTS
BOLLARD

DATE					
PROJECT NAME					
TYPE					
QTY					
ORDERING CODE	AE-OD-RL	-	-	-80	-

LUMEN ESTIMATE

Lumen output varies based on CCT and CRI. An estimate of lumen output of the various CCT/CRI combinations, use correction factors as per table below:

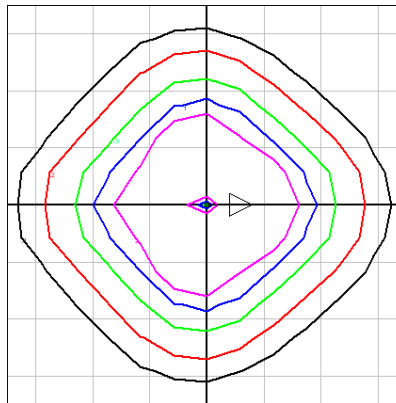
LUMEN ESTIMATE ADJUSTMENT FACTORS

CCT	2700K	3000K	3500K	4000K
NORMAL (80CRI)	.91	.94	.97	1

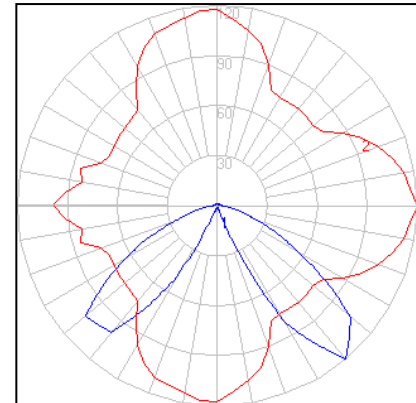
PHOTOMETRIC DATA

AE-OD-RL23-C10-32-6-3-80-X-M

GRID DISTANCES WITH A MOUNTING HEIGHT OF 32" AFG

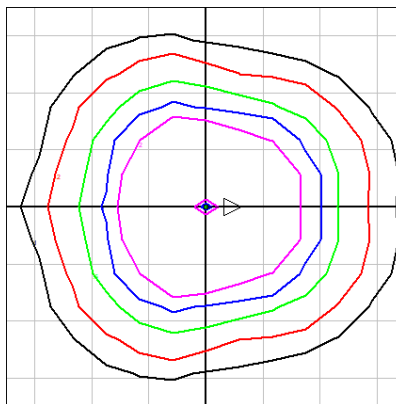


POLAR LUMINOUS INTENSITY GRAPHS

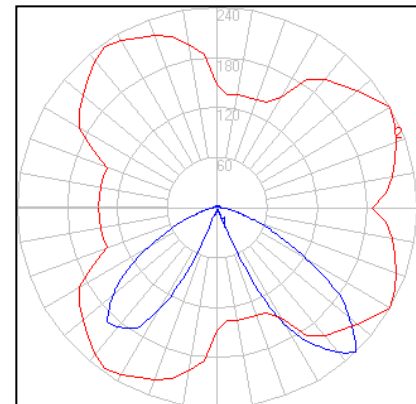


AE-OD-RL24-C20-42-8-3-80-X-M

GRID DISTANCES WITH A MOUNTING HEIGHT OF 42" AFG



POLAR LUMINOUS INTENSITY GRAPHS



eralux®
RAPHAEL

OUTDOOR PRODUCTS
 BOLLARD

DATE					
PROJECT NAME					
TYPE					
QTY					
ORDERING CODE	AE-OD-RL	-	-	-80	-

OVERVIEW



32" height
 6" diameter



42" height
 8" diameter

MULTIPLE SIZES

Available in 6" and 8" diameter bore sizes, with heights of 33" and 44" depending on the lumen package selected.

PREMIUM MATERIALS

Aluminum die-cast housing and plate for enhanced thermal heat dissipation and structural integrity.

CORROSION RESISTANT FINISH

Thermoset powder coat finish combined with anti-cracking marine grade corrosion resistant finish to withstand harsh environmental conditions.

OPTICAL GLASS

Innovative optical system provides illumination to your space while keeping the beam shielded from eyes.

