

SLIMA

LED COMMERCIAL DOWNLIGHT

Recessed Wafer | 4" & 6" Round

The SLIMA Series LED downlight is ideal for both retrofit and new constructions. Its spring-action housing clips make easy installation, selectable CCT switch lets you adjust the color temperature from 2700K to 5000K. Available in 4" & 6" sizes, it comes in white and black finishes, providing a versatile lighting option for any space.

Applications: Office | Retail stores | Hotels | Restaurants | Home interior | Library Etc.



DYNAMIC MENU

Order Information

[Page 2](#)

Dimensions

[Page 3](#)

Accessories

[Page 4](#)

Photometric Data

[Page 6](#)

[Install Instruction link](#)

SPECIFICATIONS

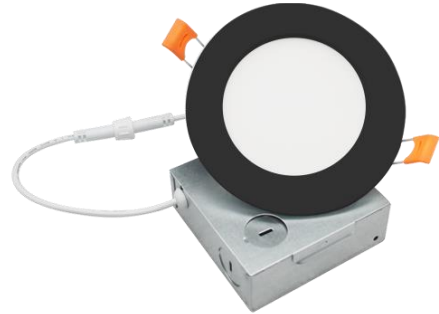
Input Voltage	120V	
Power Factor	>0.9	
Total Harmonic Distortion	<20%	
Dimming Page 6	TRIAC	
CRI	80 CRI	
CCT	<div><div>27K</div><div>30K</div><div>35K</div><div>40K</div><div>50K</div></div>	
Efficacy	~ 75 LPW	
Size	4"	6"
Power	9W	15W
Ambient Temperature Range	-20°C to 40°C	
Mounting Accessories	New construction Retro-fit	
Trim Finish	White Black	

Distribution



eralux®

	DATE	QTY	ACC. QTY	TYPE
PROJECT				
PN				
ACCESSORY PN				
NOTES				



PRODUCT FEATURES



PRODUCT CERTIFICATIONS



SYSTEM WARRANTY – 5 YEARS

Eralux will warrant defective drivers, LEDs and boards for 5 years from the date of purchase. This warranty is valid only if the fixture is installed and used as per installation guides and specifications. If a defect is present, Eralux will send drivers and boards at no fee with a thorough replacement instructions along with instructions on the return of the defective parts back to Eralux.

LUMEN MAINTENANCE – L70 at 50,000 hours

Rated for 70% initial lumen output at 50,000 hours of operation, operated at 25°C ambient temperature; per guidelines published by the Illuminating Engineering Society (IES).



ORDERING GUIDE

AE-DL-SL		
ERLUX Slima Series Recessed Wafer Downlight CCT Switchable 27/30/35/40/50K	04- 4" 9W 650 lm 06- 6" 14W 1150 lm	BK Black WH White
Fixture Family	Size	Finish



ORDERING GUIDE – FRAME KIT

AE-DL-FRKT ERLUX FRAME KITS Round Downlights	[BLANK] Frame kit -PL Chicago plenum	-04 4 Inches -06 6 Inches	-UNV¹
Fixture Family	Option	Size	Type

1. Junction Box is not included. SLIMA SERIES comes with a junction box by default.



ORDERING GUIDE – EMBB

[BLANK] No EMBB BLD-HM8D-YYY 8W emergency battery backup
EMBB

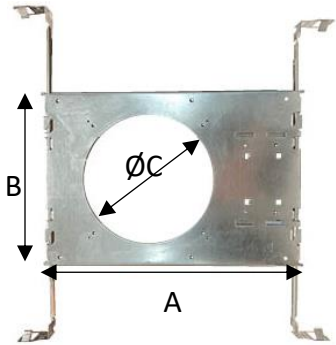
ACCESSORIES

Ordered separately, field installed.

NEW CONSTRUCTION UNIVERSAL FRAME KIT

SPECIFICATIONS	
MATERIAL	22-gauge galvanized steel housing
MOUNTING	T Grid Ceiling
	Gypsum Ceiling
	Maximum Thickness ~1.5"
LENGTH (A)	12.75"
WIDTH (B)	8.63"

OPENING SIZE			
ORDERING CODE	SIZE	SHAPE	C
AE-DL-FRKT-04-UNV	4"	Round	Ø 4.5"
AE-DL-FRKT-06-UNV	6"	Round	Ø 6.37"

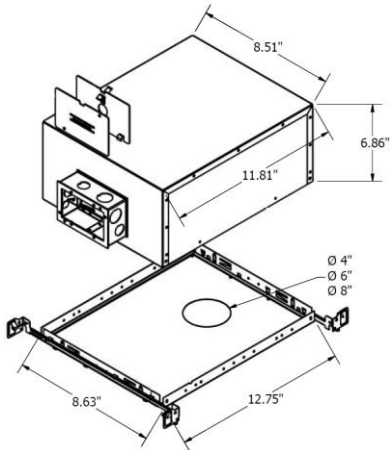


CHICAGO PLENUM

SPECIFICATIONS	
MATERIAL	27-gauge galvanized steel frame Galvanized steel junction box with gasket
MOUNTING	T-bar or drywall ceilings Up to 1.5" thick

OPENING SIZE		
ORDERING CODE	SIZE	SHAPE
AE-DL-FRKT-PL-04	4"	Round
AE-DL-FRKT-PL-06	6"	Round

COMPONENTS
Chicago Plenum External Cover
Chicago Plenum Internal Cover
Chicago Plenum I.C. Box
Chicago Plenum 4-inch Plaster Frame
Chicago Plenum 6-inch Plaster Frame
Chicago Plenum 8-inch Plaster Frame
Chicago Plenum Suspension Bars (2 sets)



CONTROLS

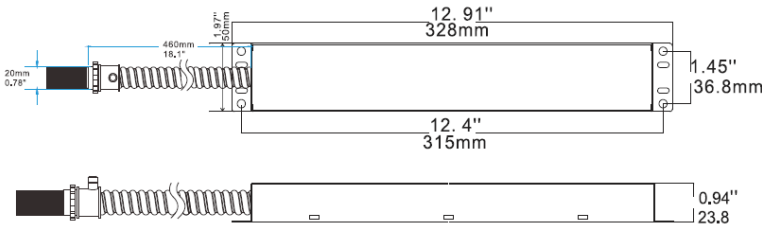
Ordered separately, field installed

EMERGENCY LED DRIVER (BLD-HMXXD-YYY)

BLD-HM8D-YYY



The BLD-HMXXD-YYY series LED Emergency Driver is UL listed for field and factory installations. It switches to emergency mode during power failures, providing up to 90 minutes of lighting. With an integrated battery, charger, and converter, it delivers 6-25W constant power at 170VDC. Ideal for 0-10V dimmable indoor commercial LED fixtures, such as flat panels, troffers, downlights, and linear strip lights.



ROOM OCCUPANCY SENSOR

PART NUMBER	DESCRIPTION
AE-CT-DT806	Line Voltage Motion Sensor
RC102	RC102 Remote Control



SPECIFICATIONS		
Input Voltage	100-347 Vac	
Power Frequency	50/60HZ	
Input Power	8W max	
Output Voltage	170V Dc	
Output Power	8W	
Ambient Temperature	0°C to 50°C	
	30°F to 122°F	
Installation	Remote	

SPECIFICATIONS		
Input Voltage	120-277 Vac	
Power Frequency	50/60HZ	
Rated Load	At 120 Vac	800W
	At 277 Vac	1200W
Detection Range	3-10 Meters	
	9.8-32.8 Feet	
Standby Power	~0.9W	
Time Setting	10 sec to 30 min	
Light Control	10-2,000LUX	
Installation	Ceiling Mounted	

DIMMER COMPATIBILITY LIST

TRIAC Dimming

Brand	Model	Brand	Model
LUTRON	S-600PR-WH	LEVITON	6631-1LW
	CTCL-153PR-WH		6674-POT
	DVWCL-153PH-WH		6672-1LW
	DVCL-153PR-BL		6683-IW
	TG600PR-LA		
	TGCL-153PH-WH		
	CT600P-WH		

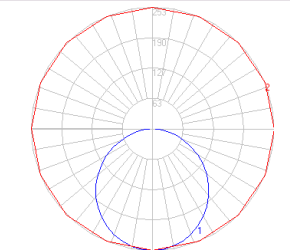
LUMENS ESTIMATE

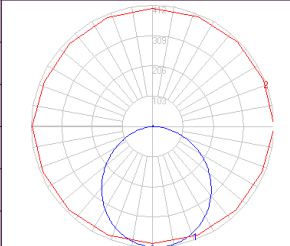
Lumen output varies based on CCT and CRI. An estimate of lumen output of the various CCT/CRI combinations, use correction factors as per table below:

LUMEN ESTIMATE ADJUSTMENT FACTORS

CCT	2700K	3000K	3500K	4000K
NORMAL	0.97	1	1.03	1.05

PHOTOMETRIC DATA

PART NUMBER		ZONAL LUMEN SUMMARY			POLAR LUMINOUS INTENSITY
AE-DL-SL-04-XX		Zone	Lumens	% Fixture	Direct Light
Wattage	9W	0-20°	92.49	12.80	
CCT	3500K	0-30°	196.08	27.00	
Distribution	120°	0-40°	320.49	44.20	
		0-60°	564.42	77.90	
		0-80°	706.39	97.40	
		0-90°	724.93	100.00	

PART NUMBER		ZONAL LUMEN SUMMARY			POLAR LUMINOUS INTENSITY
AE-DL-SL-06-XX		Zone	Lumens	% Fixture	Direct Light
Wattage	14W	0-20	146.82	13.4	
CCT	3500K	0-30	309.74	28.3	
Distribution	120°	0-40	503.06	45.9	
		0-60	872.88	79.6	
		0-80	1071.18	97.7	
		0-90	1084.41	98.9	

OVERVIEW



Innovative Design

- The Slim recessed downlight has a full thickness of just 1" allowing it to be used in a variety of application where fixture size and weight plays a decisive role.



Multiple Options

- 2 sizes 4" and 6"
- 5 CCT switchable from 2700K to 5000K.



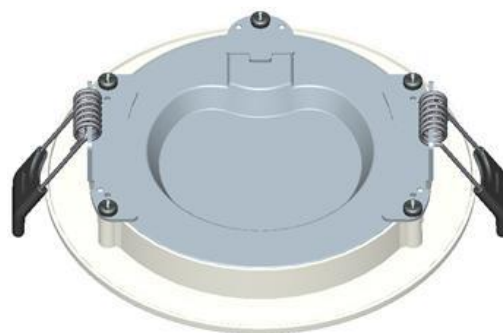
Mountings Available

Durable stainless steel spring action housing clips for retrofit installations or purchase with the new construction frame kit for new constructions.



Accessories

- New construction frame kit.
- Emergency back up battery.



Tests And Certifications

