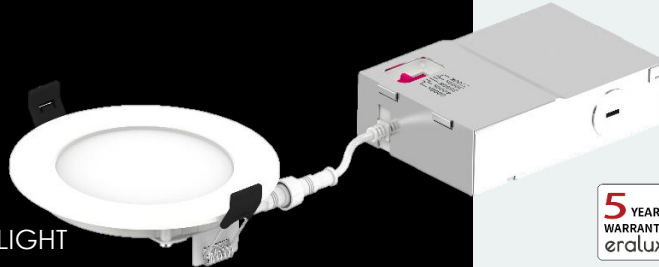


# SLIMA

## LED COMMERCIAL DOWNLIGHT

Recessed Downlight



eralux®



The **SLIMA** Series LED downlight the ideal recessed downlight for any retrofit or new construction project. The spring-action housing clips facilitates the installation process for any power option. The SLIMA downlights has a selectable CCT switch enabling to change the color projection from 2700K to 5000K, offering an unparalleled level of flexibility. Now available in black finish.

DATE

PROJECT NAME

TYPE

QTY

NOTES

### OPERATING & ELECTRICAL

INPUT VOLTAGE	120-277Vac
POWER FACTOR	0.9
DIMMING	TRIAC
TOTAL HARMONIC DISTORTION (THD)	<20%

### PERFORMANCE

LUMENS PER WATT	75 LPW
BEAM ANGLE	Lambertian

### MECHANICAL & HOUSING

HOUSING	Aluminum
LENS	Highly durable polycarbonate and high transmittance lens
FINISH	White or black powder coat finish
POWER SUPPLY	Factory wired electronic LED driver
SPRING	Stainless steel spring-action clips

### APPLICATION CONDITION

AMBIENT TEMPERATURE RANGE	-20°C to 40°C
PROTECTION	Wet location rated, IC rated

### COMPATIBLE MOUNTING

MOUNTING	New construction or retrofit. Mounted with stainless steel spring-action housing clips.
----------	--

### WARRANTY

#### SYSTEM WARRANTY – 5 YEARS

Eralux will warrant defective drivers, LEDs and boards for 5 years from the date of purchase. This warranty is valid only if the fixture is installed and used as per installation guides and specifications. If a defect is present, Eralux will send drivers and boards at no fee with a thorough replacement instructions along with instructions on the return of the defective parts back to Eralux.

#### LUMEN MAINTENANCE – L70 at 50,000 hours

Rated for 70% initial lumen output at 50,000 hours of operation, operated at 25°C ambient temperature; per guidelines published by the Illuminating Engineering Society (IES).

DATE	
PROJECT NAME	
<b>TYPE</b>	
QTY	
NOTES	

## ORDERING GUIDE

### WHITE FINISH:

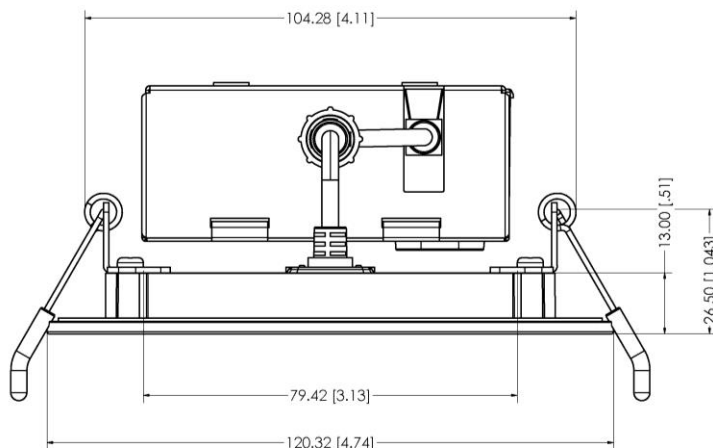
FIXTURE FAMILY	SHAPE & SIZE	POWER	CONTROLS	CCT
<b>AE-DL-SL-</b>	<b>04-</b>	<b>09W-</b>	<b>TRIAC-</b>	<b>P2750</b>
<b>AE-DL-SL</b> ERALUX SLIMA Series recessed downlight	<b>04-</b> 4" Round housing	<b>09W-</b> 9W: 700 lumens	<b>TRIAC-</b> Triac dimming	<b>P2750</b>

### BLACK FINISH:

FIXTURE FAMILY	SHAPE & SIZE	FINISH
<b>AE-DL-SL-</b>	<b>04-</b>	<b>BK</b>
<b>AE-DL-SL</b> ERALUX SLIMA Series recessed downlight 9W: 700 lumens Triac dimming 2700K/3000K/3500K/4000K /5000K CCT switchable	<b>04-</b> 4" Round housing	<b>BK</b> Black Finish

## PRODUCT DIMENSIONS (in mm)

AE-DL-SL-04



DATE	
PROJECT NAME	
<b>TYPE</b>	
QTY	
NOTES	

## ACCESSORIES

Ordered separately, field installed

## NEW CONSTRUCTION FRAME KIT



### MATERIAL

22-gauge galvanized steel housing  
Galvanized steel junction box with multiple knockouts.

### MOUNTING

T-bar or drywall ceilings  
Up to 1.5" thick

### Ordering Code

AE-DL-FRKT-04

## NEW CONSTRUCTION UNIVERSAL FRAME KIT



### MATERIAL

22-gauge galvanized steel housing

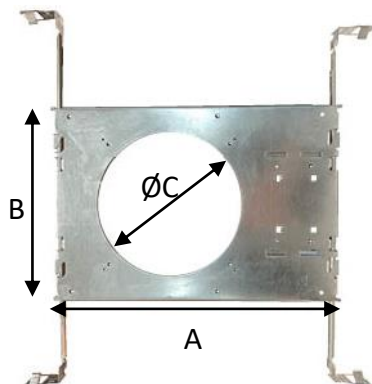
### MOUNTING

T-bar or drywall ceilings  
Up to 1.5" thick

### Ordering Code

AE-DL-FRKT-04-UNV

## FRAME KIT DIMENSIONS



## DIMENSIONS

4" Round	A	12.75" [324 mm]
	B	8.63" [219 mm]
	C	Ø 4.50" [114 mm]
6" Round	A	12.75" [324mm]
	B	8.63" [219 mm]
	C	Ø 6.37" [162 mm]
8" Round	A	12.75" [324mm]
	B	8.63" [219 mm]
	C	Ø 7.25" [184 mm]

DATE	
PROJECT NAME	
<b>TYPE</b>	
QTY	
NOTES	

## ACCESSORIES (Continued)

Ordered separately, field installed

### NEW CONSTRUCTION FRAME KIT

AE-DL-FRKT-04

4" Round

**Housing** Constructed of 22-gauge galvanized steel. For use in direct contact with thermal insulation.

**Junction box** 22-gauge galvanized steel with 2 snap-on covers with knockouts for ½" & ¾" conduits.

**Hanger bars** Pre-nailed style bar hangers that telescope from 15" to 26" suitable for short or long axis of housing.

## EMERGENCY LED DRIVER (BLD-HMXXD-YYY)

BLD-HM8D-YYY

OUTPUT POWER : 8 WATTS

BLD-HM25D-YYY

OUTPUT POWER : 25 WATTS



### Single Flex(Standard)

Easy Wiring

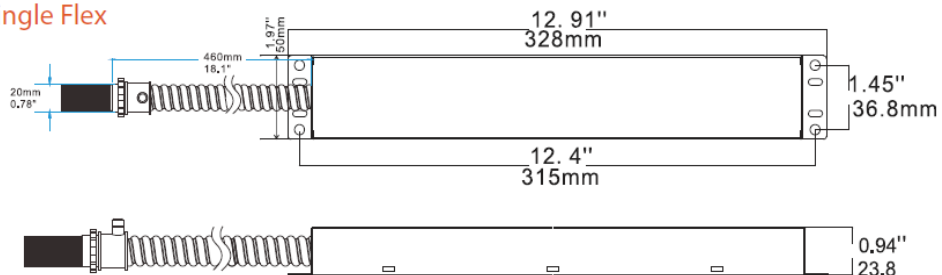
Certified For CA Title 20

Constant Power Performance

BLD-HMXXD-YYY series LED Emergency Driver is UL listed for field and factory installation that allows the same LED fixture to be used for both normal and emergency operation . In the event of a power failure , the emergency driver switches to emergency mode and operates the existing. Fixture to 90 minutes. The unit contains a battery , charge , and converter circuit in a single enclosure .This module will operate an LED array load at 6-25W with constant power at a rated output voltage of 170VDC. The constant power design of BLD-HMXXD-YYY maintains the output wattage to LED array, providing consistent illumination for entire emergency runtime. Ideal for use with most 0-10V dimmable indoor commercial LED lighting fixtures, such as LED flat panel, troffer, downlight and suspension mounting LED linear strip lights, etc.

## DIMENSIONS (inches and mm)

### Single Flex



DATE	
PROJECT NAME	
<b>TYPE</b>	
QTY	
NOTES	

## LUMEN ESTIMATE

Lumen output varies based on CCT and CRI. An estimate of lumen output of the various CCT/CRI combinations, use correction factors as per table below:

LUMEN ESTIMATE ADJUSTMENT FACTORS				
CCT	2700K	3000K	3500K	4000K
NORMAL	0.97	1	1.03	1.05

## PHOTOMETRIC DATA

AE-DL-SL-04 (9W, 3500K)

ZONAL LUMEN SUMMARY			POLAR LUMINOUS INTENSITY GRAPH
ZONE	LUMENS	% OF FIXTURE	
0-20°	92.49	12.80	
0-30°	196.08	27.00	
0-40°	320.49	44.20	
0-60°	564.42	77.90	
0-80°	706.39	97.40	
0-90°	724.93	100.00	

## DIMMER COMPATIBILITY LIST

Dimmer: Low Line (120V/100V) TRIAC
LUTRON -S-600PR-WH
LUTRON-CTCL-153PR-WH
LUTRON-DVWCL-153PH-WH
LUTRON-DVCL-153PR-BL
LUTRON-TG600PR-LA
LUTRON-TGCL-153PH-WH
LUTRON-CT600P-WH
LEVITON-6631-1LW
LEVITON-6674-POT
LEVITON-6672-1LW
LEVITON-6683-IW

DATE	
PROJECT NAME	
<b>TYPE</b>	
QTY	
NOTES	

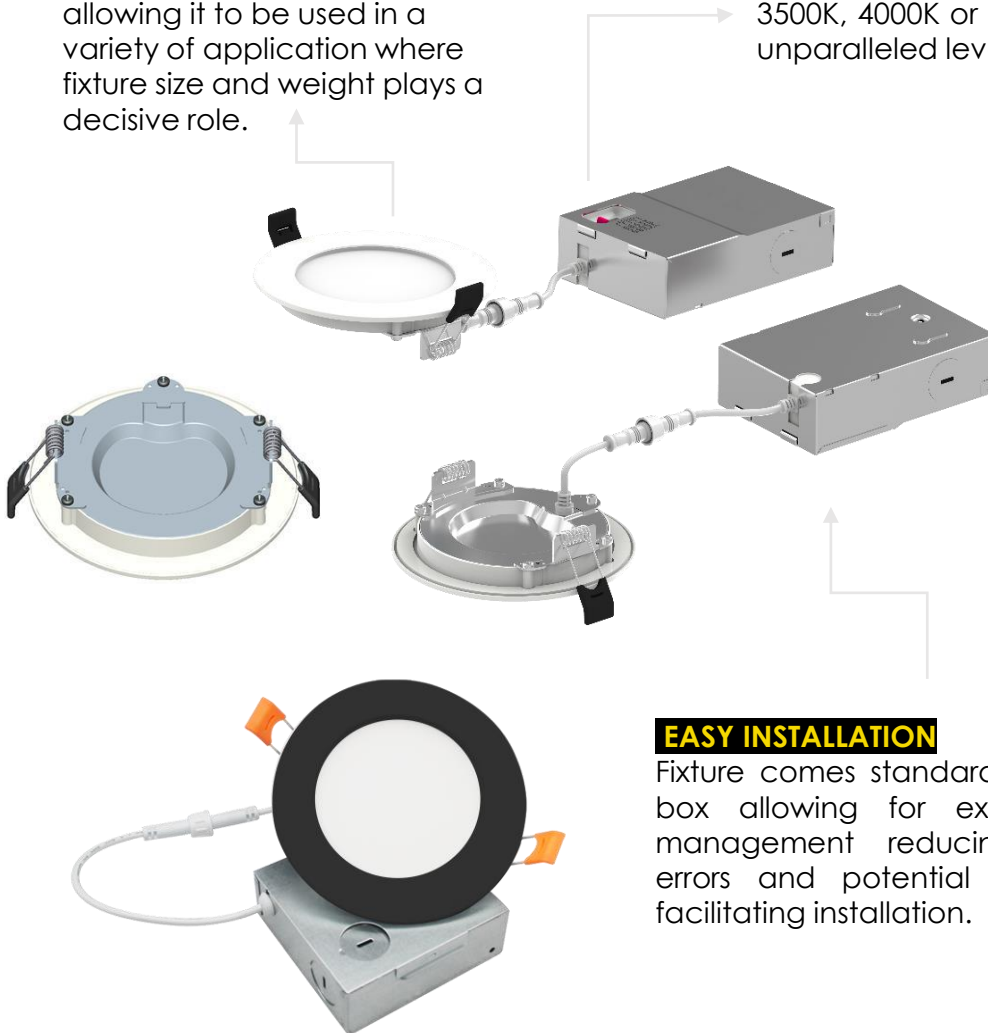
## OVERVIEW

### ULTRA-THIN PROFILE

The Slim recessed downlight has a full thickness of just 1" allowing it to be used in a variety of application where fixture size and weight plays a decisive role.

### SELECTABLE CCT

With a simple switch, the CCT can be changed to 2700K, 3000K, 3500K, 4000K or 5000K, offering an unparalleled level of flexibility.



### EASY INSTALLATION

Fixture comes standard with junction box allowing for excellent cable management reducing installation errors and potential maintenance, facilitating installation.