

SPT



LINEAR LED LIGHT

Wall Mount Architectural Linear | 2.5" Aperture | Direct/Indirect

The SPT is a Linear Architectural LED Light, designed to deliver both direct and indirect lighting for a seamless ambiance. Featuring a selection of diffuser options—including parabolic louver, drop, and wall wash lenses. Our linear supports continuous runs, creating a unified lighting design that enhances the aesthetic of any environment.

Applications: Art Galleries | Office | Retail Stores | Hospitality | Education

	DATE	QTY	ACC. QTY	TYPE
PROJECT				
PN				
ACCESSORY PN				
NOTES				

DYNAMIC MENU

Order Information	Page 2
Dimensions	Page 4
Accessories	Page 5
Photometric Data	Page 8

[Install Instruction link](#)

SPECIFICATIONS

Input Voltage	120-277/347V	
Power Factor	>0.9	
Total Harmonic Distortion	<20%	
Dimming Page 3	0-10V dimming	
CRI	80 CRI	
CCT	30K 35K 40K 50K	
Efficacy	~105 lm/W	~1312 lm/ft
Length	4'	8'
Power	50W	100W
Ambient Temperature Range	-10°C to 40°C	
Mounting Options	<input checked="" type="checkbox"/> Wall Mount	
Fixture Finish	Black White Silver Gun powder 	
Custom Design	Continuous runs L shape (inner/outer corner)	
Optics	Polycarbonate Drop lens Wall Wash Parabolic louver	
Distribution		



PRODUCT FEATURES



PRODUCT CERTIFICATIONS



Design Lights Consortium® (DLC) qualified product. Not all versions of this product may be DLC qualified. Please check the DLC Qualified Products List at www.designlights.org/QPL to confirm which versions are qualified" [page 3](#)

SYSTEM WARRANTY – 5 YEARS

Eralux will warrant defective drivers, LEDs and boards for 5 years from the date of purchase. This warranty is valid only if the fixture is installed and used as per installation guides and specifications. If a defect is present, Eralux will send drivers and boards at no fee with a thorough replacement instructions along with instructions on the return of the defective parts back to Eralux.

LUMEN MAINTENANCE – L85 at 50,000 hours

Rated for 85% initial lumen output at 50,000 hours of operation, operated at 25°C ambient temperature; per guidelines published by the Illuminating Engineering Society (IES).

LINEAR LED LIGHT

Wall Mount Architectural Linear | 2.5" Aperture | Direct/Indirect



ORDERING GUIDE

AE-SF-SPTCA			010	
AE-SF-SPTCA ERALUX SPT Linear Architectural Fixture 120-277/347V Input Voltage	4 50 4ft 30/40/50W Up to 5250 lm 8 100 8ft 60/80/100W Up to 10500 lm C Continuous length increment of 2ft ¹ (Select or type the length then click on 'C')	30/35/40² 3000/3500/4000K selectable 30/40/50 3000/4000/5000K selectable	010 0-10V Dimming	WH White BK Black SV³ Silver GN³ Gun Powder

Fixture Family	Length Power	CCT	Control	Finish
----------------	----------------	-----	---------	--------

WM				
WM Wall Mount	[BLANK] No Option -LDE1⁴ Fade-to-Black Down to 1% -EMBB⁵ Emergency Battery Backup -1DIM⁶ 1% Dimming	[BLANK] Standard Polycarbonate -P Prime Parabolic silver -PS Prime Shadow Parabolic Black -DL 0.5" Drop -WW Wall Wash	[BLANK] 70% Direct, 30% Indirect -100U⁷ 100% Indirect	

Mounting	Option	Diffuser	Distribution
----------	--------	----------	--------------

NOTES

- For increments of 1ft, contact factory.
- Default CCT setting is 3500K, but can be changed upon request before shipping.
- Only available with polycarbonate diffusers
- LDE1 is a Lutron Hi-lume EcoSystem driver with Soft-on. It requires color selection, if not the default 3500K CCT.
- EMBB option available for 120-277V only.
- 1DIM option available for 120-277V only.
- 100% up-light only available in black and white and is not available for custom design shapes.
- L-shape are available, contact factory for more information.

CAUTION

- If there are multiple fixtures connected to the same 0-10V dimming line, a 0-10V controller must be considered to enable consistent dimming across the fixtures. Failure to do so will lead to inconsistent dimming and behaviors in the fixtures. Single switch is not recommended for controlling multiple fixtures simultaneously.
- Maximum of 300W per electrical drop.

LINEAR LED LIGHT

Wall Mount Architectural Linear | 2.5" Aperture | Direct/Indirect

ORDERING GUIDE – TRIAC DIMMING

AE-SF-SPTCA			-TRI	
ERALUX SPT Linear Architectural Fixture	4 40 4ft 40W 5250lm 8 80 6ft 50W 10500lm	30 3000K 35 3500K 40 4000K	-TRI TRIAC Dimming	WH-GB White BK-GB Black
Fixture Family	Length Power	CCT	Controls	Finish

LUMEN OUTPUT

LENGTH	EFFICACY	OUTPUT POWER	DIRECT OUTPUT	INDIRECT OUTPUT	
4FT	Avg ~125 LPW ~1550 lm/ft	30/40/50 watts switchable	30W 3750 lm	21W 2625 lm	9W 1125 lm
			40W 5000 lm	28W 3500 lm	12W 1500 lm
			50W 6250 lm	35W 4375 lm	15W 1875 lm
8FT		70/85/100 watts switchable	60W 7500 lm	42W 5250 lm	18W 2250 lm
			80W 10000 lm	56W 7000 lm	24W 3000 lm
			100W 12500 lm	70W 8750 lm	30W 3750 lm

DLC MODEL



SPT			
DLC MODEL	PRODUCT ID	Primary Use	Classification
AE-SF-SPTCA45030-35-40010YY-GB	S-OTKXJP	Linear Ambient Luminaires with Indirect component	Standard
AE-SF-SPTCA810030-35-40010YY-GB	S-IZ25K3		Standard

DIMMER COMPATIBILITY LIST

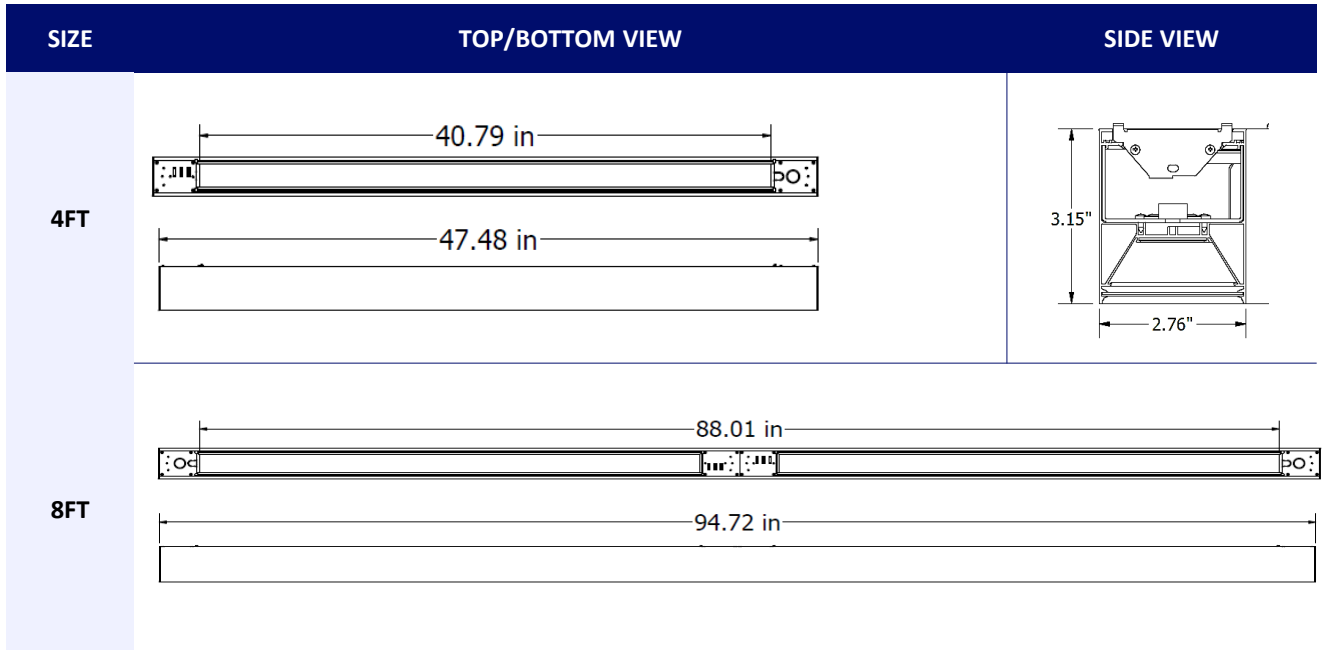
0-10V Dimming

BRAND	MODEL	BRAND	MODEL
LEVITON	IP710-LFZ	LEGRAND	RH4FBL3PTC
	DS710	EATON	WBSD-010SLD
LUTRON	DVS7V-WH	HUBBLE	LHDIRS3N
	MS-Z101		

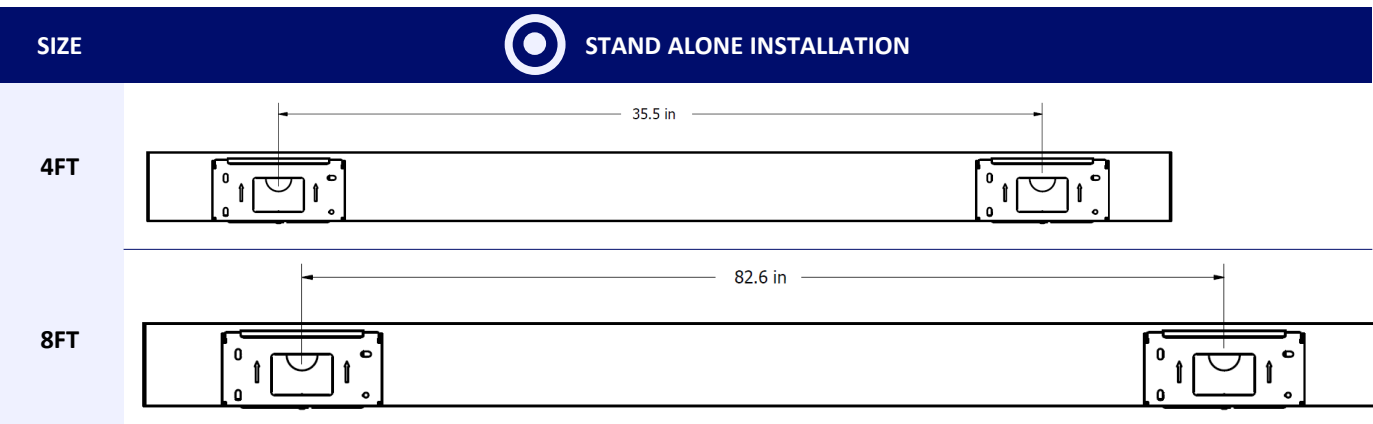
LINEAR LED LIGHT

Wall Mount Architectural Linear | 2.5" Aperture | Direct/Indirect

DIMENSIONS



DRILLING PATTERN



LINEAR LED LIGHT

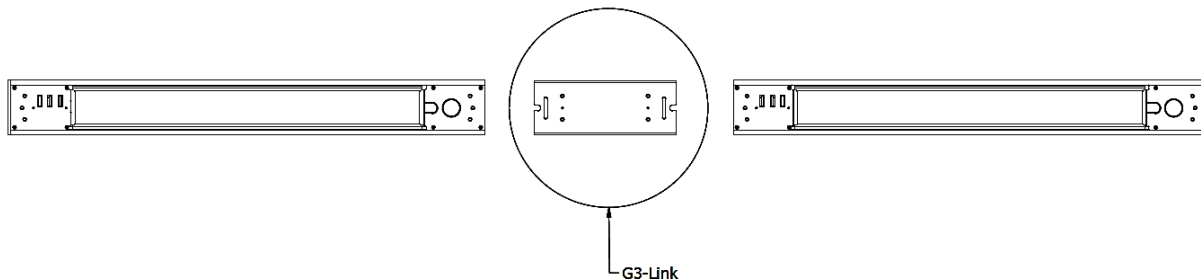
Wall Mount Architectural Linear | 2.5" Aperture | Direct/Indirect

ACCESSORIES

Ordered separately, if needed

POWER CORD		
ORDER CODE	DESCRIPTION	PICTURE
AE-SF-PWRCORD-WH AE-SF-PWRCORD-BK	8' white / black power cord with 120-277V input voltage	
AE-SF-PWRCORD-WH-18FT AE-SF-PWRCORD-BK-18FT	18' white / black power cord with 120-277V input voltage	
AE-SF-PWRCORD-HV-WH AE-SF-PWRCORD-HV-BK	8' white / black power cord with 120-347V input voltage	
AE-SF-PWRCORD-WH-18FT AE-SF-PWRCORD-BK-18FT	18' white / black power cord with 120-277V input voltage	

For Continuous Run



G3-LINK	
ORDER CODE	DESCRIPTION
AE-SF-G3-LINK	Seamless mechanical connection for continuous runs Preventing Light Leakage Easy installation

MOUNTING

WALL MOUNT BRACKET		
ORDER CODE	Description	Pictures
AE-SF-WMB-WH	White wall mount kit used for linear fixtures installation on walls	
AE-SF-WMB-BK	Black wall mount kit used for linear fixtures installation on walls	

LINEAR LED LIGHT

Wall Mount Architectural Linear | 2.5" Aperture | Direct/Indirect

DIFFUSER OPTIONS

DROP LENS

Code	Description	Picture
AE-SF-G5/SPT-Drop Lens-0.5 inch-XFT-WH AE-SF-G5/SPT-Drop Lens-0.5 inch-XFT-BK (X = 4 or 8)	Highly durable frosted polycarbonate lens provides a side glowing with crisp corners visible at distance. This drop lens gives a 3D look to the light that will enliven your space and add wider spread to the surroundings. 23% reduction in lumen output	

WALL WASH LENS

Code	Description	Picture
AE-SF-G5/SPT-XFT-WW-KIT-WH AE-SF-G5/SPT-XFT-WW-KIT-BK (X = 4 or 8)	The wall washing is a feature where the luminaire is typically positioned at least 12" from the wall to enhance the smoothness of a wall by eliminating shadows or to highlight a wall to create visual interest.	

PRIME LENS

Description	Picture
<p>The Prime Lens features a parabolic silver louver that offers outstanding light shielding and an attractive, crisp visual texture. Its parabolic blade design, along with side reflectors, effectively direct light, enhancing brightness and efficiency in lighting applications. The Prime Lens delivers a modern, sleek look, making them suitable for contemporary spaces.</p> <p>Efficacy ~90LPW & UGR <15</p>	

PRIME SHADOW LENS

Description	Picture
<p>The Prime Shadow Lens features a parabolic black louver that offers outstanding light shielding and an attractive, crisp visual texture. Its black parabolic blade design, along with side reflectors, effectively reduce glare by absorbing more light. Black louvers can create a more dramatic or industrial aesthetic, fitting well in specific design contexts.</p> <p>Efficacy ~55 LPW & UGR <15</p>	

LINEAR LED LIGHT

Wall Mount Architectural Linear | 2.5" Aperture | Direct/Indirect

CONTROLS

EMERGENCY LED DRIVER (BLD-YTXXD-XXX)

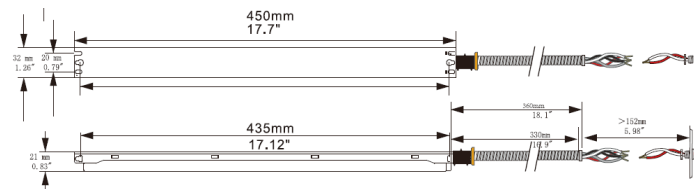
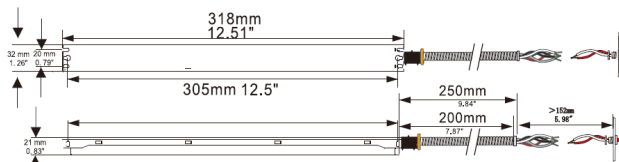
BLD-YT08D-XXX

BLD-YT15D-XXX



SPECIFICATIONS	
Input Voltage	30-60VDC
Power Frequency	50/60HZ
Output Voltage	30-60VDC
Output Power	8W 15W
Ambient Temperature	0°C to 50°C
	30°F to 122°F
Installation	Integrated

The BLD-YTXXD-XXX series LED Emergency Driver is UL listed for field and factory installations. It switches to emergency mode during power failures, providing up to 90 minutes of lighting. With an integrated battery, charger, and converter, it delivers 8 or 15W constant power at 30-60VDC. Its slim shape is ideal for use in linear LED lighting fixtures.

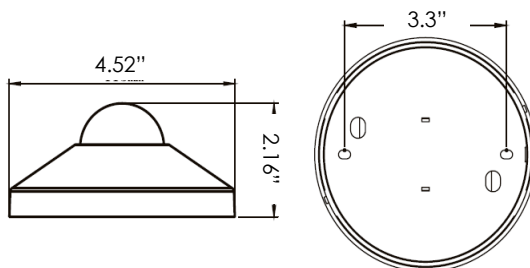


ROOM OCCUPANCY SENSOR

Ordered separately, field installed

PART NUMBER	DESCRIPTION
AE-CT-DT806	Detecta - Room Occupancy Sensor
RC102	RC102 Remote Control

SPECIFICATIONS	
Input Voltage	120-277 Vac
Power Frequency	50/60HZ
Rated Load	At 120 Vac 800W
	At 277 Vac 1200W
Detection Range	3-10 Meters
	9.8- 32.8 Feet
Standby Power	~0.9W
Time Setting	10 sec to 30 min
Light Control	10-2,000LUX
Installation	Ceiling Mounted



LINEAR LED LIGHT

Wall Mount Architectural Linear | 2.5" Aperture | Direct/Indirect

LUMEN ESTIMATE

Lumen output varies based on CCT and CRI. Use correction factors as per table below:

LUMEN ESTIMATE ADJUSTMENT FACTORS				
CCT	3000K	3500K	4000K	5000K
PREMIUM (90CRI)	0.94	0.97	1	1.03

PHOTOMETRIC DATA

PART NUMBER		ZONAL LUMEN SUMMARY			POLAR LUMINOUS INTENSITY	CONE DISTRIBUTION			
AE-SF-SPTCA45030/35/40010		Zone	Lumens	% Fixture	Direct / Indirect Light	Center Beam Fc		Beam Width	
Wattage	50W	0-20°	595.68	9.3		1.7ft	569 fc	4.8 ft	4.6 ft
CCT	4000K	0-30°	1254	19.5		3.3ft	151 fc	9.3 ft	8.9 ft
Distribution	120°	0-40°	2030.56	31.6		5.0ft	65.8 fc	14.2 ft	13.5 ft
Length	4ft	0-60°	3528.07	54.9		6.7ft	36.6 fc	19.0 ft	18.0 ft
		0-80°	4370.63	68		8.3ft	23.9 fc	23.5 ft	22.3 ft
		0-90°	4472.68	69.6	10.0ft	16.4 fc	28.3 ft	26.9 ft	
						■ Vert. Spread: 109.5° ■ Horiz. Spread: 106.7°			
PART NUMBER		ZONAL LUMEN SUMMARY			POLAR LUMINOUS INTENSITY	CONE DISTRIBUTION			
AE-SF-SPTCA810030/35/40010		Zone	Lumens	% Fixture	Direct / Indirect Light	Center Beam Fc		Beam Width	
Wattage	100W	0-20°	1191.37	9.3		1.7ft	1138 fc	4.8 ft	4.6 ft
CCT	4000K	0-30°	2507.99	19.5		3.3ft	302 fc	9.3 ft	8.9 ft
Distribution	120°	0-40°	4061.11	31.6		5.0ft	132 fc	14.2 ft	13.5 ft
Length	8ft	0-60°	7056.14	54.9		6.7ft	73.2 fc	19.0 ft	18.0 ft
		0-80°	8741.27	68		8.3ft	47.7 fc	23.5 ft	22.3 ft
		0-90°	8945.36	69.6	10.0ft	32.9 fc	28.3 ft	26.9 ft	
						■ Vert. Spread: 109.5° ■ Horiz. Spread: 106.7°			

LINEAR LED LIGHT

Wall Mount Architectural Linear | 2.5" Aperture | Direct/Indirect

PHOTOMETRIC DATA - DIFFUSER

PART NUMBER		ZONAL LUMEN SUMMARY			POLAR LUMINOUS INTENSITY	CONE DISTRIBUTION			
AE-SF-SPTCA45030/35/40X-DL		Zone	Lumens	% Fixture	Direct / Indirect Light	Center Beam Fc		Beam Width	
Wattage	50W	0-20°	420.45	11.9		2.5ft	186 fc	6.5 ft	7.2 ft
CCT	4000K	0-30°	882.52	24.9		5.0ft	46.6 fc	12.9 ft	14.5 ft
Distribution	120°	0-40°	1428.38	40.4		7.5ft	20.7 fc	19.4 ft	21.7 ft
Length	4ft	0-60°	2493.86	70.5		10.0ft	11.6 fc	25.8 ft	28.9 ft
DROP LENS		0-80°	3150.06	89		12.5ft	7.45 fc	32.3 ft	36.2 ft
		0-90°	3267.17	92.3	15.0ft	5.17 fc	38.7 ft	43.4 ft	
						■ Vert. Spread: 104.5° ■ Horiz. Spread: 110.7°			
PART NUMBER		ZONAL LUMEN SUMMARY			POLAR LUMINOUS INTENSITY	CONE DISTRIBUTION			
AE-SF-SPTCA45030/35/40X-WW		Zone	Lumens	% Fixture	Direct / Indirect Light	Center Beam Fc		Beam Width	
Wattage	50W	0-20°	931.99	13.4		2.5ft	347 fc	3.5 ft	1.4 ft
CCT	4000K	0-30°	2174.46	31.3		5.0ft	86.8 fc	6.9 ft	2.8 ft
Distribution	120°	0-40°	3457.33	49.8		7.5ft	38.6 fc	10.4 ft	4.1 ft
Length	4ft	0-60°	4537.37	65.3		10.0ft	21.7 fc	13.9 ft	5.5 ft
WALL WASH LENS		0-80°	4827.69	69.5		12.5ft	13.9 fc	17.3 ft	6.9 ft
		0-90°	4850.9	69.8	15.0ft	9.65 fc	20.8 ft	8.3 ft	
						■ Vert. Spread: 69.5° ■ Horiz. Spread: 30.9°			
PART NUMBER		ZONAL LUMEN SUMMARY			POLAR LUMINOUS INTENSITY	CONE DISTRIBUTION			
AE-SF-SPTCA45030/35/40X-P		Zone	Lumens	% Fixture	Direct / Indirect Light	Center Beam Fc		Beam Width	
Wattage	50W	0-20°	967.59	27.6		2.5ft	178 fc	7.2 ft	6.9 ft
CCT	4000K	0-30°	1905.45	54.4		5.0ft	44.5 fc	14.4 ft	13.8 ft
Distribution	120°	0-40°	2736.19	78.2		7.5ft	19.8 fc	21.7 ft	20.7 ft
Length	4ft	0-60°	3454.72	98.7		10.0ft	11.1 fc	28.9 ft	27.6 ft
PRIME		0-80°	3483.38	99.5		12.5ft	7.11 fc	36.1 ft	34.5 ft
		0-90°	3485.56	99.6	15.0ft	4.94 fc	43.3 ft	41.5 ft	
						■ Vert. Spread: 110.6° ■ Horiz. Spread: 108.2°			
PART NUMBER		ZONAL LUMEN SUMMARY			POLAR LUMINOUS INTENSITY	CONE DISTRIBUTION			
AE-SF-SPTCA45030/35/40X-PS		Zone	Lumens	% Fixture	Direct / Indirect Light	Center Beam Fc		Beam Width	
Wattage	50W	0-20	523.96	23.4		2.5ft	233 fc	3.1 ft	5.1 ft
CCT	4000K	0-30	1069.19	47.8		5.0ft	58.4 fc	6.3 ft	10.3 ft
Distribution	120°	0-40	1601.34	71.6		7.5ft	25.9 fc	9.4 ft	15.4 ft
Length	4ft	0-60	2178.89	97.4		10.0ft	14.6 fc	12.5 ft	20.5 ft
PRIME SHADOW		0-80	2230.17	99.7		12.5ft	9.34 fc	15.6 ft	25.6 ft
		0-90	2231.01	99.8	15.0ft	6.49 fc	18.8 ft	30.8 ft	
						■ Vert. Spread: 64.0° ■ Horiz. Spread: 91.5°			

LINEAR LED LIGHT

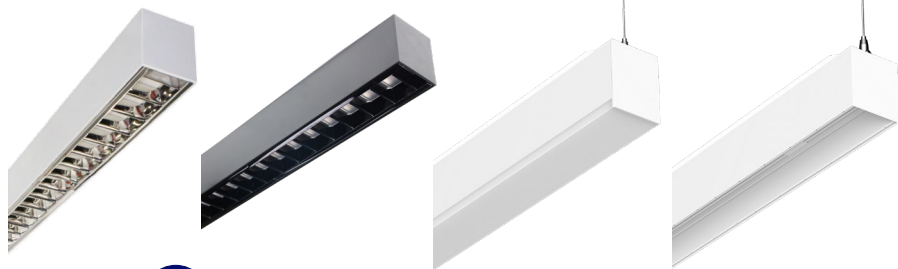
Wall Mount Architectural Linear | 2.5" Aperture | Direct/Indirect

OVERVIEW



Innovative Design

- Extruded aluminum housing for better heat dissipation.
- Highly durable polycarbonate and high transmittance lens.



Diffusers

- Polycarbonate lens
- Wall-wash lens
- 0.5-inch drop lens
- Black/silver parabolic louver



Distribution

- 70% direct & 30% indirect light.
- 120° beam angle.



Multiple Options

- Two standard length available: 4ft & 8ft.
- Three CCT switchable and power tunable.
- Black, white, silver, & gun powder finishes.



Emergency Backup Battery



Mountings Available

- Suspended (refer to the suspended spec sheet)
- Wall mount



Features

- 1% dimming option
- Lutron Hi-lume Ecosystem driver with Soft-on



Tests And Certifications

