

# TRINITY

## INDUSTRIAL LED LIGHT

### Linear High Bay | 75W - 400W

The Trinity Series is offered in several sizes and has several mounting methods to suit your project space. One of the distinctive feature of this fixture is the use of aluminum extrusions to offer the maximum surface area for the heatsinking of the led arrays. This ensures longer lifetime of the fixture while enabling a higher performance.

Application: Industrial, Manufacturing, Warehouse, High-bay Applications.

eralux®

	DATE	QTY	ACC. QTY	TYPE
PROJECT				
PN				
ACCESSORY PN				
NOTES				



### DYNAMIC MENU

Order Information	<a href="#">Page 2</a>
Dimensions	<a href="#">Page 3</a>
Accessories	<a href="#">Page 4</a>
Photometric Data	<a href="#">Page 6</a>

[Install Instruction link](#)



### SPECIFICATIONS

Input Voltage	120-277V   347-480V
Power Factor	>0.9
Total Harmonic Distortion	<20%
Dimming	0-10V Dimming
CRI	80 CRI
CCT	<div style="display: flex; gap: 10px;"> <div style="border: 1px solid gray; border-radius: 50%; padding: 2px 5px;">40K</div> <div style="border: 1px solid gray; border-radius: 50%; padding: 2px 5px;">50K</div> </div>
Lumens Per Watt	~140-150 LPW
Power	75   100   150   200   240   300   400W
Ambient Temperature Range	-40 °C to 50°C
Distribution	90°   120°   50x90°
Mounting Options	Suspended

### PRODUCT FEATURES



### PRODUCT CERTIFICATIONS



### SYSTEM WARRANTY – 5 YEARS

Eralux will warrant defective drivers, LEDs and boards for 5 years from the date of purchase. This warranty is valid only if the fixture is installed and used as per installation guides and specifications. If a defect is present, Eralux will send drivers and boards at no fee with a thorough replacement instructions along with instructions on the return of the defective parts back to Eralux.

### LUMEN MAINTENANCE – L70 at 50,000 hours

Rated for 70% initial lumen output at 50,000 hours of operation, operated at 25°C ambient temperature; per guidelines published by the Illuminating Engineering Society (IES).



## ORDERING GUIDE

AE-IL-TR							-SS
<b>AE-IL-TR</b> ERALUX TRINITY Industrial Fixture Linear High Bay	<b>-75W</b> 11,250 lm	<b>-40</b> 4000K	<b>-UV</b> 120-277 Vac	<b>-220</b> Compatible with 75W	<b>-90</b> 90° Beam Angle	<b>-0-10V</b> 0-10V Dimming	<b>-SS</b>
	<b>-100W</b> 15,000 lm	<b>-50</b> 5000K	<b>-HV</b> 347-480 Vac	<b>-280</b> Compatible with 100W	<b>-120</b> 120° Beam Angle	<b>-MS</b> Microwave Motion Sensor	
	<b>-150W</b> 22,500 lm			<b>-440</b> Compatible with 150W	<b>-5090</b> 50°x90° Beam Angle	<b>-EM</b> Emergency Battery	
	<b>-200W</b> 30,000 lm			<b>-560</b> Compatible with 200W		<b>-MS-PIR</b> PIR Motion Sensor	
	<b>-240W</b> 36,000 lm			<b>-680</b> Compatible with 240W			
	<b>-300W</b> 45,000 lm			<b>-880</b> Compatible with 300W			
	<b>-400W</b> 60,000 lm			<b>-1120</b> Compatible with 400W			

Fixture Family

Power

CCT

Voltage

LED Code

Beam Angle

Controls

Driver



## ACCESSORY ORDERING GUIDE



**[BLANK]**

No EMBB

**BLD-UM60D-YYY**

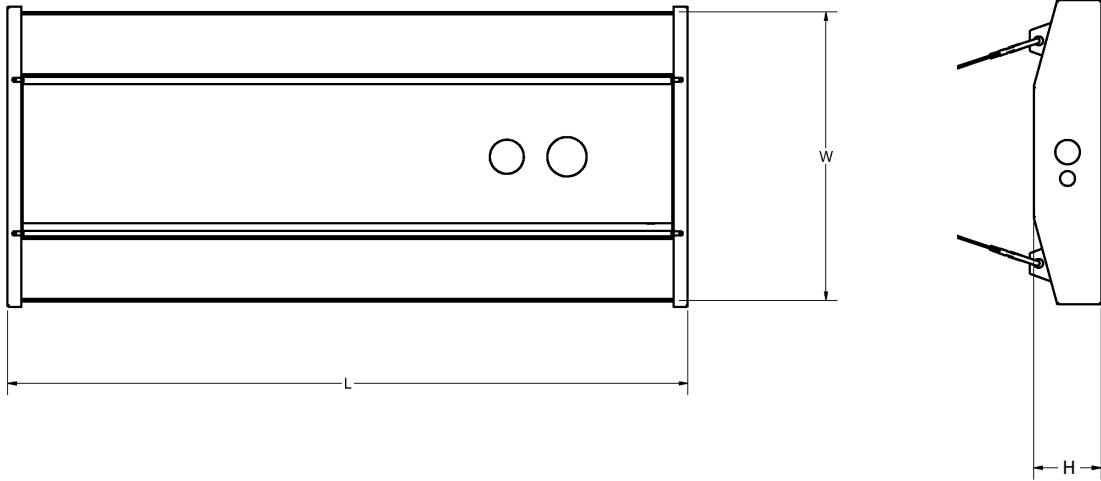
60W Emergency  
Battery Backup

**EMBB**

1. The EMBB does not come with remote, the remote is ordered separately if required

## DIMENSIONS

### FIXTURE



POWER	LENGTH	WIDTH	HEIGHT
75	22.7"	10"	2.32"
100	22.7"	10"	2.32"
150	22.7"	10"	2.32"
200	43.1"	10"	2.32"
240	43.1"	10"	2.32"
300	43.1"	10"	2.32"
400	43.1"	14.72"	2.32"

## CONTROLS

### EMERGENCY LED DRIVER

Ordered separately, field installed

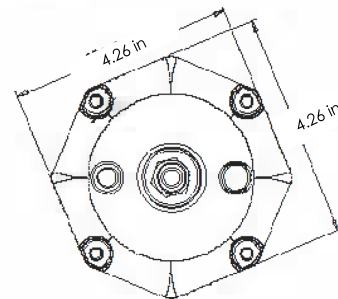
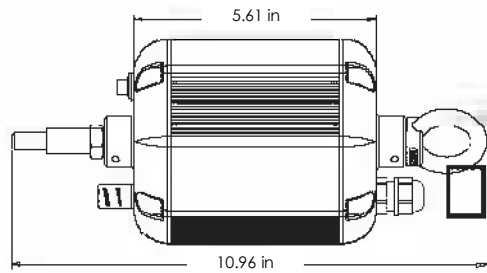
BLD-UM60D-YYY (remote is optional) / BLD-REMOTECONTROL

To test the EMBB; press the button that is located on the EMBB or order the remote separately to test it remotely

The BLD-UMXXX-YYY series LED Emergency Driver is UL listed for field and facto installation, allowing a single LED fixture to operate in both normal and emergen modes. In case of power failure, it powers the fixture for up to 90 minutes, integrating battery, charger, and converter in one unit. Supporting LED loads of 30-60W at 170VD its constant power design ensures consistent illumination during emergencies, making ideal for 0-10V dimmable indoor industrial LED fixtures, such as flat panels, troffers, ar UFO lights.





SPECIFICATIONS	
Input Voltage	100-347 Vac
Power Frequency	50/60HZ
Input Power	15W MAX
Output Voltage	170V Dc
Output Power	60W
Ambient Temperature	5°C to 50°C
	41°F to 122°F
Installation	Remote



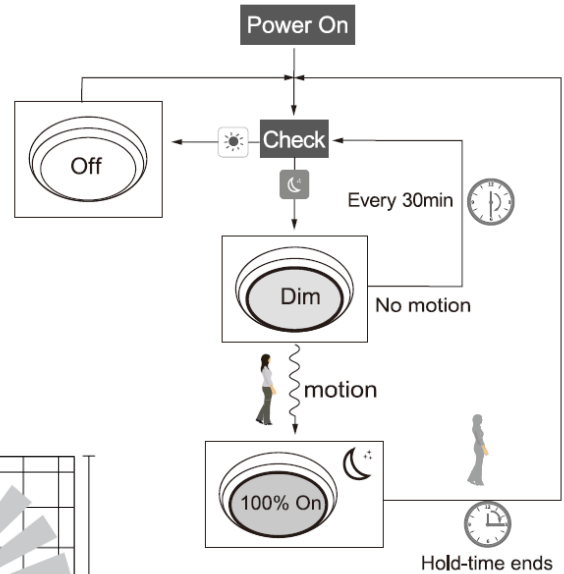
## CONTROLS

### MOTION SENSOR

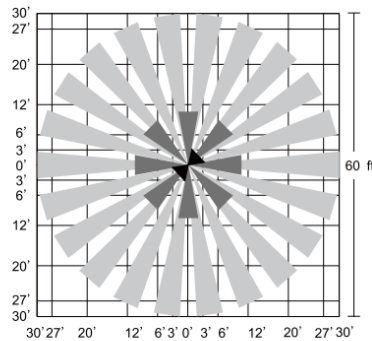
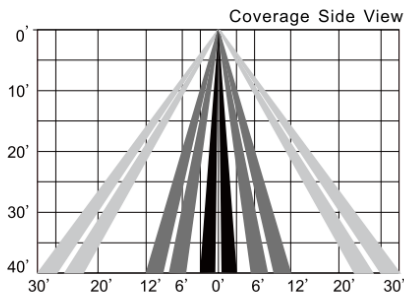
DESCRIPTION	PICTURE
Plug in low-voltage PIR Motion Sensor IP65	
Remote control for the motion sensor	

### Factory mode

Factory Default Setting	
<b>Sensitivity</b>	100%
<b>Hold on time</b>	5 min
<b>Daylight Sensor</b>	ON
<b>Dimming level</b>	30%
<b>Dimming time</b>	60 min



### Area Coverage



## PHOTOMETRIC DATA

PART NUMBER		ZONAL LUMEN SUMMARY			POLAR LUMINOUS INTENSITY
AE-IL-TR75W-40-UV-220-120-XX-SS		Zone	Lumens	% Fixture	Direct Light
Wattage	75W	0-20°	1409.92	13.2	
CCT	4000K	0-30°	3013.44	28.3	
Distribution	120°	0-40°	4922.43	46.3	
		0-60°	8561.46	80.4	
		0-80°	10473.57	98.4	
		0-90°	10642.18	100.0	

PART NUMBER		ZONAL LUMEN SUMMARY			POLAR LUMINOUS INTENSITY
AE-IL-TR150W-40-UV-220-120-XX-SS		Zone	Lumens	% Fixture	Direct Light
Wattage	150W	0-20°	2903.49	12.8	
CCT	4000K	0-30°	6207.15	27.4	
Distribution	90°	0-40°	10176.61	44.9	
		0-60°	17953.69	79.3	
		0-80°	22304.32	98.5	
		0-90°	22650.12	100.0	

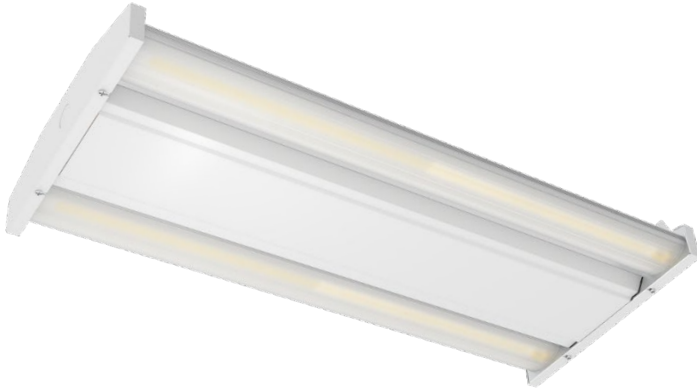
PART NUMBER		ZONAL LUMEN SUMMARY			POLAR LUMINOUS INTENSITY
AE-IL-TR200W-40-UV-220-120-XX-SS		Zone	Lumens	% Fixture	Direct Light
Wattage	200W	0-20°	3794.10	12.8	
CCT	4000K	0-30°	8128.36	27.4	
Distribution	90°	0-40°	13360.72	45.0	
		0-60°	23754.82	80.1	
		0-80°	29398.30	99.1	
		0-90°	29670.91	100.0	

## OVERVIEW



### Innovative Design

- Aluminum die-cast and heat sink to ensure superior thermal heat dissipation.



### Mountings Available

- Suspended (Chains)



### ACCESSORIES

- EMBB
- Motion Sensor



Emergency backup battery



Motion Sensor



### Tests And Certifications

